

Lat. 152, Main 04, SS#23
SANITARY SEWER IMPROVEMENTS
 to serve
WOODLAND NORTH
 CITY OF WICHITA, KANSAS

Jim Armour, P.E., City Engineer

Project Number
 468-84479

O.C.A. Number
 744282

GENERAL NOTES:

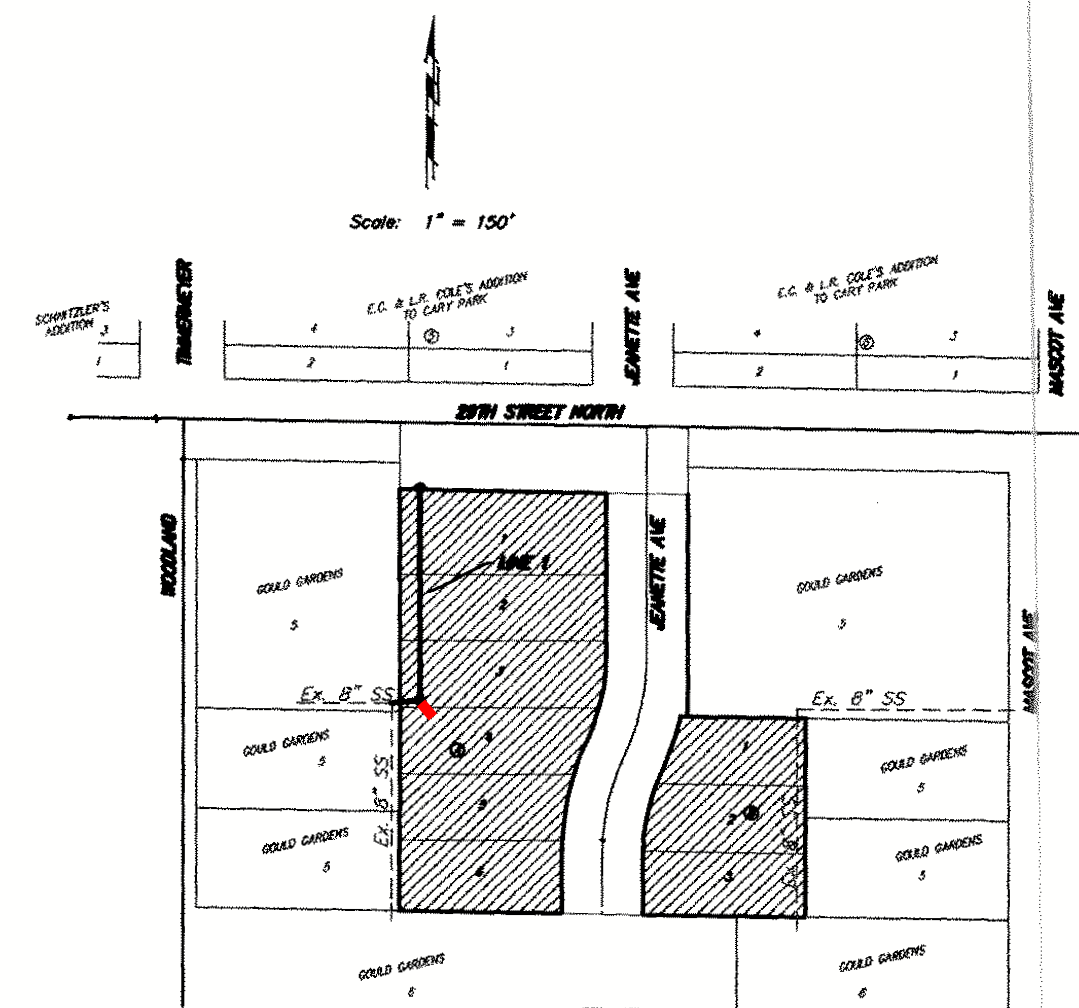
1. Contractor will be required to provide notice to utility companies a minimum of forty-eight (48) hours prior to any excavation, as follows:

Kansas One-Call 687-2470

Contractor must notify the following in case of an emergency:

Cox Communications 262-4270
 Kansas Gas Service 1-888-482-4950
 Westar Energy 383-8650
 Aquila Energy 1-800-303-0357
 AT&T 1-800-431-1411
 City of Wichita Water Dept. 268-4563
 City of Wichita Sewer Maint. 268-4024
 City of Wichita Storm Sewer Maint. 268-4090
 City of Wichita Traffic Maint. 268-4034
 Conoco Phillips Pipeline 1-877-267-2290
 Southern Star Pipeline 529-6600
 Kinder Morgan Pipeline 1-888-844-5658

- Underground utility service lines and overhead utility pole lines are to be adjusted as necessary by others prior to construction unless the plans specifically call for their adjustment by the Contractor or unless the plans specifically identify a utility to be adjusted by its owner during construction. Existing utilities and their location, as shown on the plans, represent the best information obtainable for design. The Contractor will be required to work around existing utilities within the right-of-way which do not conflict with proposed construction.
- Trees and shrubs in public right-of-way which are in direct conflict with proposed new construction shall be removed by the Contractor with the Engineer's approval. Trees and shrubs which are not in direct conflict with proposed new construction shall be saved and protected from damage.
- The Contractor shall be responsible for preserving property irons. The Contractor will be required to re-establish any property irons which are damaged or destroyed by his construction operations. Such irons shall be re-established by a licensed land surveyor in accordance with state laws.
- When connecting to existing manhole or stub, the contractor shall reshape manhole bottom or adjust the existing stub's alignment or elevation as necessary. Cost shall be subsidiary to project.
- The Contractor shall be responsible for maintaining continuous flow of sewage through construction. Contractor's proposed method for maintaining sewage flow shall be approved by the Engineer. Cost of maintaining flow of sewage through construction will not be paid for directly and this cost shall be considered as subsidiary to the other pay items of work.
- The Contractor shall not start work on the project until the Project Inspector is assigned to the project and is present on the sight. Any work done without inspection will be required to be uncovered for inspection.
- All areas disturbed during construction shall be seeded at 300 lbs./acre with Rye Grass immediately following construction in that area. Contractor shall prepare ground per City Specifications.



BENEFIT DISTRICT



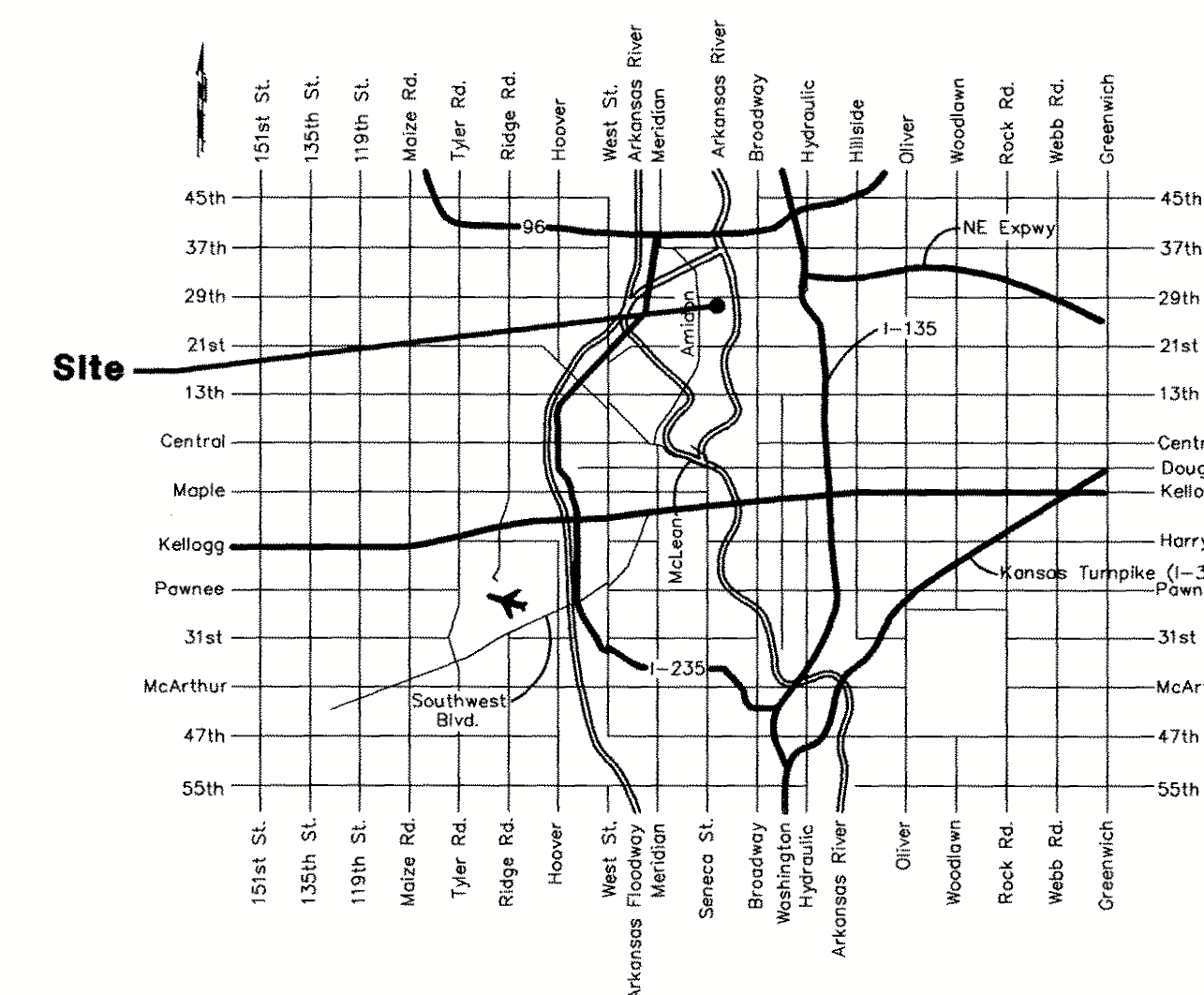
Mies - Contractor
 Greg Shearer - City of Wichita, Inspector
 Released Date: 07/16/08
 Per Plan
 Stub
 pdf by APR 09/24/08

SHEET INDEX

Title Sheet	1
Line 1	2
Standard Manhole Detail	3
Ring and Cover Detail	4
Erosion Control BMPs	5-8
Plat	9

BENCHMARK

CITY OF WICHITA BENCHMARK AT THE
 NE CORNER OF ARKANSAS AND 29TH
 ST NORTH
 ELEV. = 1316.81 NGVD29



VICINITY MAP



Baughman Company, P.A. 315 Ella St. Wichita, KS 67211 P 316-262-7271 F 316-262-0149
 ENGINEERING | SURVEYING | PLANNING | LANDSCAPE ARCHITECTURE