

# GENERAL NOTES:

1. Contractor will be required to provide notice to utility companies a minimum of twenty-four (24) hours prior to any excavation, as follows:

Kansas One-Call 687-2470

The Contractor must notify the following in case of an emergency:

Cox Communications 262-4270  
 Kansas Gas Service 1-888-482-4950  
 Westar Energy 383-8650  
 Aquila Energy 1-800-303-0357  
 SBC 268-2245  
 City of Wichita Water Dept. 268-4563  
 City of Wichita Sewer Maint. 268-4024  
 City of Wichita Storm Sewer Maint. 268-4090  
 City of Wichita Traffic Maint. 268-4034  
 Conoco Pipeline Co. 1-800-231-2551  
 Southern Star Pipeline Co. 529-6600  
 Phillips Pipeline Co. 1-800-766-8230  
 Jayhawk Pipeline Co. 1-888-542-9575

2. Utility service lines, poles, valve boxes, meters, and etcetera are to be adjusted as necessary by others prior to construction unless the plans specifically call for their adjustment by the Contractor or unless the plans specifically identify a utility to be adjusted by its owner during construction. Existing utilities and their location, as shown on the plans, represent the best information obtainable for design. The Contractor will be required to work around existing utilities within the right-of-way which do not conflict with proposed construction.

3. Rubble from the removal of miscellaneous structures and excess excavation which is to be wasted shall be disposed of on sites to be provided by the Contractor. These sites shall be approved by the Engineer as to suitability, appearance and site location. Locations, in the opinion of the Engineer, that will leave an unsightly appearance will not be approved. All disposal sites must be approved by the Kansas Department of Health and Environment. Material either stockpiled or disposed of in a flood plain would require a Kansas State Board of Agriculture permit. Any material dumped in waters of the United States or wetlands is subject to U.S. Corps. of Engineers permitting regulations. Any material buried or stockpiled beyond approved construction limits would require additional archaeological investigations unless buried in a previously approved borrow location.

4. Trees and shrubs in public right-of-way which are in direct conflict with proposed new construction shall be removed by the Contractor with the Engineer's approval. Trees and shrubs which are not in direct conflict with proposed new construction shall be saved and protected from damage.

5. The Contractor shall give all property owners and/or tenants of developed property abutting the construction of this project a minimum of ten (10) days advance notice prior to start of construction.

6. The Contractor shall be responsible for preserving property irons. The Contractor will be required to re-establish any property irons which are damaged or destroyed by his construction operations. Such irons shall be re-established by a licensed land surveyor in accordance with state laws.

7. All existing and proposed erosion control measures including silt fencing, erosion control mat, straw bales, inlet barriers, and const. entrance shall be maintained throughout construction by the contractor and until project is accepted by the City of Wichita. The on-site engineer shall complete weekly reports on the status of erosion control measures. The contractor shall be required to comply with maintenance and/or replacement of erosion control measures as determined by the on-site engineer until project is accepted by City of Wichita. Maintenance and/or replacement of erosion control measures to be paid by individual bid item listed on bid sheet.

8. All excess excavation shall remain on-site and shall be stockpiled or spread at a location determined by the engineer.

9. The Contractor shall be responsible for maintaining continuous flow of sewage through construction. Contractor's proposed method for maintaining sewage flow shall be approved by the Engineer. Cost of maintaining flow of sewage through construction will not be paid for directly and this cost shall be considered as subsidiary to the other pay items of work.

10. The developer for this project is Webb Road Partners, LLC, and may be contacted via Matt Quinn @ (316) 630-9300.

11. All areas disturbed within yards during construction shall be seeded, mulched, and fertilized as follows (Permanent Seeding): Contractor to verify prior to seeding operations:

Seed: APPROVED SEED BY HOMEOWNERS  
 OR Kansas Premium Fescue Blend: 8 lbs./1000 sq. ft.  
 Mulch: Prairie Hay: 2 tons/acre  
 Fertilizer: 12-24-12: 850 lbs./acre

All other areas disturbed during construction shall be seeded at 300 lbs./acre with Rye Grass immediately following construction in that area. Contractor shall prepare ground per City Specifications. All seeding operations shall conform to City of Wichita Standard Specifications. All costs associated with seeding, mulching, and fertilizing shall be included in bid item "Project Seeding."

# Lateral 43, Main 1, Cowskin Interceptor Sewer SANITARY SEWER IMPROVEMENTS to serve

## WHEATRIDGE ADDITION

CITY OF WICHITA, KANSAS

James L. Armour, P.E. City Engineer

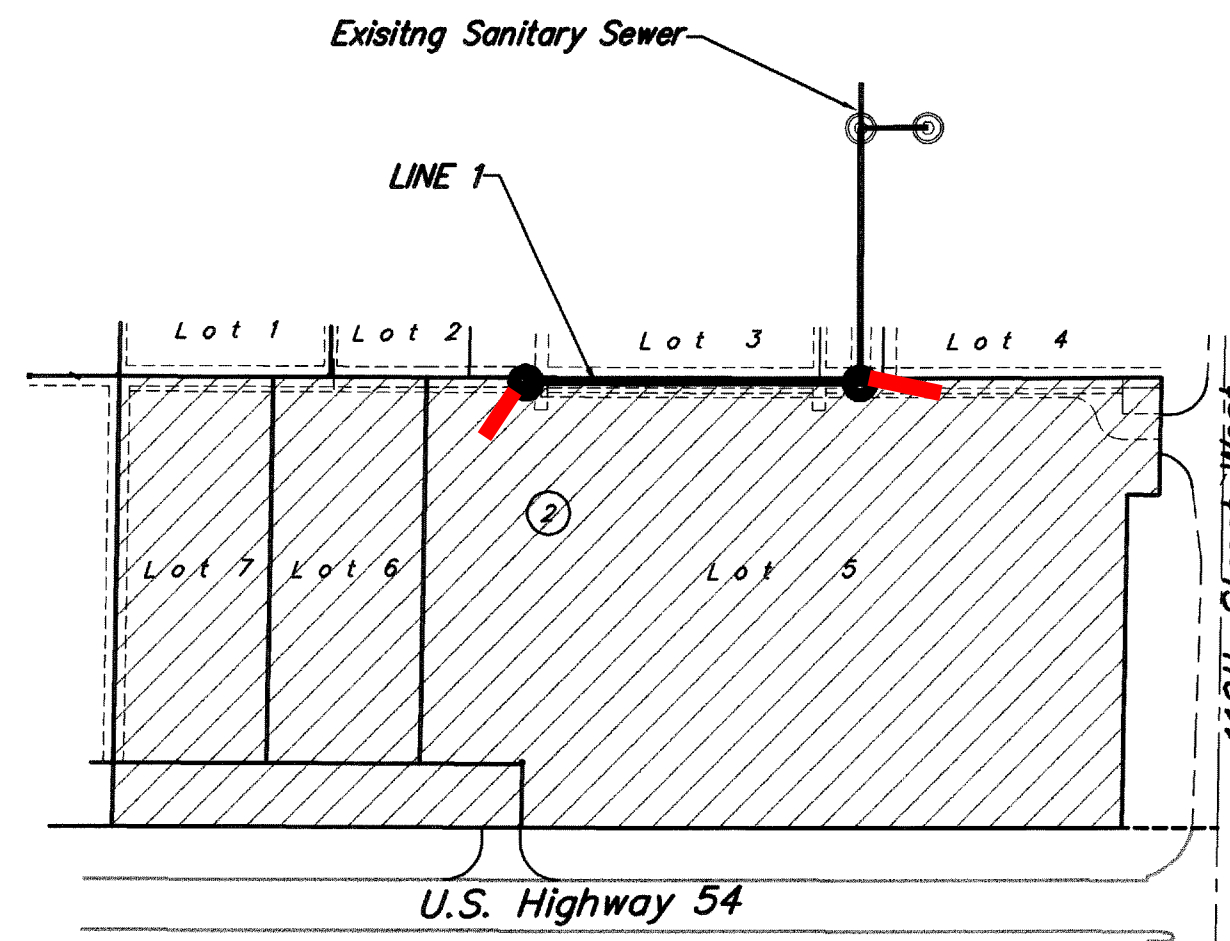
Project Number

468-84491

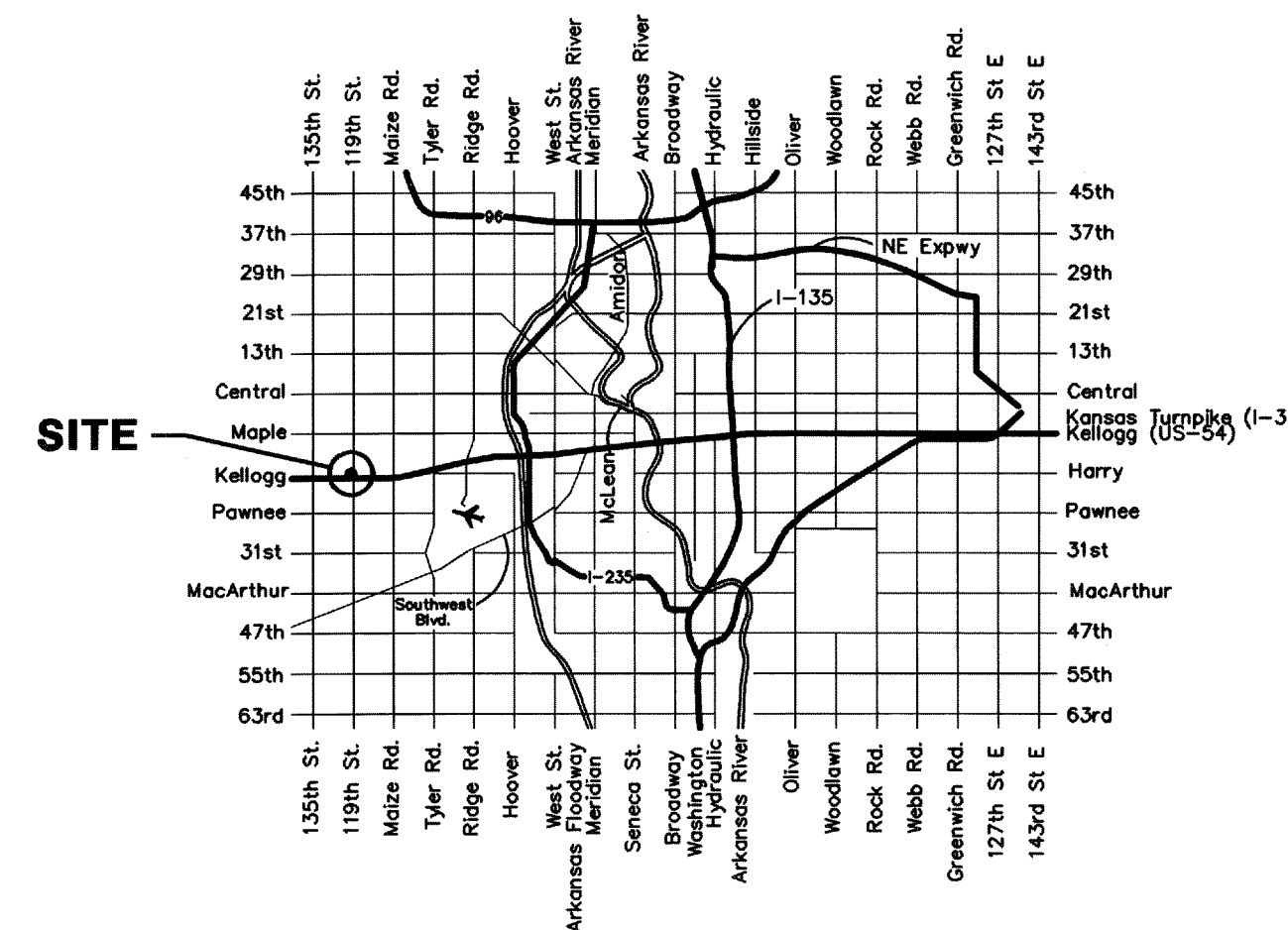
O.C.A. Number

744272

Mies Construction, Inc. - Contractor  
 Rodney Starcher - City of Wichita, Inspector  
 Released: 04/30/08  
 As-Built  
 Stubs  
 .pdf by JDL 5/2/08



Benefit District



Vicinity Map

### Benchmarks

City Disc:  
 City of Wichita Disc, 13 feet  
 south and 85 feet east of  
 Kellogg and 119th Street West.

Elev. = 1333.36

### Sheet Index

Title Sheet	1
Line 1	2
Standard Manhole Detail	3
Ring & Cover Detail	4
Erosion Control Plan	5
Erosion Control Details	6-9
Coordinate Sheet	10
Copy of Plat	11



Baughman Company, P.A. 315 Ellis St. Wichita, KS 67211 P 316-262-7271 F 316-262-0149  
 ENGINEERING | SURVEYING | PLANNING | LANDSCAPE ARCHITECTURE