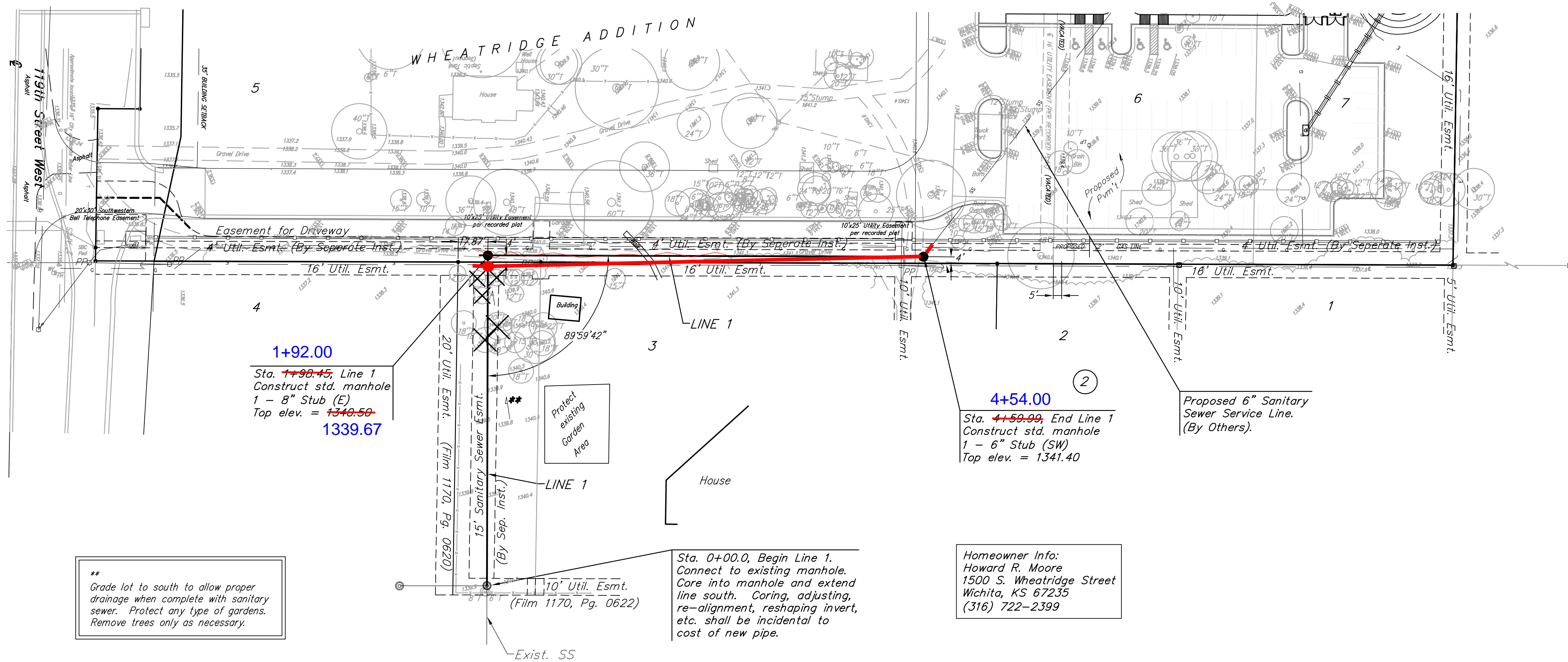


BENCHMARKS:
City of Wichita Disc, 13 feet south
and 85 feet east of Kellogg and
119th Street West

Elevation = 1333.36 (MSL)



Scale: 1" = 40' Horizontal
1" = 5' Vertical
• = Iron

1+92.00
Sta. ~~1+99.45~~ Line 1
Construct std. manhole
1 - 8" Stub (E)
Top elev. = ~~1340.59~~
1339.67

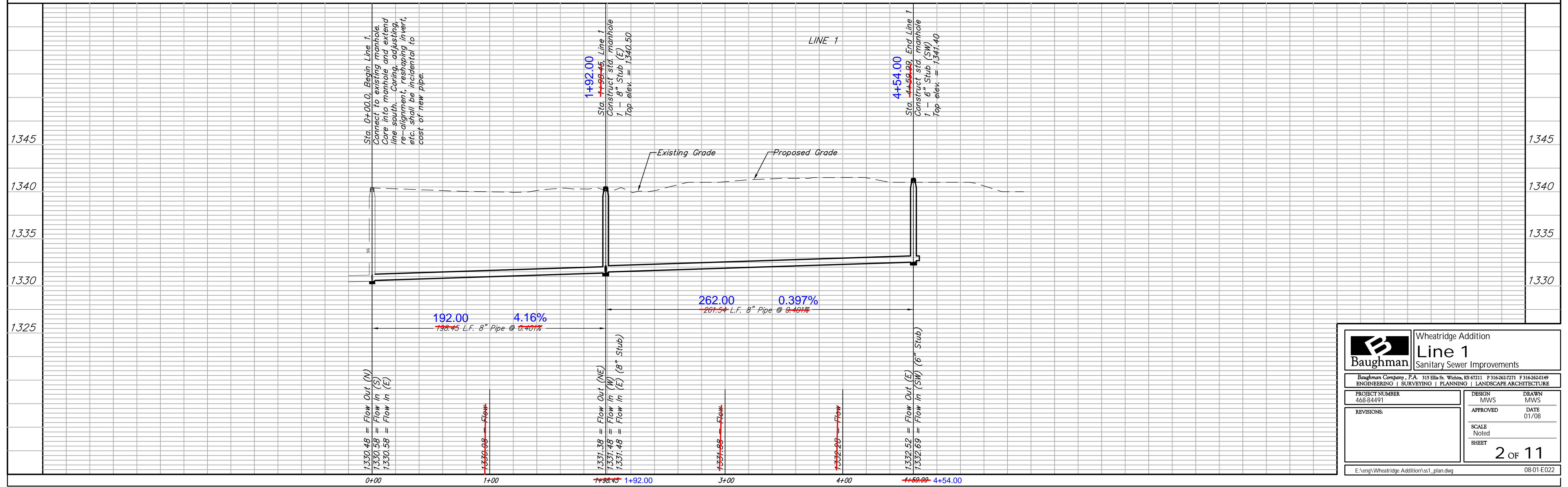
4+54.00
Sta. ~~4+59.99~~ End Line 1
Construct std. manhole
1 - 6" Stub (SW)
Top elev. = 1341.40

**
Grade lot to south to allow proper
drainage when complete with sanitary
sewer. Protect any type of gardens.
Remove trees only as necessary.

Sta. 0+00.0, Begin Line 1.
Connect to existing manhole.
Core into manhole and extend
line south. Coring, adjusting,
re-alignment, reshaping invert,
etc. shall be incidental to
cost of new pipe.

Homeowner Info:
Howard R. Moore
1500 S. Wheatridge Street
Wichita, KS 67235
(316) 722-2399

Contractor to remove trees
as needed for construction
of Sanitary Sewer.



	Wheatridge Addition	
	Line 1	
Sanitary Sewer Improvements		
<small>Baughman Company, P.A. 315 Ellis St. Wichita, KS 67211 P 316-262-7771 F 316-262-0149 ENGINEERING SURVEYING PLANNING LANDSCAPE ARCHITECTURE</small>		
PROJECT NUMBER 468-84491	DESIGN MWS	DRAWN MWS
REVISIONS:	APPROVED	DATE 01/08
	SCALE Noted	
	SHEET	2 OF 11
E:\eng\Wheatridge Addition\ss1_plan.dwg		08-01-E022