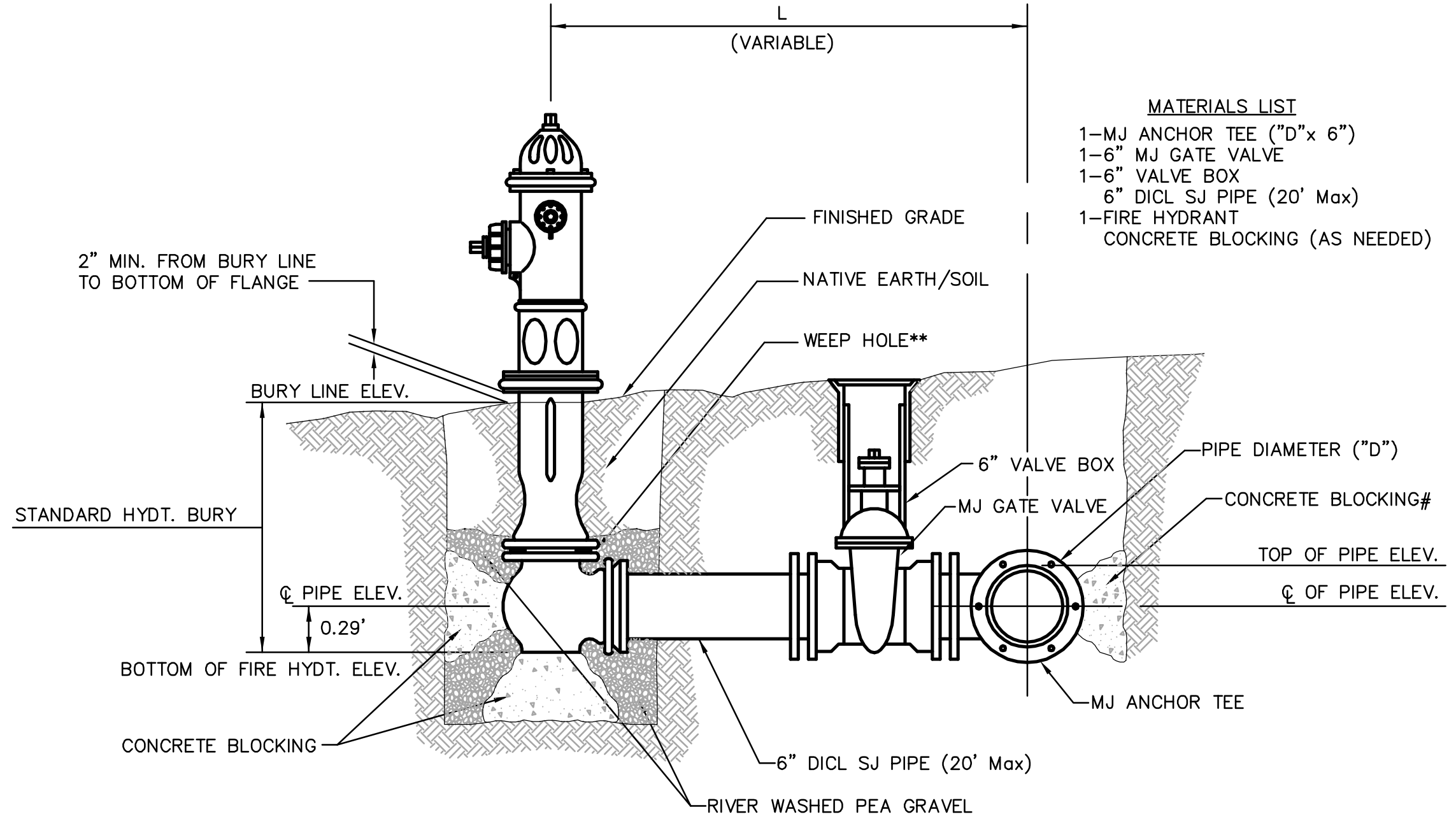


LINE VALVE ASSEMBLY

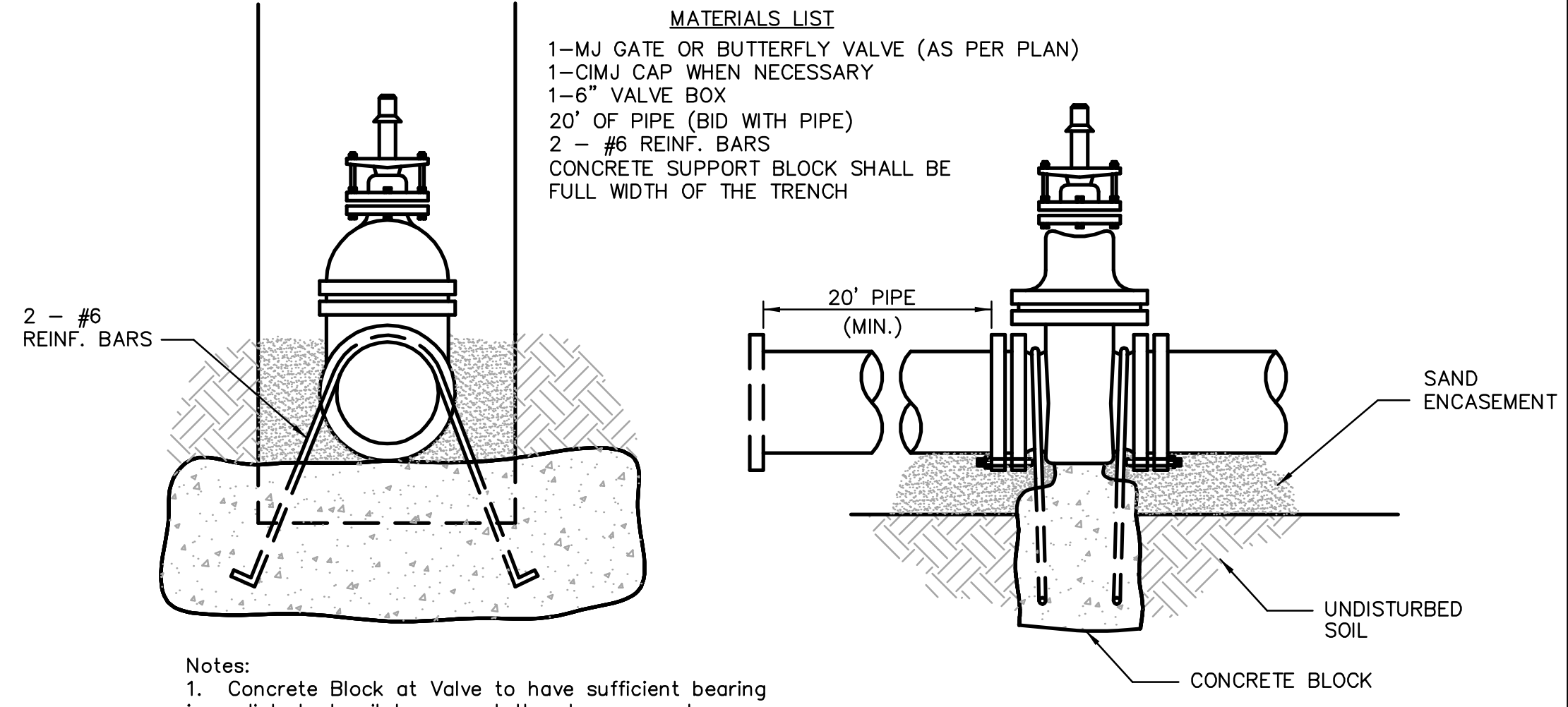


FIRE HYDRANT ASSEMBLY

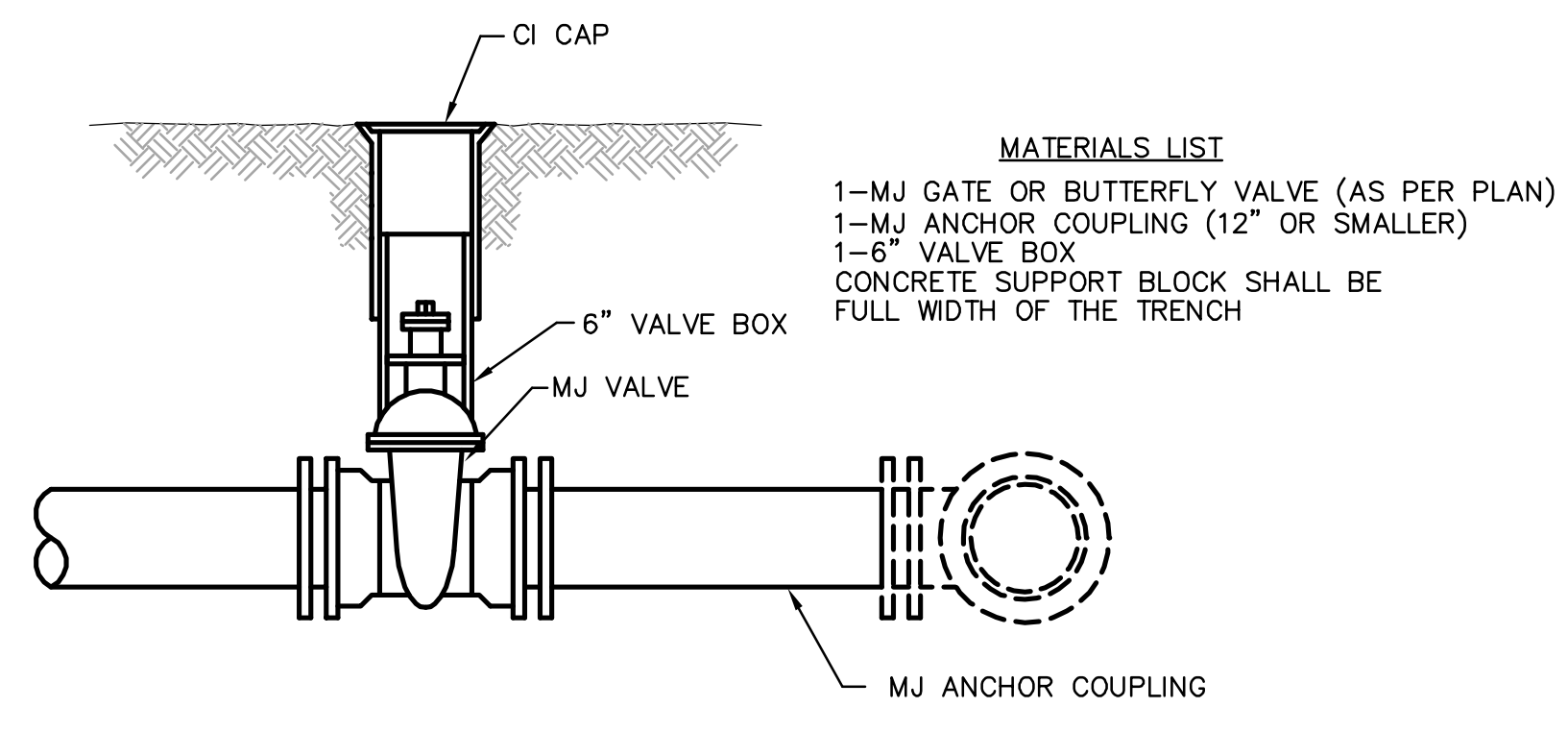
FIRE HYDRANTS REQUIRED

LINE	STATION	BURY LINE ELEVATION	TOP OF PIPE ELEVATION	FIRE HYDRANT BURY REQUIRED*
1	1+04.76	1332.20	1326.63	6.5'
1	13+97.55	1326.70	1323.00	4.5'

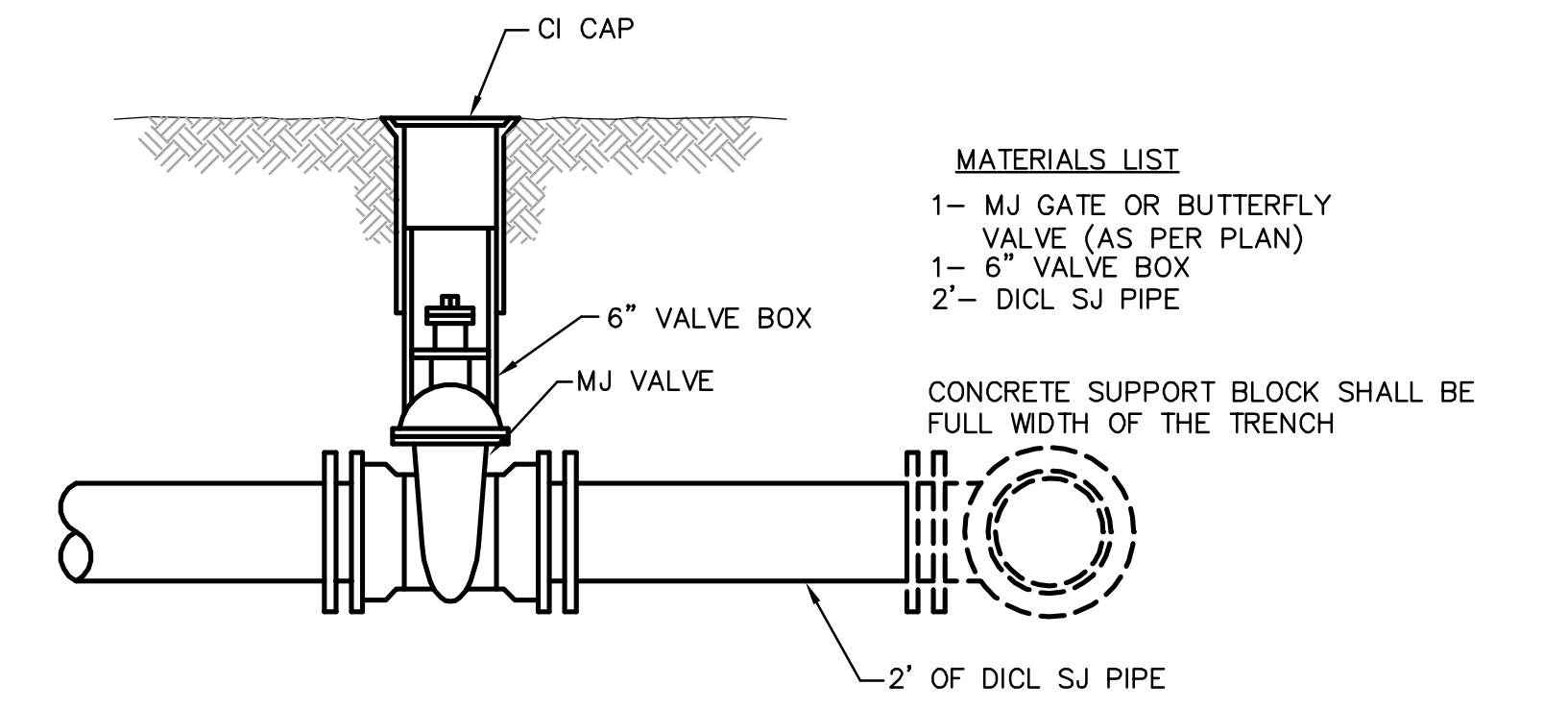
** CAUTION! WEEP HOLES TO BE KEPT CLEAR DURING CONSTRUCTION AND BACKFILL. CONCRETE FOR THRUST BLOCKING SHALL NOT OBSTRUCT WEEP HOLES.
 # CONCRETE THRUST BLOCKING SHALL BE KEPT CLEAR OF BOLTS, NUTS, AND MJ ACCESSORIES.
 * IF HYDRANT BURY IS IN EXCESS OF 5', CONTRACTOR SHALL USE STANDARD 5" HYDRANT BURY AND HYDRANT BARREL EXTENSIONS AS NECESSARY.



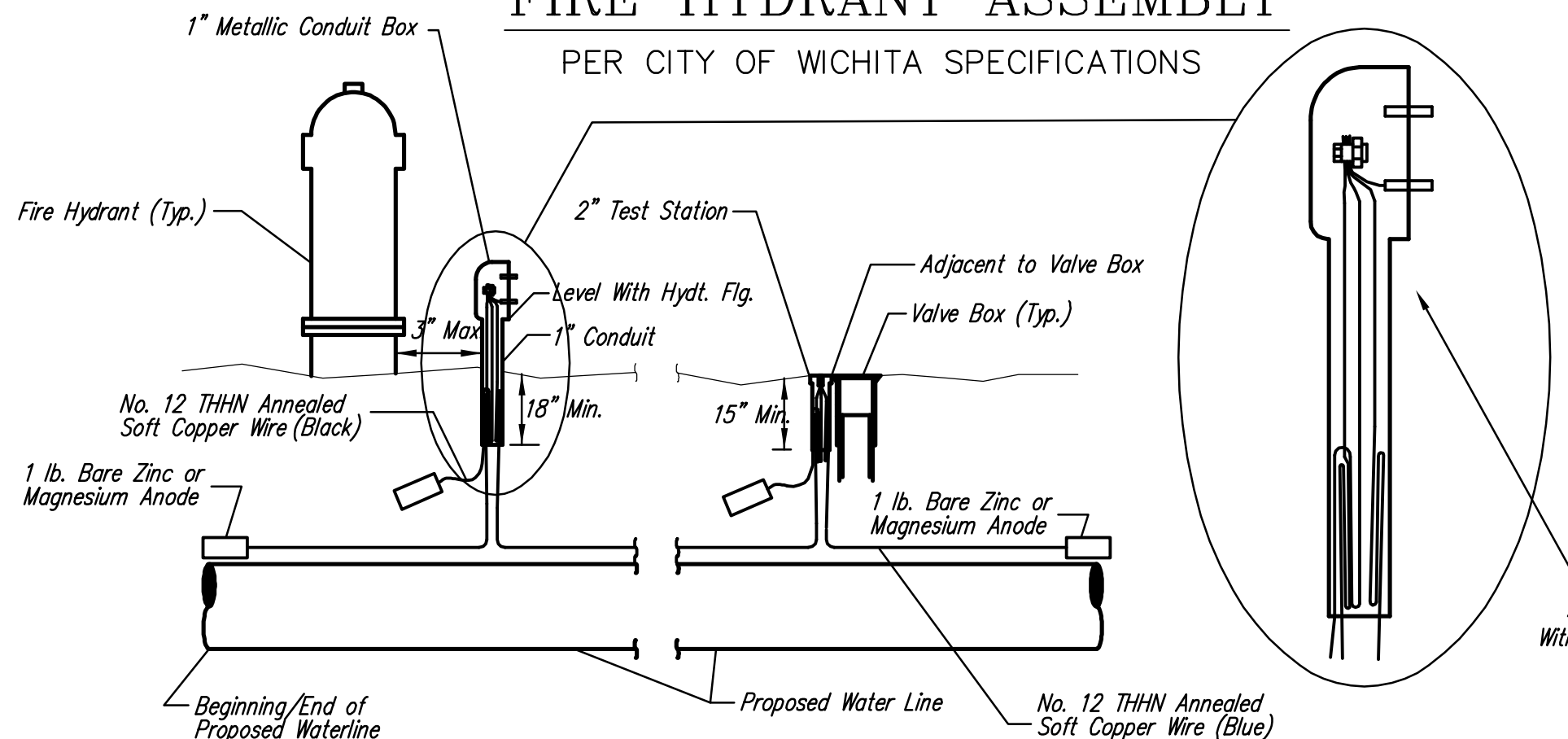
ANCHORED VALVE ASSEMBLY, SPECIAL



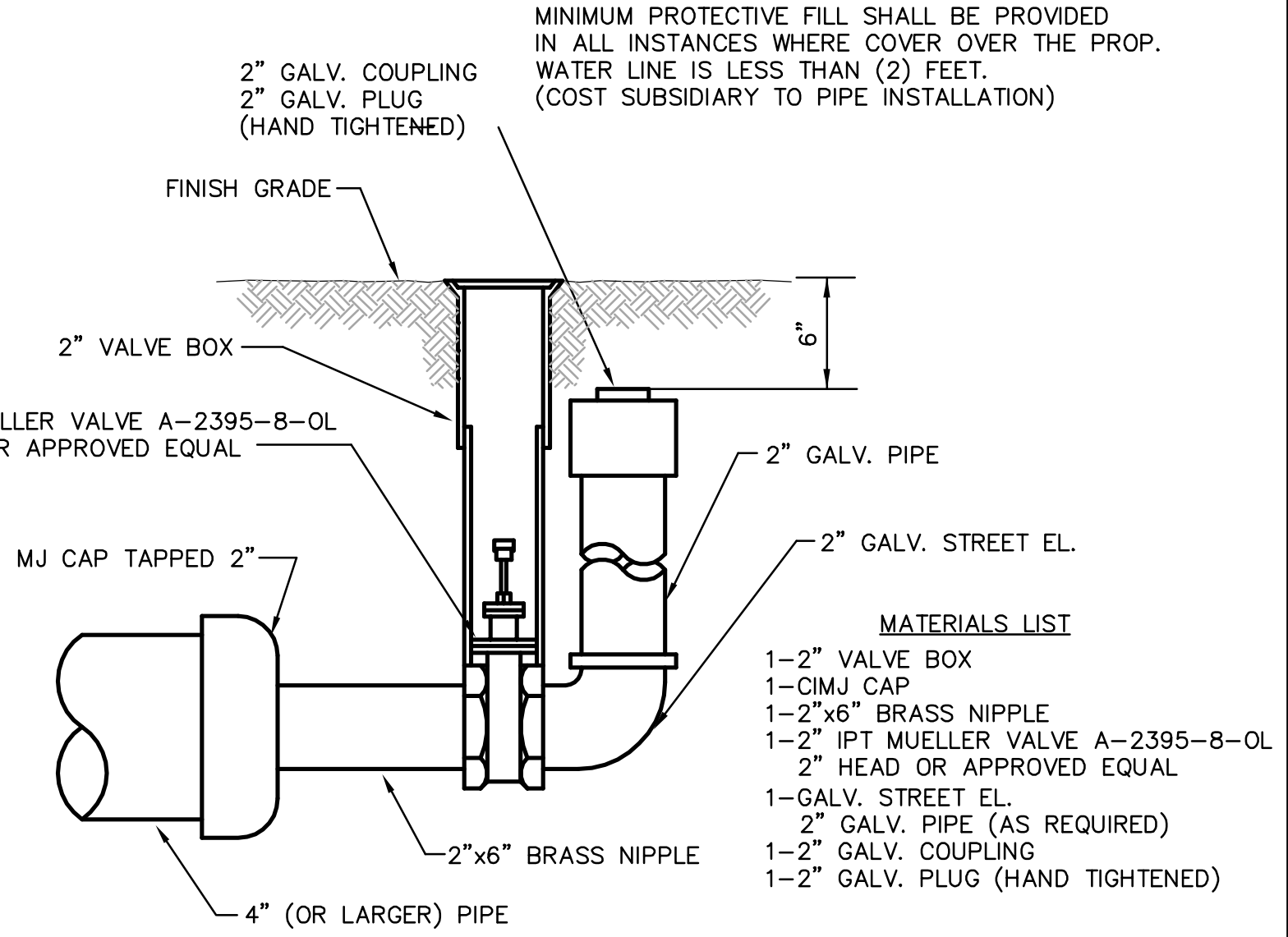
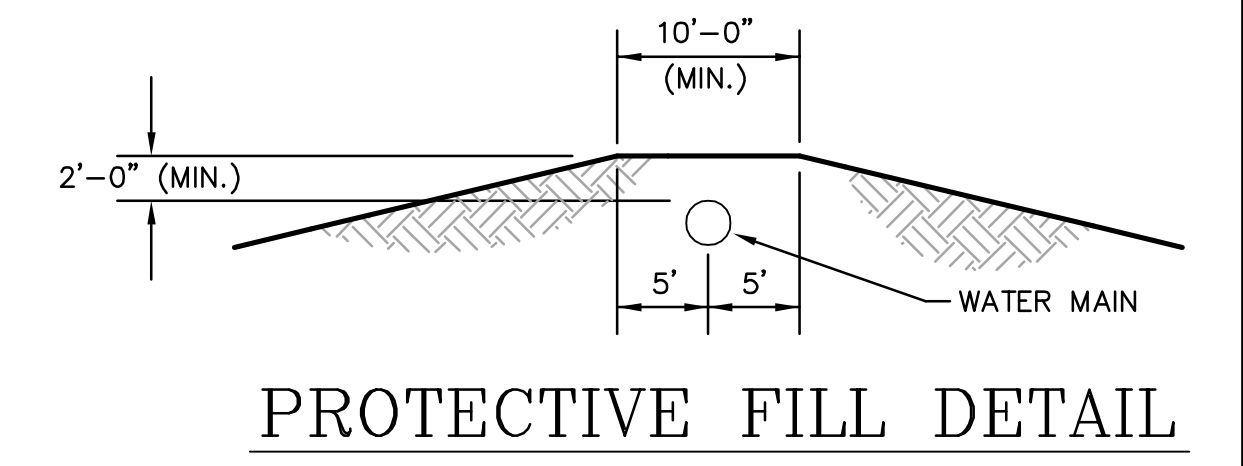
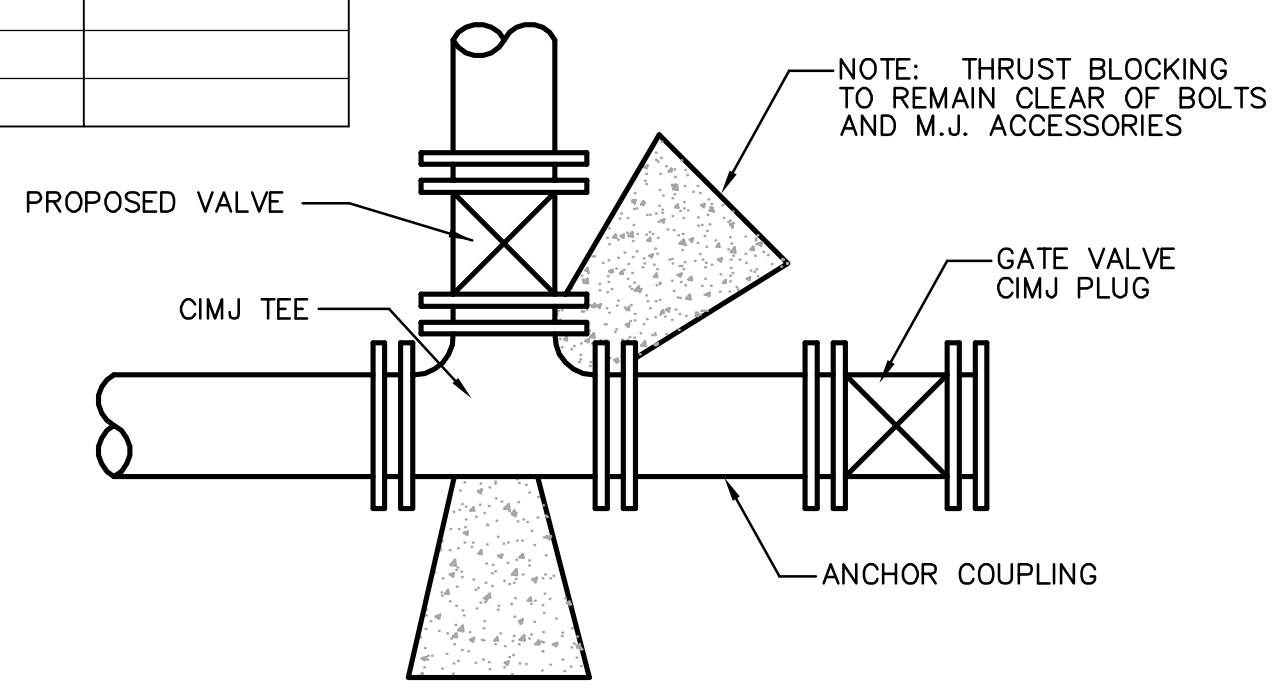
ANCHORED VALVE ASSEMBLY



VALVE ASSEMBLY



TRACER WIRE DETAIL



2" BLOWOFF ASSEMBLY

CONCRETE SUPPORT BLOCKING FOR BUTTERFLY VALVE INSTALLATION

- NOTES**
- This detail covers Butterfly Valve installation, inclusive, regardless of type of pipe or joint used. Larger lines to be detailed on plans.
 - 6" Valve Box and Cover required per City of Wichita Std. Specifications.
 - Conc. Support Block to be full width of trench.

THE CITY OF WICHITA

STANDARD WATER ASSEMBLY DETAILS

JAMES L. ARMOUR, P.E. - CITY ENGINEER

CITY ENGINEER'S OFFICE
 455 NORTH MAIN STREET
 WICHITA, KANSAS 67202
 (316) 268-4501
 (316) 268-4114 FAX

PROJECT NUMBER: 448-90372
 INDEX CODE: 735416

DATE: SEP 2004
 SHEET 2 OF 13

Revised: 6-7-00, MCG

COST IS SUBSIDIARY TO PIPE INSTALLATION