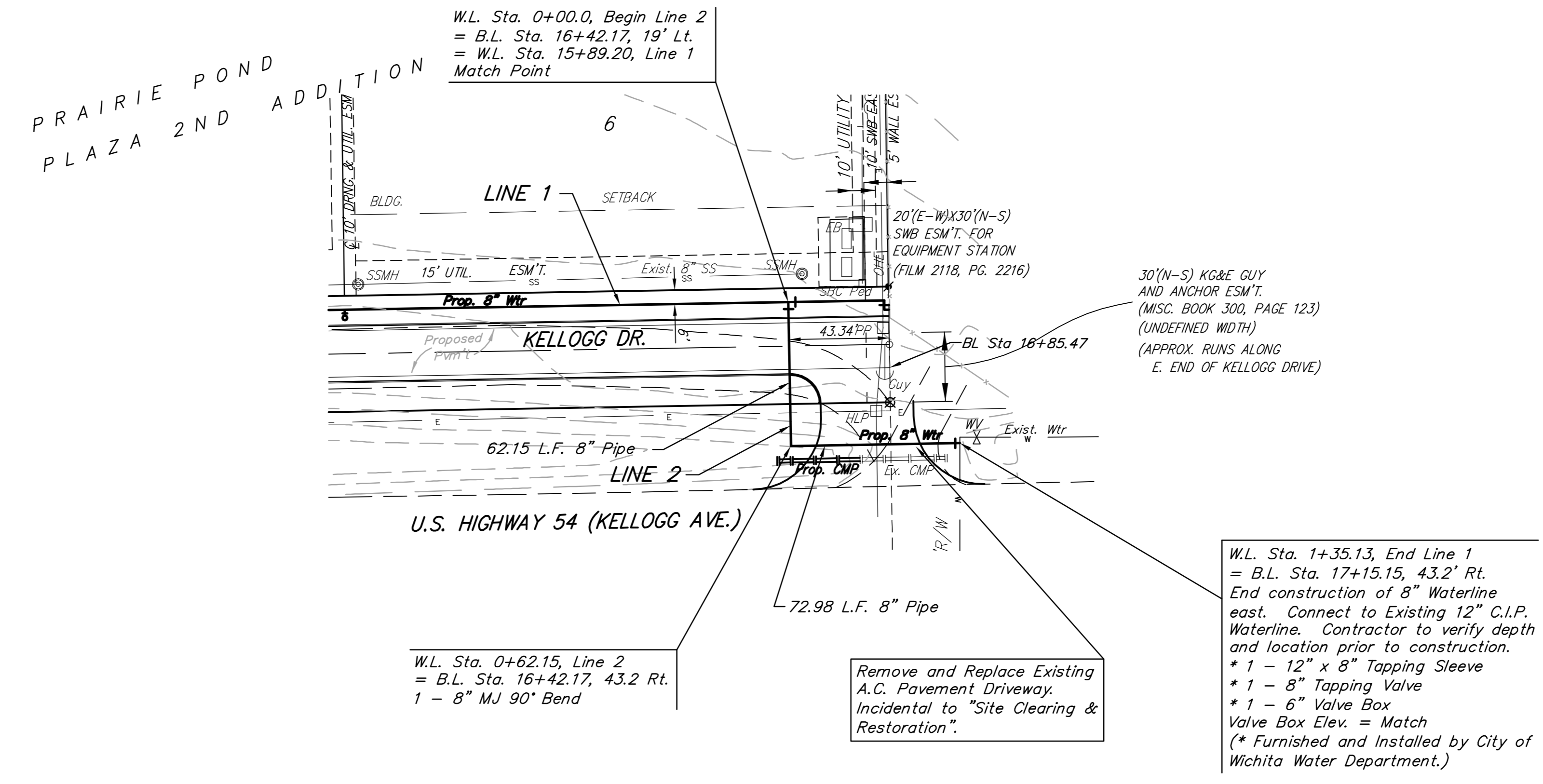
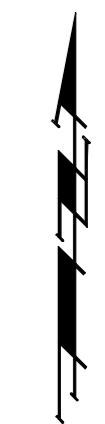
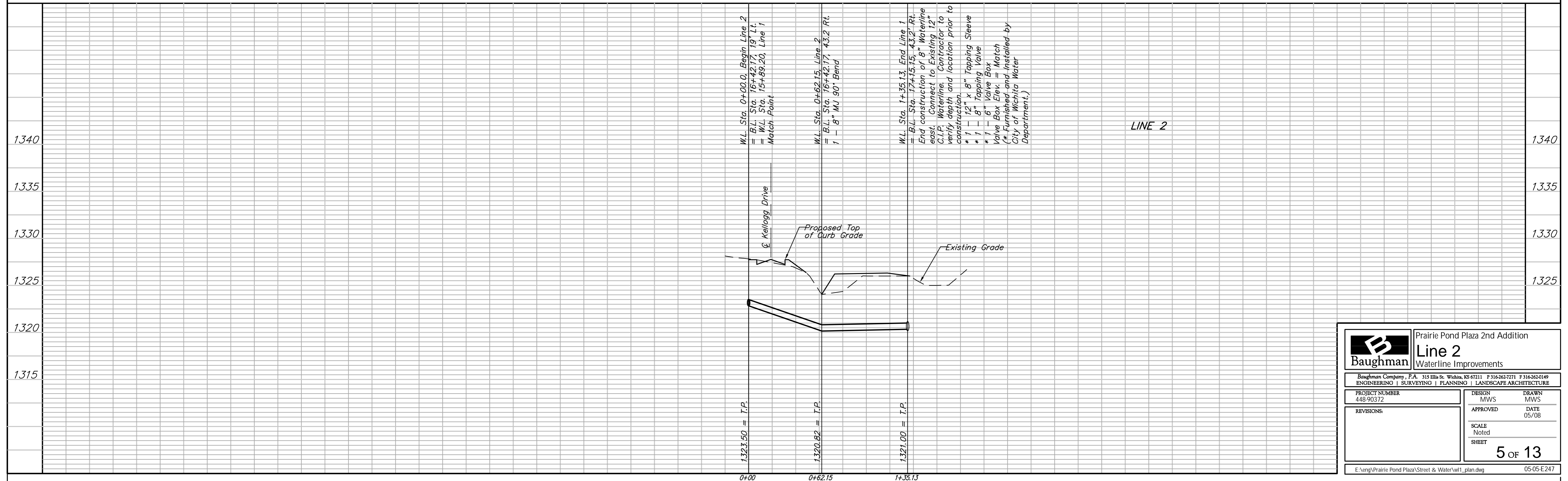


BENCHMARK:
 "□" CUT ON TRAFFIC SIGNAL
 LIGHT POLE BASE, NW CORNER
 OF KELLOGG & 143RD STREET
 EAST.
 ELEV. = 1318.61 NGVD
 ELEV. = 131.21 CITY DATUM

Scale: 1" = 40' Horizontal
 1" = 5' Vertical
 • = Iron



All excess excavation may be removed by the Contractor or shall remain on-site and shall be stockpiled or spread at a location determined by the engineer.



		Prairie Pond Plaza 2nd Addition Line 2 Waterline Improvements	
<small>Baughman Company, P.A. 315 Ellis St. Wichita, KS 67211 F 316-262-7271 F 316-262-0149 ENGINEERING SURVEYING PLANNING LANDSCAPE ARCHITECTURE</small>			
PROJECT NUMBER 448-90372	DESIGN MWS	DRAWN MWS	DATE 05/08
REVISIONS:	APPROVED	SCALE Noted	SHEET 5 OF 13
<small>E:\eng\Prairie Pond Plaza\Street & Water\wl1_plan.dwg</small>			<small>05-05-E247</small>