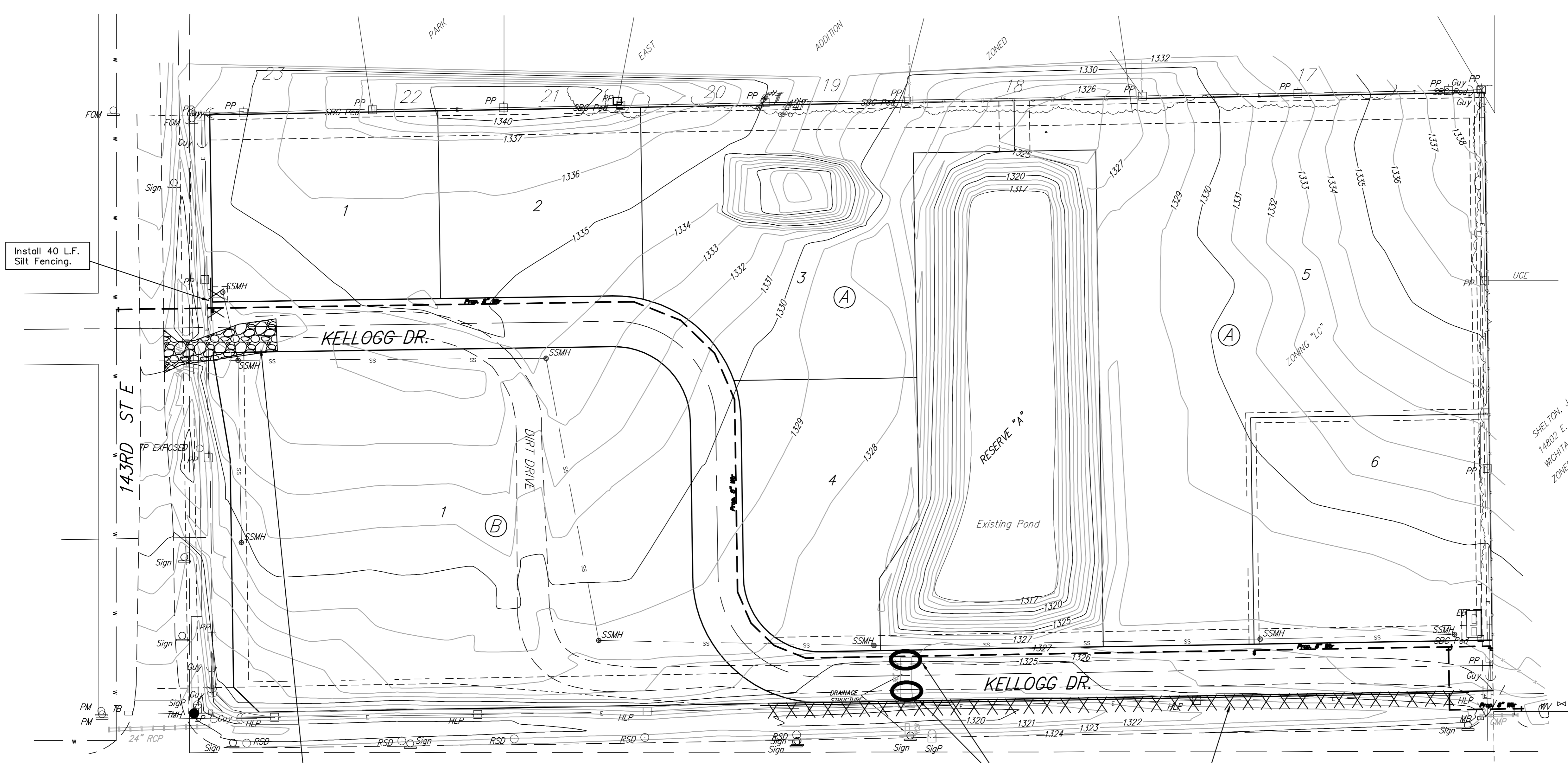


Scale: 1" = 60'



Install 40 L.F. Silt Fencing.

Install Curb Inlet Sediment Barrier

Install 700 L.F. Silt Fencing.

CONSTRUCTION ENTRANCE INFORMATION:
Contractor Shall Construct and Maintain Approved Entrance as Discussed in the Storm Water Pollution Prevention Plan Guidelines. Entrance Shall be a Minimum of 30' Wide by 85' in Length With 4-6" Dia. Stone at a Depth of 8".

EROSION CONTROL PLAN LEGEND
(Installation Details Found in the SWP2 Plan)

- LIGHT STONE RIP-RAP & CONSTRUCTION ENTRANCE
- DROP INLET PROTECTION
- CURB INLET PROTECTION
- SILT FENCING
- EARTH DIKES
- EROSION CONTROL MAT

NO SCALE

SHELTON, JACK L. PATSY L.
14802 E. KELLOGG
WICHITA, KS 67220-9253
ZONED "SF-20"

U.S. HIGHWAY 54 (KELLOGG AVE.)

- NOTES:**
- This Plan is Not To Be Used As A Comprehensive Grading Plan. All Spot Elevations Are Proposed & Subject To Change.
 - Each Lot Area Disturbed By Construction Shall Be the Responsibility of Each Individual Homeowner. Owner Responsible to Follow All SWPP Plans & Guidelines For The Area.
 - Erosion Control Matting and/or Other Approved Bank Stabilization w/Seeding & Fertilizer Shall Be Installed at Engineered Channels or Sedimentation Basins Where the Designed Slopes Will be Greater Than 6:1. All Other Disturbed Areas Shall be Seeded, Fertilized, & Mulched As Follows:
Per Attached KDOT Specifications.

- Install 8" Wide Culex/Excelsior Blanket, or Approved Equal, on Prepared Surface Back of Curb. Edge of Blanket Will Be At Back of Curb. Install Per Manufacturers Recommendation, Including Staples.
- The Silt Fence Installed Around the Ponds May be Substituted with a 40' Wide Strip of Mat-Blend 50/50 Plus Wood Fiber Mulch. The Seeding Rate Shall be the Same As Note 3. Contact Mat, Inc. For More Information on Mat-Blend Plus at 1-888-477-3028. Mat-Blend Plus May be Substituted For Another Comparable Hydro-Mulch Product.
- All Seeding Shall Be Applied Per Attached KDOT Specifications.
- Install Curlex/Excelsior Blanket, or Approved Equal, on Prepared Surface where Soil Has Been Disturbed Due To Construction of Drive Entrances Joining into the Exist. Arterial Street.

EROSION CONTROL MEASURE	UNITS	QUANTITY
SILT FENCE	L.F.	740
RIPRAP	S. Y.	-
DROP INLET BARRIER	EA.	-
CURB INLET BARRIER	EA.	2
STRAW BALE DITCH CHECK	EA.	-
EARTHEN DIKES	L.F.	-
CURLEX	S. Y.	-
EROSION CONTROL MAT	S. Y.	-
Construction Entrance	EA.	1

QUANTITIES ARE FOR INFORMATION ONLY!
CONTRACTOR SHALL VERIFY QUANTITIES PER SPECIFIC ENGINEERING PLAN SHEET.

Baughman Prairie Pond Plaza 2nd Addition
Erosion Control Plan
Waterline Improvements

Baughman Company, P.A. 315 Ellis St. Wichita, KS 67211 P 316262-2271 F 316262-0149
ENGINEERING | SURVEYING | PLANNING | LANDSCAPE ARCHITECTURE

PROJECT NUMBER 448-90372	DESIGN MWS	DRAWN MWS
REVISIONS:	APPROVED MWS	DATE 05/08
SCALE Noted		6 OF 13
SHEET		

E:\eng\Prairie Pond Plaza\Street & Water\EC plan.dwg 05-05-E247