

Joint Length	Min. Radius
20'	286.54'
18'	257.88'
16'	229.23'
14'	200.58'
12'	171.92'
10'	143.27'
8'	114.61'
6'	85.96'
4'	57.30'

Unless otherwise noted elevations shown are to top of pipe.

50' LF Boring and Casing, 18" Steel Casing Pipe w/ min. Thickness of 0.25" (53.0 L.F. 8" Pipe)

CAUTION !!!
Exist. Gas Line

5.84 L.F. 8" DCL Pipe

Sta. 0+04.00 Water Line 1
1-45" MJ Bend (Vert.)
N 8333.38, E 20001.38
Sta. 0+08.84 Water Line 1
1-45" MJ Bend (Vert.)
N 8333.39, E 20005.21

Sta. 0+58.85 Water Line 1
1-11.25" MJ Bend (Vert.)
N 8333.78, E 20056.22

Sta. 0+00.00 Water Line 1
1-5.625" MJ Bend
1-Fire Hydrant Assembly
L=4'
Top Valve Box Elev.=Match Exist.
N 8333.35, E 19997.38
To Be Furnished and Installed
by City of Wichita Water Department

Sta. 0+84.87 Water Line 1
1-8" x 8" MJ Tee
1-8" MJ Gate Valve (S)
L=4'
Top Valve Box Elev.=1416.89
N 8333.97, E 20082.24

Sta. 2+04.71 Water Line 1
1-8" x 8" MJ Tee
1-8" MJ Gate Valve (S)
L=4'
Top Valve Box Elev.=1416.17
N 8315.94, E 20198.58

Sta. 4+74.72 Water Line 1
1-Fire Hydrant Assembly
L=4'
Top Valve Box Elev.=1413.52
Bury Line Elev.=1413.67
N 8279.25, E 20444.30

Sta. 5+26.72 Water Line 1
Connect to Prop. 8" Pipe
2-8" MJ Gate Valve (NE & NW)
1-8" x 8" MJ Tee
Top Valve Box Elev.(NE)=1413.55
Top Valve Box Elev.(NW)=1413.48
N 8240.66, E 20479.17

30.87 L.F. 8" Pipe

119.84 L.F. 8" Pipe

270.01 L.F. 8" Pipe

Nominal Radius= 56.00'

Nominal Radius= 90.00'

Nominal Radius= 172.00'

5' Wall Easement

20' Utility Easement

20' Setback

15' U.E.

Nominal Radius= 102.00'

Existing Gravel Drive

Slope

Reserve B

High Point West Addition

Hayden

Block 1

Block 2

Block 10

Block 7

Block 8

Block 9

Block 11

Remove Trees Only as Needed for Construction. Cost Shall be Subsidiary to Site Clearing.

NOTES:

1. Contractor to Field Verify location and Depth of All Utilities Prior to Construction and Report Findings to Project Engineer.

WL CURVE DATA
Δ = 23'37.46" T=11.71' L=23.10' R=56.00' D=102'18'50" E=1.21'

WL STATION	WL ARC LENGTH	CHORD LENGTH ON 6' OFFSET RT.	DEFLECTION ANGLE	TOTAL DEFLECTION
1+03.97 P.C.				
1+25.00	21.03'	23.15'	10°45'30"	10°45'30"
1+27.07 P.T.	2.07'	2.29'	1°3'23"	11°48'53"

Defl./ft.=30.694167596 Minutes

WL CURVE DATA
Δ = 40'11.1" T=32.92' L=63.12' R=90.00' D=63°39'43" E=5.83'

WL STATION	WL ARC LENGTH	CHORD LENGTH ON 6' OFFSET RT.	DEFLECTION ANGLE	TOTAL DEFLECTION
1+48.62 P.C.				
1+50.00	1.38'	1.47'	0°26'21"	0°26'21"
1+75.00	25.00'	26.58'	7°57'28"	8°23'49"
2+00.00	25.00'	26.58'	7°57'28"	16°21'17"
2+11.74 P.T.	11.74'	12.51'	3°44'13"	20°5'30"

Defl./ft.=19.098593171 Minutes

WL CURVE DATA
Δ = 16°58'30" T=25.67' L=50.96' R=172.00' D=33°18'41" E=1.90'

WL STATION	WL ARC LENGTH	CHORD LENGTH ON 6' OFFSET RT.	DEFLECTION ANGLE	TOTAL DEFLECTION
2+59.25 P.C.				
2+75.00	15.75'	16.29'	2°37'24"	2°37'24"
3+00.00	25.00'	25.85'	4°9'50"	6°47'14"
3+10.21 P.T.	10.21'	10.56'	1°42'1"	8°29'15"

Defl./ft.=9.993449915 Minutes

WL CURVE DATA
Δ = 47°53'49" T=45.30' L=85.27' R=102.00' D=56°10'20" E=9.61'

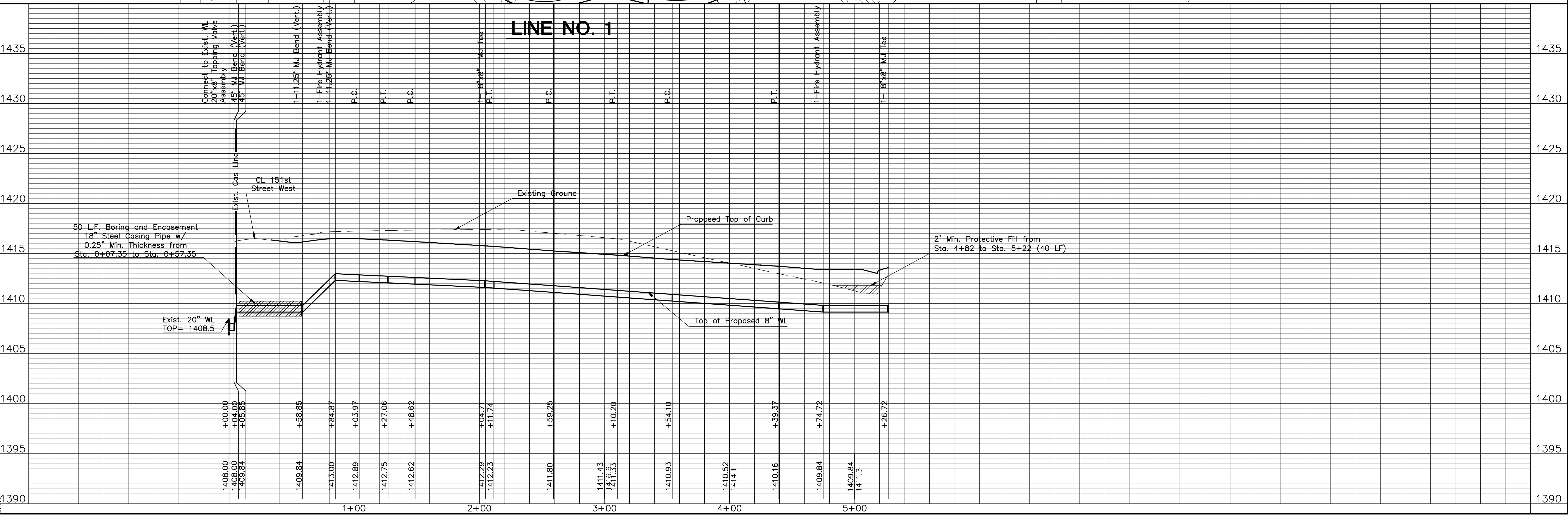
WL STATION	WL ARC LENGTH	CHORD LENGTH ON 6' OFFSET RT.	DEFLECTION ANGLE	TOTAL DEFLECTION
3+54.10 P.C.				
3+75.00	20.90'	22.09'	5°52'12"	5°52'12"
4+00.00	25.00'	26.40'	7°1'18"	12°53'30"
4+25.00	25.00'	26.40'	7°1'18"	19°54'47"
4+39.37 P.T.	14.37'	15.20'	4°2'7"	23°56'55"

Defl./ft.=16.851699857 Minutes

151st Street West

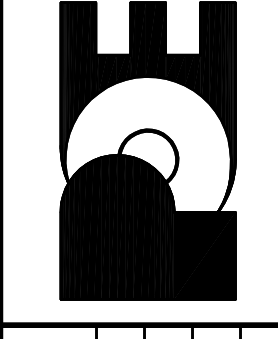
TO W&J M/R 09

Auburn Hills 16th Addition



HIGH POINT WEST ADDITION
WATER DISTRIBUTION SYSTEM IMPROVEMENTS
LINE NO. 1
CITY OF WICHITA, KANSAS
JAMES L. ARMOUR, P.E. - CITY ENGINEER
C.O.W. Proj. No. 448-90377 OCA No. 735422

POE & ASSOCIATES, INC.
CONSULTING ENGINEERS
5940 E. Central, Suite 200 ■ Wichita, KS 67208-4242
Phone 316/685-4114 ■ FAX 316/685-4444



FINAL
Designed By: J. Dickman
Drawn By: M. Tucker
Poe Job No.: 1916A
Date: October, 2008
Sheet 4 of 16