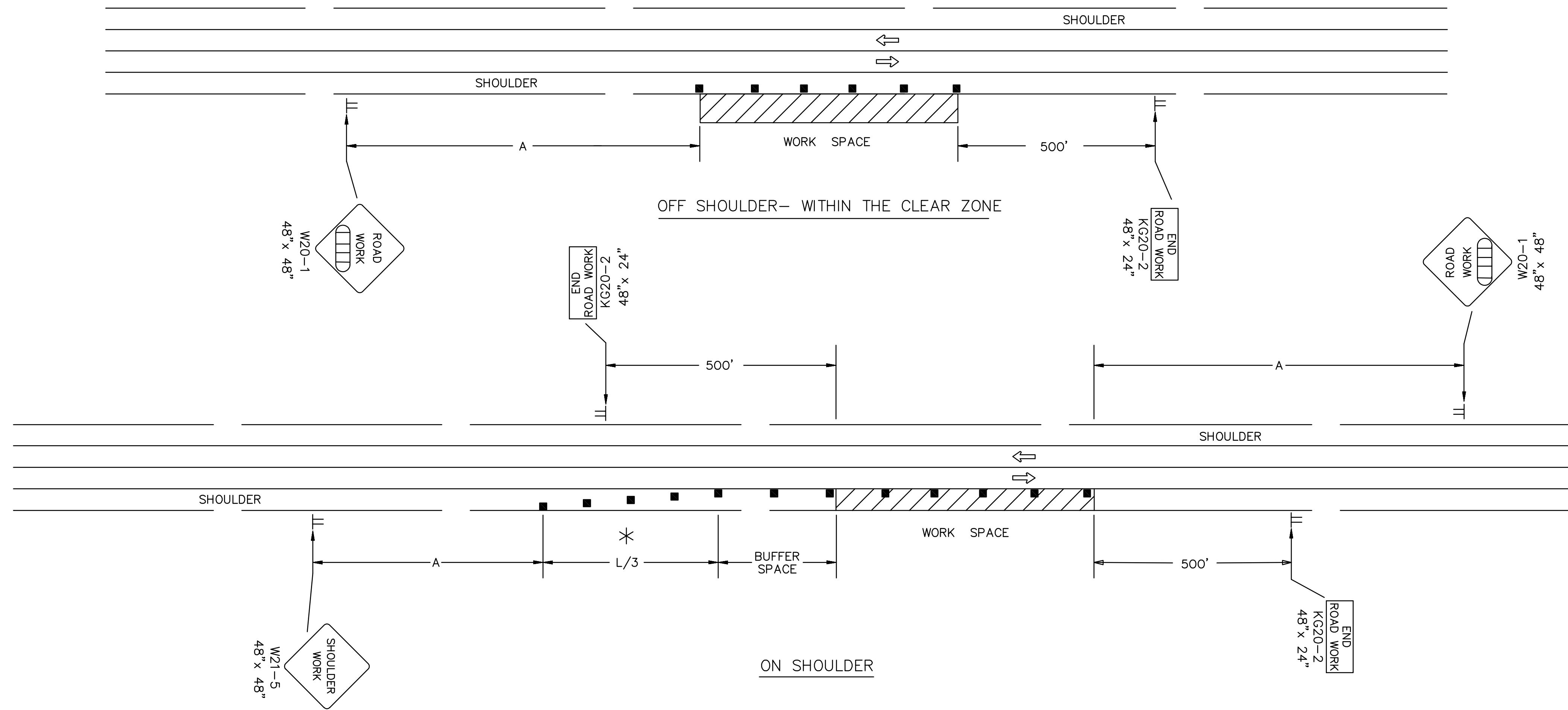


REFER TO STD. TE710 FOR ADDITIONAL INFORMATION ON TEMPORARY TRAFFIC CONTROL SIGNS AND SIGN SPACING.  
 REFER TO STD. TE702 FOR INFORMATION ON TAPERS AND CHANNELIZING DEVICES.  
 REFER TO STD. TE700 FOR LENGTH OF BUFFER SPACE.

NOTE:

NO TRAFFIC CONTROL IS REQUIRED IF THE WORK SPACE IS LOCATED OUTSIDE OF THE CLEAR ZONE.

FOR OPERATIONS OF 60 MINUTES OR LESS, ALL SIGNS AND CHANNELIZING DEVICES MAY BE ELIMINATED IF A VEHICLE WITH HIGH-INTENSITY ROTATING, FLASHING, OSCILLATING, OR STROBE LIGHTS IS USED.



WHEN CONCRETE BARRIER SYSTEM IS USED, PORTABLE CHANNELIZING DEVICES ARE NOT NEEDED ALONG THE TANGENT BARRIER SECTION. DELINEATION ON THE BARRIER SYSTEM IS STILL REQUIRED. SEE RD622.

\* OMIT TAPER IF PAVED SHOULDER IS LESS THAN 8' WIDE.

■ Channelizing Device  
 □□□□ AHEAD, 1500 FT, OR 1 MILE

NO.	DATE	REVISIONS	BY	APP'D
3	8-8-07	G20-2 CHANGED TO KG20-2	M.B.	A.A.A.
2	12-29-05	UPDATED END ROAD WORK SIGN DESIGNATION	M.B.	A.A.A.
1	11-19-03	CHANGED BORDER	B.H.	S.A.B.

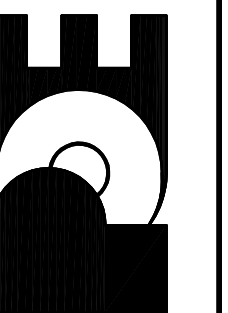
KANSAS DEPARTMENT OF TRANSPORTATION  
 TYPICAL TRAFFIC CONTROL  
 WORK ON OR NEAR THE SHOULDER  
 UNDIVIDED HIGHWAY (2 OR 4 LANE)

DESIGNED	L.E.R.	DATE	8-8-07	APP'D	Anthony A. Alrobaire
DESIGN CK.	DETAIL CK.	QUAN. CK.	TRACE CK.		

No.	Date	By	Approved	Revision

HIGH POINT WEST ADDITION  
 WATER DISTRIBUTION SYSTEM IMPROVEMENTS  
 TRAFFIC CONTROL DETAILS  
 CITY OF WICHITA, KANSAS  
 JAMES L. ARMOUR, P.E. - CITY ENGINEER  
 C.O.W. Proj. No. 448-90377 OCA No. 735422

POE & ASSOCIATES, INC.  
 CONSULTING ENGINEERS  
 5940 E. Central, Suite 200 ■ Wichita, KS 67208-4242  
 Phone 316/685-4114 ■ FAX 316/685-4444



FINAL

Designed By: J. Dickman  
 Drawn By: M. Tucker  
 P.O. Job No.: 1916A  
 Date: October 2008