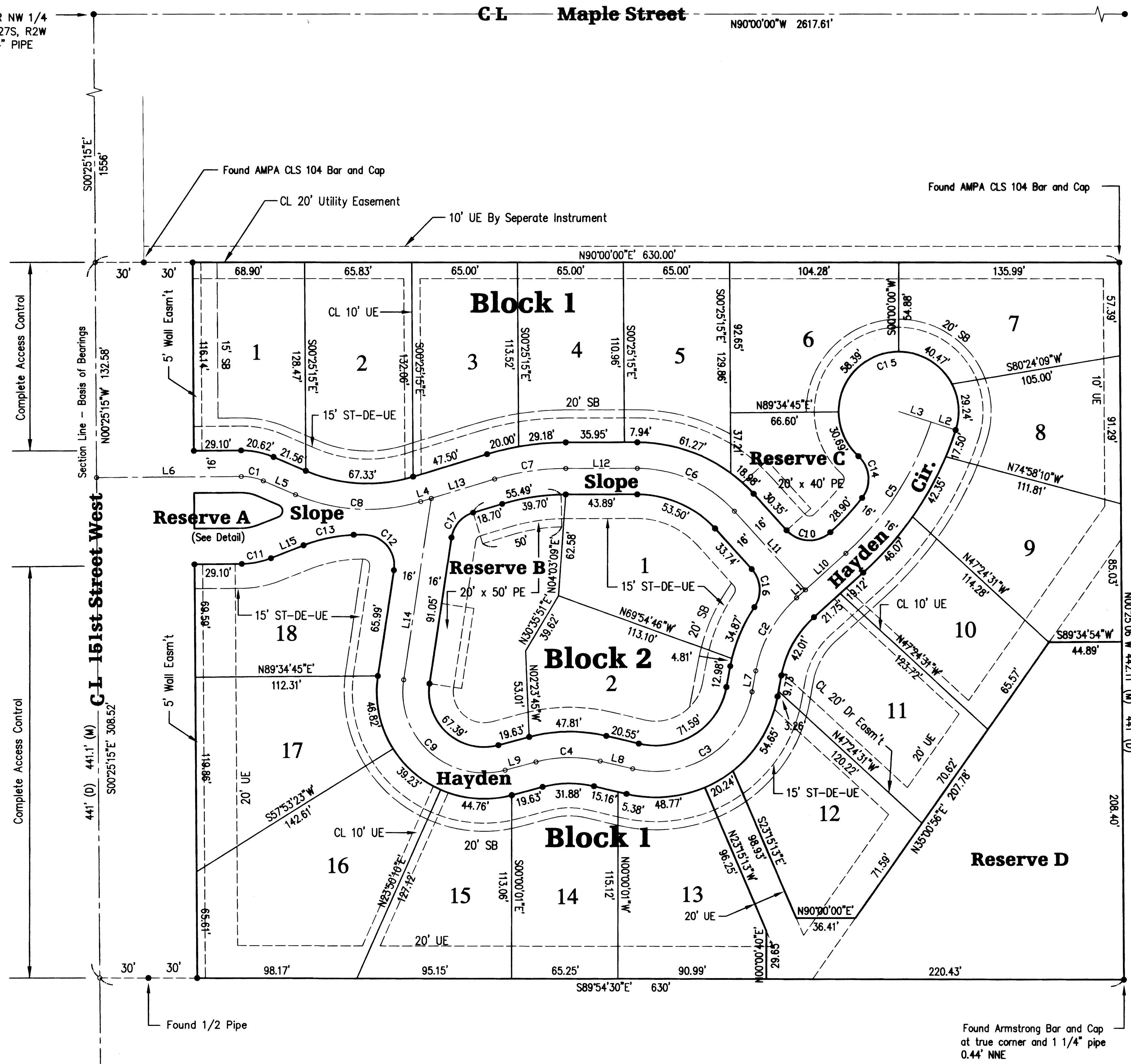


NW CORNER NW 1/4
SEC. 26, T27S, R2W
FOUND 3/4" PIPE

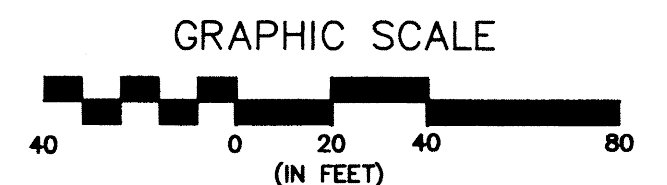
NE CORNER NW 1/4
SEC. 26, T27S, R2W
FOUND 3/4" PIPE

High Point West Addition

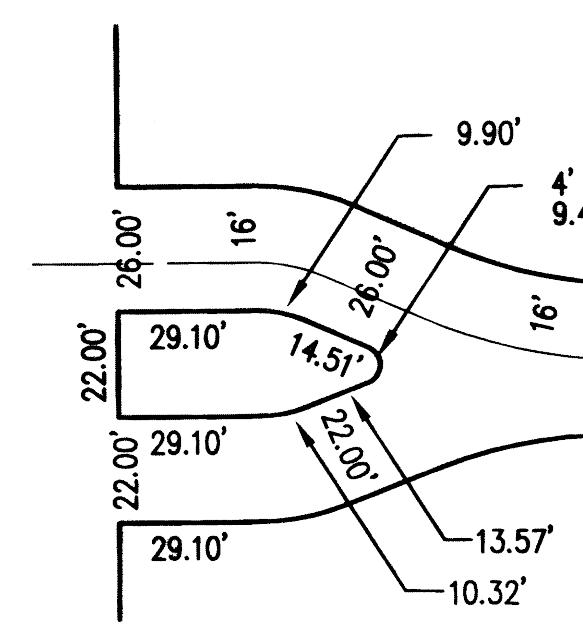
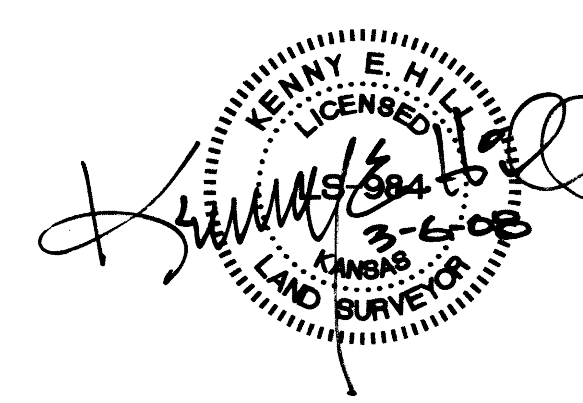
To Wichita, Sedgwick County Kansas



LINE TABLE		
Line	Length	Bearing
L1	7.33	S47°53'49"W
L2	16.00	S72°02'40"E
L3	21.00	S72°02'40"E
L4	6.72	S73°01'30"W
L5	21.56	S66°47'29"E
L6	89.10	S89°34'45"W
L7	12.98	S10°17'24"W
L8	20.55	N76°29'08"W
L9	19.63	S74°58'38"W
L10	33.55	S47°53'49"W
L11	65.36	N42°06'11"W
L12	43.89	N90°00'00"W
L13	40.78	S73°01'30"W
L14	113.13	S08°32'08"W
L15	21.56	N68°27'05"E



CURVE TABLE				
Curve No.	Radius	Length	Chord	Delta
C1	34.00	14.02	13.92	23°37'46"
C2	80.00	52.51	51.57	37°36'25"
C3	60.00	97.62	87.21	93°13'28"
C4	80.00	39.85	39.43	28°32'13"
C5	186.68	97.56	96.45	29°56'29"
C6	80.00	66.88	64.95	47°53'49"
C7	150.00	44.44	44.28	16°58'30"
C8	112.00	78.55	76.95	40°11'01"
C9	50.00	99.10	83.66	113°33'30"
C10	19.00	30.03	27.00	90°32'47"
C11	50.00	18.44	18.33	21°07'40"
C12	19.00	32.33	28.57	97°29'04"
C13	96.00	37.87	37.62	22°35'59"
C14	19.00	28.38	25.82	85°35'14"
C15	37.00	158.79	62.10	245°53'37"
C16	19.00	25.23	23.41	76°04'30"
C17	19.00	21.39	20.27	64°29'23"



Reserve A Details

Benchmark:

- Square cut on west hubguard of RCBC 350' North of centerline of Maple and 15' West of centerline of 151st Street. Elev. 1392.65 MSL Datum
- RR spike in W. Fc PP 22' E. of centerline of 151st St. and 162' S. of N. property line of High Point West Addition. Elev. 1418.20 MSL Datum

Legend:

- Building Setback
- Drainage Easement
- Centerline
- Utility Easement
- Parking Easement
- Street Easement
- Iron Pin

- SB
- DE
- CL
- UE
- PE
- ST
-

Note:

The minimum low opening elevation for homes built on Lots 9 through 13, Block 1 is 1310.0 MSL Datum.

SW CORNER NW 1/4
SEC. 26, T27S, R2W
FOUND SEDG. CO. MONUMENT

POE & ASSOCIATES, INC.
CONSULTING ENGINEERS
5940 E. Central, Suite 200 ■ Wichita KS 67208 ■ 316/825-4114 ■ Fax 316/825-4444