

STATE OF KANSAS
CITY OF WICHITA
SEDGWICK COUNTY

AGNES STREET FROM THE SOUTH LINE OF 37TH ST. NORTH
TO THE NORTH LINE OF 36TH ST. NORTH

GRADING
PAVEMENT

CITY OF WICHITA PROJECT
NO. 472-84610

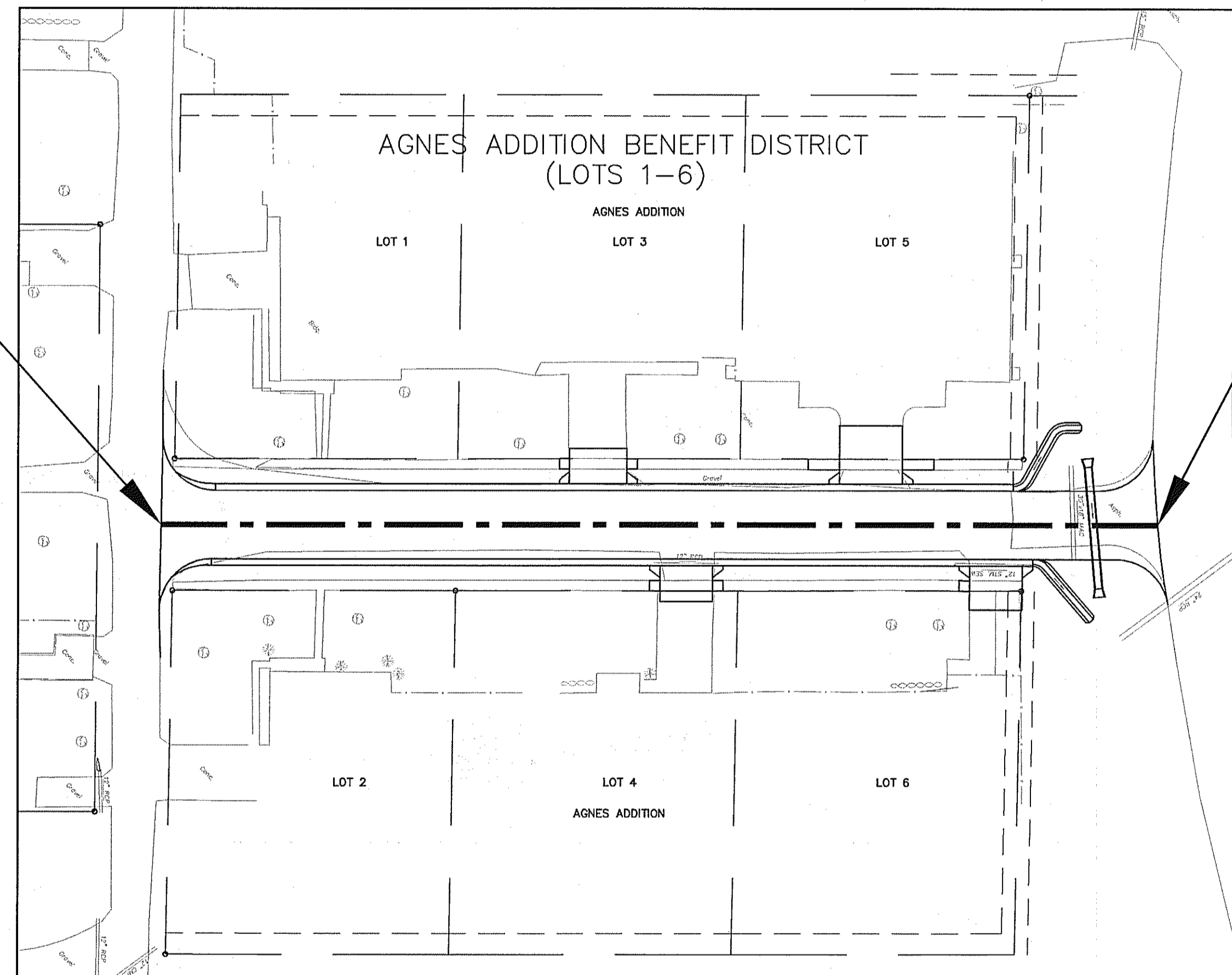
OCA: 766173

INDEX OF SHEETS

- 1-----TITLE SHEET
- 2-----TYPICAL SECTIONS
- 3-----GENERAL NOTES
- 4-----PLAN SHEET
- 5-----DRIVE ENTRANCES STANDARD
- 6-----SUMMARY OF QUANTITIES
- 7-----STORM SEWER PLAN & PROFILE
- 8-----SLOPE DRAIN DETAILS
- 9-----CONCRETE END SECTIONS FOR RCPHE TYPE I
- 10-14---EROSION CONTROL STANDARDS
- 15-17---CROSS SECTIONS

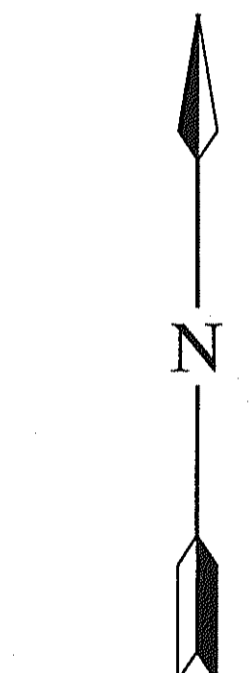
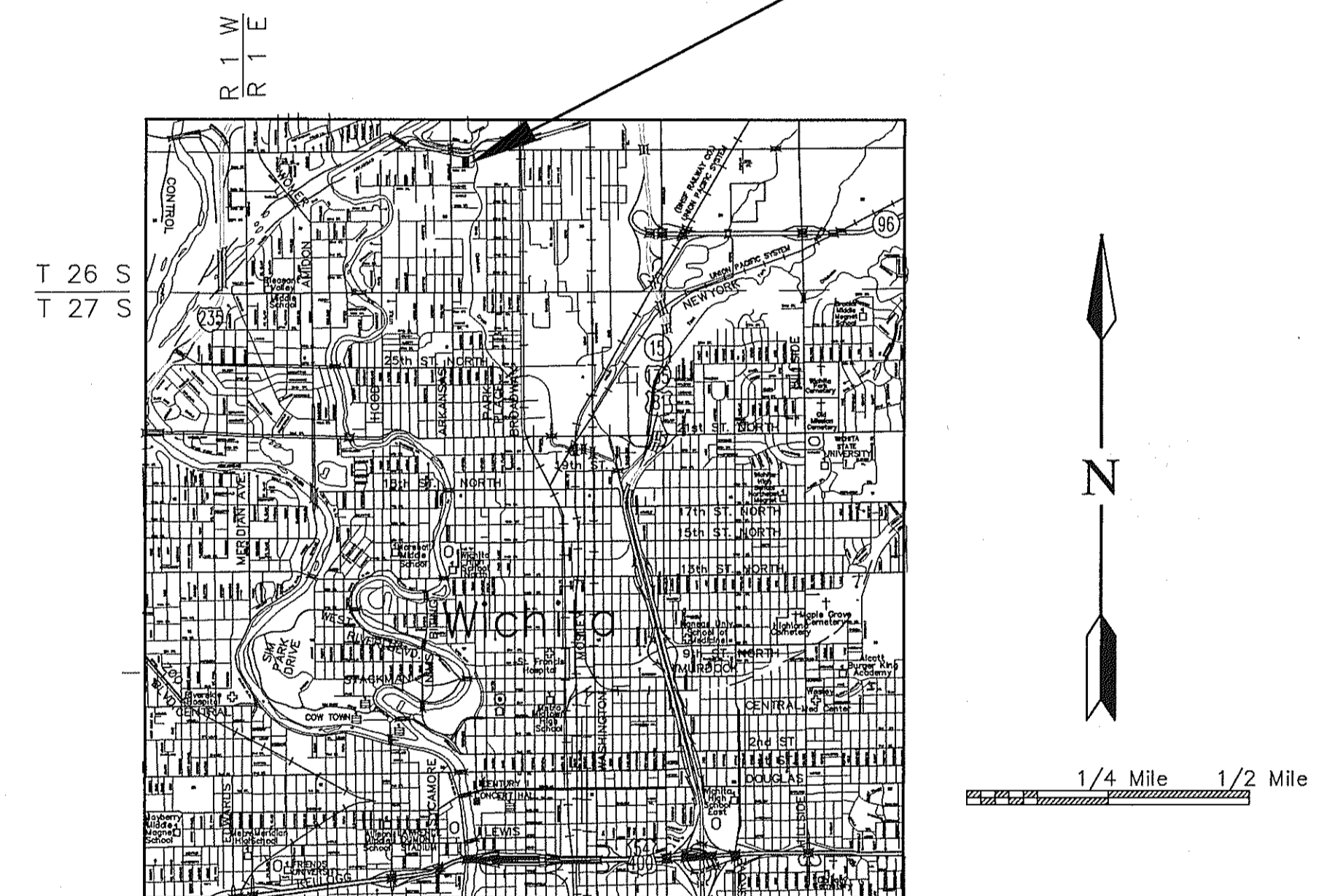


Sta. 50+10.23; BEGIN
PROJECT NO. 472-84610

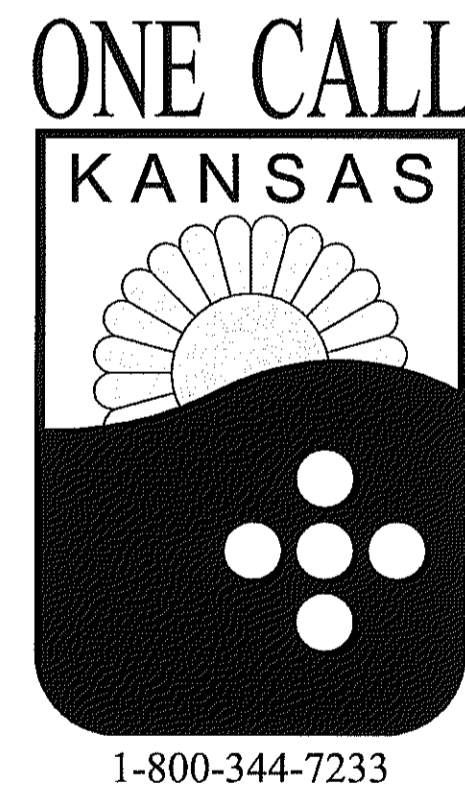


Sta. 53+90.56; END
PROJECT NO. 472-84610

PROJECT
LOCATION



1/4 Mile 1/2 Mile



CONVENTIONAL SIGNS

COUNTY LINE	-----	CENTER LINE OF PROJECT	----- 50 ----- 1
CITY LIMITS	-----	TERRACE	-----
STATE OR NATIONAL LINE	-----	CULVERTS	-----
TOWNSHIP, SECTION or GRANT LINE	-----	DROP INLET & STORM SEWER	-----
PROPERTY LINE	-----	ACCESS CONTROL	-----
HIGHWAY FENCE	-----	POWER POLE	-----
EXISTING FENCE	-----	TELEPHONE POLE	-----
GUARD FENCE	-----	MARSH	-----
CONSTRUCTION LIMITS	-----	HEDGE	-----
RIGHT OF WAY LINE	-----	TREES	-----
TRAVELED WAY	-----	PROFILE ELEVATION	-----
RAILROADS	-----	STREAM or CREEK	-----

GENERAL NOTE

ALL CONSTRUCTION METHODS AND MATERIALS USED IN THE CONSTRUCTION OF THE IMPROVEMENTS COVERED BY THESE PLANS SHALL BE IN ACCORDANCE WITH THE STANDARD TECHNICAL SPECIFICATIONS AND CURRENT REVISIONS ON FILE IN THE OFFICE OF THE CITY ENGINEER, CITY OF WICHITA, KANSAS. THE CITY ENGINEERS DECISIONS ON QUESTIONS REGARDING THESE PLANS SHALL GOVERN.

GROSS LENGTH OF PROJECT	380.33	ft.
EXCEPTIONS	0.00	ft.
NET LENGTH OF PROJECT	380.33	ft.
NET LENGTH OF BRIDGES	0.00	ft.
NET LENGTH OF ROAD	380.33	ft.

CITY OF WICHITA, KANSAS
DEPARTMENT OF PUBLIC WORKS - ENGINEERING DIVISION

RELEASED FOR CONSTRUCTION: _____ DATE _____
CITY ENGINEER

ATTESTED: _____ DATE _____
CITY CLERK

PLANS PREPARED BY:
CFS Cook, Flatt & Strobel
ENGINEERS, P.A.

