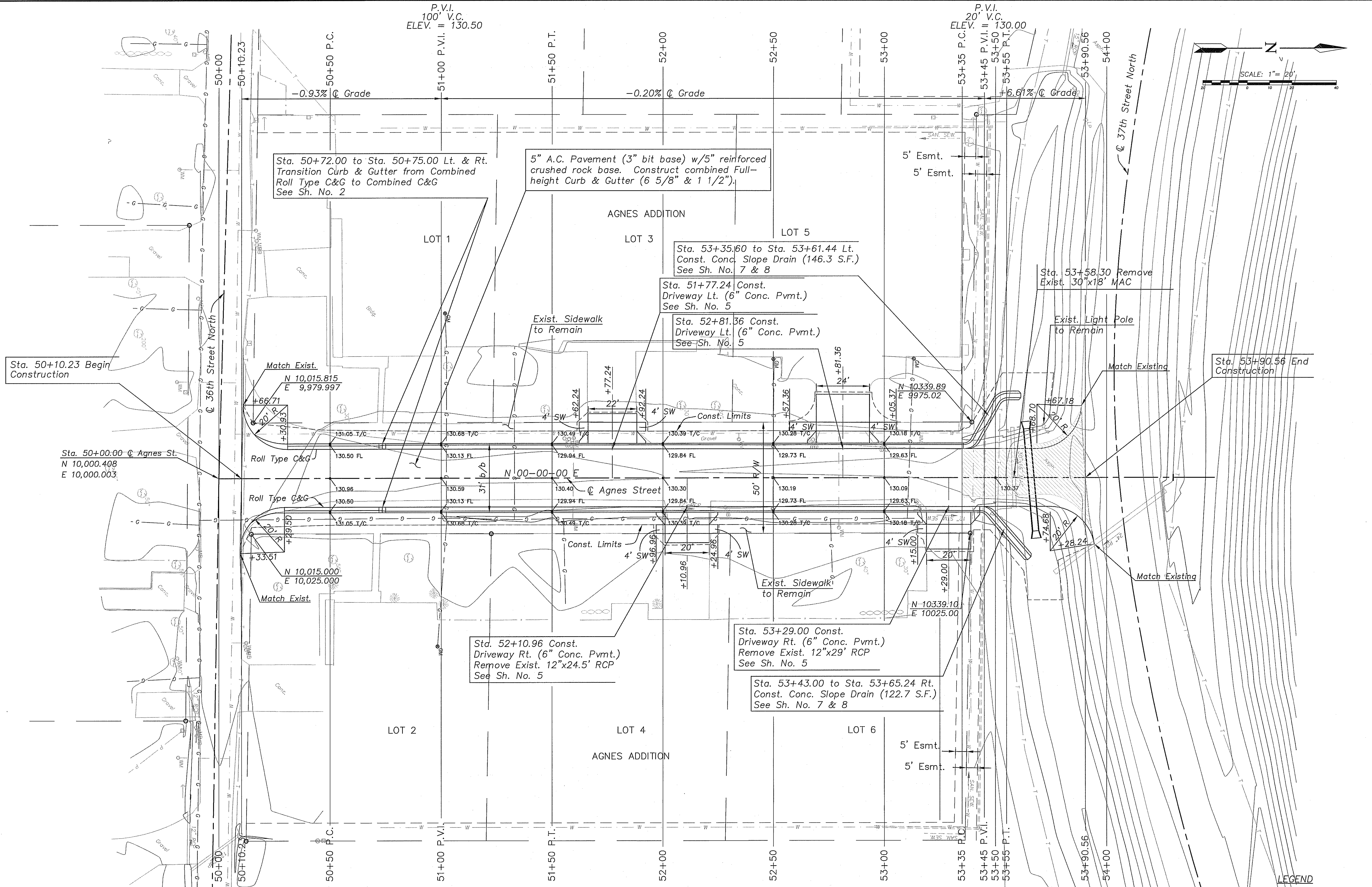
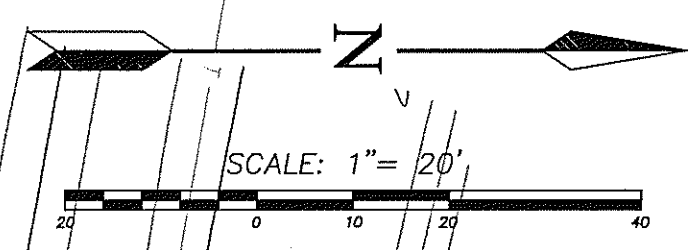


P.V.I. 100' V.C. ELEV. = 130.50

P.V.I. 20' V.C. ELEV. = 130.00



BM #1 - S.E. Cor. Conc. Porch @ E. Side of Bldg. @ 520 36th Street N. 49.8' Lt. Sta. 50+56 El.=131.90

BM #2 - N.E. Cor. Conc. Drive 6.0' ± E. of S.E. Cor. Bldg. @ 3743 Agnes Street. 44.8' Lt. Sta. 53+10 El.=132.21

Remove Exist. Asph.

REVISION

SEAL:

Cook, Flatt & Strobel ENGINEERS, P.A.

CFS PROJECT NO: 08-509

CITY OF WICHITA, KANSAS  
**AGNES STREET**  
 WEST 36TH ST. NORTH TO WEST 37TH ST. NORTH  
 DATE: Aug. 2008 DESIGNED BY: KKH DRAWN BY: BMG CHECKED BY: KYB

SHEET TITLE:  
**PLAN SHEET**

PROJECT NUMBER  
 472-84610

OFFICE CHECK

SHEET NUMBER:  
**4 of 17**

J:\2008Proj\08509\DWGS\04-PLAN.dwg 8/12/2008 - 5:24pm