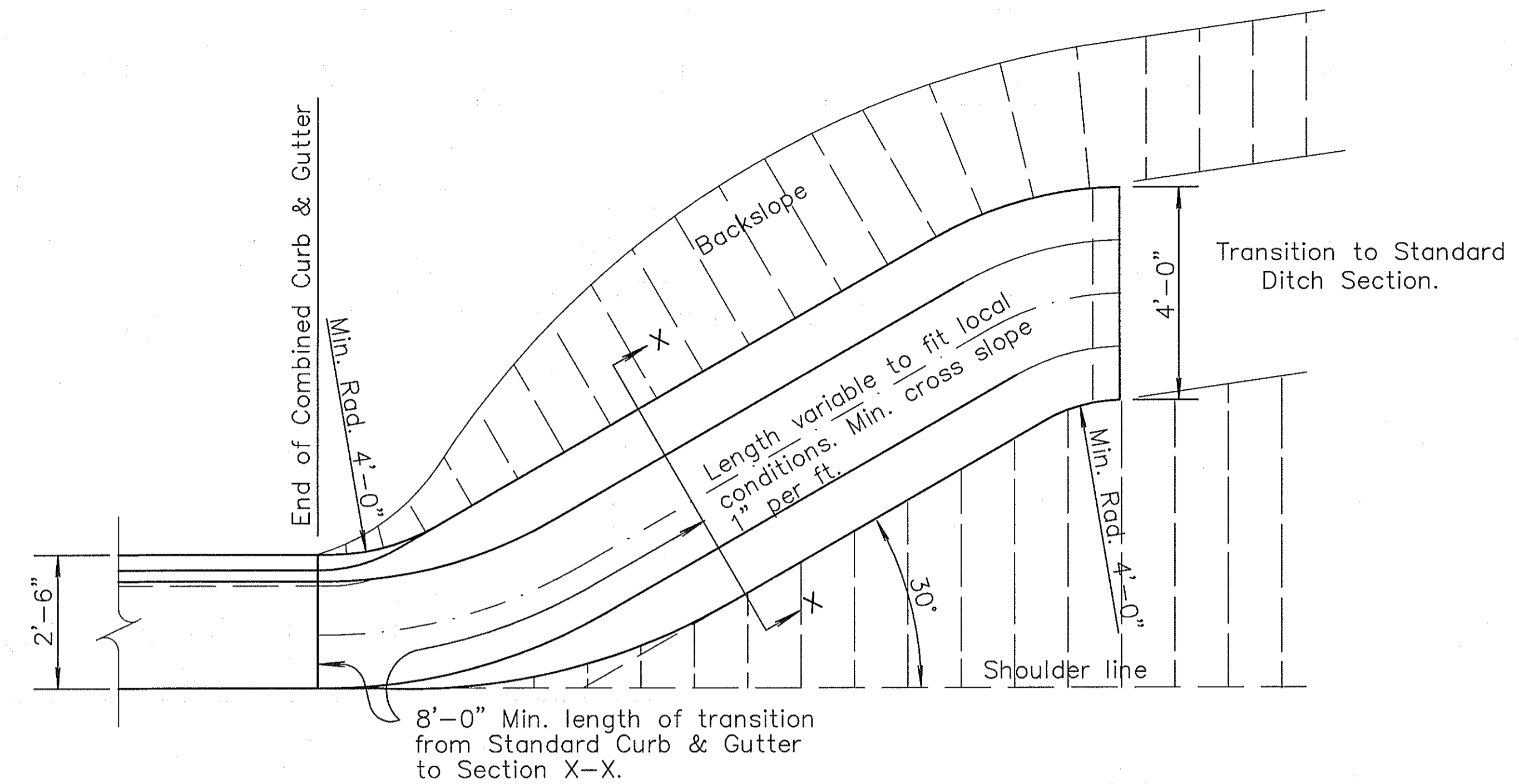
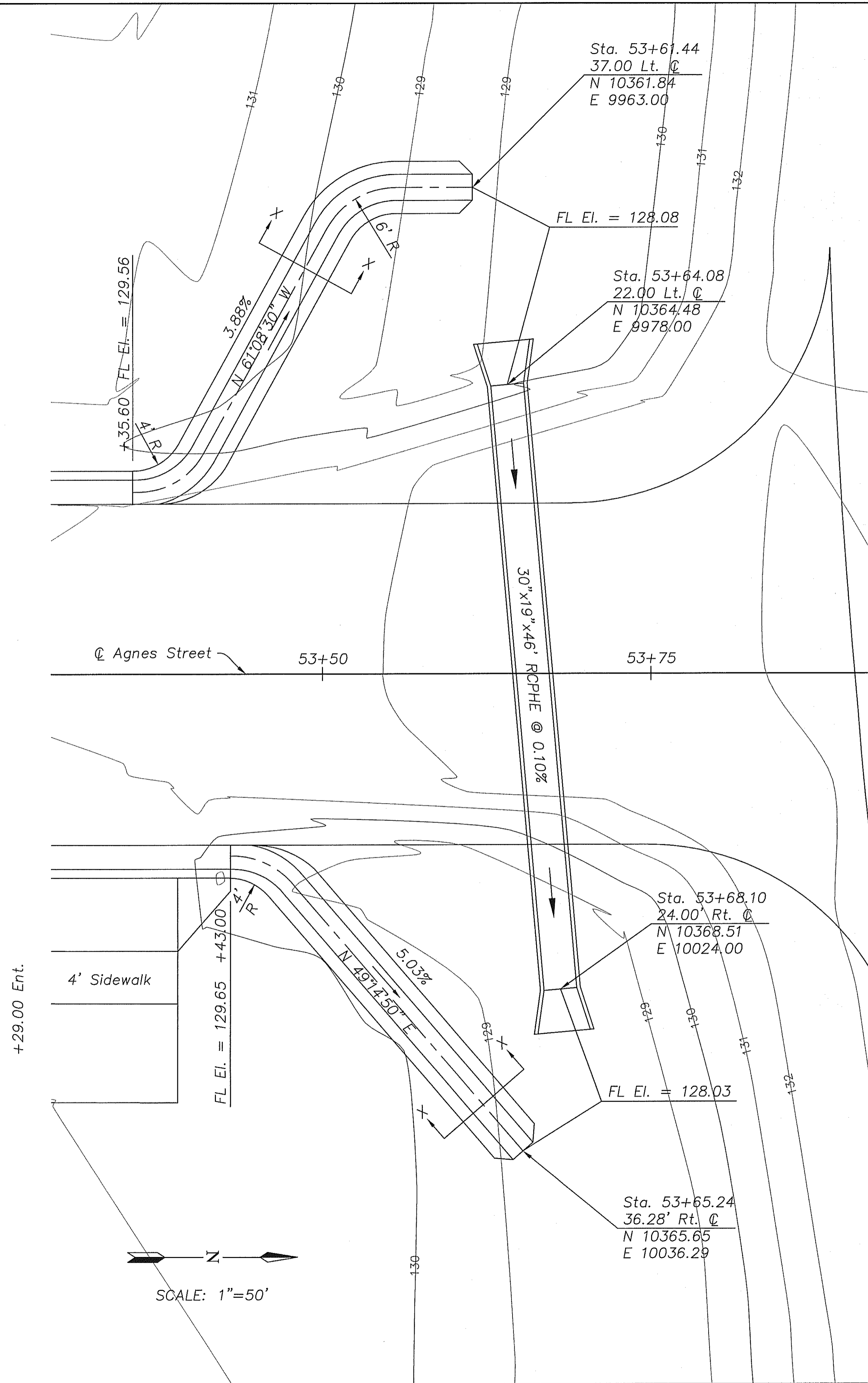
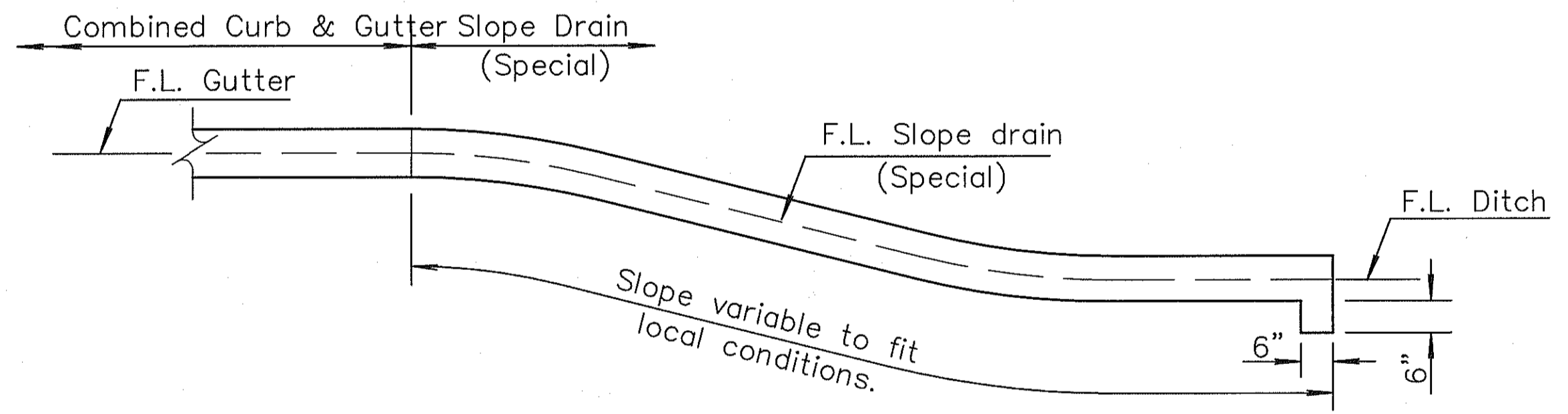


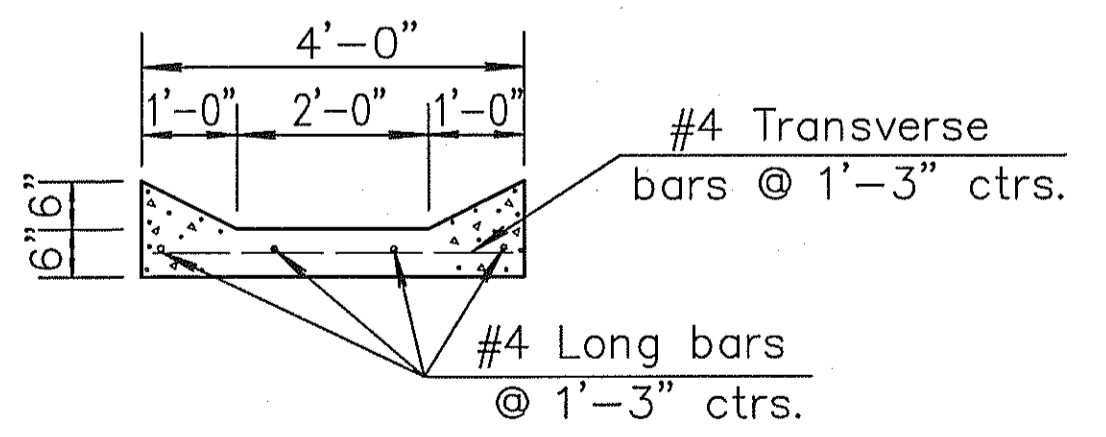
J:\2008Proj\08509\DWGS\08-SLOPE DRAIN-RD722.dwg 8/07/2008 - 4:34pm



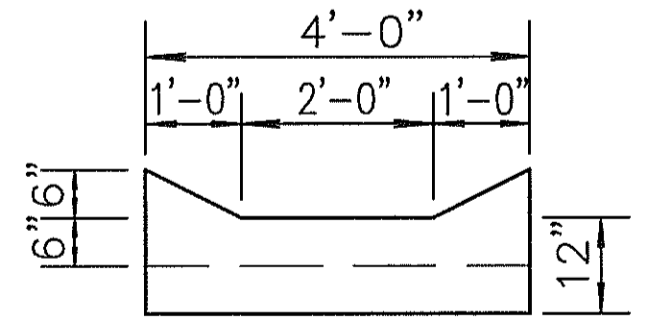
TYPICAL PLAN



TYPICAL ELEVATION



SECTION X-X



END ELEVATION (Downstream end)

SLOPE DRAIN (SPECIAL)

Note: Use Concrete Grade 3.0 (AE) throughout. The entire area of the Slope Drain (Special) below the curbs, to be poured and struck off with a uniform thickness of 6". The curbs are to be applied in the same manner and using the same methods as for edge curb. Reinforcing steel to be deformed #4 bars.

REVISED
 SEAL: KEVIN K. HOLLAND
 LICENSED PROFESSIONAL ENGINEER
 16491
 8/20/08
 KANSAS

Cook, Flatt & Strobel
 ENGINEERS, P.A.
 CFS

CFS PROJECT NO:
 08-509

CITY OF WICHITA, KANSAS
AGNES STREET
 WEST 36TH ST. NORTH TO WEST 37TH ST. NORTH
 DATE: Aug. 2008 DESIGNED BY: KKH DRAWN BY: BMG CHECKED BY: KWB

SHEET TITLE:
SLOPE DRAIN (SPECIAL) DETAILS

PROJECT NUMBER
 472-84610

OFFICE CHECK

SHEET NUMBER:
8 of 17