

I-235 Highway

EX. MH  
STA 0+00.00 LINE 1  
CORE DRILL AND GROUT  
EXISTING MANHOLE.  
TOP ELEV. = 1311.30

MH 1-1  
STA 0+74.03 LINE 1  
CONSTRUCT STD. TYPE P MH  
TOP ELEV. = 1313.00

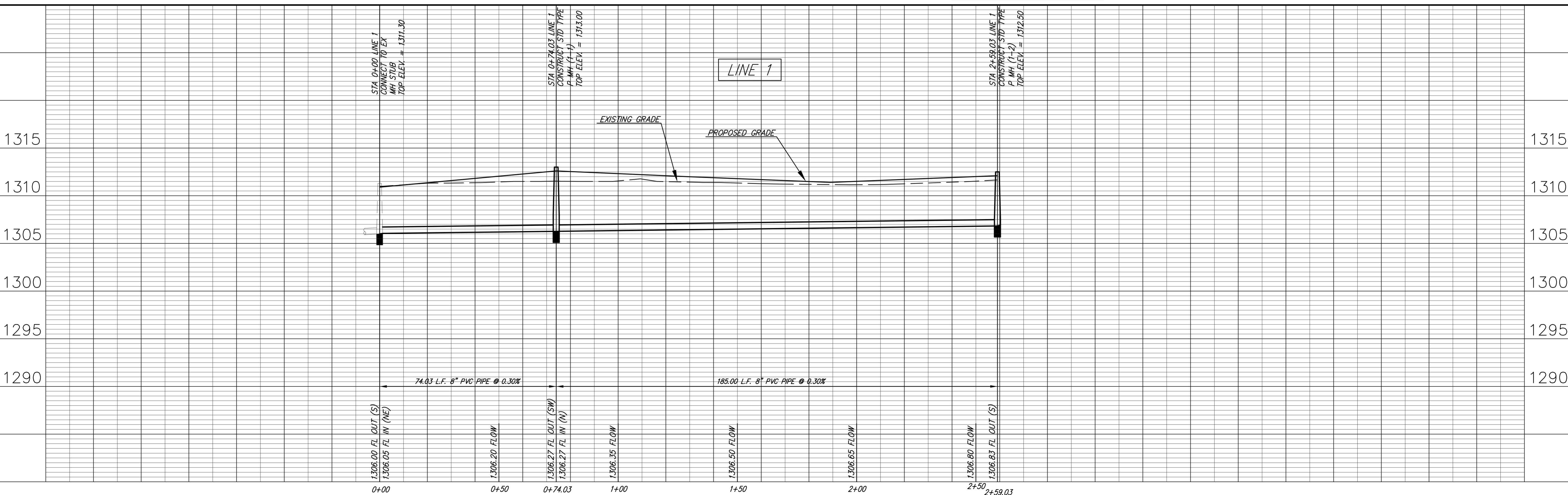
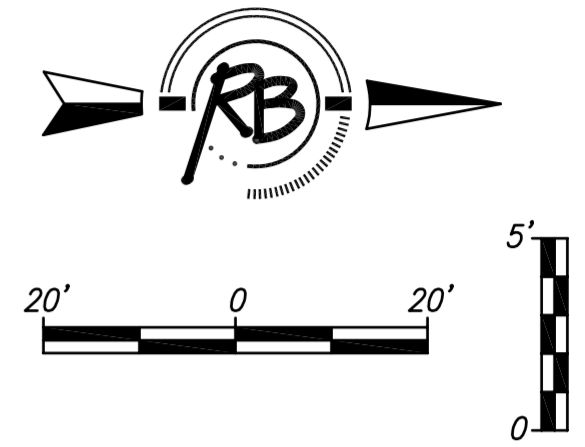
MH 1-2  
STA 2+59.03 LINE 1  
CONSTRUCT STD. TYPE P MH  
TOP ELEV. = 1312.50

Unplatted  
Owner: Kathleen M & Richard H. Aguilera

Unplatted  
Owner: Neva M. Weston Trust No. 1

Armstrong Estates

TRIM AND REMOVE TREES ONLY AS NECESSARY TO CONSTRUCT SANITARY SEWER LINE. SUBSIDIARY TO BID ITEM FOR "SITE CLEARING AND RESTORATION".



REVISIONS

NO.	DATE	DESCRIPTION
1	Sept. 24, 2008	REVIEW

DESIGN: KWL  
DRAWN: MLP  
PROJECT NUMBER: 472-84283  
DRAWING FILE: [LINE 1]  
ENG BASE: [LINE 1]

ARMSTRONG ESTATES  
Sanitary Sewer  
WICHITA, KANSAS

RB JOB 5285X  
SHEET 2 OF 12

Ruggles & Dohm, P.A.  
Engineering, Surveying, Land Planning  
804 North Main  
Wichita, Kansas 67203  
www.ruggles.com