

**NOTES:**

- SEE GENERAL EARTHWORK NOTES ON GRADING PLAN.
- STRIP 6" TOPSOIL FROM ALL DISTURBED AREAS OF SITE AND STOCKPILE IN APPROVED LOCATION FOR SPREADING IN UNBUILT AND UNPAVED AREAS OF SITE FOLLOWING CONSTRUCTION. SUBSIDIARY TO SITE CLEARING AND RESTORATION.
- ENGINEERED STAKED-IN-PLACE ORGANIC-FILLED EROSION CONTROL TUBES MAY BE USED IN LIEU OF SILT FENCE AND STRAW BALES. SUBMIT DESIGNS OF ALTERNATE SOLUTIONS TO ENGINEER FOR APPROVAL PRIOR TO INSTALLATION.

**GENERAL NOTES:**

- THE INTENT OF ALL BEST MANAGEMENT PRACTICES (B.M.P.'S) IS TO PREVENT ERODED SOIL FROM ENTERING DITCHES, STORM SEWERS, OR ANY OTHER DRAINAGE FEATURE.
- THIS SHEET IS INTENDED TO PROVIDE GUIDELINES AS TO WHAT TYPE OF BMP'S WILL BE INSTALLED DURING THE CONSTRUCTION PROCESS. CONTRACTORS ARE EXPECTED TO BID PROJECTS ACCORDINGLY.
- BMP'S SHALL BE MAINTAINED DURING THE CONSTRUCTION PROCESS TO REMAIN EFFECTIVE. MAINTENANCE SHALL BE AS INDICATED ON THE BMP DETAILS.
- PERSONS DESTROYING BMP'S SHALL BE RESPONSIBLE FOR IMMEDIATELY REPAIRING THEM OR INSTALLING SUITABLE REPLACEMENT BMP'S.

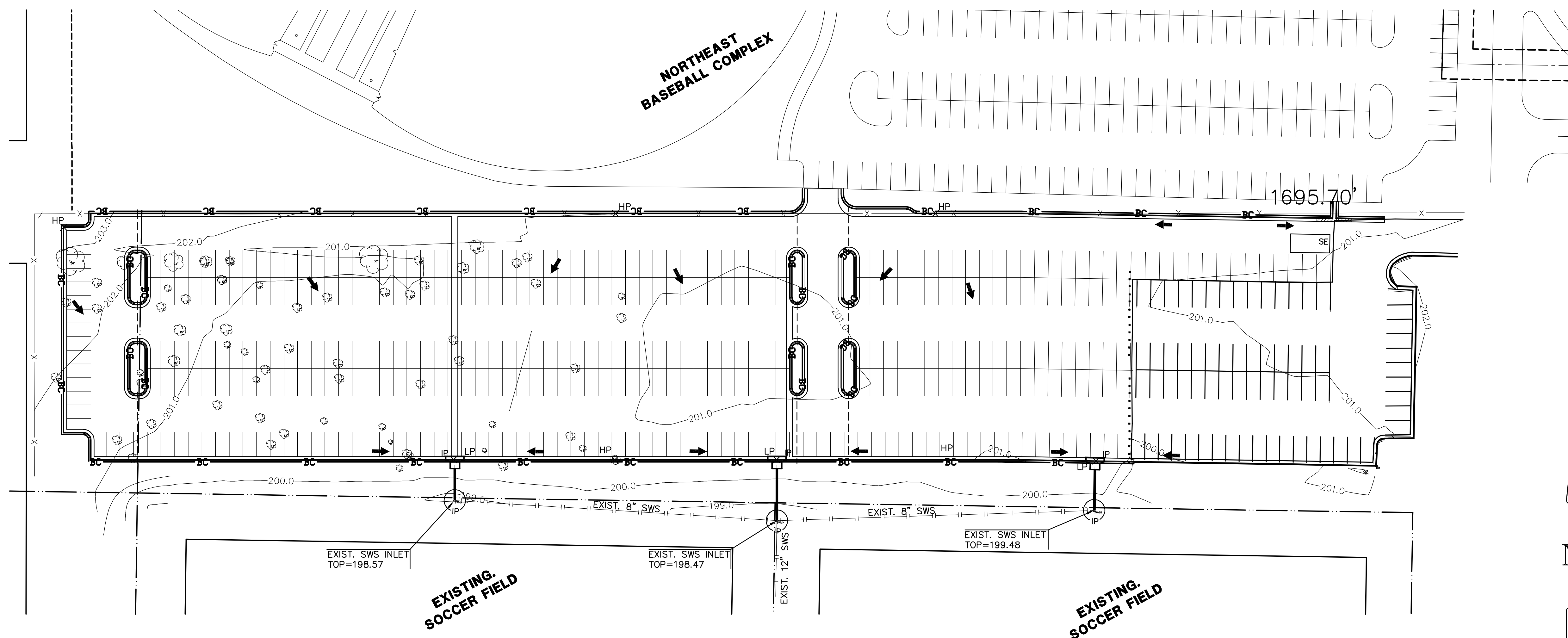
- THE DEVELOPMENT OF ANY PROJECT THAT DISTURBS 5 ACRES OR MORE WILL REQUIRE A FEDERAL/STATE NPDES STORMWATER PERMIT. THE PREPARATION OF A STORMWATER POLLUTION PREVENTION PLAN IS REQUIRED. EROSION CONTROL BMP'S ARE REQUIRED. THE DETAILS SHOWN ON THIS SHEET ARE THE MINIMUM STANDARDS TO BE SHOWN ON POLLUTION PREVENTION PLAN.
- FOR PROJECTS SMALLER THAN 5 ACRES, SOIL EROSION BMP'S ARE REQUIRED. ALSO, DEVELOPERS AND CONTRACTORS ARE ENCOURAGED TO DEVELOP POLLUTION PREVENTION PLANS FOR EACH PROJECT PRIOR TO CONSTRUCTION.
- FAILURE TO USE AND MAINTAIN BMP'S IS A VIOLATION OF SECTION 16.32 OF THE CITY CODE AND WILL SUBJECT THE SUBDIVISION DEVELOPER AND CONTRACTORS TO THE PENALTIES PROVIDED THEREIN.
- THE APPLICATION OF BMP'S SHOWN ON THIS SHEET IS FOR SITUATIONS NORMALLY ENCOUNTERED. FROM TIME TO TIME, SITUATIONS WILL ARISE THAT MAY REQUIRE A DIFFERENT BMP OTHER THAN THAT SHOWN. BMP'S, OTHER THAN THOSE SHOWN, MAY BE UTILIZED SO LONG AS THEY ARE EFFECTIVE AND MAINTAINED.
- A STABILIZED EARTH SURFACE IS DEFINED AS ONE THAT IS HARD SURFACED WITH CONCRETE, ASPHALT, OR THE LIKE, OR ONE ON WHICH 70% OF THE GRASS HAS GERMINATED ON THE ENTIRE SURFACE.

**EROSION CONTROL**

- THE POINTS OF COMPLIANCE ARE THE PERIMETER BOUNDARIES AND ANY DRAINAGE WAYS OR STORM SEWERS DRAINING THROUGH OR FROM THE SITE. SHOULD LAKES BE CONSTRUCTED WITHIN THE PROJECT THAT WILL DISCHARGE DURING STORMS, THEY ARE ALSO A POINT OF COMPLIANCE.
- HAYBALES OR SILT FENCE MUST BE CONSTRUCTED ALONG THE PROPERTY LINE WHERE ON SITE WATER CAN DRAIN OFF THE PROPERTY. THESE BMP'S WILL ALSO BE INSTALLED ALONG ANY DRAINAGE DITCH OR LAKE THAT CAN DISCHARGE.
- SHOULD SILT OR SEDIMENT ENTER THE DITCHES OR GUTTERLINES ON THE ADJACENT BOUNDRY STREETS, APPROPRIATE BMP'S WILL BE PLACED WITHIN THE PROJECT TO PREVENT THIS.
- ANY MUD TRACKED ONTO ADJACENT STREETS WILL BE REMOVED AT THE END OF EACH WORK DAY.
- CONTRACTORS WORKING WITHIN THE SITE WILL NOT BE REQUIRED TO USE INDIVIDUAL BMP'S AS LONG AS THOSE SPECIFIED ABOVE ARE IN PLACE AND EFFECTIVE. CONTRACTORS WORKING ON THE BOUNDARY LINE STREETS OR ON ADJACENT PROPERTIES TO EXTEND UTILITIES ARE EXPECTED TO USE BMP'S AT THEIR WORK LOCATIONS, AS NEEDED.
- UTILIZE STABILIZED CONSTRUCTION ENTRANCE AT ENTRANCE AND EXIT ONTO ANY EXISTING PUBLIC STREETS.

**LEGEND**

<ul style="list-style-type: none"> <li>6IN - CONIFEROUS TREE</li> <li>3IN - DECIDUOUS TREE</li> <li>SN - SIGN</li> <li>PP - POWER POLE</li> <li>ELEC BOX - ELECTRIC BOX</li> <li>LP - LIGHT POLE</li> <li>FH - FIRE HYDRANT</li> <li>WV - WATER VALVE</li> <li>WM - WATER METER</li> <li>SC - SECTION CORNER</li> <li>BM - BENCHMARK</li> <li>--- - EASEMENT</li> <li>--- - BUILDING SETBACK</li> <li>-x-x- - FENCE</li> </ul>	<ul style="list-style-type: none"> <li>--- - STORM SEWER PIPE</li> <li>W - WATER LINE</li> <li>--- - SANITARY SEWER LINE</li> <li>G - GAS LINE</li> <li>P - GAS PIPELINE</li> <li>UGT - TELEPHONE LINE</li> <li>UGE - UNDERGROUND ELEC.</li> <li>OHE - OVERHEAD ELECTRIC</li> <li>FOC - FIBER OPTIC CABLE !</li> <li>SB - SILT BARRIER</li> <li>IP - INLET PROTECTION</li> <li>SE - STABILIZED ENTRANCE</li> <li>→ - DIRECTION OF PROPOSED DRAINAGE</li> </ul>
--------------------------------------------------------------------------------------------------------------------------------------------------------------------------------------------------------------------------------------------------------------------------------------------------------------------------------------------------------------------------------------------------------------------------------	----------------------------------------------------------------------------------------------------------------------------------------------------------------------------------------------------------------------------------------------------------------------------------------------------------------------------------------------------------------------------------------------------------------------------------------------------------------



**CONSTRUCTION SEQUENCING**

- CLEARING/GRUBBING - STABILIZED ENTRANCE IMPLEMENTED/ SILT BARRIER INSTALLED
- GRADING
- STORM SEWER CONSTRUCTION/ INLET PROTECTION IMPLEMENTED
- PAVING CONSTRUCTION/ BACK OF CURB PROTECTION IMPLEMENTED
- FINAL STABILIZATION/ BACK OF CURB PROTECTION REMOVED
- SILT BARRIER REMOVED
- STABILIZED ENTRANCE REMOVED

PLOTTED: Tuesday, June 24, 2008 @ 01:16PM

J:\CIVIL\07068\DWG\07068SWPPP.DWG