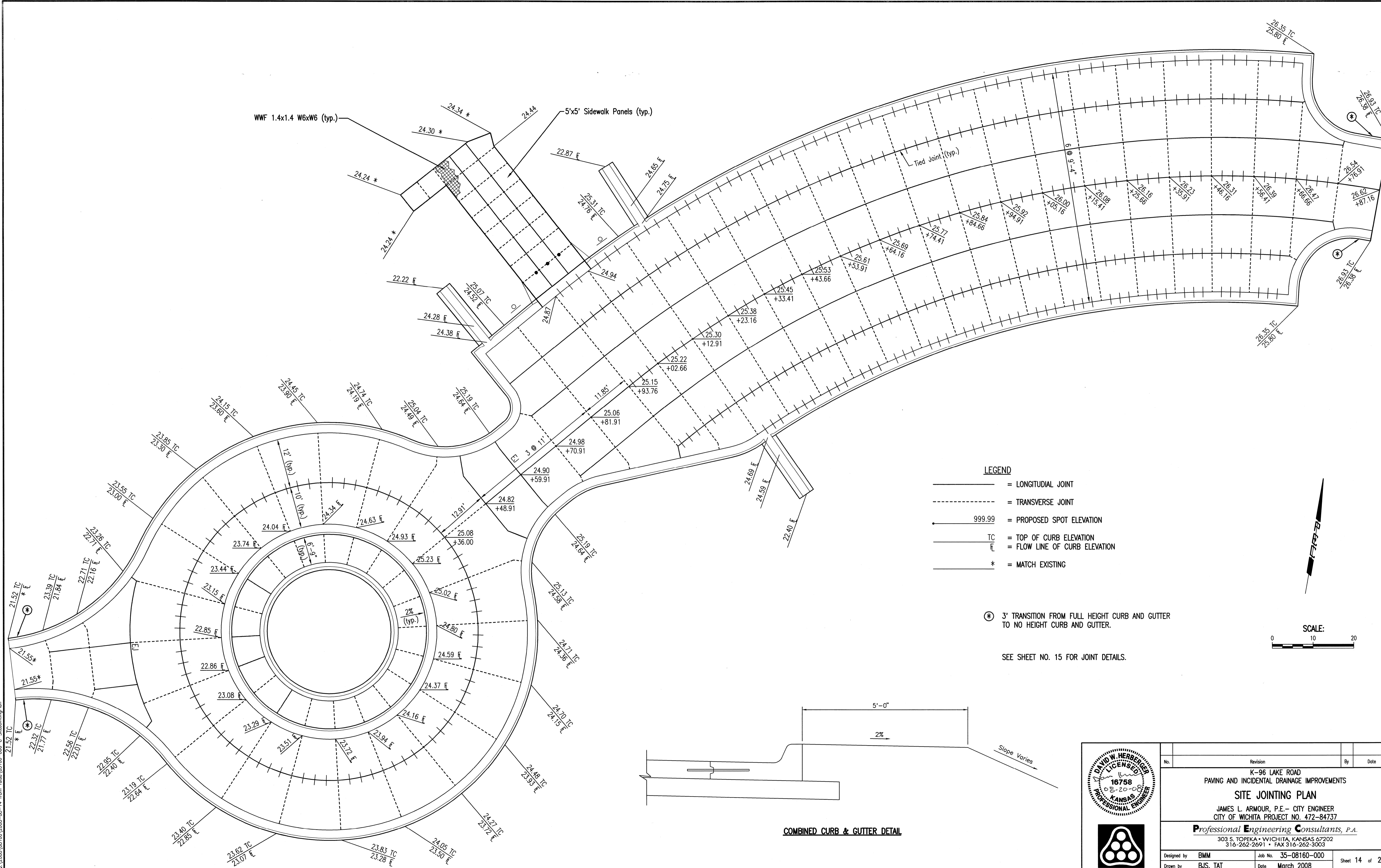


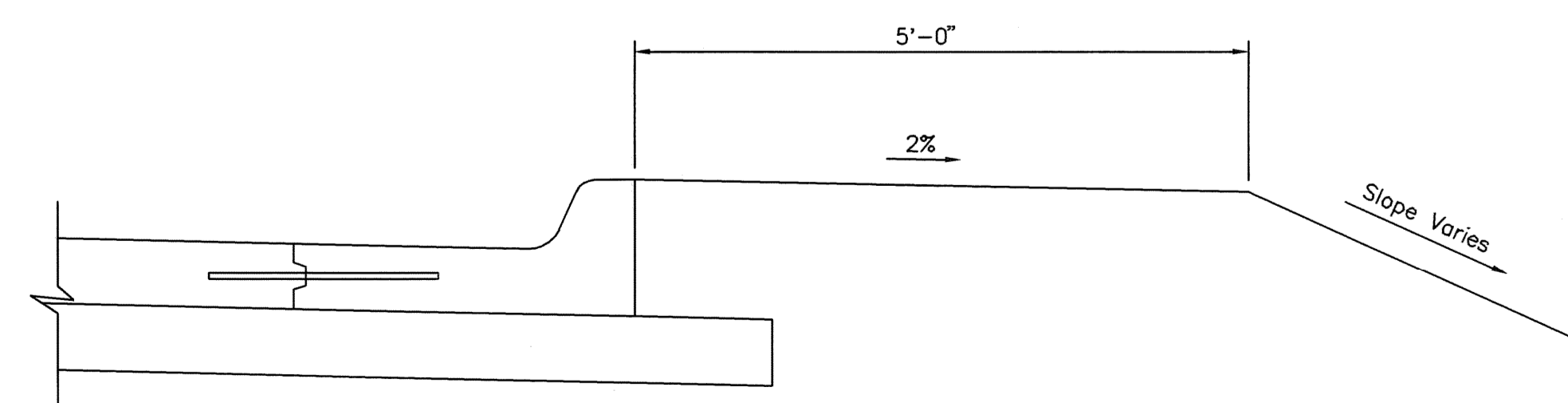
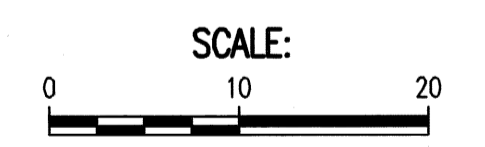
Saved: 08-18-2008 7:08:58 PM by JAI  
 C:\2008\08160\2008-08-14 from Tulsa\08160-000-C-SubdrainPlan



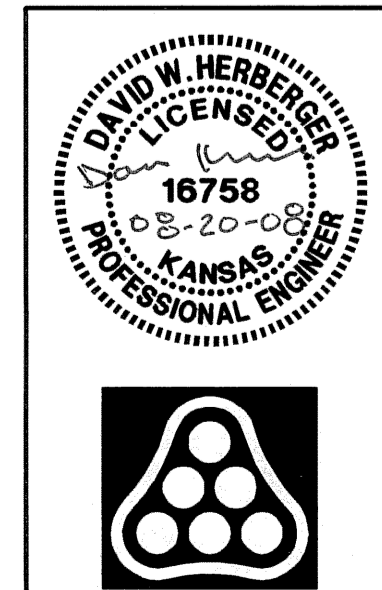
- LEGEND**
- = LONGITUDIAL JOINT
  - - - - - = TRANSVERSE JOINT
  - 999.99 = PROPOSED SPOT ELEVATION
  - TC = TOP OF CURB ELEVATION
  - F = FLOW LINE OF CURB ELEVATION
  - \* = MATCH EXISTING

⊙ 3' TRANSITION FROM FULL HEIGHT CURB AND GUTTER TO NO HEIGHT CURB AND GUTTER.

SEE SHEET NO. 15 FOR JOINT DETAILS.



**COMBINED CURB & GUTTER DETAIL**



No.	Revision	By	Date
K-96 LAKE ROAD PAVING AND INCIDENTAL DRAINAGE IMPROVEMENTS <b>SITE JOINTING PLAN</b> JAMES L. ARMOUR, P.E. - CITY ENGINEER CITY OF WICHITA PROJECT NO. 472-84737 <b>Professional Engineering Consultants, P.A.</b> 303 S. TOPEKA • WICHITA, KANSAS 67202 316-262-2691 • FAX 316-262-3003			
Designed by	BMM	Job No.	35-08160-000
Drawn by	BJS, TAT	Date	March 2008
			Sheet 14 of 29