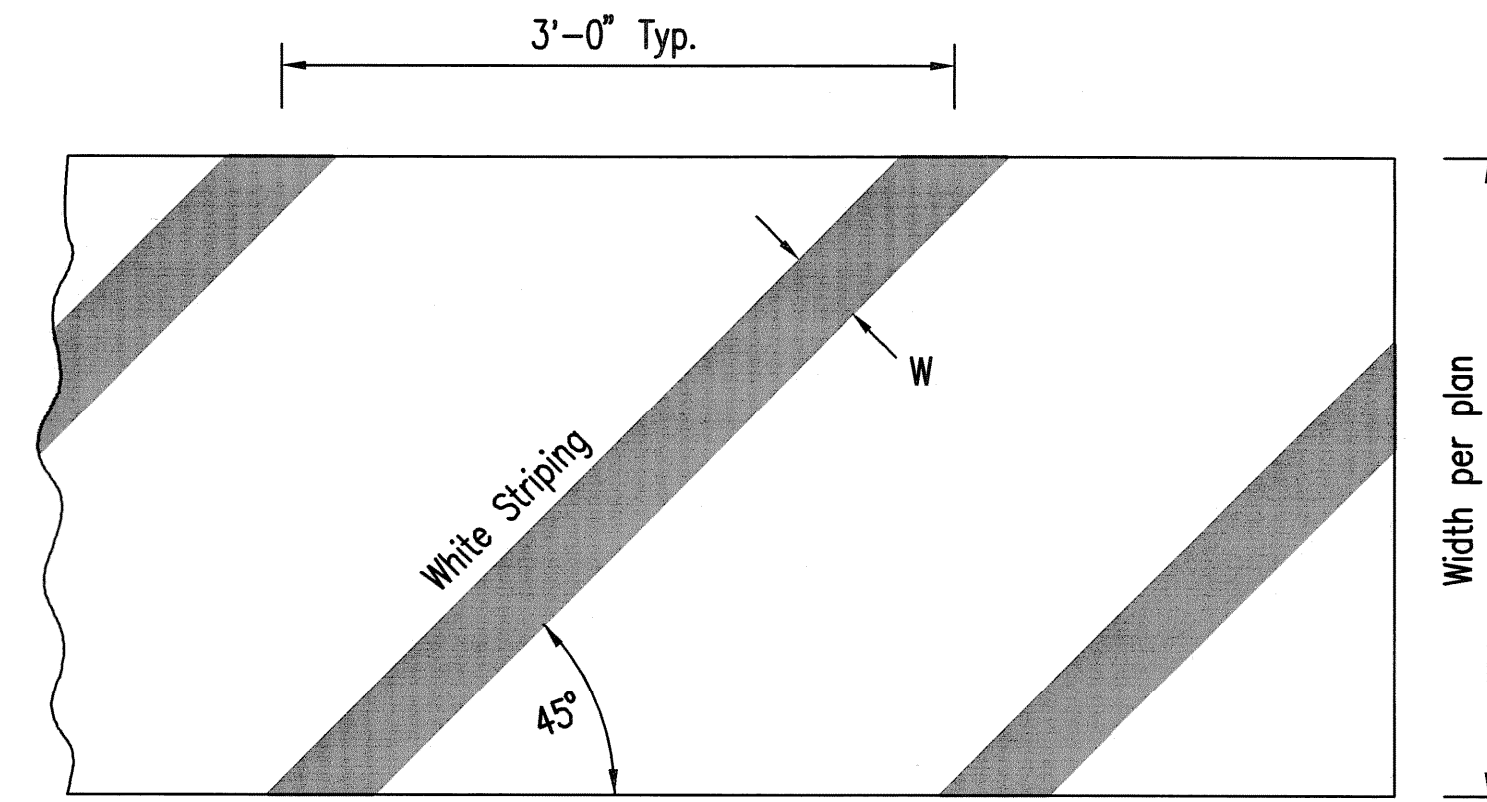


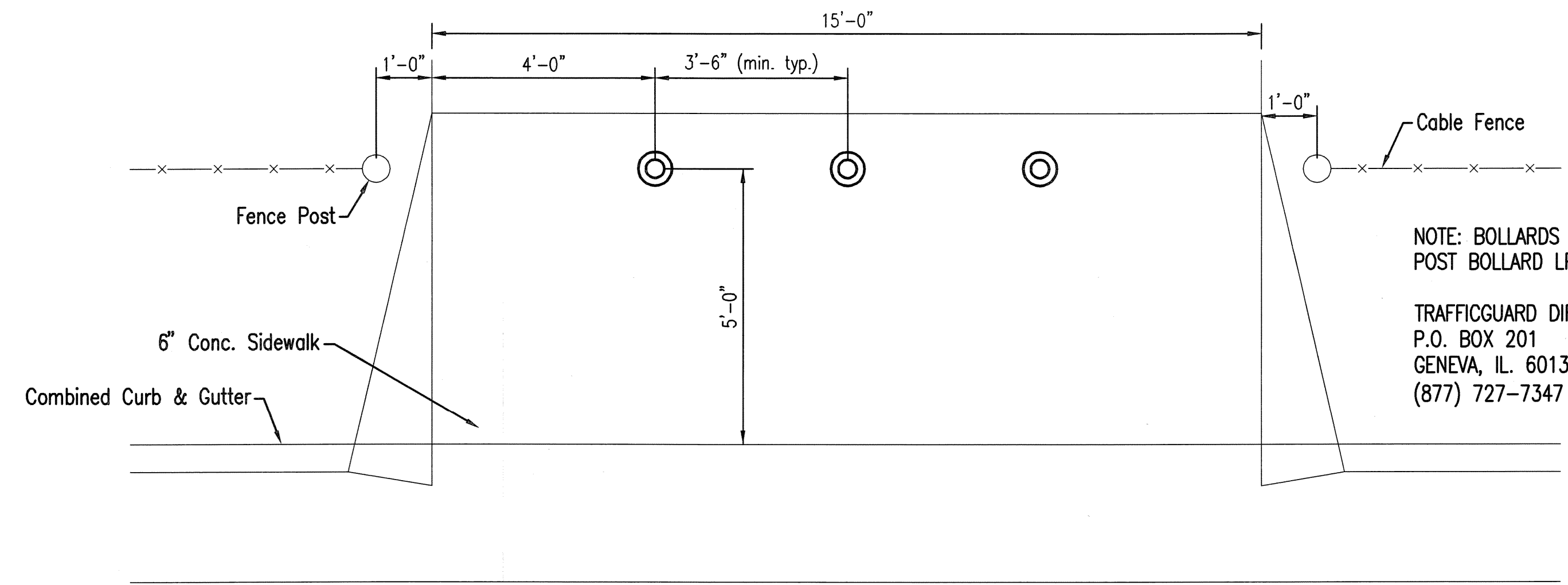
HANDICAP SYMBOL



W = 4", Parking Areas

STRIPING CROSS HATCH

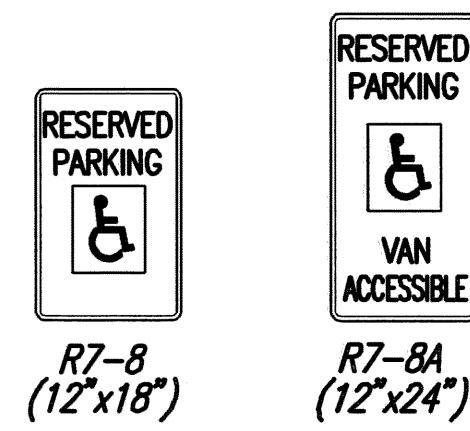
NOTE: STRIPING SHALL BE DONE WITH STANDARD HIGH BUILD TRAFFIC PAINT. ALL PAVEMENT MARKING SHALL BE WHITE OR YELLOW AS DIRECTED BY THE CITY.



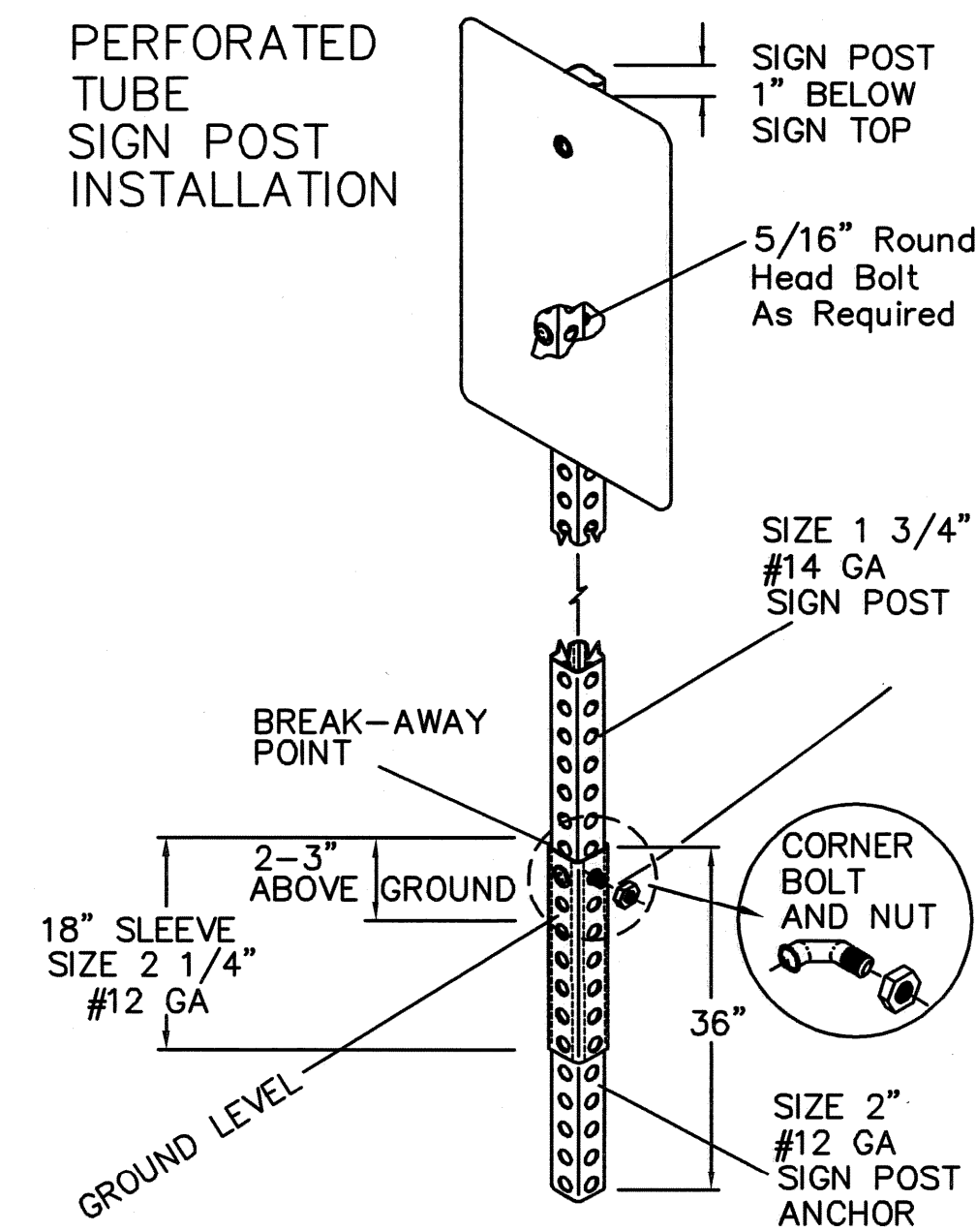
BOLLARD DETAIL

NOTE: BOLLARDS SHALL BE TRAFFICGUARD SINGLE POST BOLLARD LPHDHB OR APPROVED EQUAL.

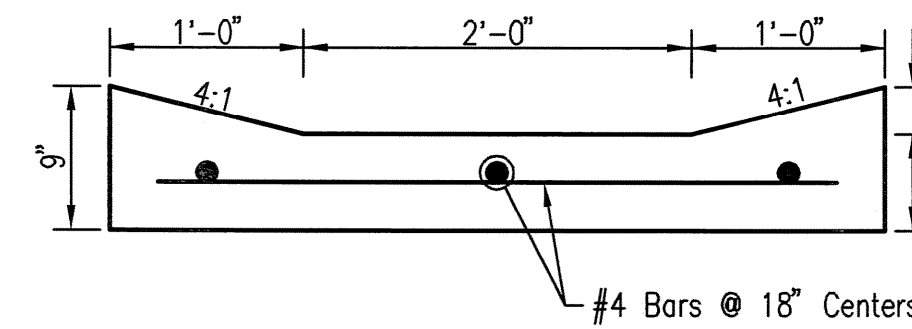
TRAFFICGUARD DIRECT, LLC.
P.O. BOX 201
GENEVA, IL. 60134-9946
(877) 727-7347



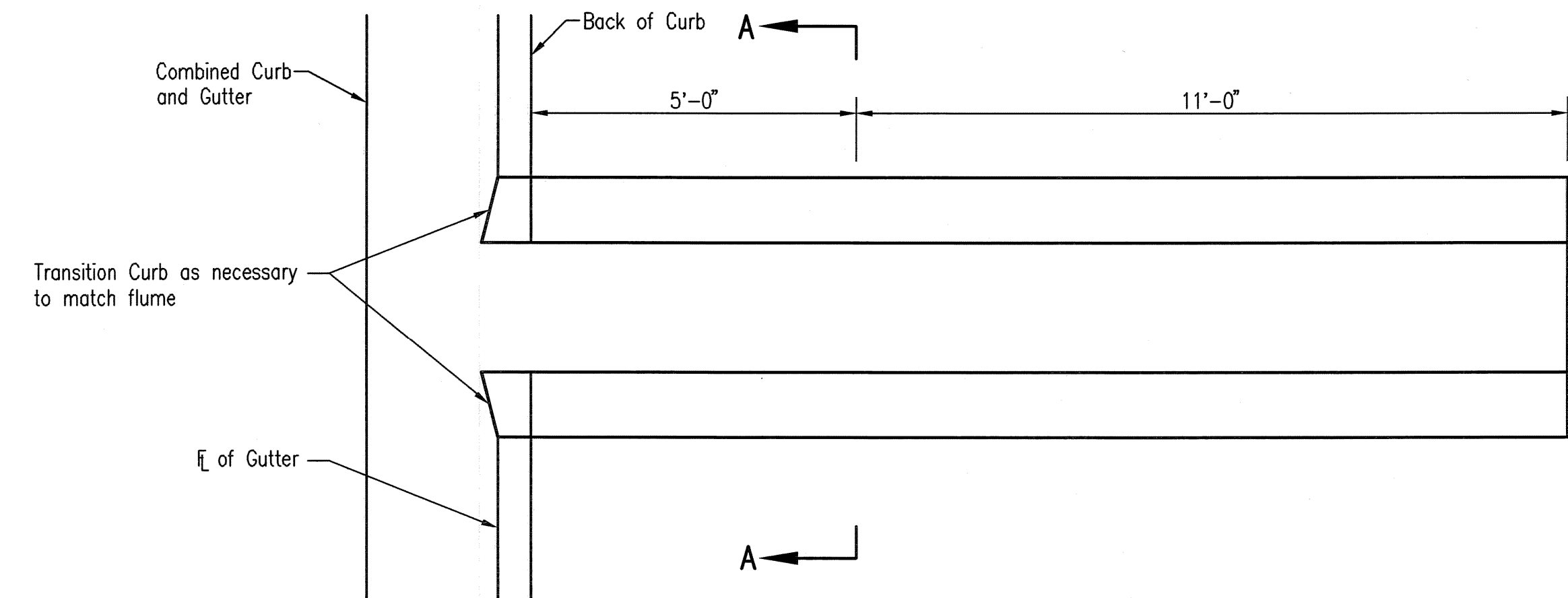
PERFORATED TUBE SIGN POST INSTALLATION



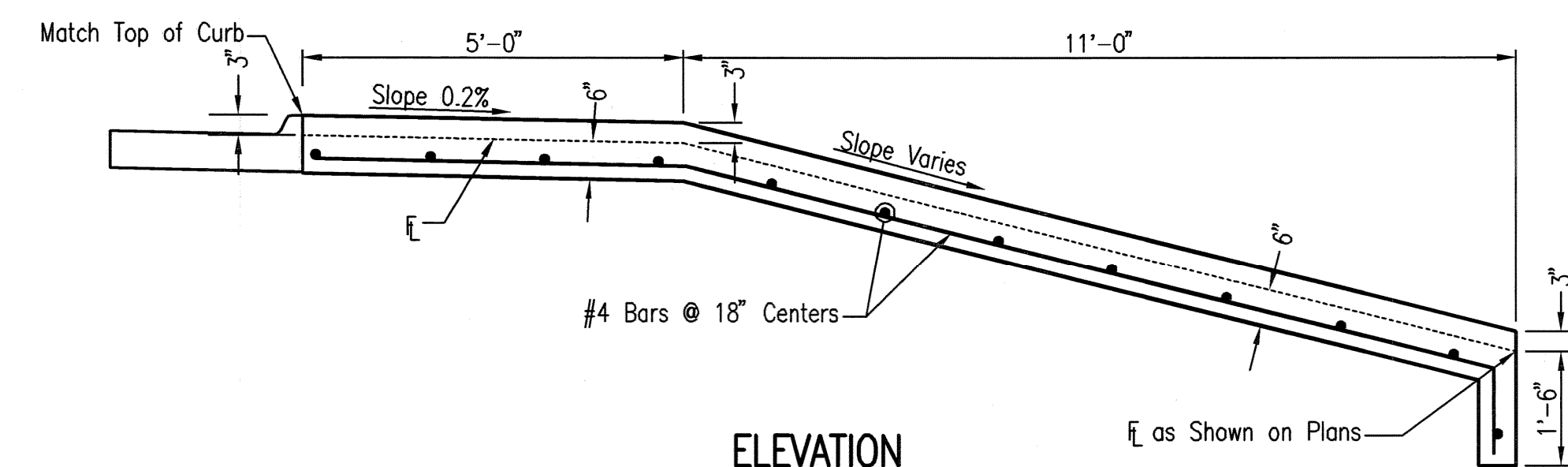
TYPICAL TRAFFIC CONTROL SIGNING INSTALLATION DETAIL CURB AND GUTTER SECTION



SECTION A-A



PLAN



ELEVATION

CONCRETE FLUME DETAIL



No.	Revision	By	Date
K-96 LAKE ROAD PAVING AND INCIDENTAL DRAINAGE IMPROVEMENTS MISCELLANEOUS DETAILS JAMES L. ARMOUR, P.E. - CITY ENGINEER CITY OF WICHITA PROJECT NO. 472-84737 Professional Engineering Consultants, P.A. 303 S. TOPEKA • WICHITA, KANSAS 67202 316-262-2691 • FAX 316-262-3003			
Designed by	BMM	Job No.	35-08160-000
Drawn by	BJS, TAT	Date	March 2008
			Sheet 16 of 29