

STATE	PROJECT NO.	YEAR	SHEET NO.	TOTAL SHEETS
KANSAS	87 N-0357-01	2008	1	185

INDEX OF SHEETS

SHEET NO	DESCRIPTION
1	TITLE SHEET
2	GENERAL NOTES
3-7	TYPICAL SECTIONS
8-35	PLAN & PROFILE SHEETS
36-40	PAVING BUBBLE MAPS
41-45	STORM SEWER BUBBLE MAPS
46-57	PAVING DETAILS
58-70	INLET AND MANHOLE DETAILS
71	STORM SEWER OUTFALL DETAILS
72	RETAINING WALL DETAILS
73	MISCELLANEOUS DETAILS
74-81	RCB WIDENING DETAILS
82-96	WATER IMPROVEMENT PLANS
97-101	WATER BUBBLE MAPS
102-103	SANITARY SEWER IMPROVEMENT PLANS
104-105	SUMMARY OF QUANTITIES
106-112	BMP
113-116	ROADSIDE IMPROVEMENT PLANS
117-123	SIGNAL PLANS & DETAILS
124-131	PAVEMENT MARKING & SIGNING
132	CONSTRUCTION SEQUENCING
133-145	TRAFFIC CONTROL PLANS
146	DRAINAGE MAP
147-185	CROSS SECTIONS

STATE OF KANSAS
DEPARTMENT OF TRANSPORTATION



PLAN AND PROFILE OF PROPOSED
OLIVER STREET FROM HARRY TO KELLOGG

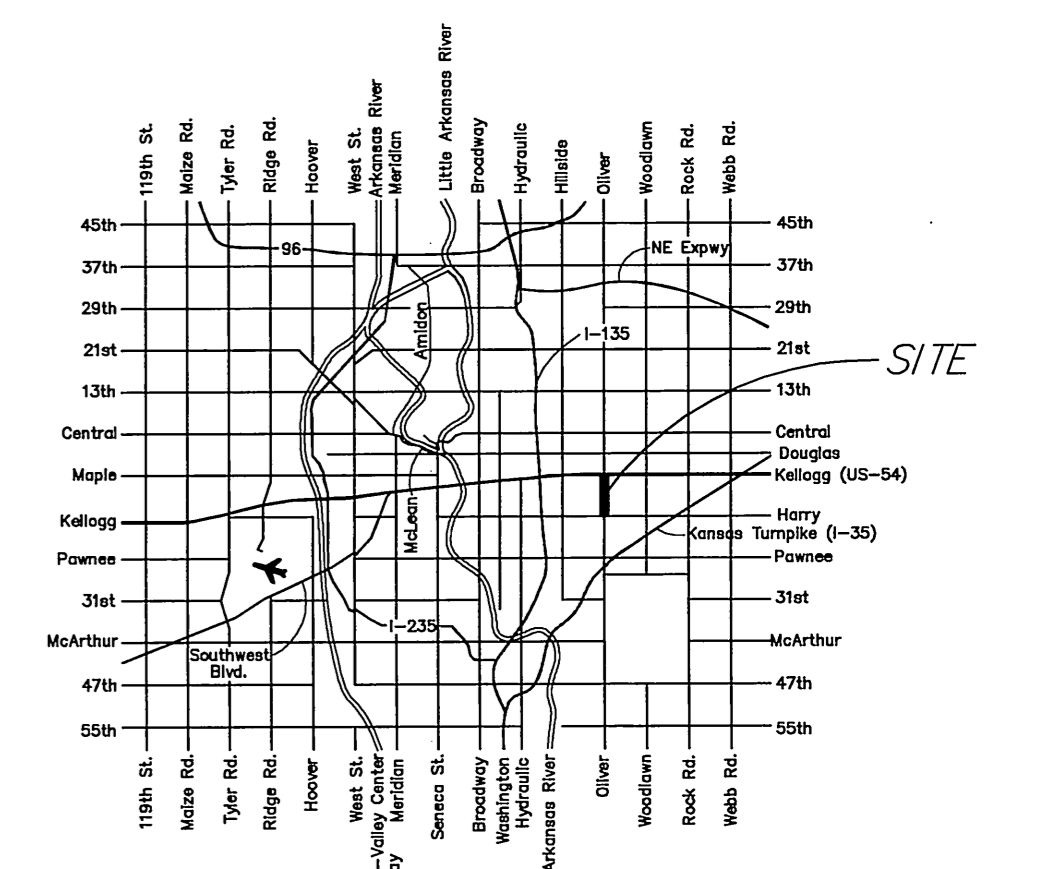
FEDERAL AID PROJECT

WICHITA, SEDGWICK COUNTY, KANSAS
POPULATION = 335,562

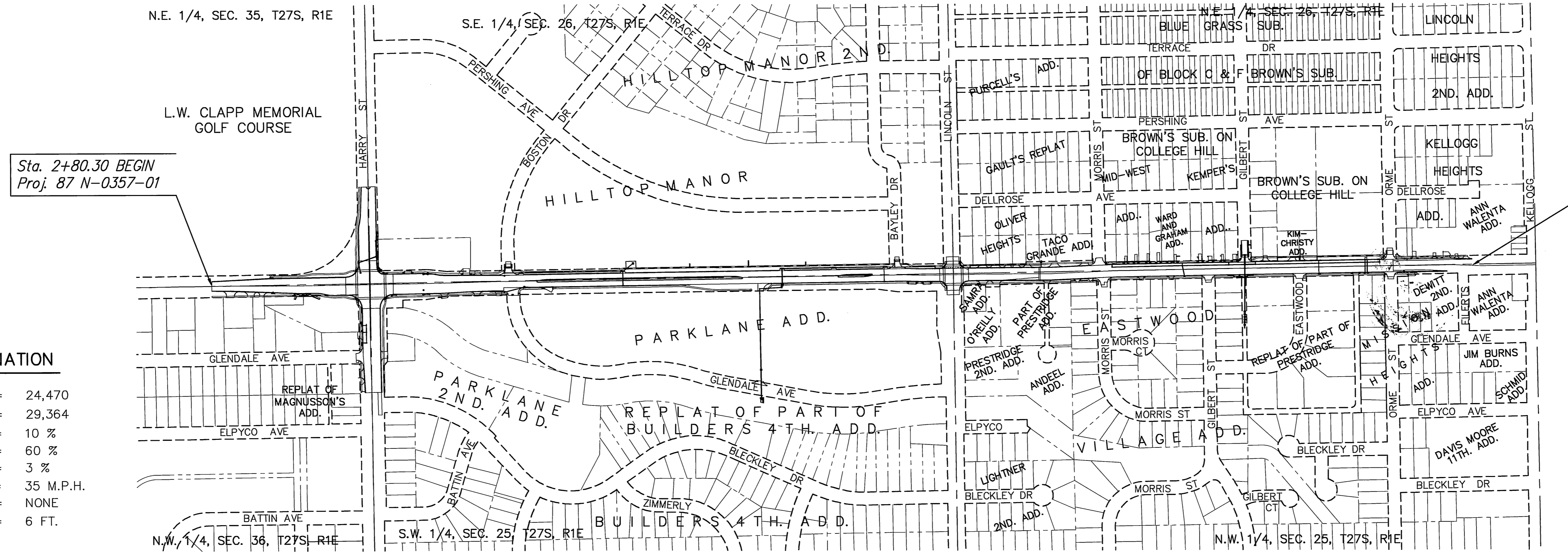
CITY OF WICHITA PAVING PROJECT NO. 472-84749 (OCA#706993)
CITY OF WICHITA SANITARY SEWER PROJECT NO. 468-84538 (OCA#620520)
CITY OF WICHITA WATER PROJECT NO. 448-90086 (OCA#636207)

KDOT PROJ. NO. 87 N-0357-01
F.A. NO. STP N035 (701)
GRADING
SURFACING
STORM SEWER
SIGNALIZATION
PAVEMENT MARKING
SEEDING

DATE	3-15-04
BY	Marc/Justin MKEC
SURVEYED	DFG
CAD TECHNICIAN	JRA
DESIGNERS	KDOT
SQUAD	



SCALE: 1"=300'



DESIGN DESIGNATION

AADT (2002)	=	24,470
AADT (2030)	=	29,364
DHV	=	10 %
D	=	60 %
T	=	3 %
V	=	35 M.P.H.
Control of Access	=	NONE
Clear Zone	=	6 FT.

COUNTY LINE	---
CITY LIMITS	////
STATE OR NATIONAL LINE	----
TOWNSHIP, SECTION or GRANT LINE	----
PROPERTY LINE	---
HIGHWAY FENCE	----
EXISTING FENCE	----
GUARD FENCE	----
CONSTRUCTION LIMITS	----
RIGHT OF WAY LINE	----
TRAVELED WAY	----
RAILROADS	----

CENTER LINE OF PROJECT	50 1+00
TERRACE	----
CULVERTS	----
DROP INLET & STORM SEWER	----
ACCESS CONTROL	----
POWER POLE	----
TELEPHONE POLE	----
MARSH	----
HEDGE	----
TREES	----
PROFILE ELEVATION	----
STREAM or CREEK	----

GROSS LENGTH OF PROJECT	3,052.49 FT.
EXCEPTIONS	0.00 FT.
ADDITIONS	0.00 FT.
NET LENGTH OF PROJECT	3,052.49 FT.
NET LENGTH OF BRIDGES	0.00 FT.
NET LENGTH OF ROAD	3,052.49 FT.

Sta. 60+08.64 END
Proj. 87 N-0357-01

Sta. 2+80.30 BEGIN
Proj. 87 N-0357-01

NOTE:
TWO WAY TRAFFIC TO BE CARRIED THROUGH CONSTRUCTION. LOCAL TRAFFIC WILL BE PERMITTED TO ADJACENT PROPERTIES.



PREPARED & SUBMITTED BY
MKEC ENGINEERING CONSULTANTS, INC.
WICHITA, KANSAS

APPROVED - DATE
SEPT 12, 2008
Jim Armour
JIM ARMOUR, P.E.
CITY ENGINEER
PROJECT NO. 87 N-0307-01

RECOM. FOR APPROVAL-DATE
CHIEF, BUREAU OF LOCAL PROJECTS KANSAS DEPARTMENT OF TRANSPORTATION
APPROVED - DATE
STATE TRANSPORTATION ENGINEER KANSAS DEPARTMENT OF TRANSPORTATION