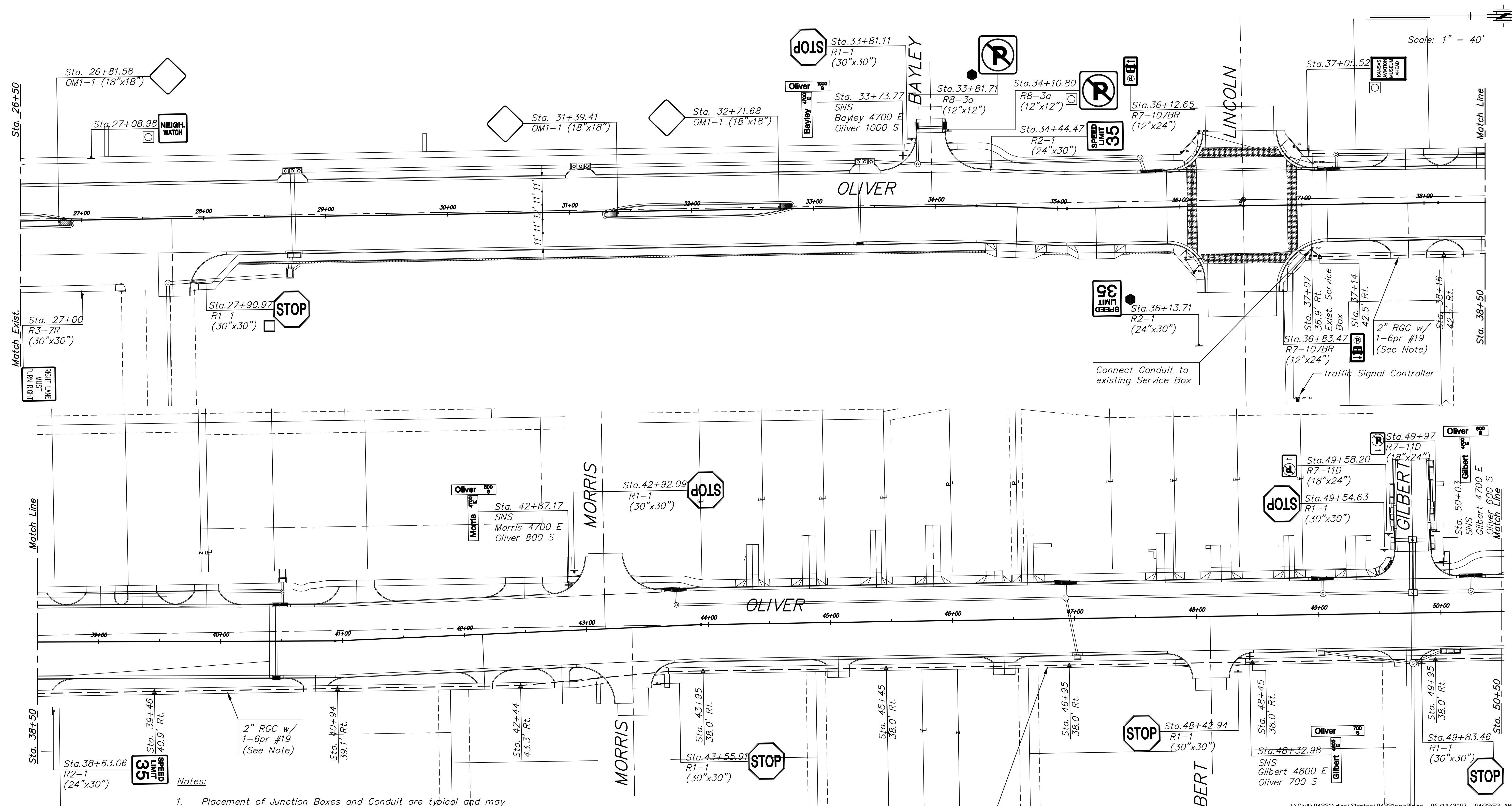


STATE	PROJECT NO.	YEAR	SHEET NO.	SHEETS
KANSAS	87N-0357-01	2008	128	185

DATE	
BY	
REFERENCES NOTED	
REFERENCES CHECKED	



- Notes:
1. Placement of Junction Boxes and Conduit are typical and may be adjusted as directed by the Engineer to facilitate installation.
  2. Install 2" RGC with a continuous run of 1-6pr #19 IMSA 20-2, 600V Shielded Communication Cable as shown. Install Junction Box per standard detail at 150' maximum intervals. Alignment and location shall be approved by the Engineer.
  3. Junction Boxes may be placed underneath sidewalks. Ring and Covers shall be cast directly into Sidewalk Sections above the Junction Box. No adjustment in pay for "Junction Box" will be made for this work.
  4. See Sheet 118 for Quantities.

2" RGC w/  
1-6pr #19  
(See Note)

**LEGEND**

- Not in project
- ⊖ Remove and Replace
- ⊞ Remove and Deliver to Property Owner
- △ Junction Box
- - Rigid Galvanized Conduit (RGC)
- Existing Service Box

J:\Civil\04221\dwg\Signing\04221sgn2.dwg 06/14/2007 04:32:53 AM CST

KANSAS DEPARTMENT OF TRANSPORTATION

**OLIVER IMPROVEMENTS  
SIGNING PLAN**

PROJECT NO. 87N-0135-01 SEDGWICK CO.

M K E C ENGINEERING CONSULTANTS, INC.  
WICHITA, KANSAS

DESIGNED BY:	CHECKED BY:
DRAWN BY:	DATE: DEC 05

SHEET 128 OF 185