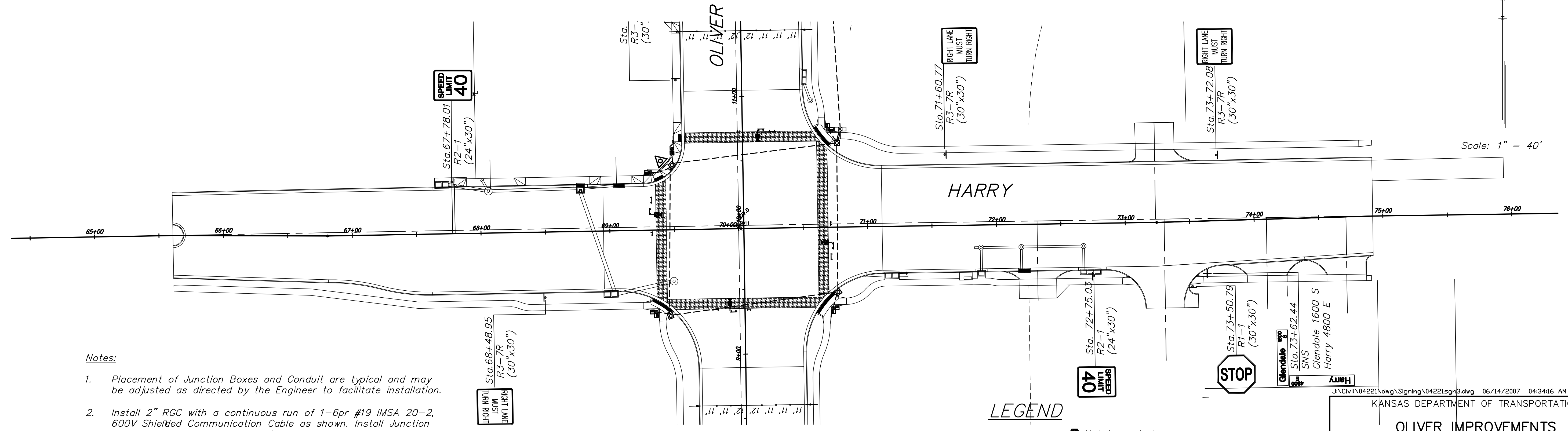
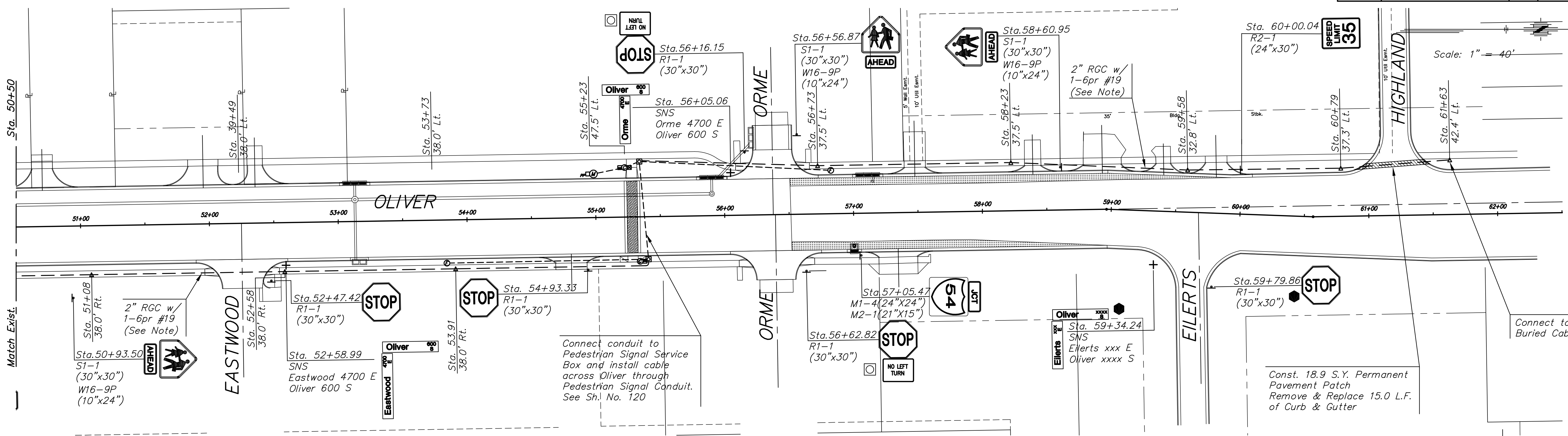


BY	DATE
REFERENCES NOTED	
REFERENCES CHECKED	



- Notes:
1. Placement of Junction Boxes and Conduit are typical and may be adjusted as directed by the Engineer to facilitate installation.
 2. Install 2" RGC with a continuous run of 1-6pr #19 IMA 20-2, 600V Shielded Communication Cable as shown. Install Junction Box per standard detail at 150' maximum intervals. Alignment and location shall be approved by the Engineer.
 3. Junction Boxes may be placed underneath sidewalks. Ring and Covers shall be cast directly into Sidewalk Sections above the Junction Box. No adjustment in pay for "Junction Box" will be made for this work.
 4. See Sheet 118 for Quantities.

LEGEND

	Sidewalk Remove & Replace		Not in project
	Permanent Pavement Patch		Remove and Replace
			Remove and Deliver to Property Owner
			Junction Box
			Rigid Galvanized Conduit (RGC)
			Existing Service Box

J:\Civil\04221\dwg\Signing\04221sgr3.dwg 06/14/2007 04:34:16 AM CST

KANSAS DEPARTMENT OF TRANSPORTATION

**OLIVER IMPROVEMENTS
SIGNING PLAN**

PROJECT NO. 87N-0135-01 SEDGWICK CO.

M K E C ENGINEERING CONSULTANTS, INC.
WICHITA, KANSAS

DESIGNED BY:	CHECKED BY:
DRAWN BY:	DATE: DEC 05

SHEET 129 OF 185