

STATE	PROJECT NO.	YEAR	SHEET NO.	TOTAL SHEETS
KANSAS	87 N-0357-01	2008	14	185

Sta. 21+50.00, 28.00' Lt. Oliver,
Const. Curb Inlet (Type IA, Special)
L=16'-4", W=5'-4", H=5'-0"
Inlet Top=149.16
Install 24" x 238.0' Storm Swr. (RCP)(S)
FI In=146.12 (15" RCP-NW)
FI In=145.26 (18" RCP-E)
FI Out=145.16 (24" RCP-S)
See Sh. No. 61

Sta. 21+96.93, 72.24' Lt. Oliver,
Const. Double Drop Inlet
L=4'-0", W=2'-0", H=3'-6"
Inlet Top=149.67
Install 15" x 51.7' Storm Swr. (RCP)(SE)
Connect to Structure No. 21
FI Out=146.92 (15" RCP-SE)
Grade Area around Inlet to Drain
See Sh. No. 67

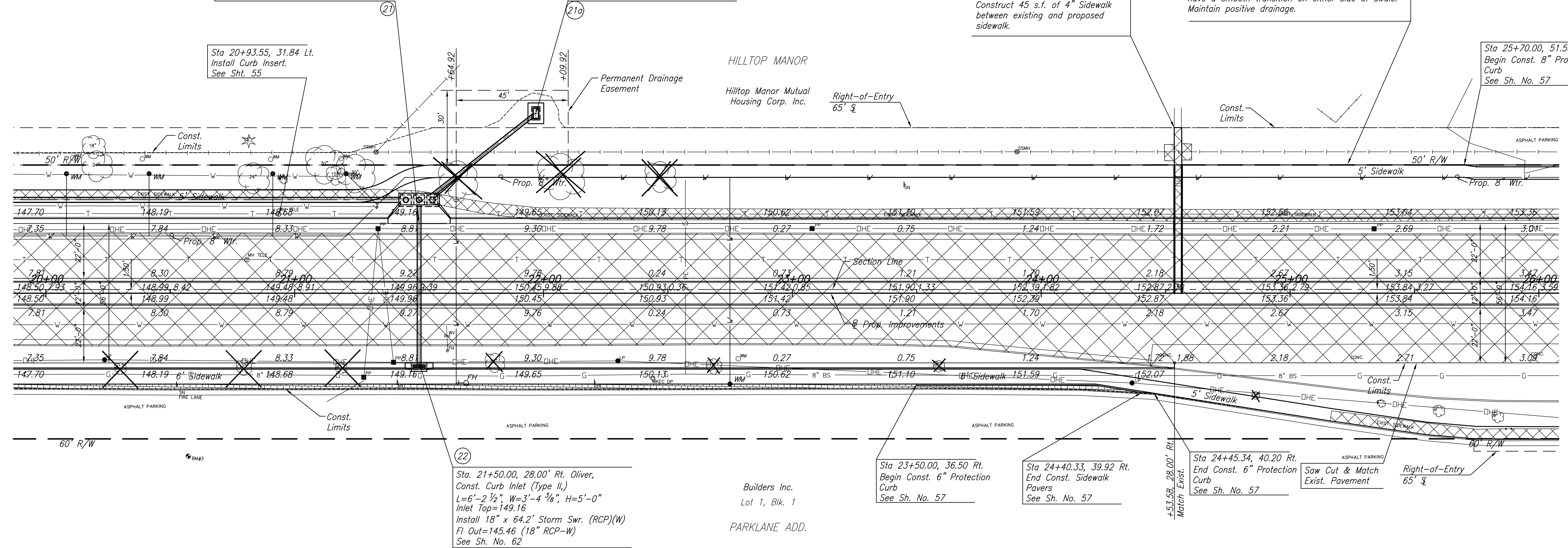
Sta 20+93.55, 31.84 Lt.
Install Curb Insert.
See Sht. 55

Sta. 24+53.52 Lt. to 24+63.52 Lt.
Construct 45 s.f. of 4" Sidewalk
between existing and proposed
sidewalk.

Sidewalk grade shall confirm to the existing ground
grade across the drainage swale. Sidewalk shall
have a smooth transition on either side of swale.
Maintain positive drainage.

Sta 25+70.00, 51.50 Lt.
Begin Const. 8" Protection
Curb
See Sh. No. 57

Scale: 1"=20'



BM#3 Sq. cut at S.W. corner sidewalk at S.W. corner Parklane Shopping Center building
Sta. 20+57.23, 65.45' Rt. Elev. 148.82

- LEGEND**
- Remove Tree
 - Pavement Removal
 - 2" Pavement Milling & Overlay
 - Pavement Widening
 - Construct Wheelchair Ramp
See Sht. No. 56

J:\Civil\04221\dwg\pav\04221_e04.dwg 11/17/2006 2:17:11 PM CST
KANSAS DEPARTMENT OF TRANSPORTATION
OLIVER IMPROVEMENTS
STA. 20+00 TO STA. 26+00
PROJECT NO. 87 N-0357-01 SEDGWICK CO.
M K E C ENGINEERING CONSULTANTS, INC.
WICHITA, KANSAS

DESIGNED BY: LAC	CHECKED BY: JRA
DRAWN BY: WNJ	DATE: 4/07/05

SHEET 14 OF 185