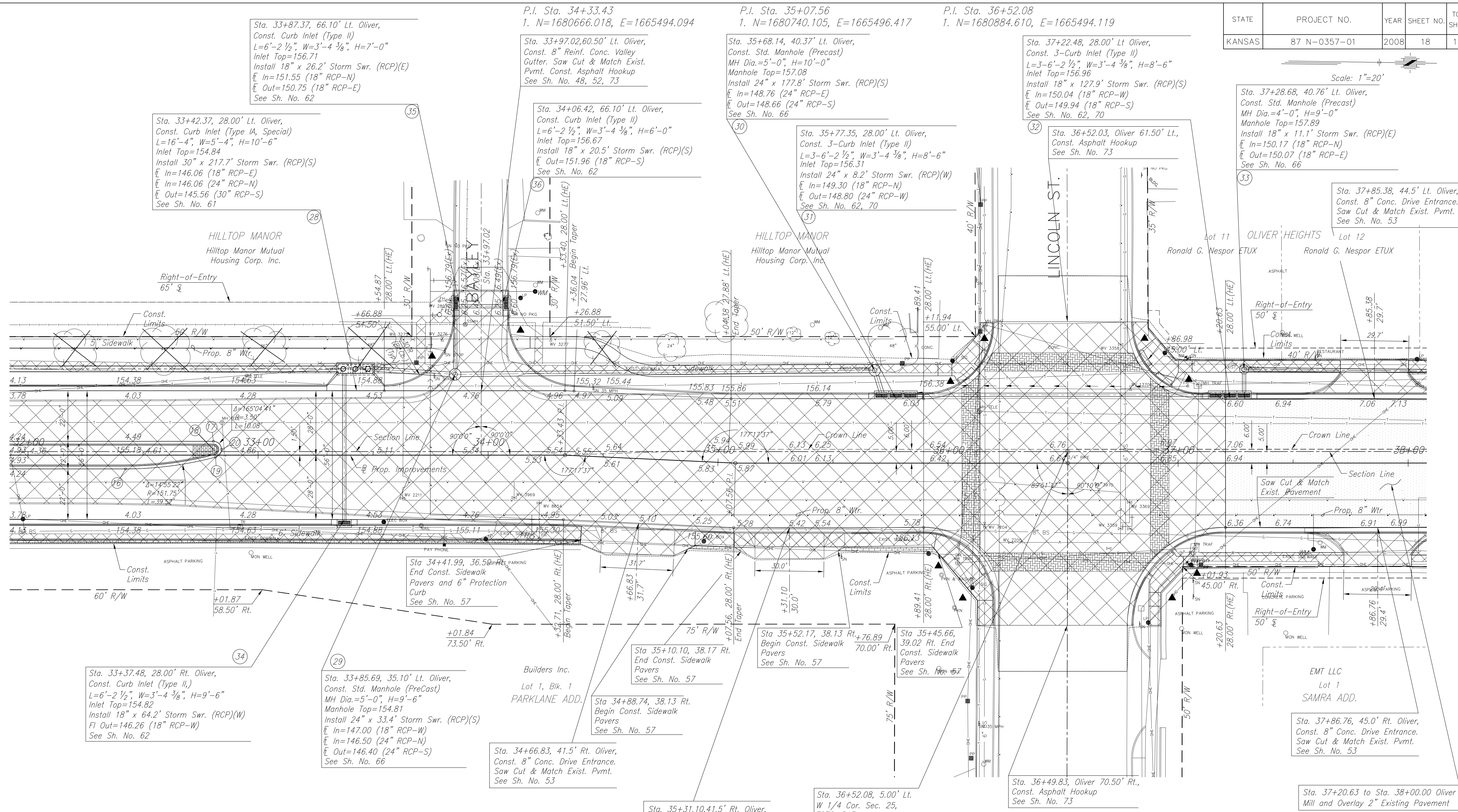


STATE	PROJECT NO.	YEAR	SHEET NO.	TOTAL SHEETS
KANSAS	87 N-0357-01	2008	18	185

Scale: 1"=20'



Sta. 33+87.37, 66.10' Lt. Oliver,
Const. Curb Inlet (Type II)
L=6'-2 1/2", W=3'-4 3/8", H=7'-0"
Inlet Top=156.71
Install 18" x 26.2' Storm Swr. (RCP)(E)
In=151.55 (18" RCP-N)
Out=150.75 (18" RCP-E)
See Sh. No. 62

P.I. Sta. 34+33.43
1. N=1680666.018, E=1665494.094

Sta. 33+97.02, 60.50' Lt. Oliver,
Const. 8" Reinf. Conc. Valley
Gutter. Saw Cut & Match Exist.
Pvmt. Const. Asphalt Hookup
See Sh. No. 48, 52, 73

P.I. Sta. 35+07.56
1. N=1680740.105, E=1665496.417

Sta. 35+68.14, 40.37' Lt. Oliver,
Const. Std. Manhole (Precast)
MH Dia.=5'-0", H=10'-0"
Manhole Top=157.08
Install 24" x 177.8' Storm Swr. (RCP)(S)
In=148.76 (24" RCP-E)
Out=148.66 (24" RCP-S)
See Sh. No. 66

P.I. Sta. 36+52.08
1. N=1680884.610, E=1665494.119

Sta. 37+22.48, 28.00' Lt. Oliver,
Const. 3-Curb Inlet (Type II)
L=3'-6'-2 1/2", W=3'-4 3/8", H=8'-6"
Inlet Top=156.96
Install 18" x 127.9' Storm Swr. (RCP)(S)
In=150.04 (18" RCP-W)
Out=149.94 (18" RCP-S)
See Sh. No. 62, 70

Sta. 37+28.68, 40.76' Lt. Oliver,
Const. Std. Manhole (Precast)
MH Dia.=4'-0", H=9'-0"
Manhole Top=157.89
Install 18" x 11.1' Storm Swr. (RCP)(E)
In=150.17 (18" RCP-N)
Out=150.07 (18" RCP-E)
See Sh. No. 66

Sta. 37+85.38, 44.5' Lt. Oliver,
Const. 8" Conc. Drive Entrance.
Saw Cut & Match Exist. Pvmt.
See Sh. No. 53

Sta. 33+37.48, 28.00' Rt. Oliver,
Const. Curb Inlet (Type II)
L=6'-2 1/2", W=3'-4 3/8", H=9'-6"
Inlet Top=154.82
Install 18" x 64.2' Storm Swr. (RCP)(W)
In=146.26 (18" RCP-W)
See Sh. No. 62

Sta. 33+85.69, 35.10' Lt. Oliver,
Const. Std. Manhole (PreCast)
MH Dia.=5'-0", H=9'-6"
Manhole Top=154.81
Install 24" x 33.4' Storm Swr. (RCP)(S)
In=147.00 (18" RCP-W)
Out=146.50 (24" RCP-N)
See Sh. No. 66

Sta. 34+66.83, 41.5' Rt. Oliver,
Const. 8" Conc. Drive Entrance.
Saw Cut & Match Exist. Pvmt.
See Sh. No. 53

Sta. 35+31.10, 41.5' Rt. Oliver,
Const. 8" Conc. Drive Entrance.
Saw Cut & Match Exist. Pvmt.
See Sh. No. 53

Sta. 36+52.08, 5.00' Lt.
W 1/4 Cor. Sec. 25,
T27S, R1E

Sta. 36+49.83, Oliver 70.50' Rt.,
Const. Asphalt Hookup
See Sh. No. 73

Sta. 37+86.76, 45.0' Rt. Oliver,
Const. 8" Conc. Drive Entrance.
Saw Cut & Match Exist. Pvmt.
See Sh. No. 53

Sta. 37+20.63 to Sta. 38+00.00 Oliver
Mill and Overlay 2" Existing Pavement

Point No.	Station	Offset	Elevation	
			High Edge	Top Curb
16	32+42.44	6.00' Rt.	154.45	155.14
17	32+80.62	6.00' Lt.	154.64	154.80
18	32+80.62	2.50' Lt.	Radius Point	
19	32+81.52	0.88' Rt.	154.74	154.90
20	32+84.12	2.50' Lt.	154.73	155.42

- W 1/4 Cor. Sec. 25, T27S, R1E
Sta. 36+52.08, 5.00' Lt.
- 1/2" Iron in Thimble
 - Nail in cap in asphalt parking
 - Cross in Concrete Driveway
 - Nail in Cap in Asphalt Parking
 - N=1680884.530, E=1665489.120

121.68' NE
98.41' SW
111.78' NW

BM#1 "O" cut COW disc at NE corner
Lincoln & Oliver on traffic sign base
Sta. 37+04.35, 43.57' Rt. Elev. 156.60

- LEGEND**
- Remove Tree
 - Pavement Removal
 - 2" Pavement Milling & Overlay
 - Pavement Widening
 - Construct Wheelchair Ramp See Sht. No. 56

J:\Civil\04221\dwg\pav\04221_e06.dwg 9/26/2007 10:54:54 AM CDT

KANSAS DEPARTMENT OF TRANSPORTATION

OLIVER IMPROVEMENTS
STA. 32+00 TO STA. 38+00

PROJECT NO. 87 N-0357-01 SEDGWICK CO.

M K E C ENGINEERING CONSULTANTS, INC.
WICHITA, KANSAS

DESIGNED BY: LAC	CHECKED BY: JRA
DRAWN BY: WNJ	DATE: 4/07/05

SHEET 18 OF 185