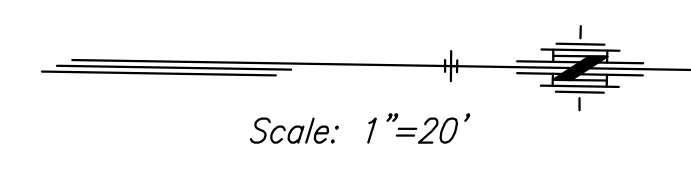
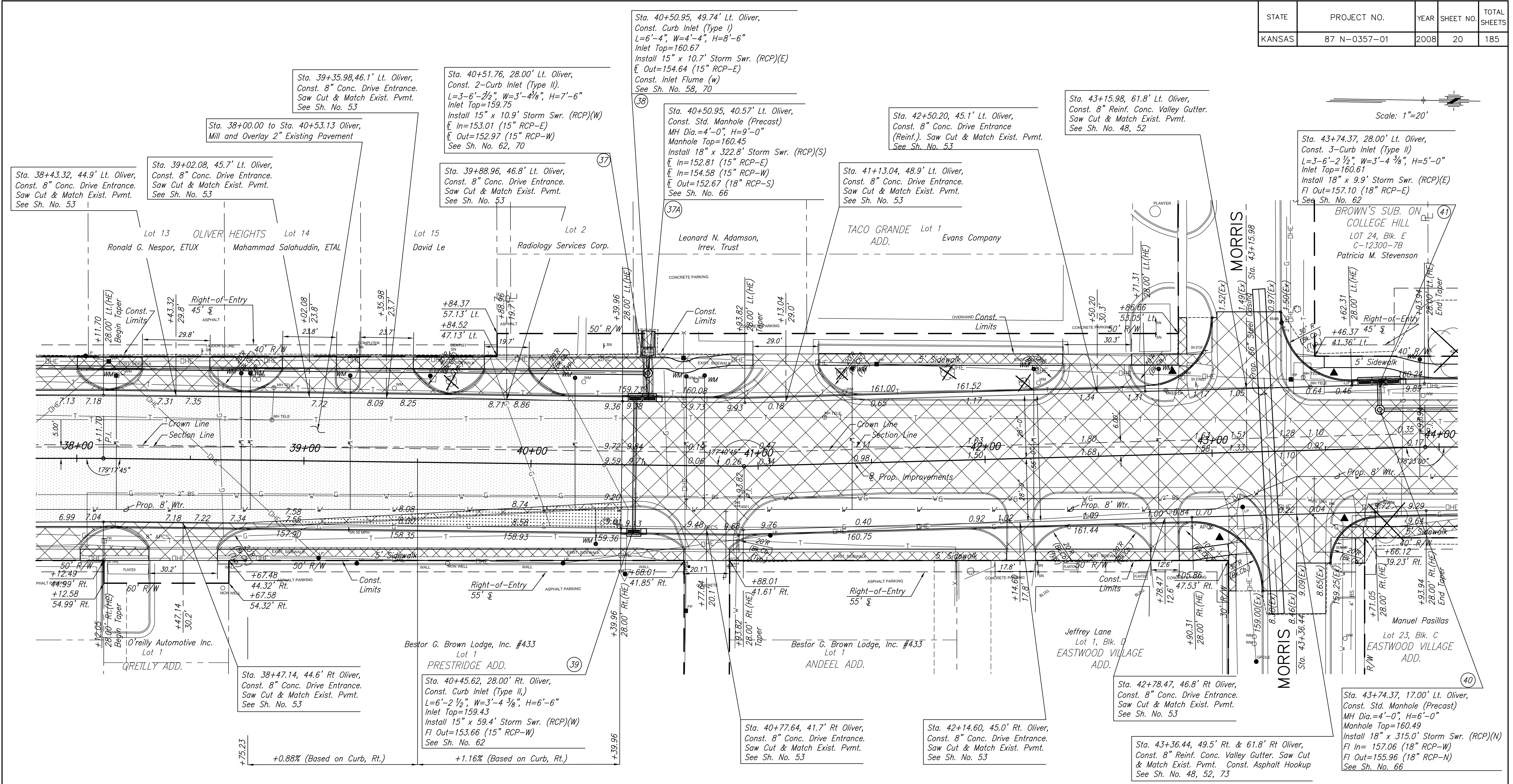


STATE	PROJECT NO.	YEAR	SHEET NO.	TOTAL SHEETS
KANSAS	87 N-0357-01	2008	20	185



LEGEND

- Remove Tree
- Pavement Removal
- 2" Pavement Milling & Overlay
- Pavement Widening
- Construct Wheelchair Ramp See Sht. No. 56

BM#6 Sq. cut top of curb 18± W. of NW return, N. side of Morris, West of Oliver Sta. 43+32.23, 56.59' Lt. Elev. 161.44

J:\Civil\04221\dwg\pav\04221_e07.dwg 11/20/2006 9:05:46 AM CST
 KANSAS DEPARTMENT OF TRANSPORTATION
OLIVER IMPROVEMENTS
 STA. 38+00 TO STA. 44+00
 PROJECT NO. 87 N-0357-01 SEDGWICK CO.
M K E C ENGINEERING CONSULTANTS, INC.
 WICHITA, KANSAS

DESIGNED BY: LAC	CHECKED BY: JRA
DRAWN BY: WNJ	DATE: 4/07/05 SHEET 20 OF 185