

P.O.T. Sta. 76+00.00
 1. N=1678241.727, E=1666131.215

STATE	PROJECT NO.	YEAR	SHEET NO.	TOTAL SHEETS
KANSAS	87 N-0357-01	2008	30	185

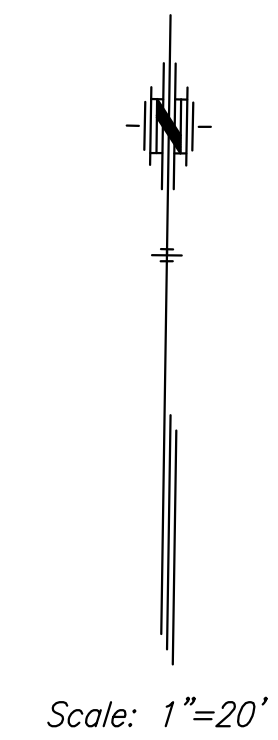
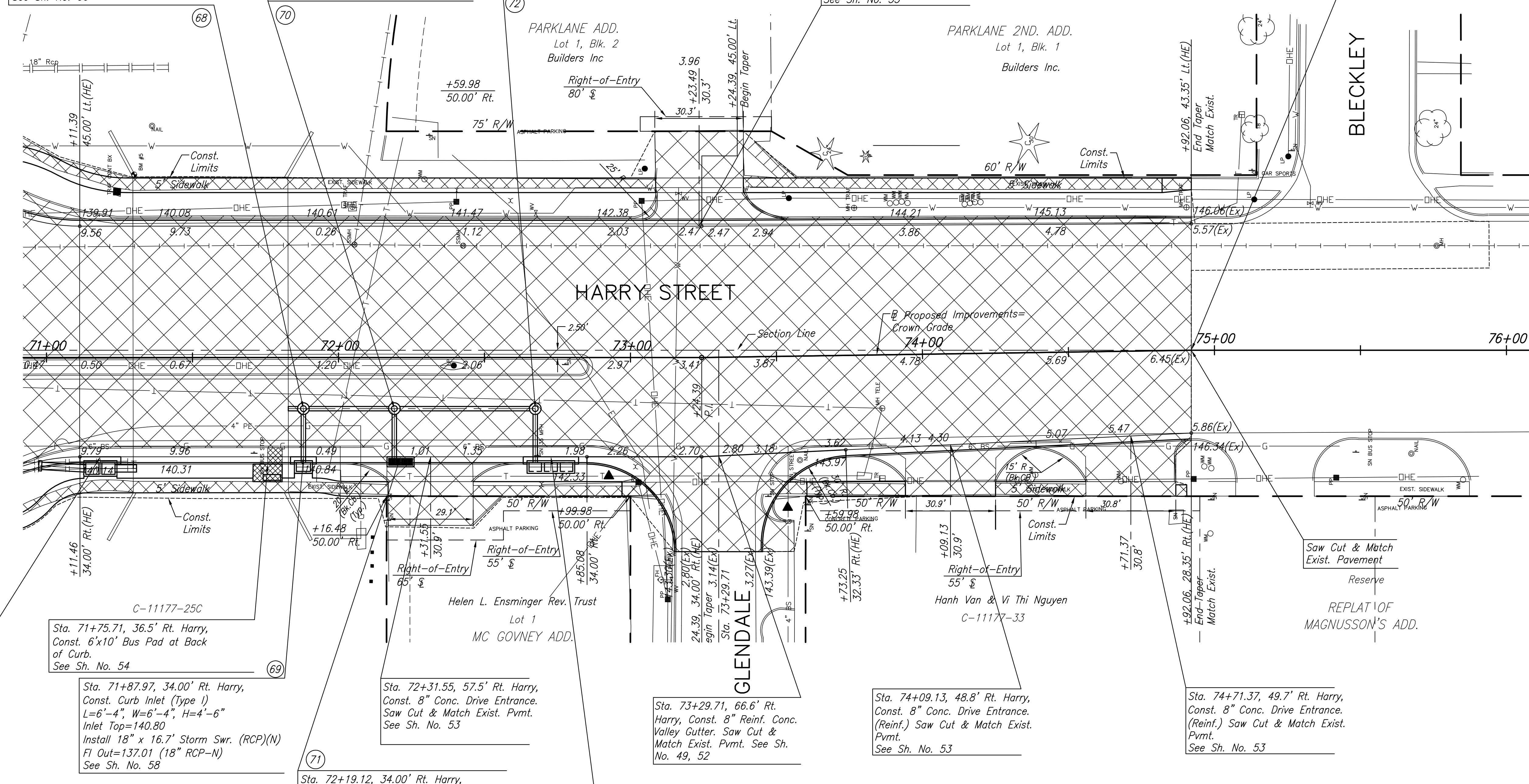
Sta. 71+87.97, 17.50' Rt. Harry,
 Const. Std. Manhole (Precast)
 MH Dia.=4'-0", H=7'-6"
 Manhole Top=140.68
 Install 18" x 4.0' Storm Swr. (RCP)(W)
 Connect to Exist. RCB @
 FI Out=134.79 (18" RCP-W)
 FI In= 134.96 (18" RCP-S)
 FI In=134.86 (18" RCP-E)
 FI Out=134.86 (18" RCP-W)
 See Sh. No. 66

Sta. 72+19.12, 17.50' Rt. Harry,
 Const. Std. Manhole (Precast)
 MH Dia.=4'-0", H=5'-0"
 Manhole Top=141.14
 Install 18" x 27.5' Storm Swr. (RCP)(W)
 FI In= 137.49 (18" RCP-S)
 FI In=137.39 (18" RCP-E)
 FI Out=137.39 (18" RCP-W)
 See Sh. No. 66

Sta. 72+67.38, 17.50' Rt. Harry,
 Const. Std. Manhole (Precast)
 MH Dia.=4'-0", H=5'-6"
 Manhole Top=142.01
 Install 18" x 44.6' Storm Swr. (RCP)(W)
 FI In= 138.25 (18" RCP-S)
 FI Out=138.15 (18" RCP-W)
 See Sh. No. 66

Sta. 73+23.49, 77.5' Lt. Harry,
 Const. 8" Conc. Drive Entrance.
 (Reinf.) Saw Cut & Match Exist.
 Pvmt.
 See Sh. No. 53

Sta. 74+92.06 Harry, End
 Construction



Sta. 71+18.46, 34.00' Rt. Harry, Const.
 Curb Inlet (Type I)
 L=11'-4", W=5'-4", H=9'-0"
 Inlet Top=140.14
 Install 30" x 15.7' Storm Swr. (RCP)(W)
 Connect to Exist. 30" RCP with Concrete Collar
 FI=132.54 (Exist. 30" RCP-W)
 Install 30" x 7.4' Storm Swr. (RCP)(E)
 FI In=132.34 (30" RCP-W)
 FI Out=132.24 (30" RCP-E)
 Connect to Exist. RCB
 FI Out=132.15 (30" RCP-E)
 Remove 20.0' of Exist. 30" RCP-E & Plug (W)
 See Sh. No. 59

Sta. 71+75.71, 36.5' Rt. Harry,
 Const. 6'x10' Bus Pad at Back
 of Curb.
 See Sh. No. 54

Sta. 71+87.97, 34.00' Rt. Harry,
 Const. Curb Inlet (Type I)
 L=6'-4", W=6'-4", H=4'-6"
 Inlet Top=140.80
 Install 18" x 16.7' Storm Swr. (RCP)(N)
 FI Out=137.01 (18" RCP-N)
 See Sh. No. 58

Sta. 72+19.12, 34.00' Rt. Harry,
 Const. Driveway Grated Inlet (Double)
 Inlet Grate L=140.76, H=4'-0"
 Install 18" x 15.4' Storm Swr. (RCP)(N)
 FI Out=137.54 (18" RCP-N)
 See Sh. No. 64

Sta. 72+31.55, 57.5' Rt. Harry,
 Const. 8" Conc. Drive Entrance.
 Saw Cut & Match Exist. Pvmt.
 See Sh. No. 53

Sta. 72+67.38, 34.00' Rt. Harry,
 Const. Curb Inlet (Type I)
 L=16'-4", W=4'-4", H=4'-6"
 Inlet Top=142.02
 Install 18" x 16.7' Storm Swr. (RCP)(N)
 FI Out=138.30 (18" RCP-N)
 See Sh. No. 60

Sta. 73+29.71, 66.6' Rt.
 Harry, Const. 8" Reinf. Conc.
 Valley Gutter. Saw Cut &
 Match Exist. Pvmt. See Sh.
 No. 49, 52

Sta. 74+09.13, 48.8' Rt. Harry,
 Const. 8" Conc. Drive Entrance.
 (Reinf.) Saw Cut & Match Exist.
 Pvmt.
 See Sh. No. 53

Sta. 74+71.37, 49.7' Rt. Harry,
 Const. 8" Conc. Drive Entrance.
 (Reinf.) Saw Cut & Match Exist.
 Pvmt.
 See Sh. No. 53

LEGEND

- Remove Tree
- Pavement Removal
- 2" Pavement Milling & Overlay
- Pavement Widening
- Construct Wheelchair Ramp See Sht. No. 56

J:\Civil\04221\dwg\pav\04221_e12.dwg 11/20/2006 3:25:05 PM CST
 KANSAS DEPARTMENT OF TRANSPORTATION
OLIVER IMPROVEMENTS
 STA. 71+00 TO STA. 76+00
 PROJECT NO. 87 N-0357-01 SEDGWICK CO
M K E C ENGINEERING CONSULTANTS, INC.
 WICHITA, KANSAS

DESIGNED BY: LAC	CHECKED BY: JRA
DRAWN BY: WNJ	DATE: 4/07/05

SHEET 30 OF 185