

**BROWN'S SUBDIVISION
ON COLLEGE HILL**

(D)

LOT 9

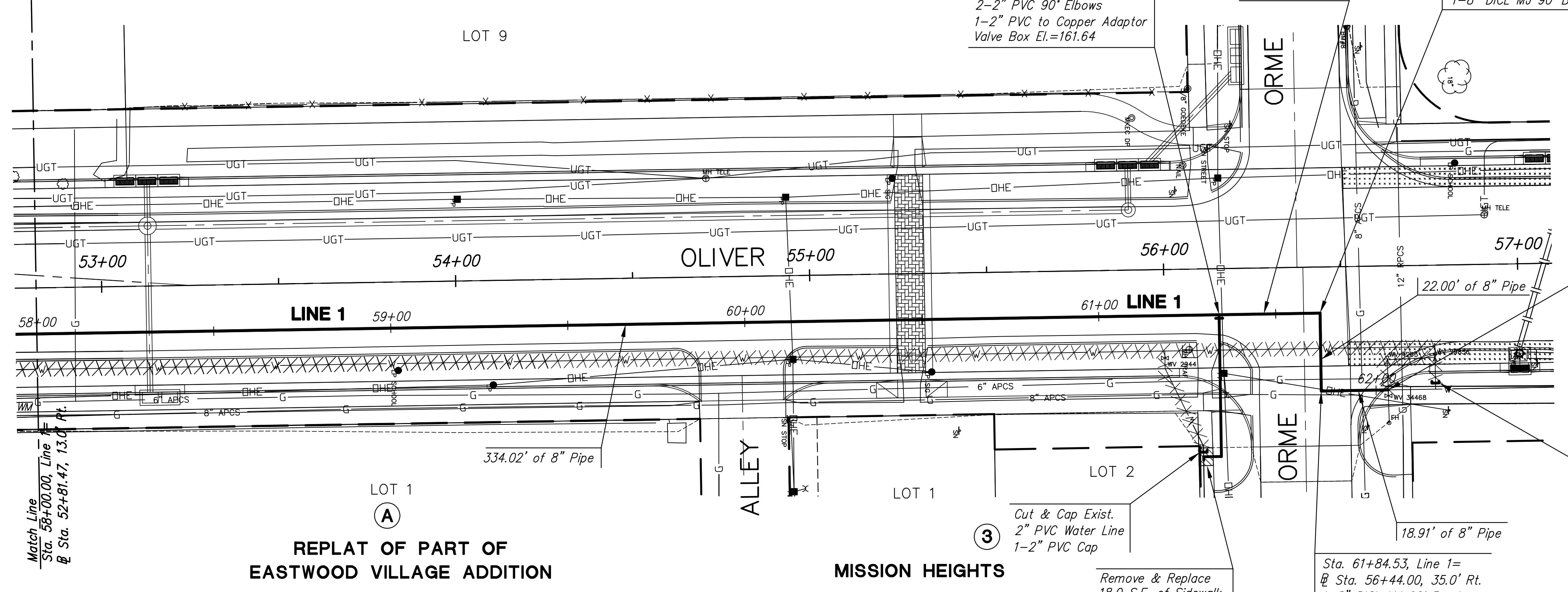
Sta. 61+34.02, Line 1=
@ Sta. 56+15.48, 13.0' Rt.
1-2" Service Outlet Assy.
46.00' of 2" PVC Pipe
2-2" PVC 90° Elbows
1-2" PVC to Copper Adaptor
Valve Box El.=161.64

Sta. 61+62.53, Line 1=
@ Sta. 56+44.00, 13.0' Rt.
1-8" DICL MJ 90° Bend

STATE	PROJECT NO.	YEAR	SHEET NO.	SHEETS
KANSAS	87 N-0357-01	2008	90	185

Scale: 1"=20'

Note:
Contractor to verify location and elevation of Existing 8" Water Line prior to construction.



**REPLAT OF PART OF
EASTWOOD VILLAGE ADDITION**

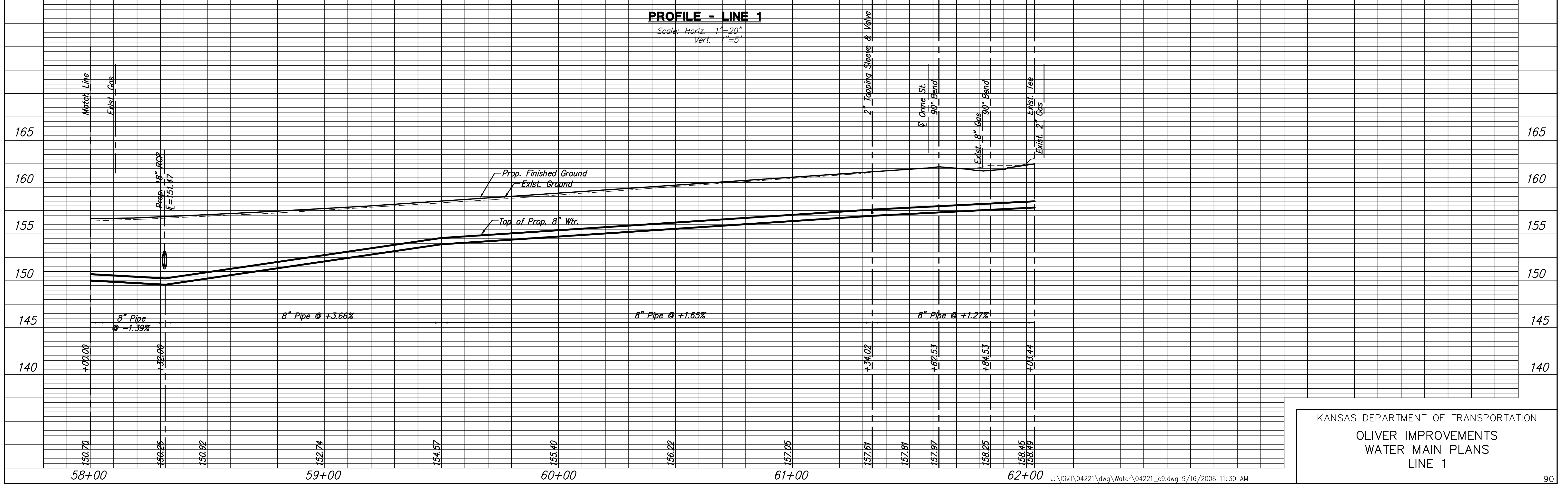
(A)

MISSION HEIGHTS

PLAN - LINE 1

PROFILE - LINE 1

Scale: Horiz. 1"=20"
Vert. 1"=5'



LEGEND

	Sidewalk Remove & Replace
	Permanent Pavement Patch
	Water Line to be Abandoned

KANSAS DEPARTMENT OF TRANSPORTATION
OLIVER IMPROVEMENTS
WATER MAIN PLANS
LINE 1