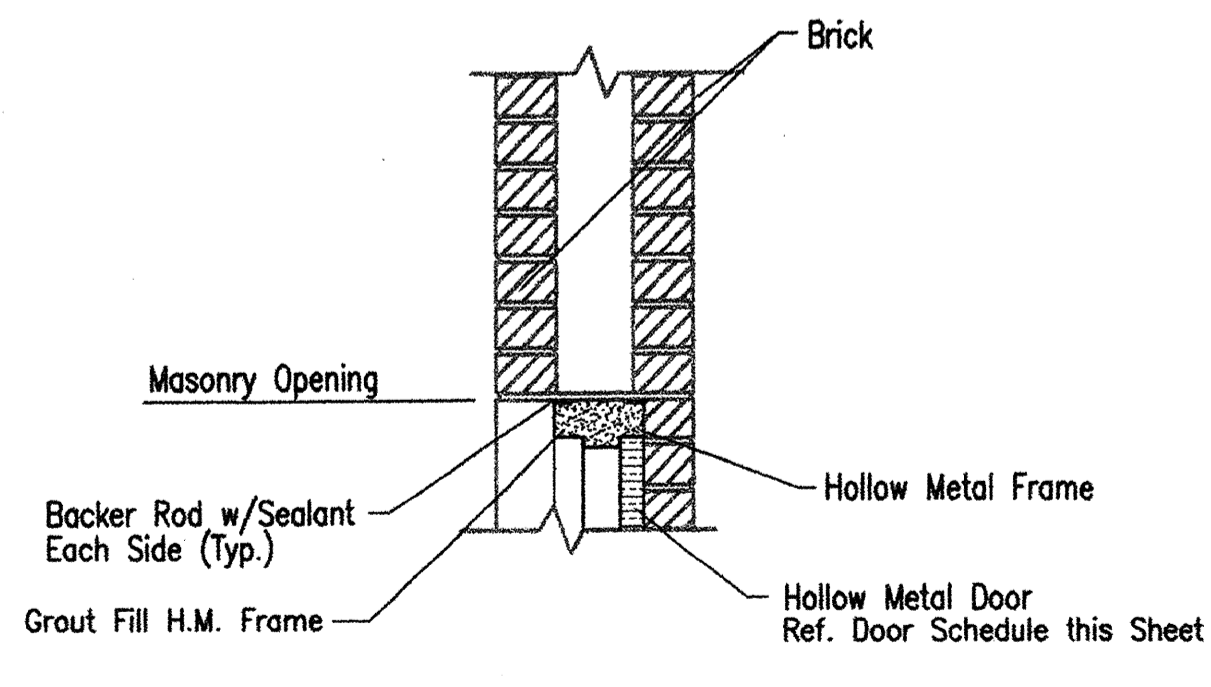


PLAN-OPERATING FLOOR
SCALE: 1/4" = 1'

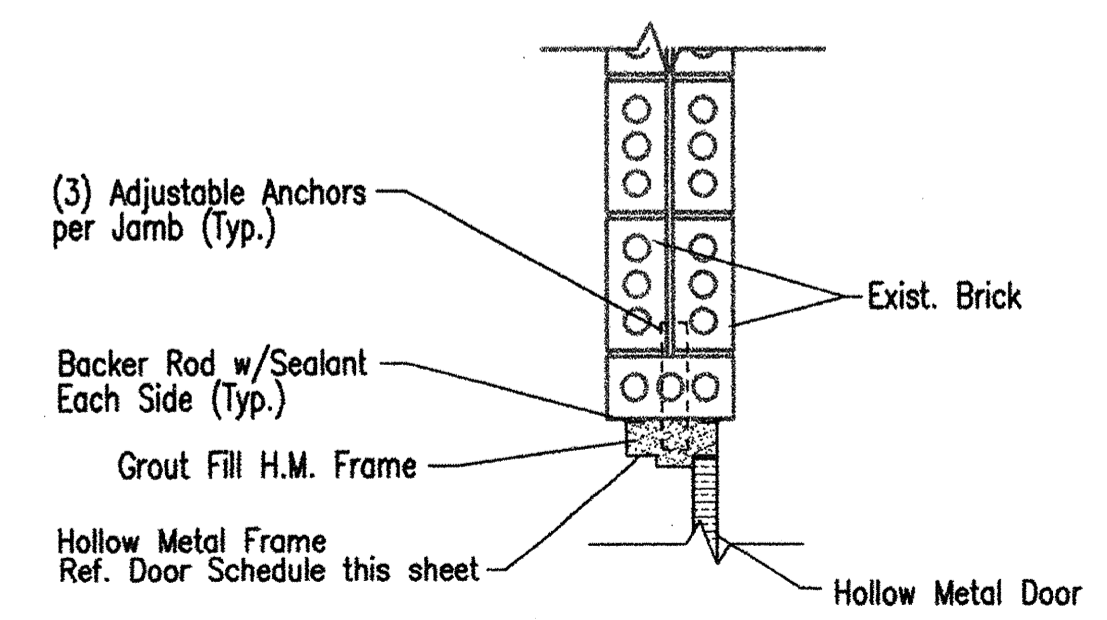
Door Size	Door Material	Finish	Frame Type	REMARKS
PR 3'-0" x 7'-2" (Field Verify)	HOLLOW METAL INSULATED	EPOXY	HOLLOW METAL	FINISH PER SPECIFICATION SECTION 09960, PART 2.7 COATING SYSTEM FOR GALVANIZED STEEL AND NONFERROUS METAL-INTERIOR OR EXTERIOR

DOOR HARDWARE (PAIR OF DOORS)			
6- HINGES	BUTTS FB8191 4 1/2 x 4 1/2 - NRP	STANLEY	
1- LOCKSET	1- LOCKSET	SCHLAGE LOCK	
1- BOLTS	1- BOLTS	GLYNN-JOHNSON CORP.	
1- DOOR CLOSER	411-H-CUSH-889xSR	LCH	
1- THRESHOLD	1714-72"	PEMKO	
1- DOOR BOTTOM	18052CP-72"	PEMKO	
1- ROLL GASKETING	S880-20"	PEMKO	
1- RAIN DRIP	346C-76"	PEMKO	

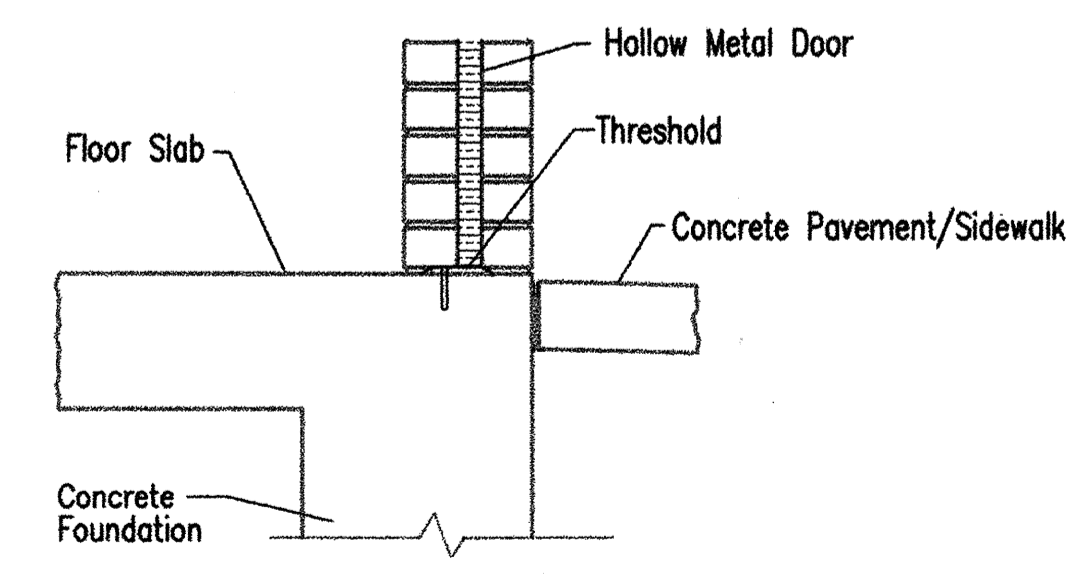
- Interior Building Repair Notes (Repairs shall be completed prior to installation of new equipment adjacent to wall.)
1. Remove efflorescence with dry brush.
 2. Remove hard water deposits with industrial strength solution. Application per manufacturer's instructions.
 3. Tuck and Point all masonry surfaces (approx. 1,244 S.F.)



1 HEAD
C3



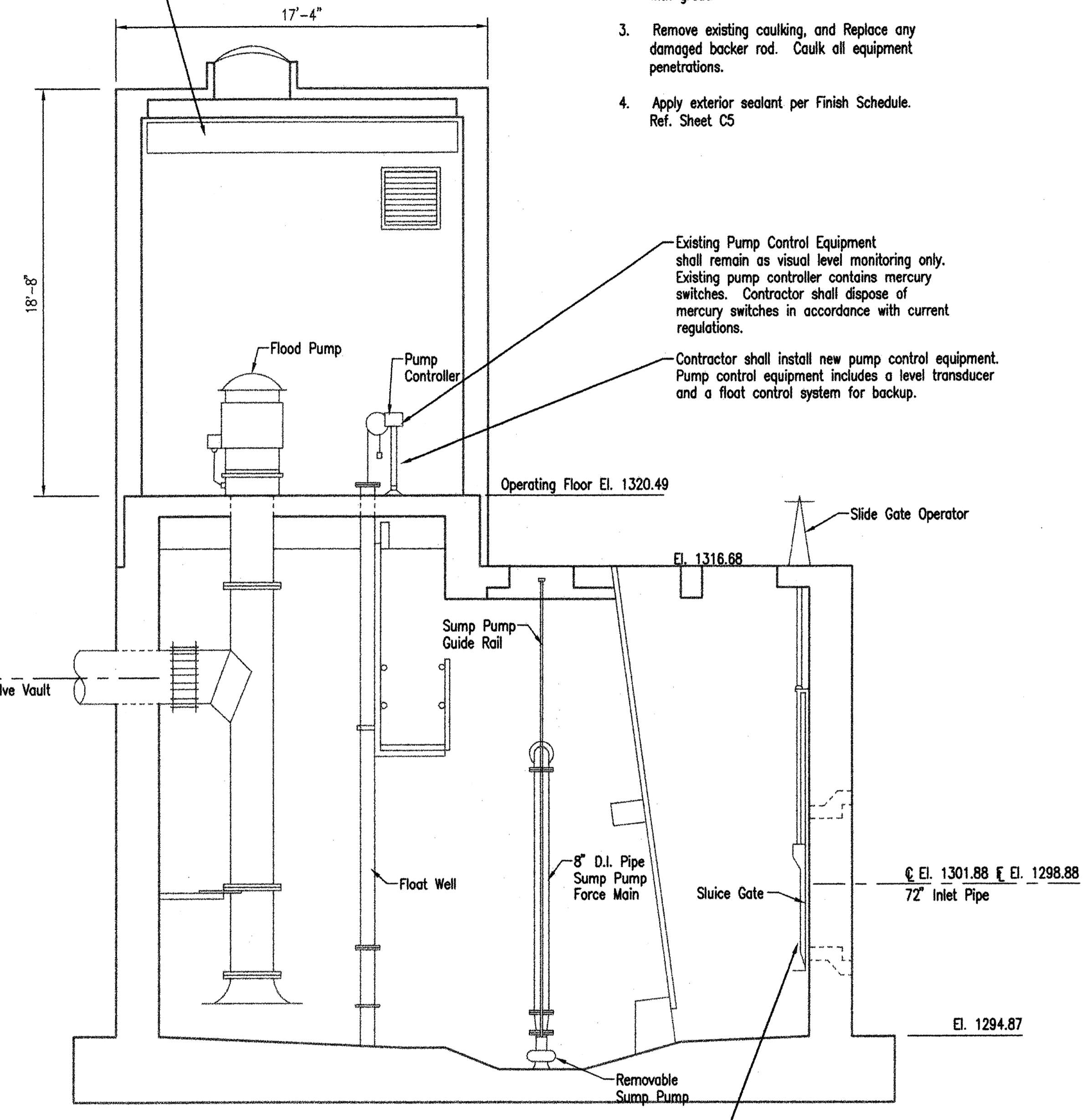
2 JAMB
C3



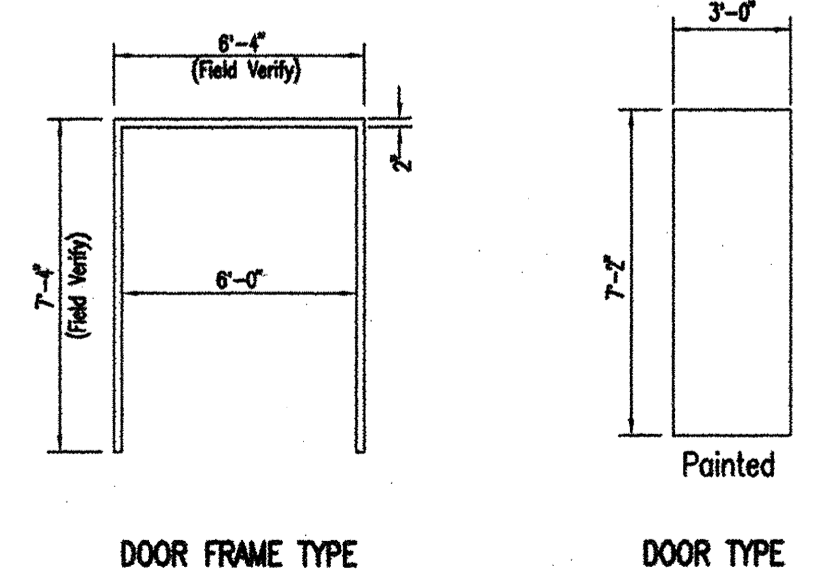
3 THRESHOLD
C3

EXTERIOR DOOR DETAILS
No Scale

Existing bridge crane with hoist. Contact hoist Manuf. replace chain and rebuild to like new condition. Hoist monorail shall be sandblasted and recoated per finish schedule.



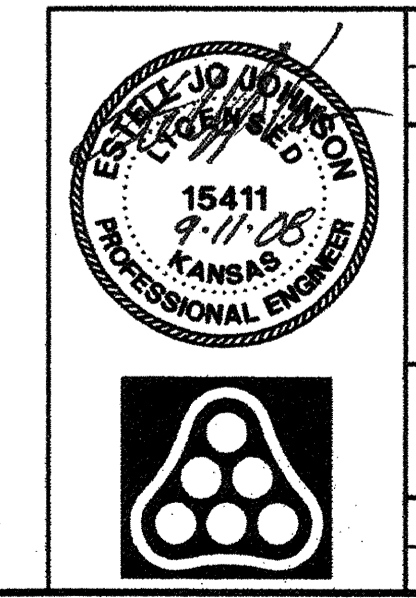
SECTION
SCALE: 1/4" = 1'



DOOR FRAME TYPE DOOR TYPE

- Exterior Building Repair Notes:
1. Tuck and Point all exterior masonry surfaces: Pump Building (approx. 1,543 S.F.) Control Vault exterior/interior face (approx. 780 S.F.)
 2. Patch all nonfunctioning wall penetrations with grout.
 3. Remove existing caulking, and Replace any damaged backer rod. Caulk all equipment penetrations.
 4. Apply exterior sealant per Finish Schedule. Ref. Sheet C5

Saved 09-10-2008 9:09:24 AM by CAL
 Plot Scale 1:4 09-11-2008 1:40:54 PM
 Q:\2006\06060\SW PS #4 Sept 08\06060-001-C3 PSta_Plan&Section-PS4



No.	Revision	By	Date
CITY OF WICHITA, KANSAS			
PUMP STATION NO. 4 (MODIFICATIONS) - PLAN AND SECTION			
STORMWATER SYSTEM IMPROVEMENTS			
Professional Engineering Consultants, P.A.			
303 S. TOPEKA • WICHITA, KANSAS 67202 316-262-2691 • FAX 316-262-3003			
Designed by	KLR, E.J.	Job No.	34-06060-042
Drawn by	BB	Date	SEPTEMBER 2008