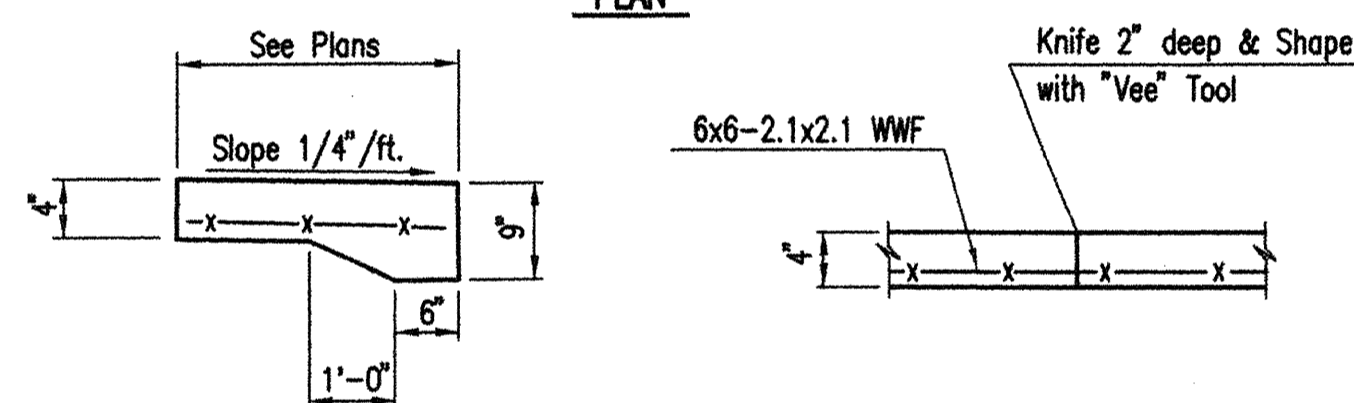
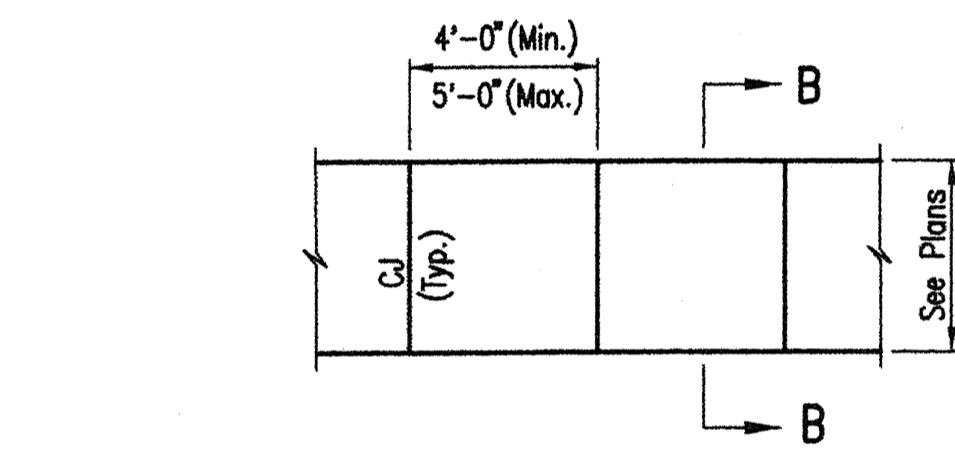


LOCATION	FLOOR	FINISH SCHEDULE			MISC. STEEL
		INT. WALLS	EXT. WALLS	CEILING	
EXISTING PUMP STATION NO. 4	SEALED CONCRETE				09960
	EPOXY				
	SPECIFICATION SECTION				
	CONCRETE/MASONRY IMMERSION				
	CONCRETE/MASONRY EXPOSED				
	POROUS CONCRETE/MASONRY				
	POROUS CONCRETE/MASONRY EXPOSED CLEAR				
	SPECIFICATION SECTION				
	CONCRETE/MASONRY EXPOSED				
	CONCRETE/MASONRY BELOW GRADE				
	POROUS CONCRETE/MASONRY EXPOSED				
	POROUS CONCRETE/MASONRY EXPOSED CLEAR				
SPECIFICATION SECTION					
CONCRETE IMMERSION					
CONCRETE EXPOSED					
POROUS CONCRETE					
GYPSUM					
SPECIFICATION SECTION					
SPECIFICATION SECTION					

* NOTE: ALSO REFERENCE DRAWINGS FOR ADDITIONAL FINISH REQUIREMENTS.

GENERAL NOTES:

1. COATINGS IN CONTACT WITH POTABLE WATER MUST COMPLY WITH AWWA AND NSF.
2. STEEL DESIGNATION INCLUDES STRUCTURAL, TANKS, PIPE AND EQUIPMENT.
3. SURFACES NOT TO BE PAINTED:
ALUMINUM, FIBERGLASS, INSULATED PIPE & STAINLESS STEEL.



SECTION B-B

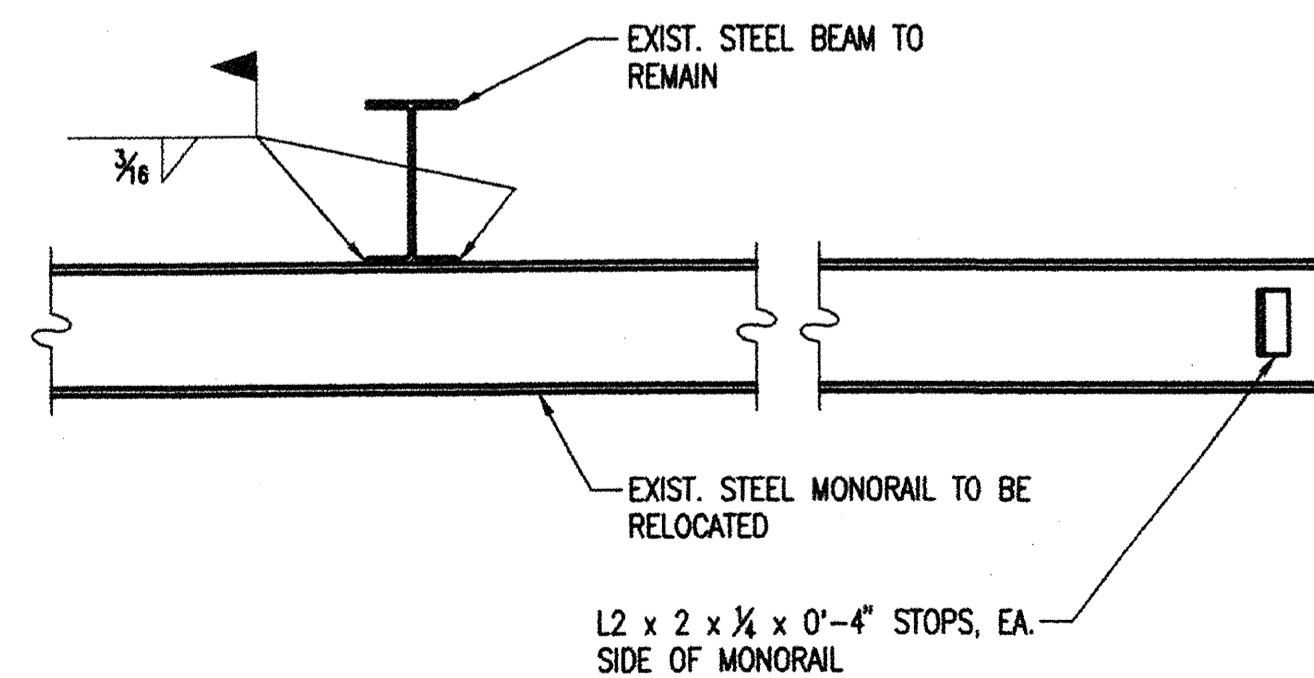
CONTRACTION JOINT (CJ)

Note: No sawn contraction joints will be allowed

* Provide thickened edge at areas adjacent to drives and parking areas

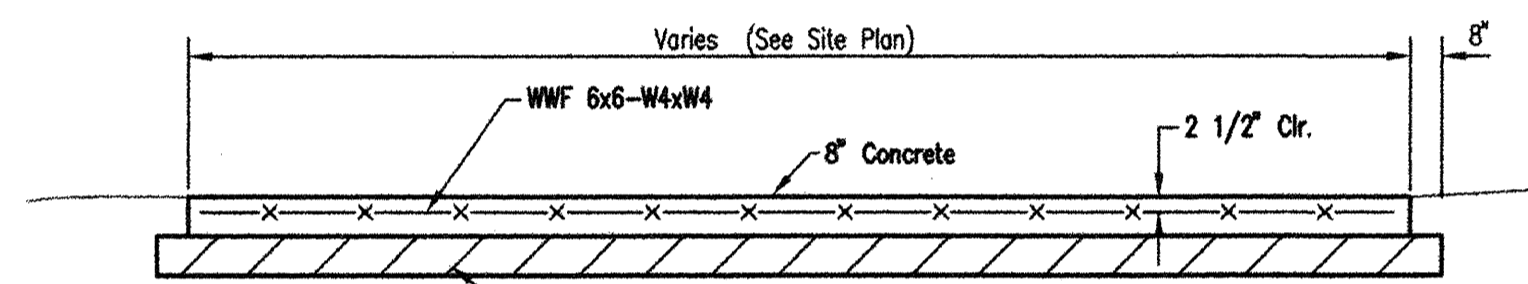
SIDEWALK/MOW STRIP DETAILS

Note: The Mow Strip shall be 1'-0" wide. Ref. Plans for Sidewalk Width.



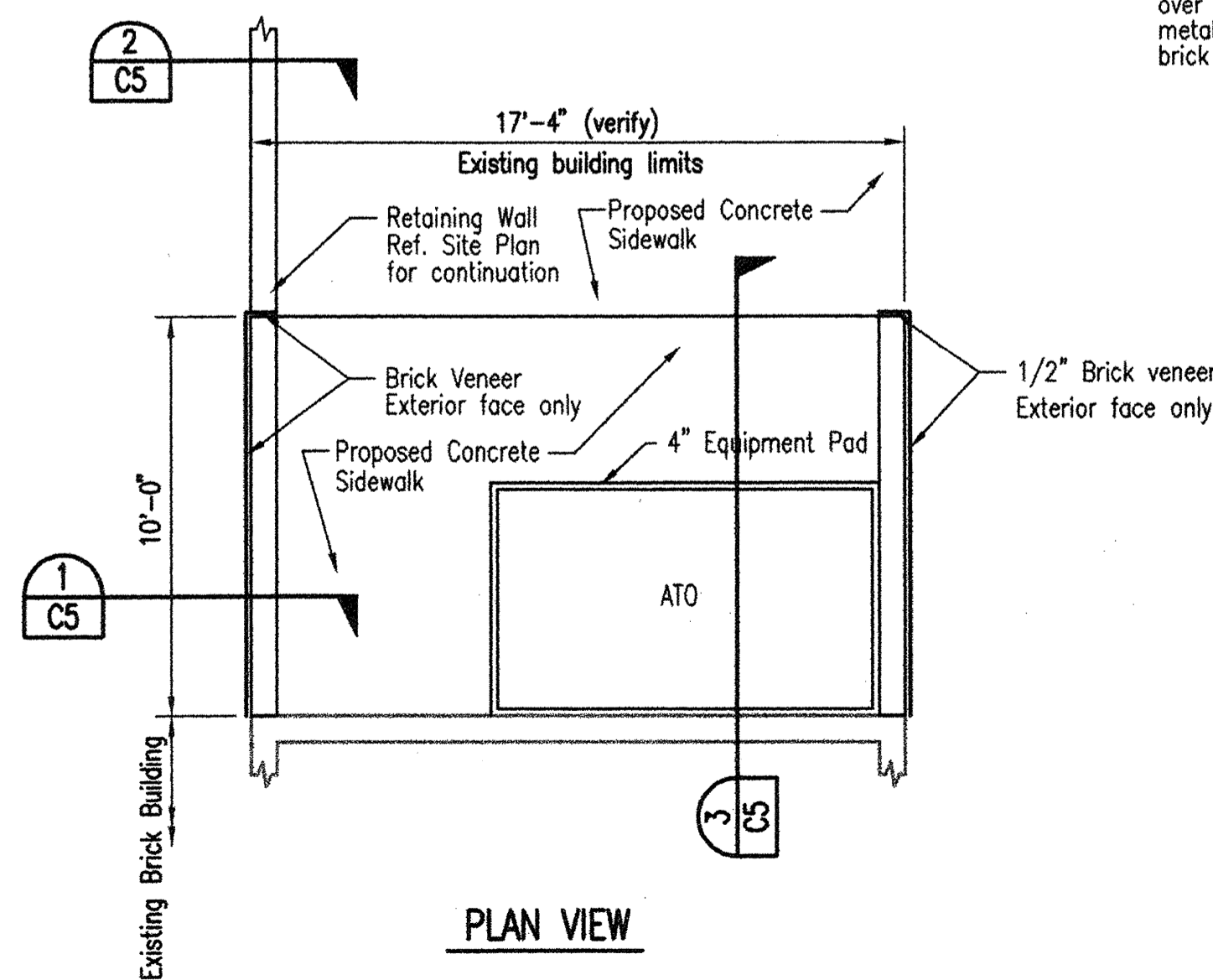
MONORAIL CONNECTION DETAIL

NO SCALE

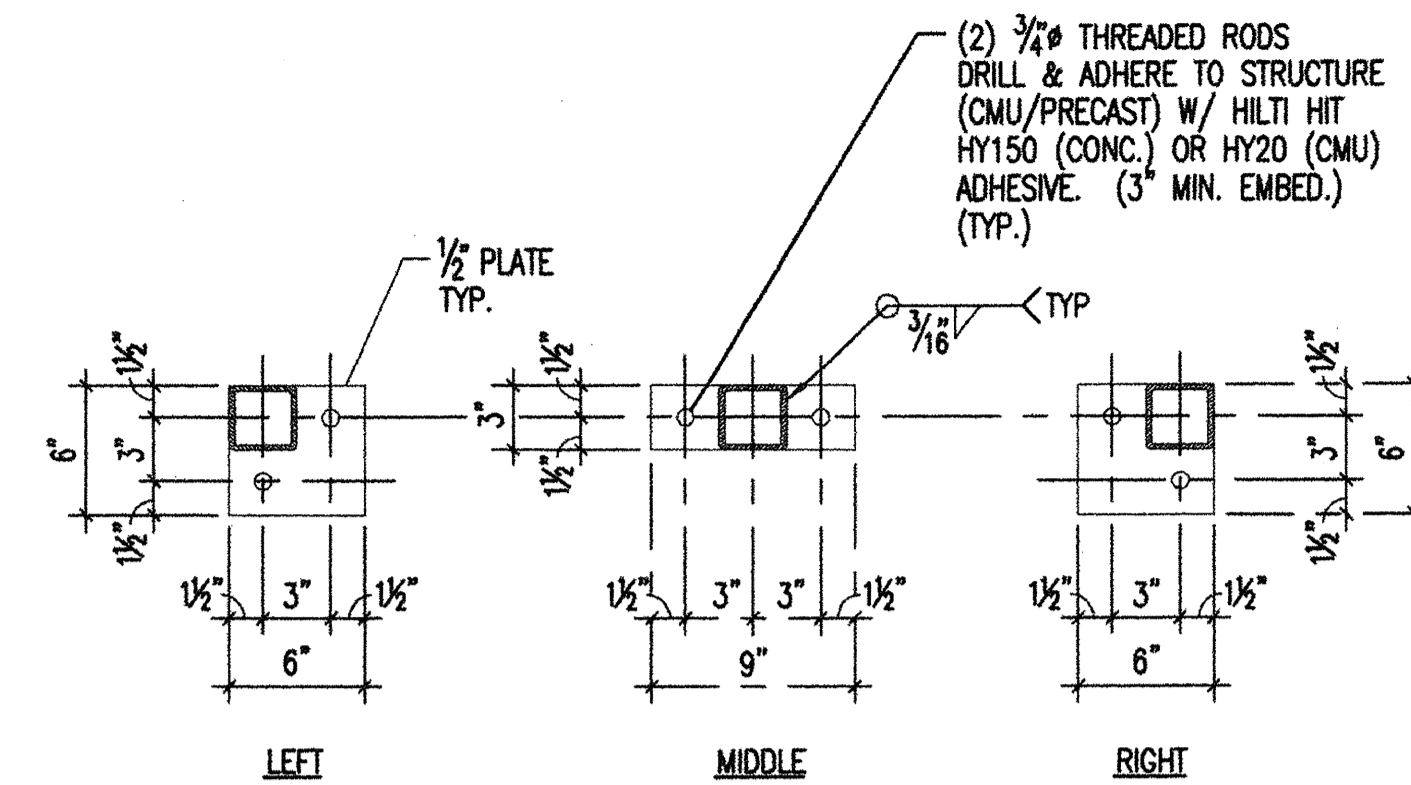


TYPICAL CONCRETE PAVEMENT DETAIL

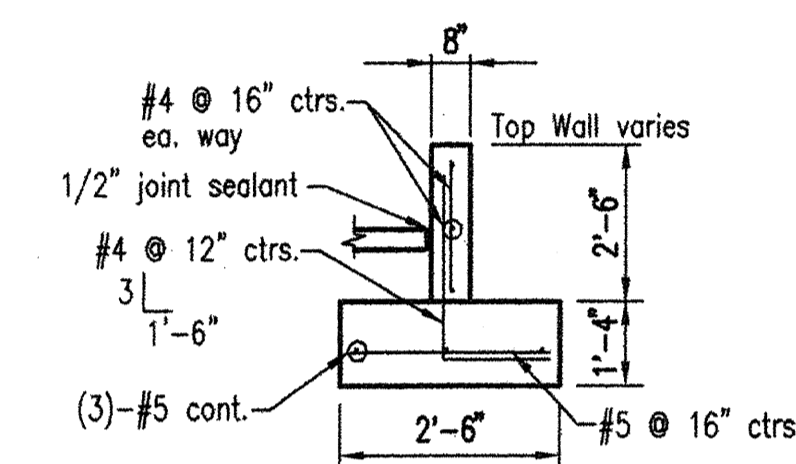
Not to Scale



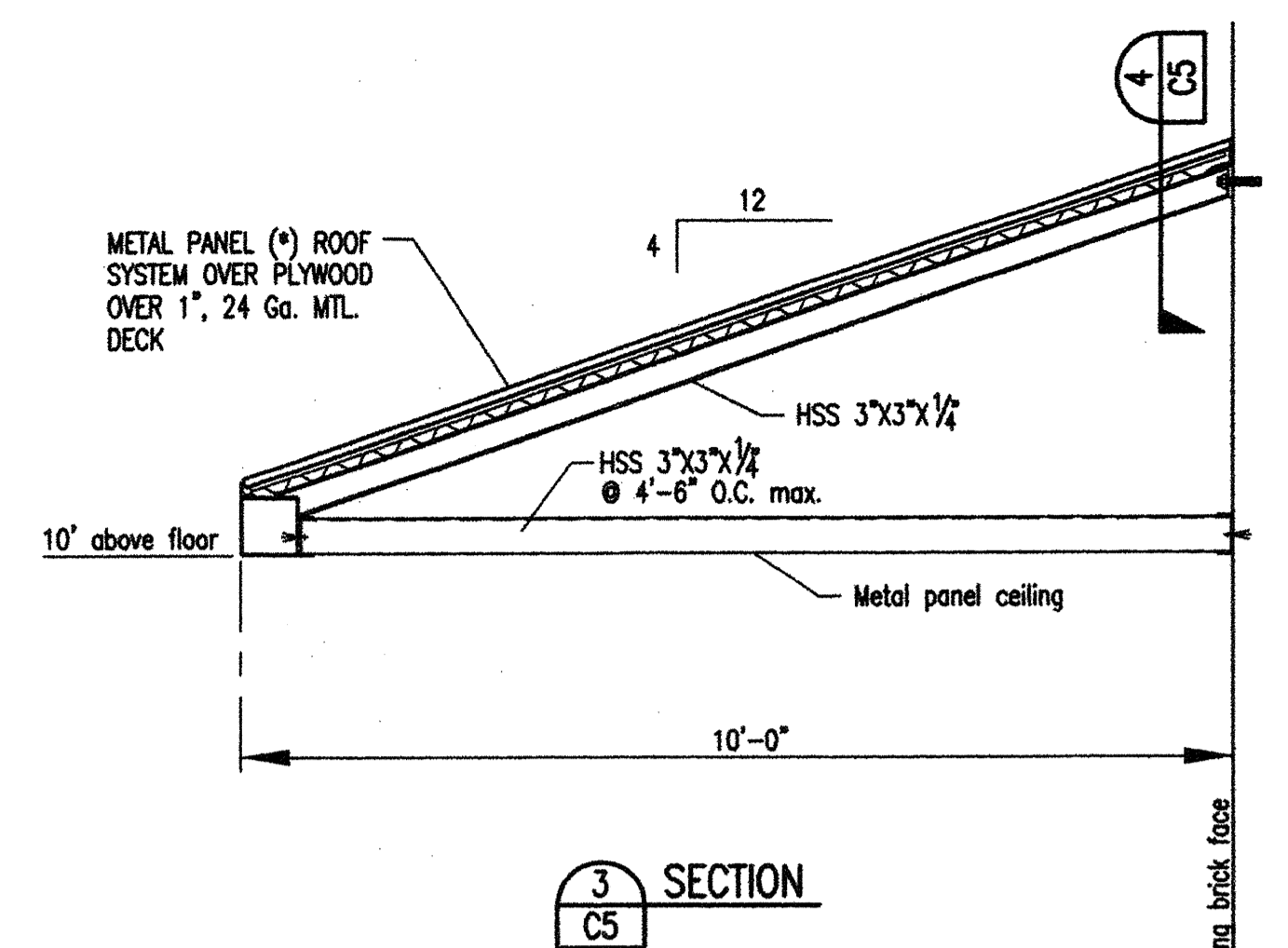
PLAN VIEW



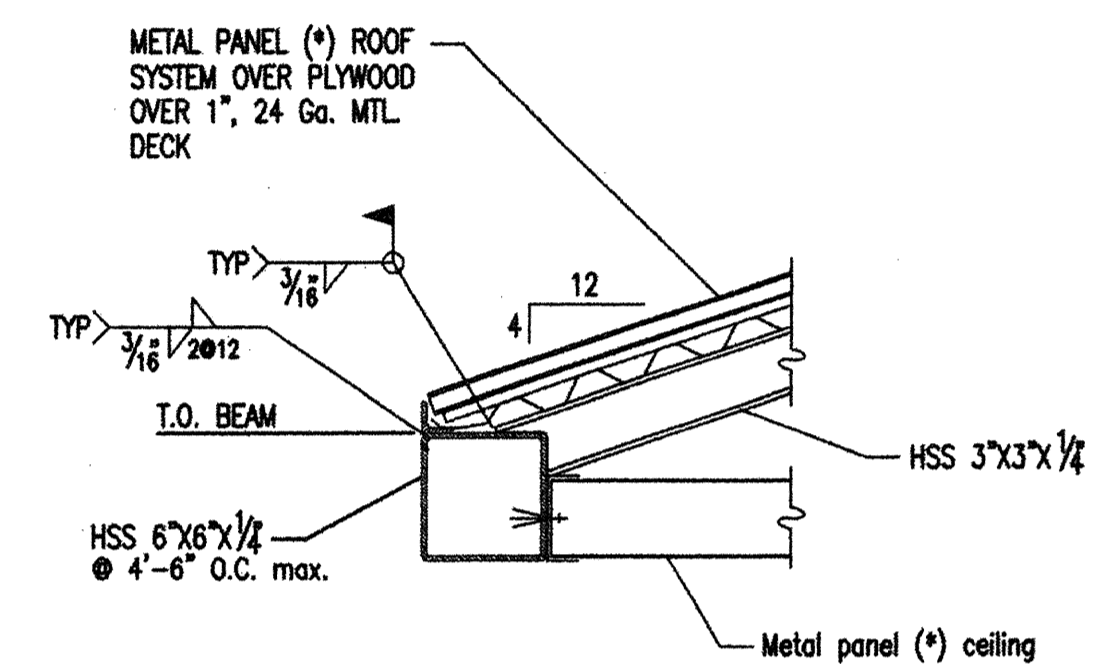
SECTION 4 C5



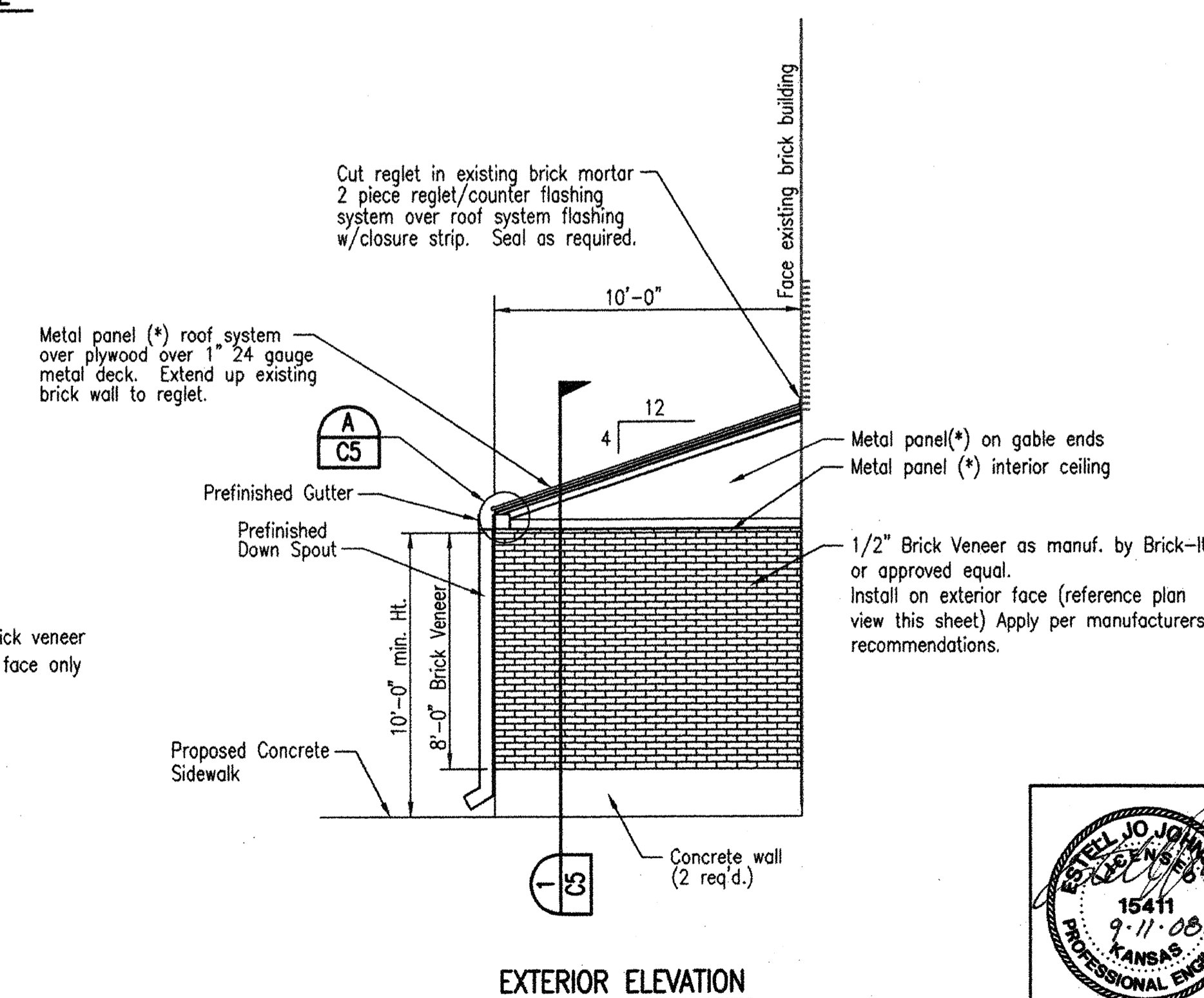
SECTION 2 C5



SECTION 3 C5

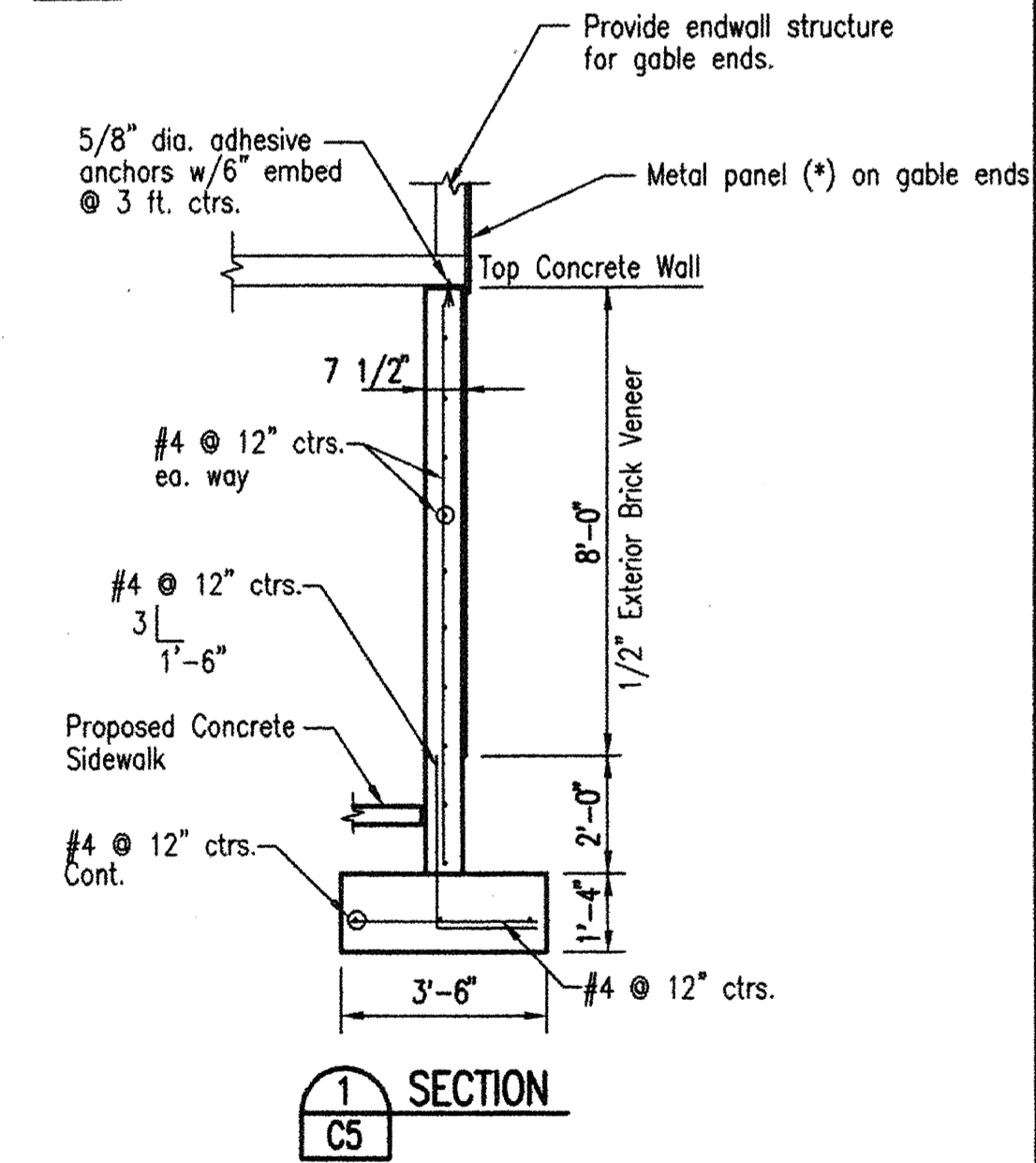


DETAIL A C5



EXTERIOR ELEVATION

(* METAL PANELS SHALL BE EXPOSED FASTENING TYPE (MBCI PBR PANEL, 26 GAUGE W/SIGNATURE 200 FINISH, OR EQUAL). OWNER TO SELECT COLOR. PROVIDE ALL FLASHING & TRIM REQUIRED FOR WEATHER RESISTANT ROOF.



SECTION 1 C5

	No.	Revision	By	Date
	CITY OF WICHITA, KANSAS			
MISCELLANEOUS DETAILS				
STORMWATER SYSTEM IMPROVEMENTS				
Professional Engineering Consultants, P.A.				
303 S. TOPEKA • WICHITA, KANSAS 67202 316-262-2691 • FAX 316-262-3003				
Designed by	KLR, EAJ	Job No.	34-06080-042	Sh. C5 of 8
Drawn by	BB	Date	SEPTEMBER 2008	

Saved 09-15-2008 11:44:42 AM by CAL
 Plot Scale 09-15-2008 1:16:35 PM
 C:\2008\06080\SW PS #4 Sept. 08\06080-001-C5 MiscDetails-P4