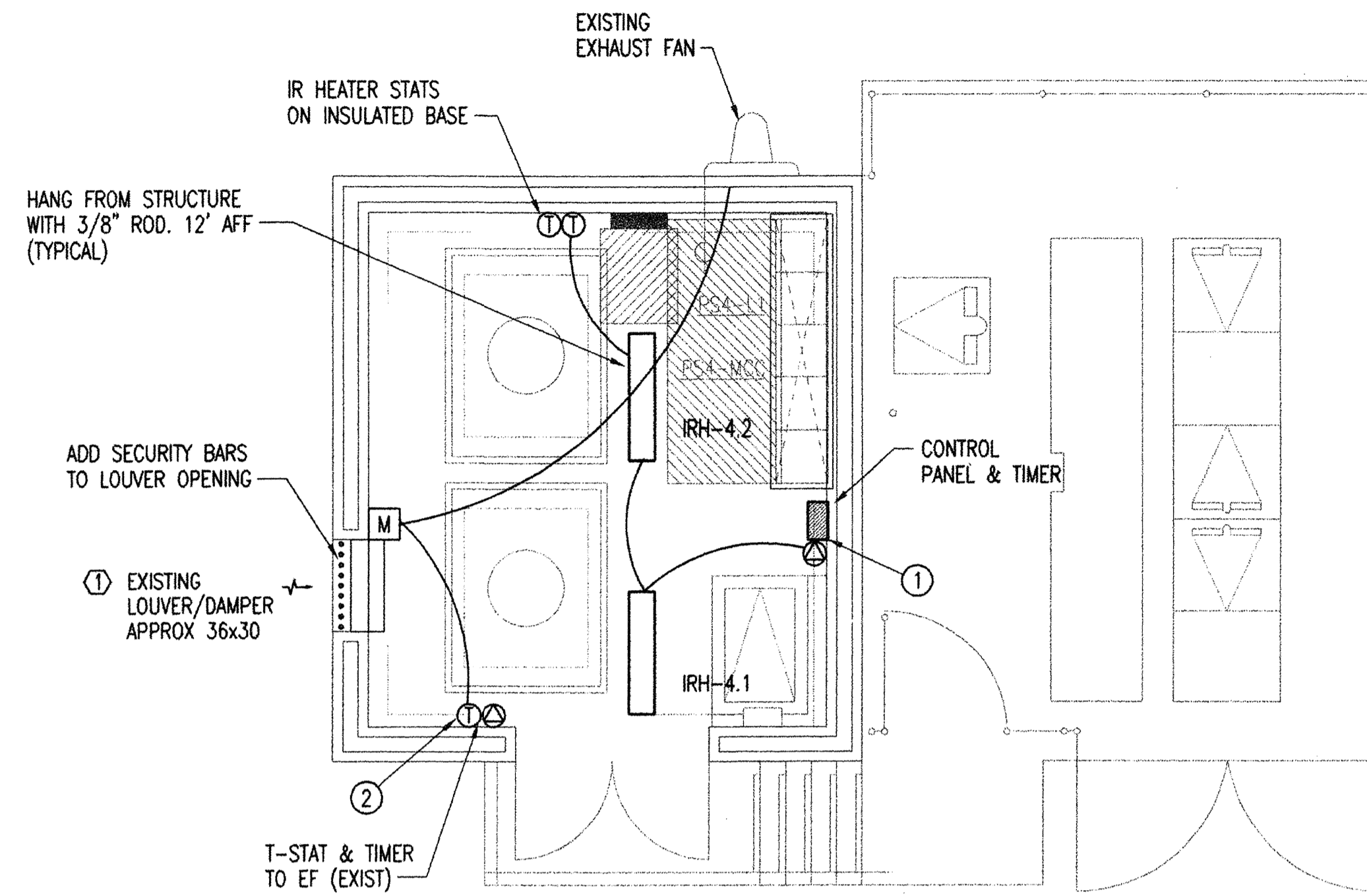


IR HEATER SCHEDULE - ELECTRIC

MARK	LOC. AT ROOM	TYPE	STAGES	HEATING CAPACITY		L x W x D	ELECTRIC	REMARKS	ELECT. REF.
				KW	BTUH				
IRH-4.1	#4	HORZ	2	4.5	15350	48 x9 1/2 x7 1/2	480/1		
IRH-4.2	#4	HORZ	2	4.5	15350	48 x9 1/2 x7 1/2	480/1		

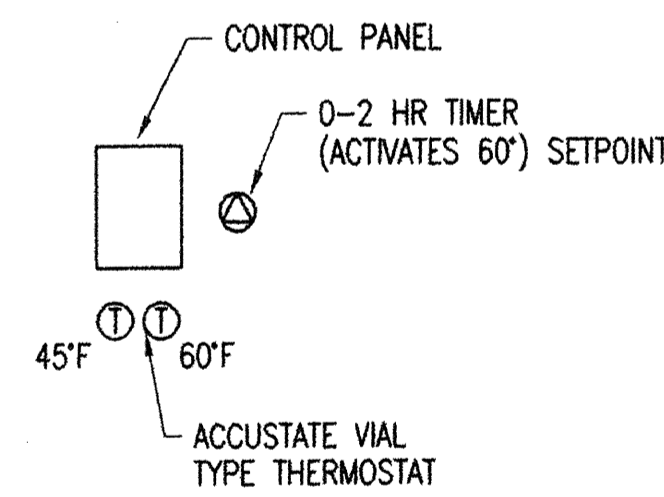
① BASED ON 3P 3506 A CEILING MOUNTED HEATER. PROVIDE WITH FPC CONTROL PANEL W/LOW VOLTAGE TSDAT.



MECHANICAL FLOOR IPLAN

SCALE: 1/4" = 1'-0"

- ① CONTROL PANEL & T-STATS/TIMER
FIELD VERIFY EXACT LOCATION



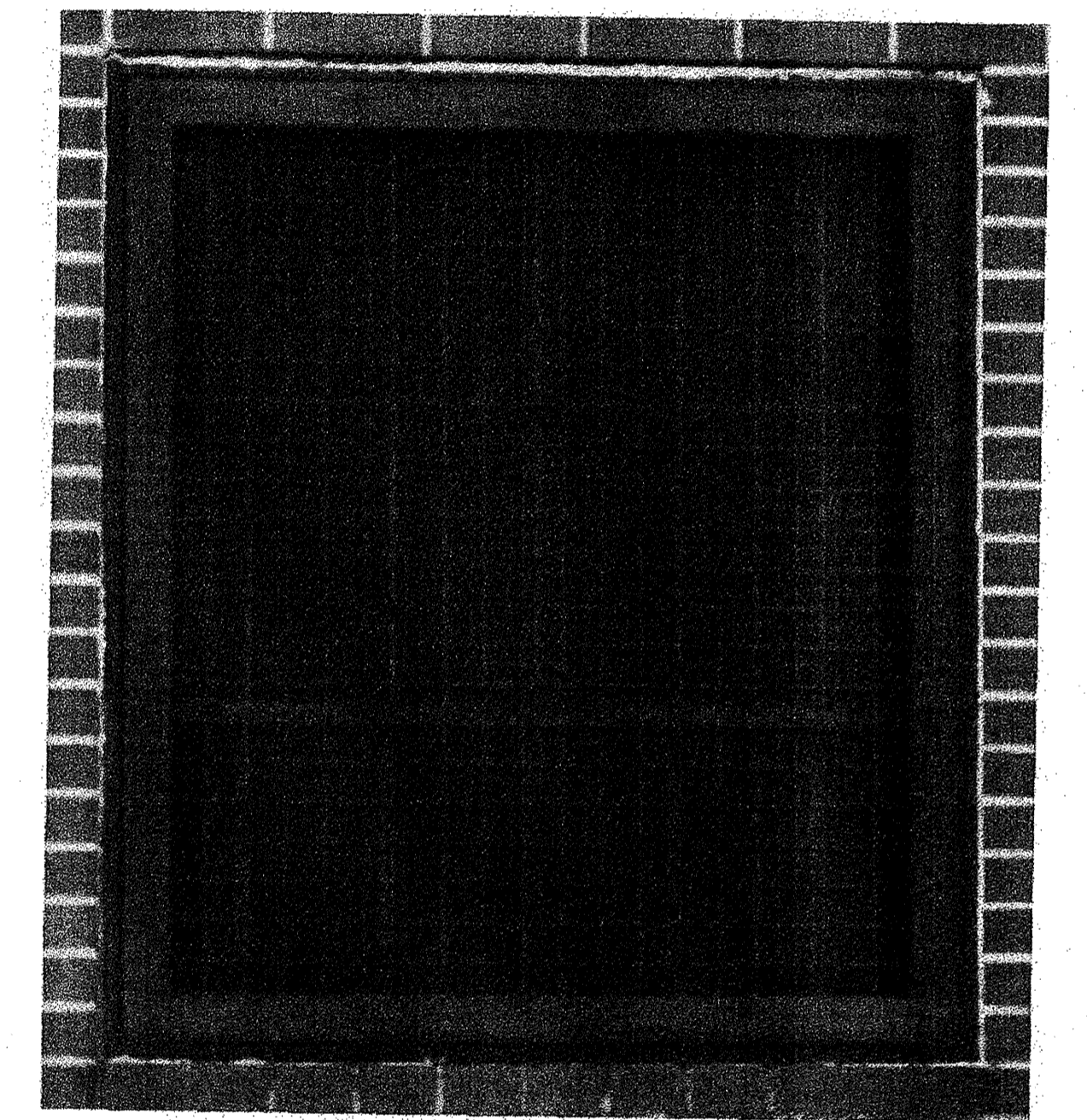
NORMAL SETPOINT IS 45°F
WHEN 0-2 HR TIMER IS ACTIVATED, SETPOINT IS 60°F

- ② VENTILATION FAN CONTROLS

- ①⊕ T-STAT (90°F) AND 0-2 HR TIMER

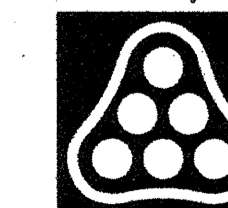
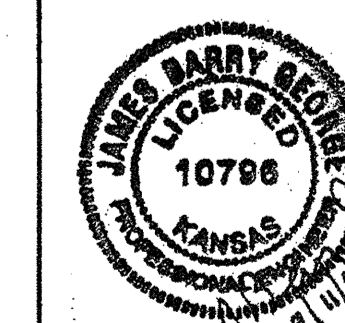
CONTROL STARTS EXHAUST FAN AND OPENS DAMPERS. ACTIVATES ABOVE 90°F OR WITH 0-2 HR TIMER

- ① REPLACE EXISTING LOUVER SIMILAR TO LOUVER IN PHOTO THIS SHEET. THE LOUVER IN PHOTO IS INSTALLED AT PUMP STATION #1. LOCATED JUST SOUTH OF MAPLE AT HIGHWAY 235 WEST OF TOWN WEST SQUARE.



SAMPLE LOUVER PHOTO
NO SCALE
LOUVER SIZE TO MATCH EXISTING LOUVER OPENING

Saved: 09-11-2008 12:49:50 PM by: RBG
 Plot Scale: 09-11-2008 12:54:03 PM
 M:\2008\06060\018\06060-018.MECH



Revision		By	Date
CITY OF WICHITA, KANSAS PUMP STATION #4 MECHANICAL FLOOR PLAN STORMWATER SYSTEM IMPROVEMENTS			
Professional Engineering Consultants, P.A. 303 S. TOPEKA • WICHITA, KANSAS 67202 316-262-2691 • FAX 316-262-3003			
Designed by	RBG, EJJ	Job No.	34-06060-042
Drawn by	JBG	Date	SEPTEMBER 2008
			Sht. M.1.1 of 1