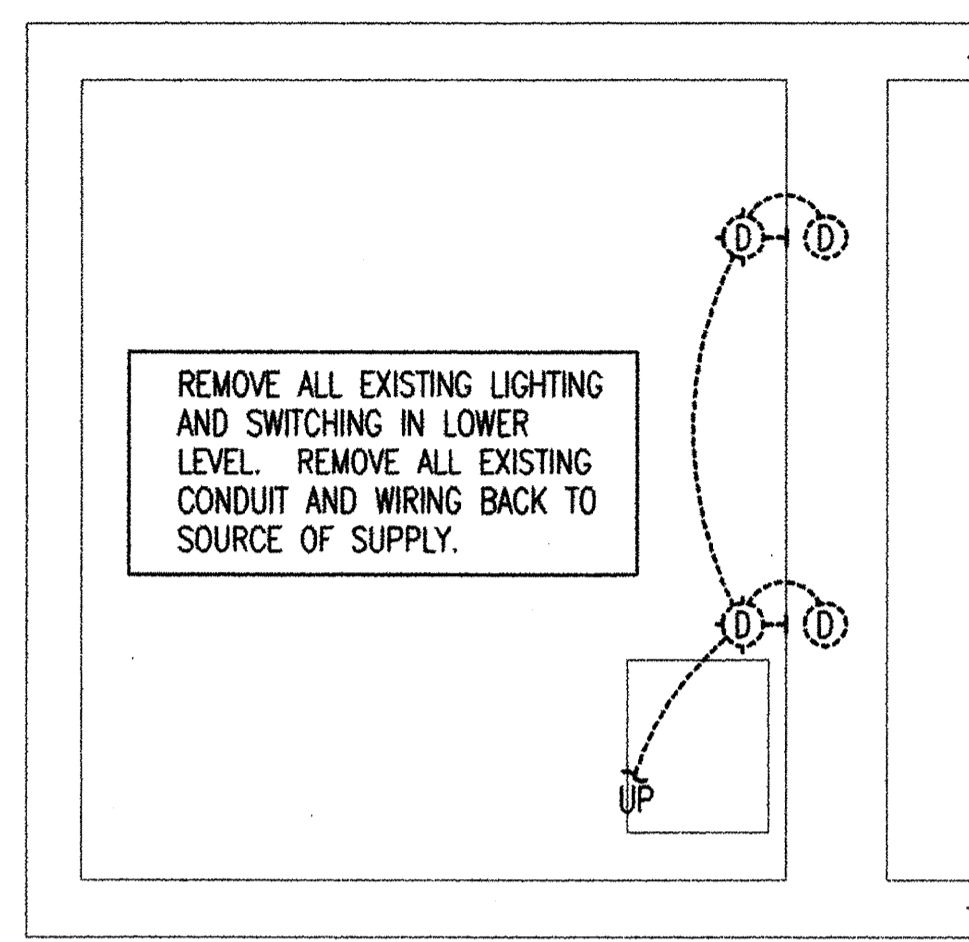
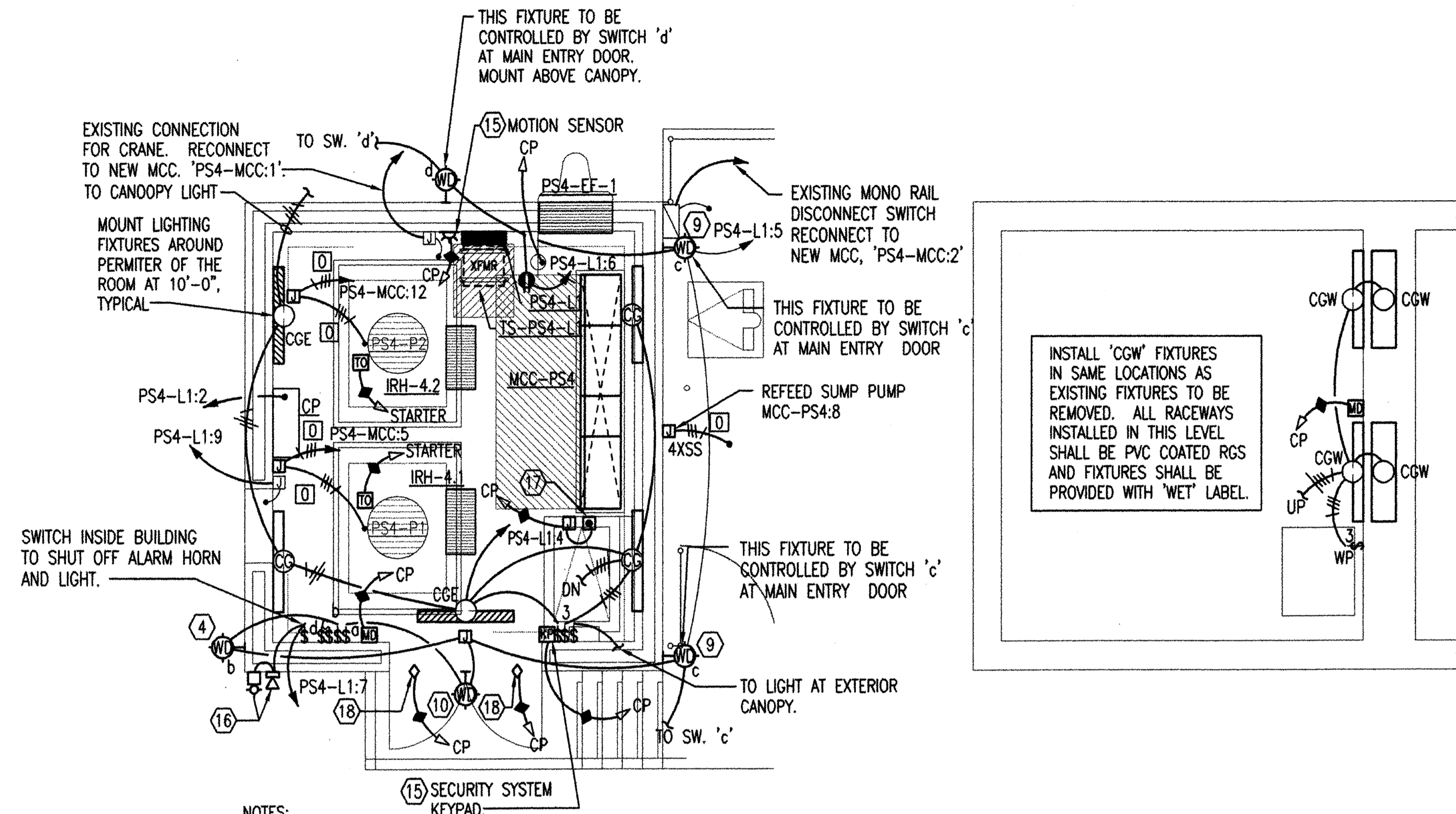


DEMOLITION ELECTRICAL FLOOR PLAN
SCALE: 1/4" = 1'-0"

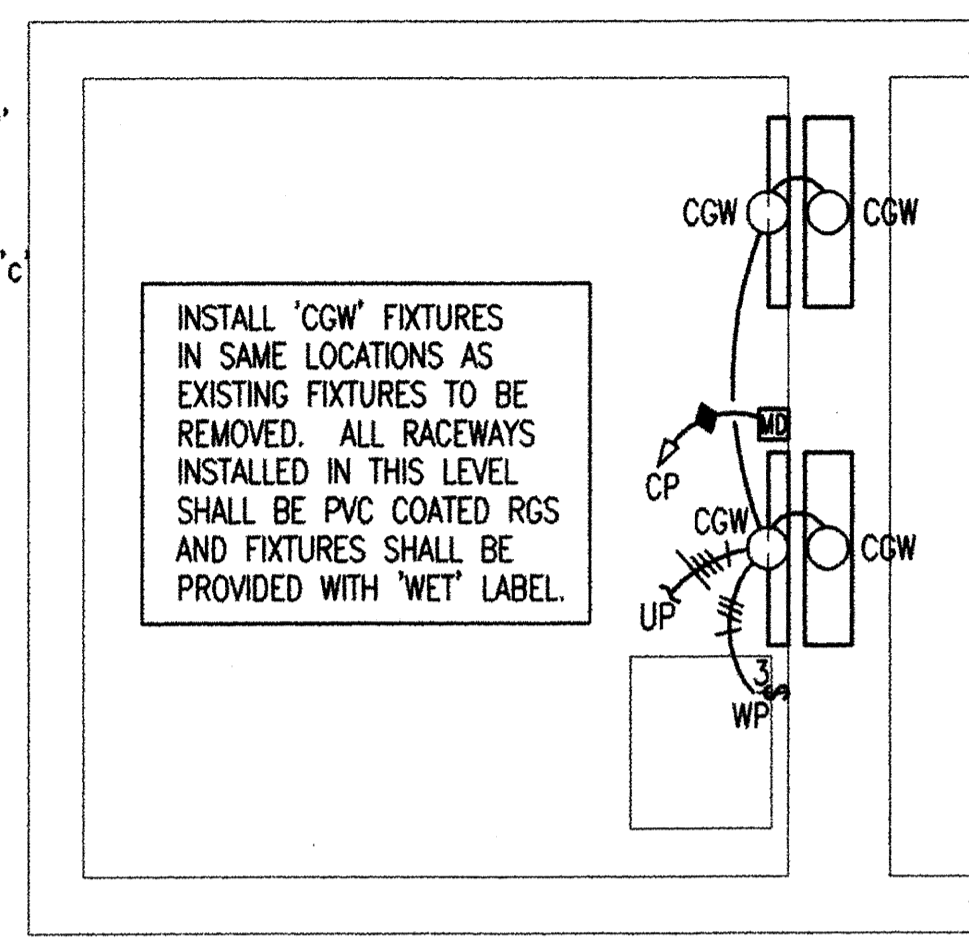


DEMOLITION ELECTRICAL PLAN - WET WELL
SCALE: 1/4" = 1'-0"



NOTES:
(2) MOTORIZED VALVES ARE LOCATED AT THE VALVE VAULT WEST OF THE PUMP STATION. THESE (2) VALVES SHALL BE RECONNECTED TO PS4-MCC. REFER TO ONE-LINE DIAGRAM FOR ADDITIONAL INFORMATION. PROVIDE CONNECTION OF EXISTING GFCI RECEPTACLE CIRCUIT FROM VALVE VAULT IN NEW PANEL PS4-L1 AS REQUIRED. PROVIDE RECONNECTION OF (2) EXISTING PRESSURE SWITCHES AT (2) EXISTING VALVES IN VAULT FOR PUMP FAILURE NOTIFICATION. RECONNECT TO STARTERS IN NEW PS4-MCC AND EXTEND PUMP FAILURE CIRCUITING TO CP.

ELECTRICAL FLOOR PLAN
SCALE: 1/4" = 1'-0"



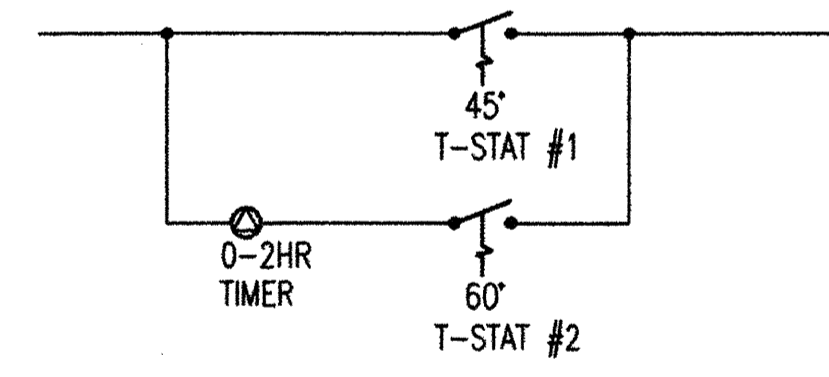
ELECTRICAL PLAN - WET WELL
SCALE: 1/4" = 1'-0"

KEY NOTES:

- ① REMOVE EXISTING FEEDER FROM EXISTING MCC TO PUMP.
- ② REMOVE ALL CONDUITS, JUNCTION BOXES, ETC. ASSOCIATE WITH EXISTING PUMP GREASING SYSTEM. THE EXISTING GREASE SYSTEM WAS LEFT ABANDONED WHEN PUMPS WERE RE-BUILT. AN OILER SYSTEM IS NOW USED.
- ③ EXISTING CONNECTION FOR MONORAIL. REMOVE ALL ELECTRICAL CONNECTIONS FOR MONORAIL INCLUDING ALL CONDUIT, WIRING, AND JUNCTION BOXES COMPLETE BACK TO SOURCE OF SUPPLY.
- ④ EXISTING LIGHT FIXTURE TO BE REMOVED. A NEW FIXTURE WILL BE INSTALLED IN EXISTING LOCATION.
- ⑤ EXISTING LIGHT FIXTURE TO BE REMOVED. PROVIDE WEATHERPROOF BLANK COVER PLATE OVER OUTLET BOX WHERE FIXTURE IS REMOVED.
- ⑥ EXISTING CONNECTIONS AT LOUVERS WILL BE REWORKED FOR INTERLOCKING WITH EXHAUST FAN. CURRENTLY THE LOUVERS ARE FED FROM THE EXISTING MOTOR CONTROL CENTER.
- ⑦ EXISTING LIGHT FIXTURE TO BE REMOVED. REMOVE ALL WIRING FOR FIXTURE BACK TO SOURCE OF SUPPLY. PROVIDE A BLANK COVERPLATE OVER EXISTING OUTLET BOX.
- ⑧ EXISTING EXHAUST FAN TO BE REPLACED. REMOVE ELECTRICAL CONNECTION FOR UNIT BACK TO SOURCE OF SUPPLY.
- ⑨ PROVIDE NEW LIGHT IN EXISTING LOCATION. CONNECT TO EXISTING CIRCUITING. PROVIDE ADDITIONAL ANCHORS AS REQUIRED FOR PROPER MOUNTING.
- ⑩ PROVIDE NEW LIGHT ON EXISTING WALL. MOUNT FIXTURE AT THE SAME MOUNTING HEIGHT AS THE EXISTING FIXTURES INSTALLED ON THE EAST SIDE OF THE BUILDING.
- ⑪ EXISTING DISCONNECT SWITCH AND CONNECTION TO SUMP PUMP TO BE REMOVED BACK TO SOURCE OF SUPPLY.
- ⑫ EXISTING LEVEL CONTROLS TO BE RECONNECTED TO NEW CONTROL PANEL.
- ⑬ CONTROL PANEL REMOVED.
- ⑭ EXISTING MCC TO BE REPLACED.
- ⑮ CONTROLS CONTRACTOR SHALL PROVIDE AN INTRUSION ALARM SYSTEM. THIS SYSTEM SHALL BE PROVIDED WITH (1) KEY PAD AND (1) INFRARED MOTION DETECTOR. MOUNT MOTION DETECTOR SO THAT MOTION IS DETECTED AT THE FLOOR HATCH AND THE MAIN DOOR ACTIVATION OF THE MOTION SENSOR SHALL PROVIDE AN INPUT TO THE CONTROL SYSTEM FOR SIGNAL AT THE CITY OF WICHITA MAIN CONTROL PANEL AND SHALL PROVIDE A CONTACT CLOSURE FOR EMERGENCY HORN AND LIGHT MOUNTED ON THE BUILDING.
- ⑯ PROVIDE AND INSTALL A 120V. HORN AND 120V. RED FLASHING STROBE ON THE SIDE OF THE BUILDING. ROUTE 120V. POWER WIRING VIA A SINGLE POLE CONTACTOR WITH COIL COMPATIBLE WITH THE CONTROL SYSTEM. THESE DEVICES SHALL BE ACTIVATED WHENEVER THE MAN DOWN ALARM OR THE INTRUSION ALARMS ARE ACTIVATED.
- ⑰ PROVIDE AND INSTALL A SWITCH ON THE FLOOR HATCH TO THE WET WELL. THIS SWITCH SHALL PROVIDE A CONTACT CLOSURE FOR INDICATION AT THE PUMP STATION CONTROL PANEL.
- ⑱ CONNECT ELECTRIC DOOR POSITION SWITCH TO INTRUSION ALARM SYSTEM AS REQUIRED.

PLAN NOTES:

- 1. BRANCH CIRCUITS ARE INDICATED AS ONE CIRCUIT HOME RUNS FOR CLARITY ONLY. CONTRACTOR MAY GROUP SINGLE POLE BRANCH CIRCUITS IN MULTIPLE CIRCUIT HOME RUNS. (3 CIRCUITS MAXIMUM). A GROUND CONDUCTOR SIZED PER N.E.C. ARTICLE 250 IS REQUIRED IN ALL CONDUITS.
- 2. FOR CONNECTION REQUIREMENTS TO MECHANICAL UNITS, SEE MECHANICAL EQUIPMENT CONNECTION SCHEDULE.
- 3. AFTER REMOVAL OF EXISTING ELECTRICAL EQUIPMENT, CONTRACTOR SHALL REMOVE SCALING ON EXISTING WALLS AND SEAL WALLS PER CIVIL PLANS PRIOR TO INSTALLATION OF NEW ELECTRICAL EQUIPMENT ON THE WALLS OR IN FRONT OF THEM. UPON COMPLETION OF PROJECT ALL WALLS SHALL BE CLEANED AND PROPERLY COATED.



HEATER CONTROL DIAGRAM
NO SCALE

NOTES:
UNDER NORMAL CONDITIONS, T-STAT #1 SHALL PROVIDE SIGNAL TO HEATERS TO MAINTAIN TEMPERATURE AT 45° MINIMUM. SERVICE PERSONNEL MAY SET 0-2HR TIMER SUCH THAT 60° T-STAT #2 WILL CONTROL TEMPERATURE WHEN SERVICE IS BEING PROVIDED. T-STATS AND TIMER TO BE PROVIDED, WIRED, AND INSTALLED BY MECHANICAL CONTRACTOR. ALL CONDUIT AND BOXES TO BE INSTALLED BY ELECTRICAL CONTRACTOR IN LOCATIONS AS DIRECTED BY MECHANICAL CONTRACTOR.

Revised: 09-11-2008 10:54 AM by: RDB
 Drawn: 09-11-2008 10:54 AM by: RDB
 E:\2008\06060\018\06060-022.PSD ELECTRICAL PLAN by: RDB

	Revision		By	Date
	CITY OF WICHITA, KANSAS PUMP STATION #4 ELECTRICAL FLOOR PLAN STORMWATER SYSTEM IMPROVEMENTS <i>Professional Engineering Consultants, P.A.</i> <small>303 S. TOPEKA • WICHITA, KANSAS 67202 316-262-2691 • FAX 316-262-3003</small>			
	Designed by	RDB, EJJ	Job No.	34-06060-042
	Drawn by	SMS	Date	SEPTEMBER 2008

Sht. E2.2 of 6