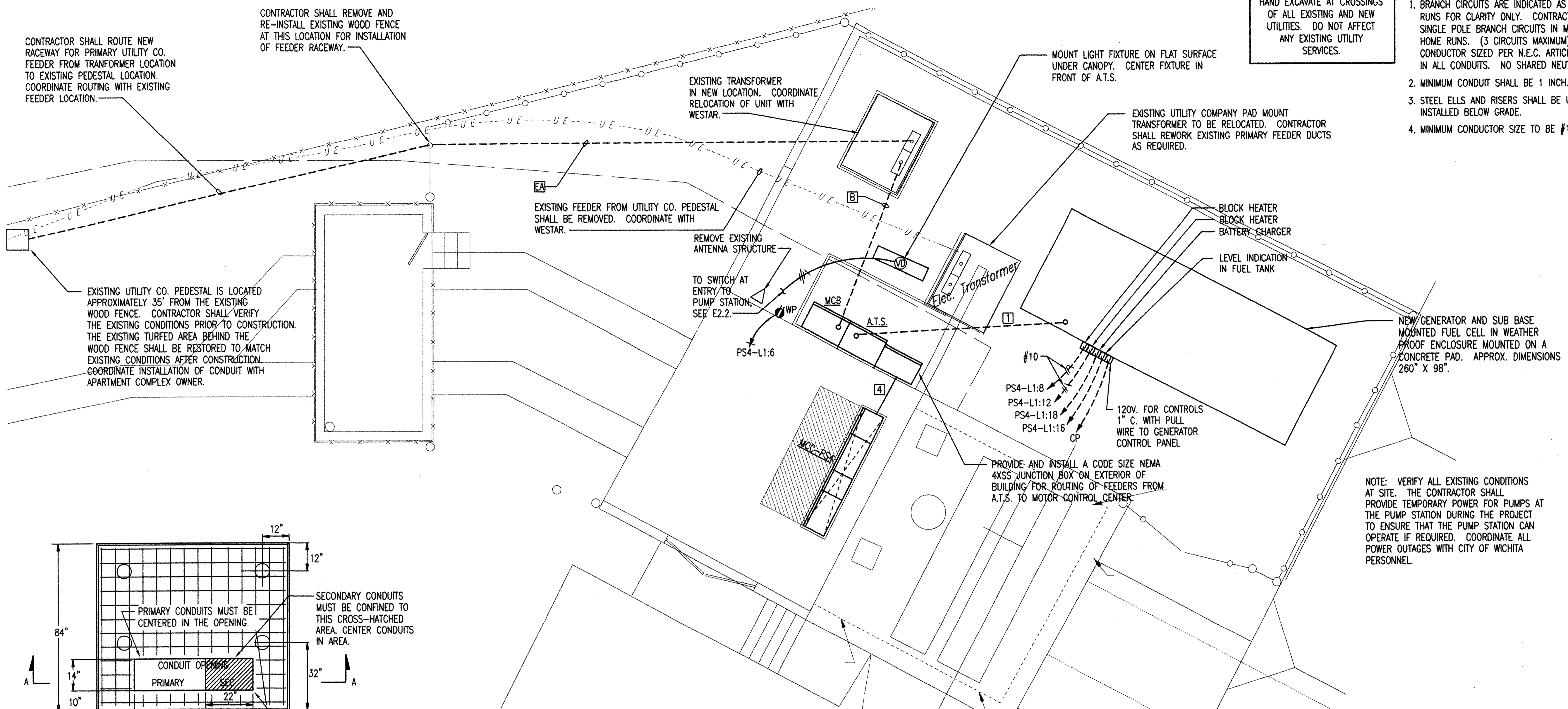


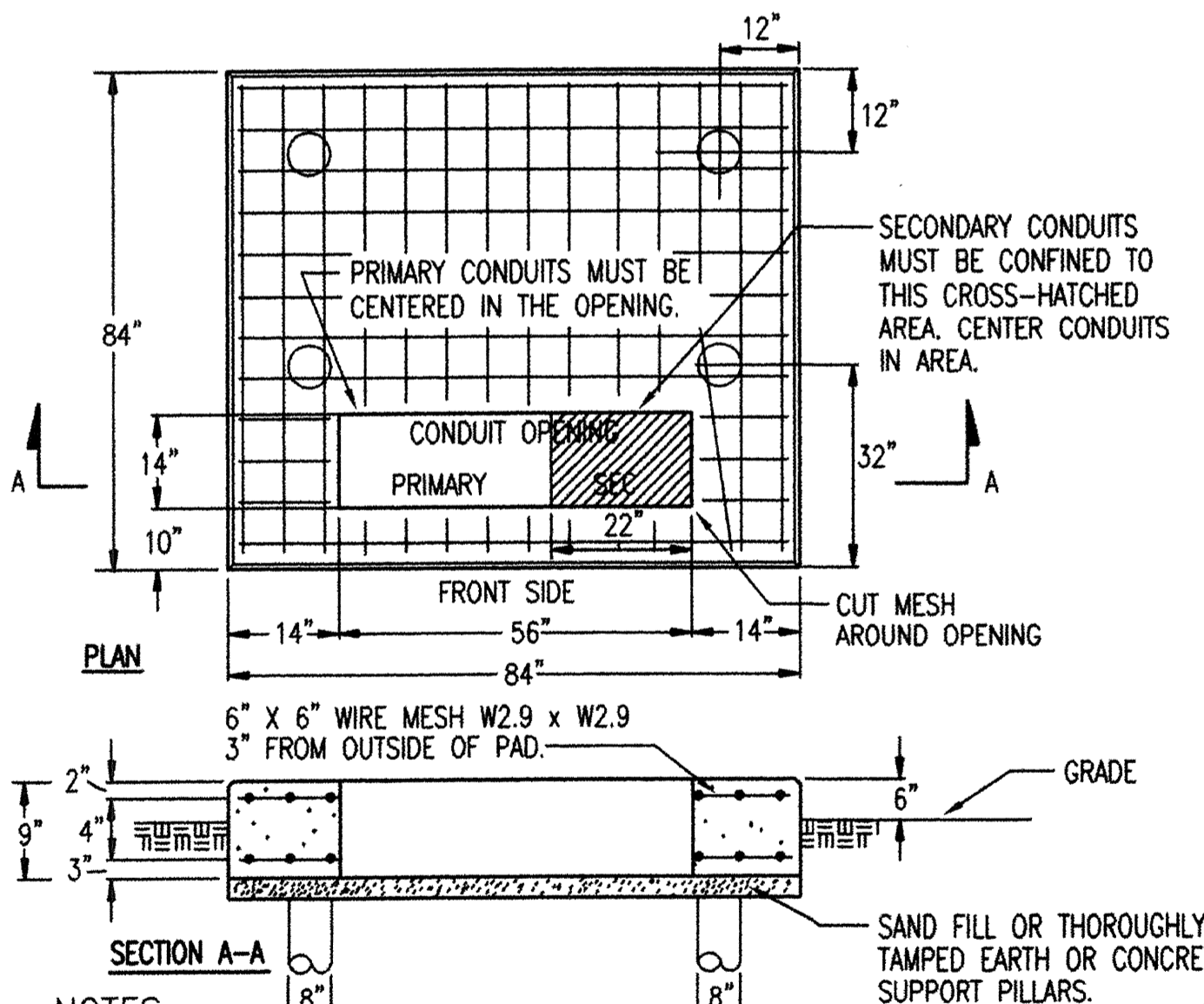
WARNING
 HAND EXCAVATE AT CROSSINGS OF ALL EXISTING AND NEW UTILITIES. DO NOT AFFECT ANY EXISTING UTILITY SERVICES.

- PLAN NOTES:**
- BRANCH CIRCUITS ARE INDICATED AS ONE CIRCUIT HOME RUNS FOR CLARITY ONLY. CONTRACTOR MAY GROUP SINGLE POLE BRANCH CIRCUITS IN MULTIPLE CIRCUIT HOME RUNS. (3 CIRCUITS MAXIMUM). A GROUND CONDUCTOR SIZED PER N.E.C. ARTICLE 250 IS REQUIRED IN ALL CONDUITS. NO SHARED NEUTRALS.
 - MINIMUM CONDUIT SHALL BE 1 INCH.
 - STEEL ELLS AND RISERS SHALL BE USED FOR ALL CONDUITS INSTALLED BELOW GRADE.
 - MINIMUM CONDUCTOR SIZE TO BE #10 CU.



NOTE: VERIFY ALL EXISTING CONDITIONS AT SITE. THE CONTRACTOR SHALL PROVIDE TEMPORARY POWER FOR PUMPS AT THE PUMP STATION DURING THE PROJECT TO ENSURE THAT THE PUMP STATION CAN OPERATE IF REQUIRED. COORDINATE ALL POWER OUTAGES WITH CITY OF WICHITA PERSONNEL.

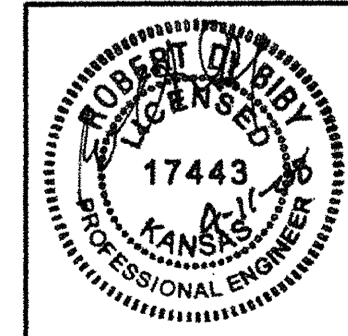
ELECTRICAL SITE PLAN
 SCALE: 1/4" = 1'-0"



- NOTES:**
- VERIFY PAD LOCATION, DIMENSIONS & ALL REQUIREMENTS WITH LOCAL UTILITY CO.
 - THE TOP OF THE TRANSFORMER PAD SHALL RECEIVE A SMOOTH TROWEL FINISH. THE CORNERS AND EDGES SHALL BE ROUNDED OR BEVELLED.
 - THE CONCRETE SHALL BE A MINIMUM OF 3,000 LB. MIX.
 - CONTRACTOR SHALL EXTEND FORMS DOWN TO AT LEAST 3" BELOW AVERAGE GROUND LINE.
 - TOP OF CONDUITS SHALL BE FLUSH WITH TOP OF PAD.
 - THE CONDUIT OPENING SHALL BE FREE AND CLEAR OF CONCRETE.
 - PILLARS ARE FORMED BY AUGERING AN 8" DIAMETER HOLE TO A DEPTH OF UNDISTURBED EARTH. A SEPARATOR, SUCH AS TAR PAPER, SHOULD BE PLACED BETWEEN THE PILLAR AND THE PAD SO THE PAD CAN BE LEVELLED AT A LATER TIME IF NECESSARY.

1 TRANSFORMER PAD DETAIL
 NO SCALE.

Sheet 00-11-2008 9:41:16 AM by RDB
 Plot Scale 1/4" = 1'-0"
 E:\2008\06060\01\06060-024 PS4 SITE PLAN



| | | | |
|---|----------|---------|----------------|
| No. | Revision | By | Date |
| CITY OF WICHITA, KANSAS PUMP STATION #4 ELECTRICAL SITE PLAN STORMWATER SYSTEM IMPROVEMENTS | | | |
| Professional Engineering Consultants, P.A. 303 S. TOPEKA • WICHITA, KANSAS 67202 316-262-2691 • FAX 316-262-3003 | | | |
| Designed by | RDB, EJJ | Job No. | 34-06060-042 |
| Drawn by | SMS | Date | SEPTEMBER 2008 |
| | | | Sh. E2.4 of 6 |