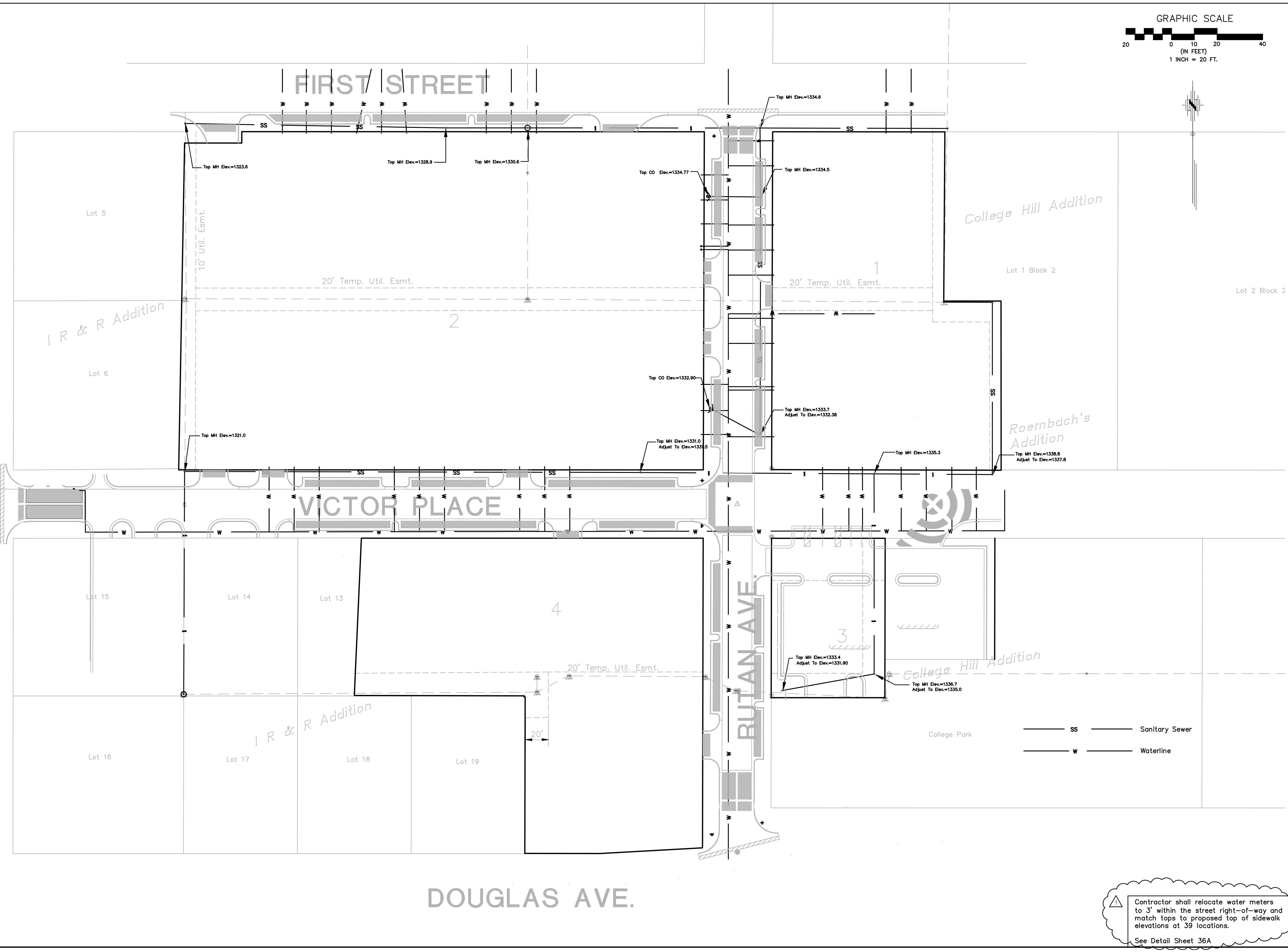


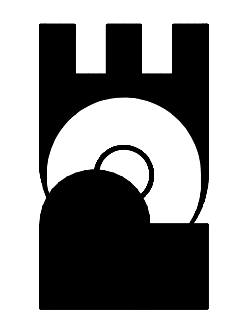
HILLSIDE AVE.



No.	Date	By	Approved	Revision
1	10/31/08	SS	JU	Revised water meter adjustment note to include relocation and added detail sheet 36A
2				
3				

PARKSTONE ADDITION  
 STREET IMPROVEMENTS  
 SANITARY SEWER MANHOLE ADJUSTMENTS  
 CITY OF WICHITA, KANSAS  
 JAMES L. ARNOUR, P.E. - CITY ENGINEER  
 Private Project # 472-85471 O.C.A. # 786166

POE & ASSOCIATES, INC.  
 CONSULTING ENGINEERS  
 8940 E. Central, Suite 200 - Wichita, KS 67208-4242  
 Phone 316/685-4114 - FAX 316/685-4444



**FINAL**  
 Designed By: S. Schmidt/J. Ubert  
 Drawn By: A. Moss  
 P.O. Job No.: 1879A  
 Date: September 2008  
 Sheet 36 of 44

Contractor shall relocate water meters to 3' within the street right-of-way and match tops to proposed top of sidewalk elevations at 39 locations.  
 See Detail Sheet 36A