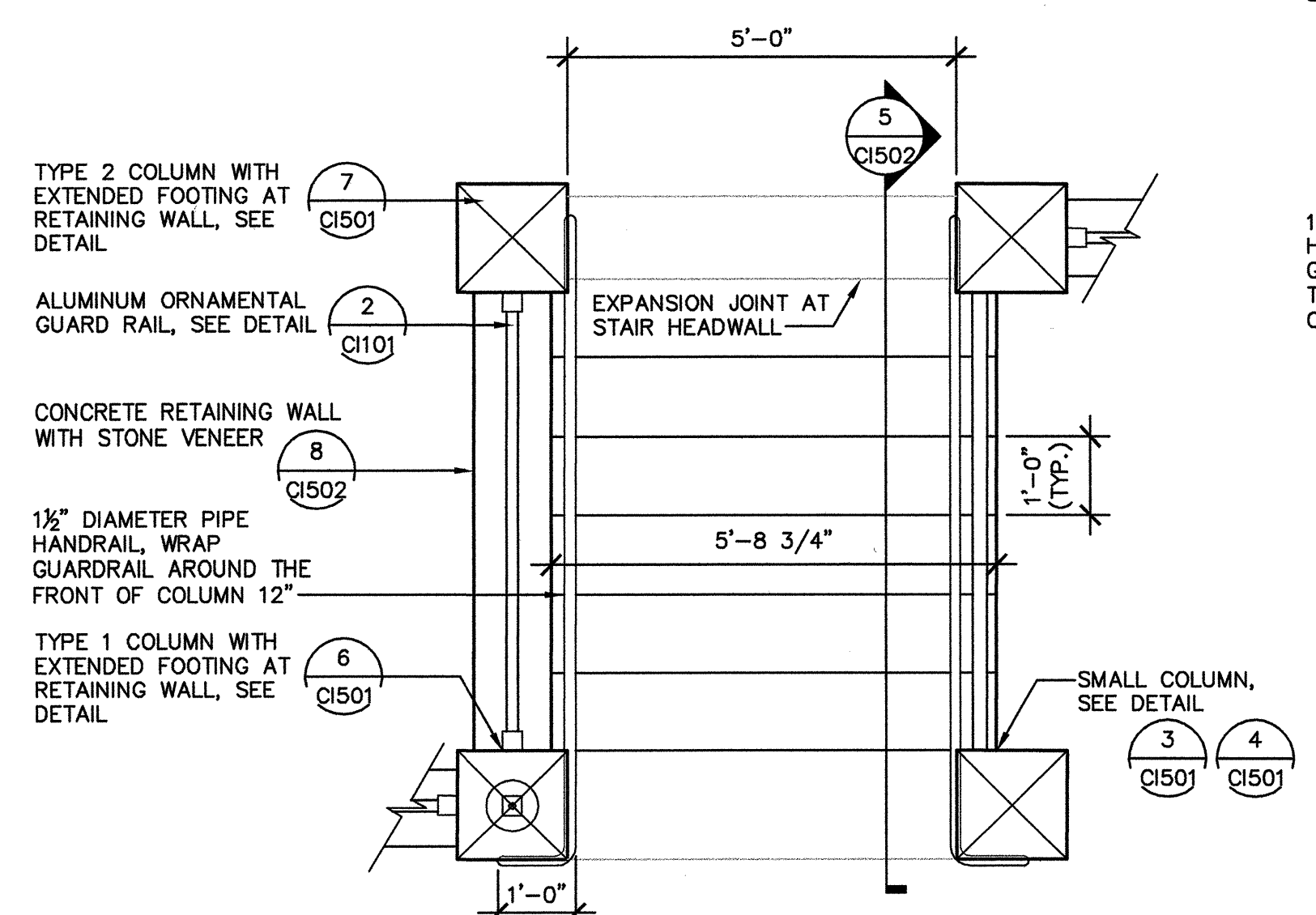
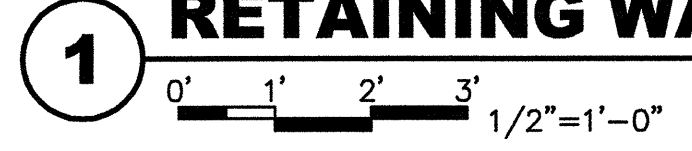
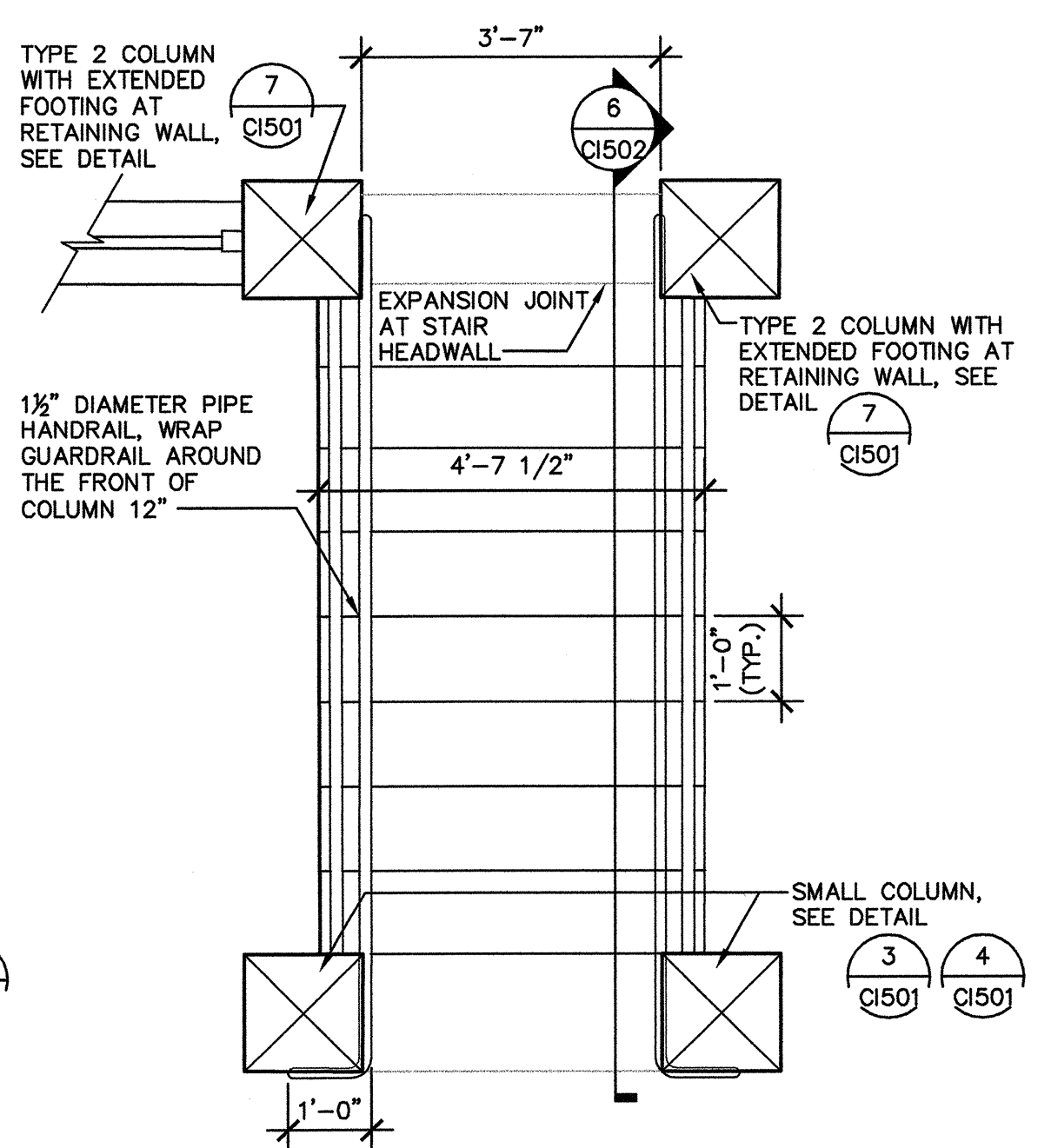
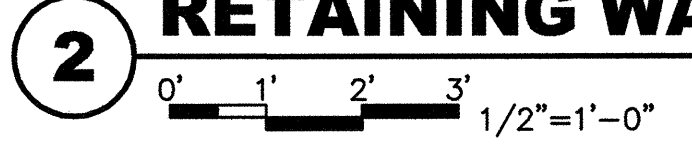


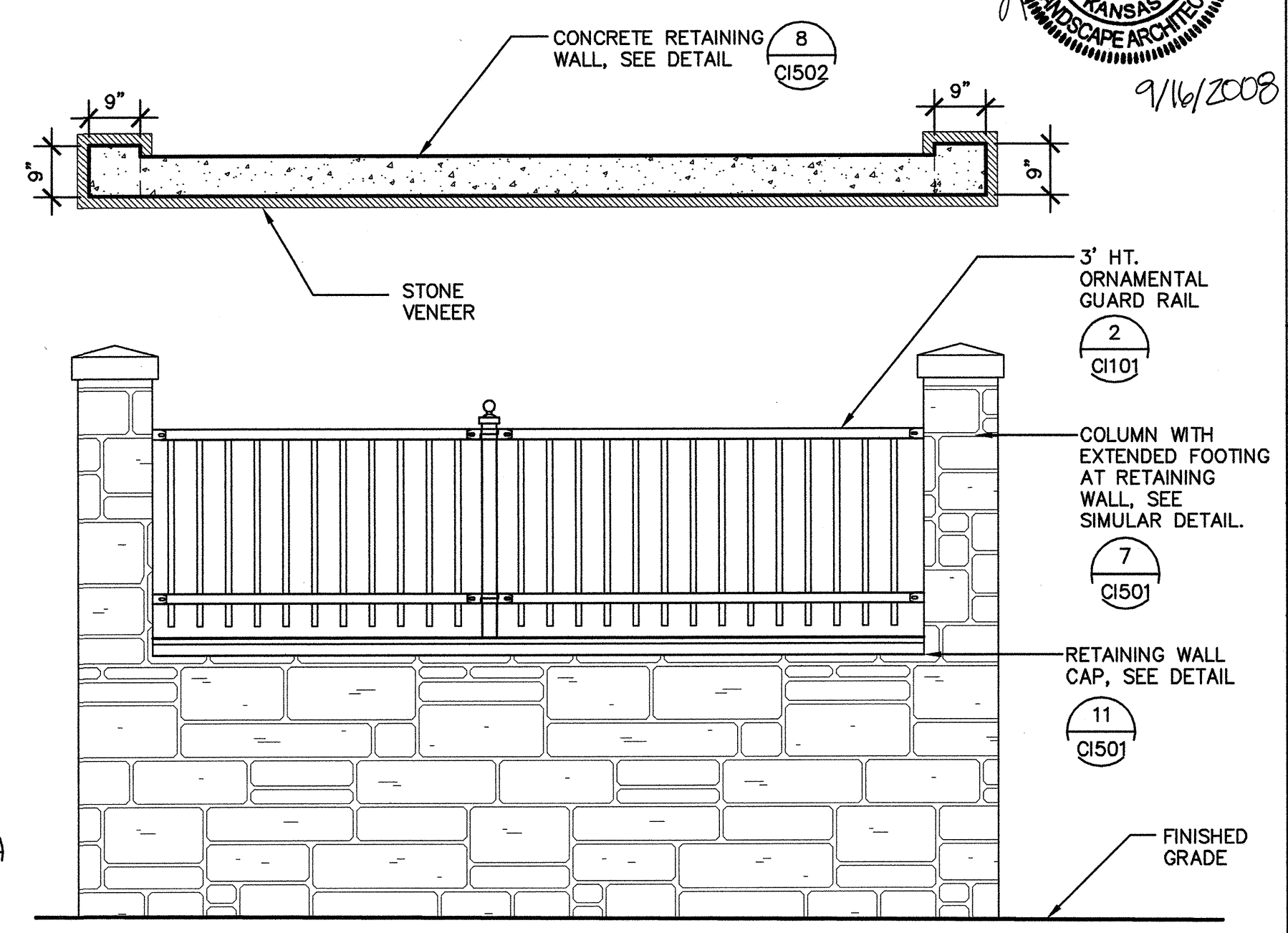
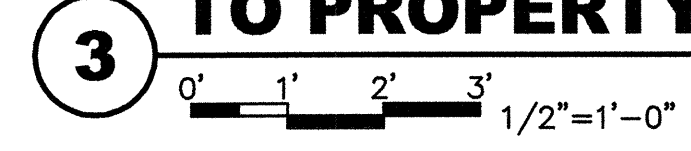
1 STAIRS AT EXISTING RETAINING WALL



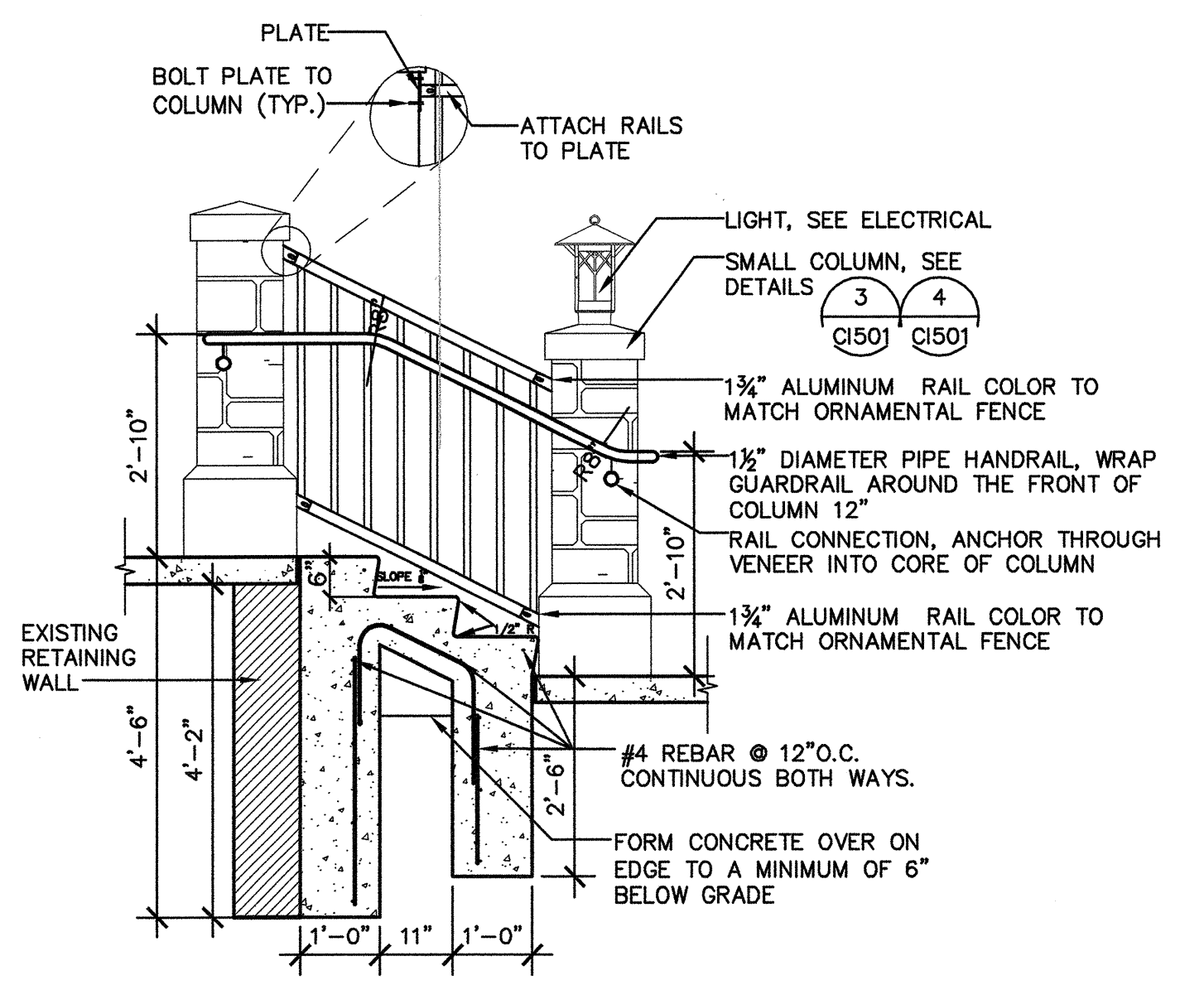
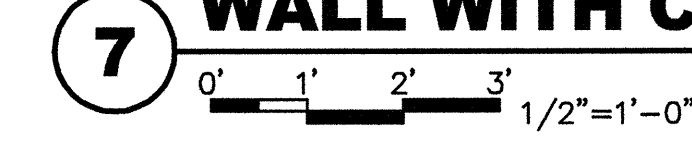
2 STAIRS AT NEW RETAINING WALL



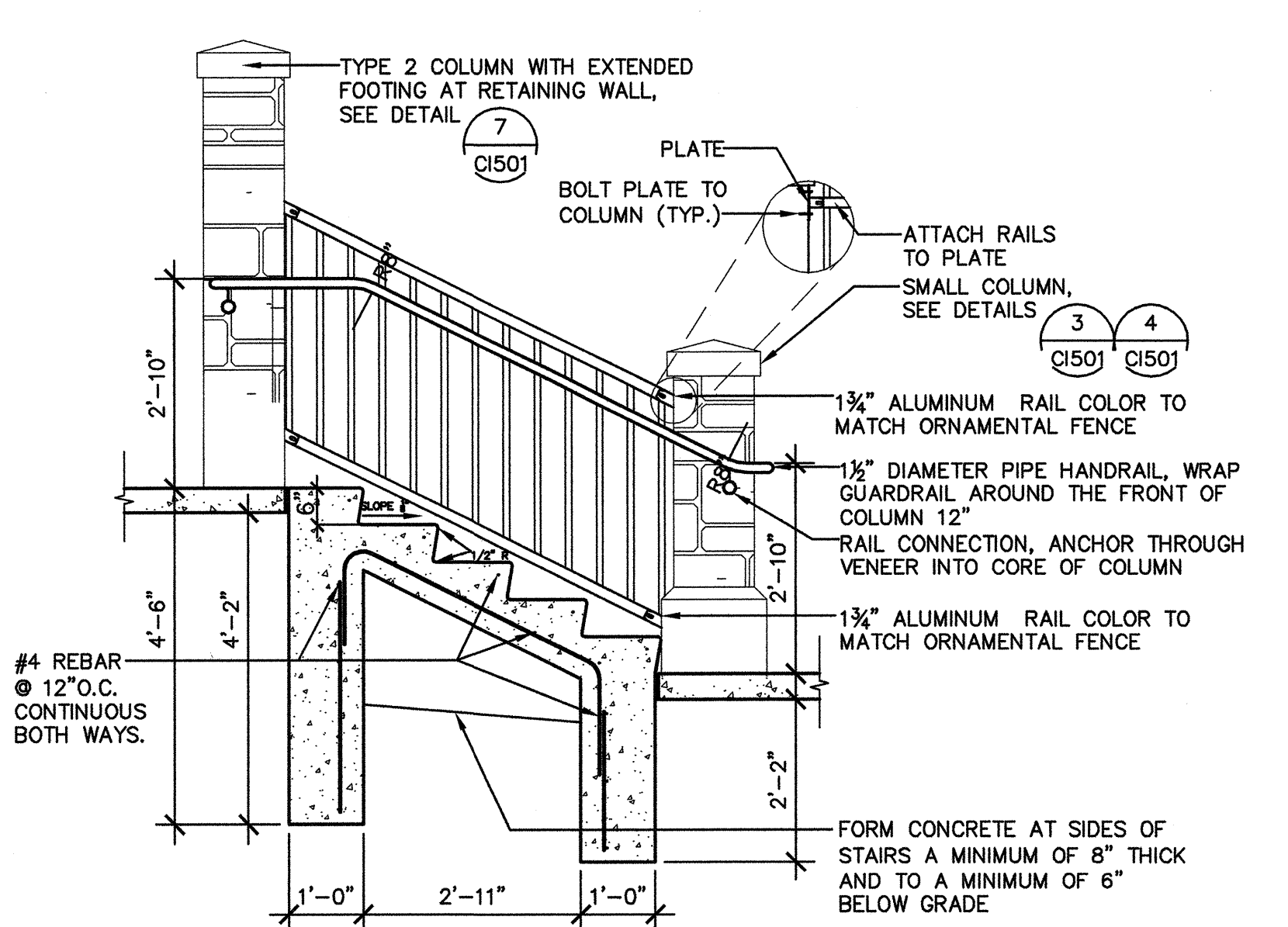
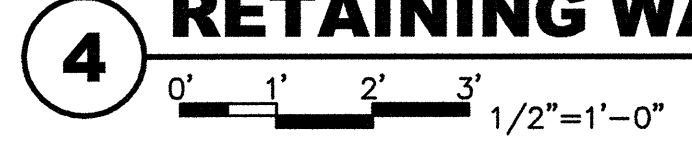
3 STAIRS ADJACENT TO PROPERTY LINE



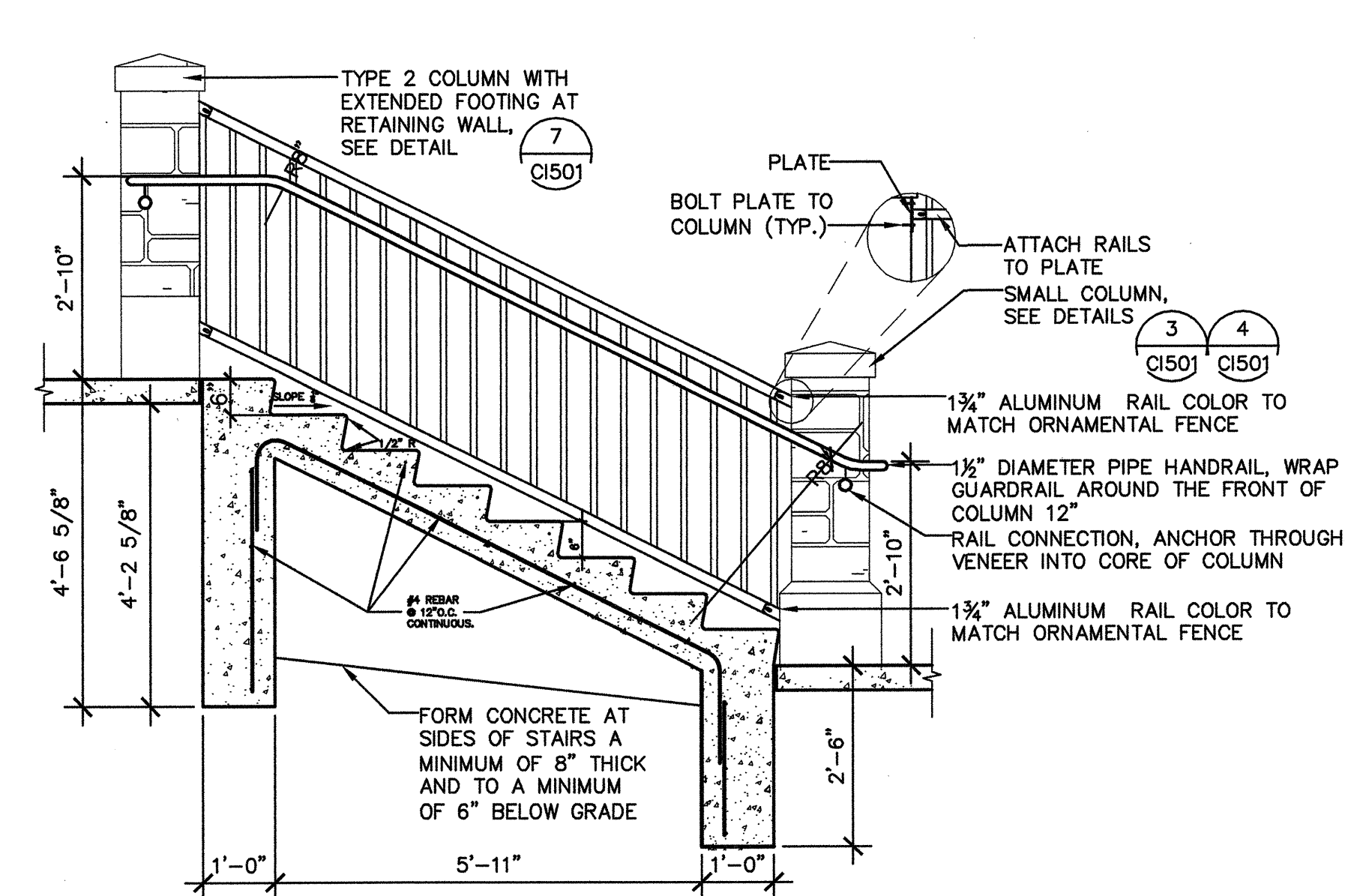
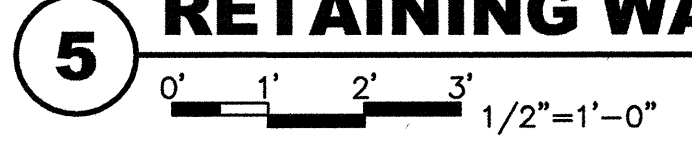
7 TYPE 2 RETAINING WALL WITH COLUMNS



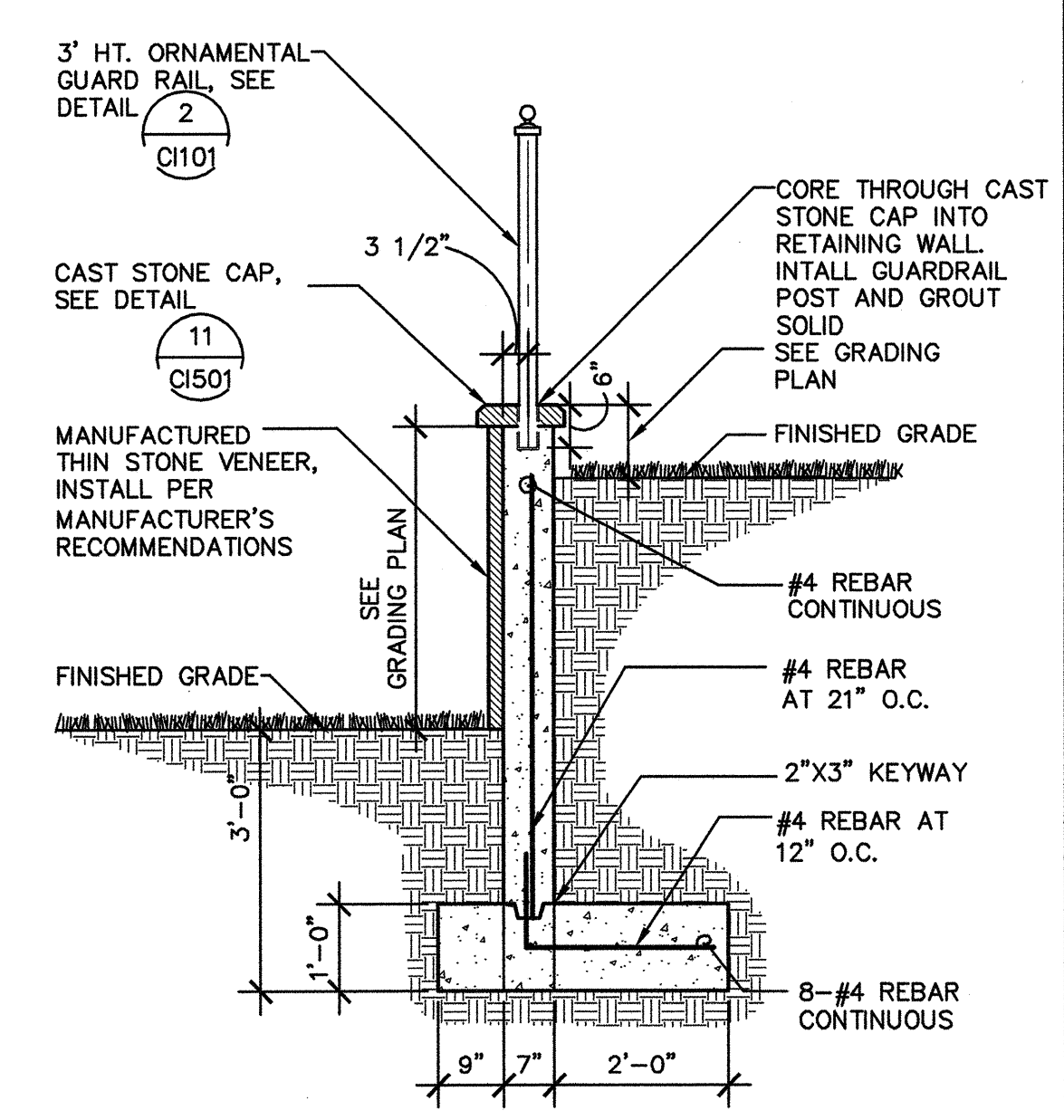
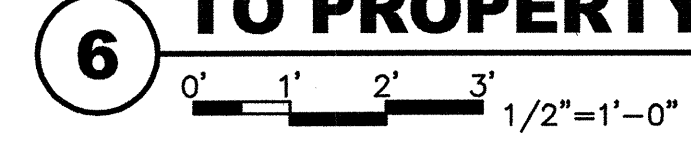
4 STAIRS AT EXISTING RETAINING WALL



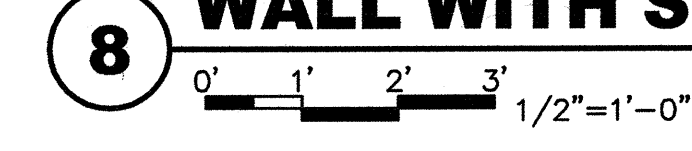
5 STAIRS AT NEW RETAINING WALL



6 STAIRS ADJACENT TO PROPERTY LINE



8 CONCRETE RETAINING WALL WITH STONE VENEER



Revision					
Approved					
By					
Date					
No.					
PARKSTONE ADDITION STREET IMPROVEMENTS VICTOR PLACE CITY OF WICHITA, KANSAS JAMES L. ARMOUR, P.E. - CITY ENGINEER Private Project # 472-85471 O.C.A. # 766166					
POE & ASSOCIATES, INC. CONSULTING ENGINEERS 590 E. Central, Suite 200 Wichita, KS 67208-6292 Phone 316/685-4114 FAX 316/685-4444					
FINAL Designed By: L. Guthridge Drawn By: L. Guthridge P.O. Job No.: 1879A Date: September 2008					

