

See Coninglen's Bk. 10

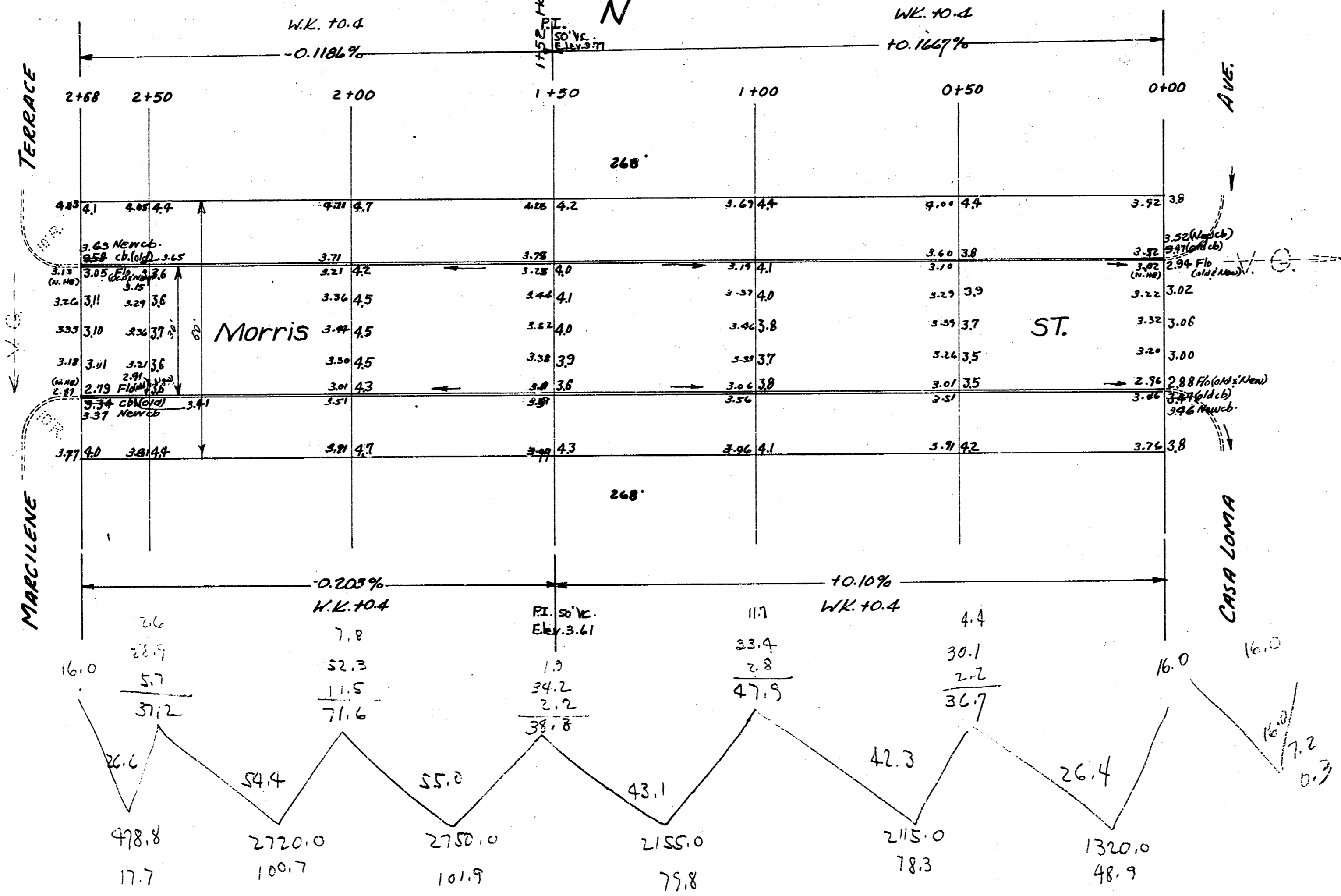
B.M. 163.34 "G" in Globe cb. S.E. cor. Morris & Marciene Terrace.

NOTE: SEE SIDEWALK @ STA 1+32.

B.M. 163.42 "G" in Globe and Rad. S.W. cor. Morris & Casa Loma.
 B.M. 163.83 N.E. Cor. Porch (Propel) on front 2nd house North of Lincoln on west side of Casa Loma.

PROPERTY

77.7
100.7
101.9
79.8
78.3
45.9
427.2 Hc%
42.7
470.0 TOTAL CU YDS.



MORRIS ST.
 E.L. MARCIENE TO W.L. CASA LOMA
 30' CONC & CB.
 CITY OF WICHITA, KANSAS
 L.K. WHITE CITY ENGINEER
 JUNE 1949 PROJ. C17-110

4 5 5 (10)