

**GENERAL NOTES**

- UNLESS SHOWN OR STATED OTHERWISE ON THESE DRAWINGS, MATERIALS AND CONSTRUCTION SHALL BE IN ACCORDANCE WITH CITY OF WICHITA CONCRETE PAVEMENT AND ASPHALTIC CONCRETE PAVEMENT SPECIFICATIONS.
- CONTRACTOR WILL BE REQUIRED TO PROVIDE A MINIMUM ADVANCE NOTICE OF SEVENTY-TWO (72) HOURS TO UTILITY COMPANIES PRIOR TO STARTING ANY EXCAVATION AS FOLLOWS:  
KANSAS ONE-CALL  
1-800-344-7233  
OR 687-2470 (LOCAL WICHITA)  
THE CONTRACTOR MUST NOTIFY THE FOLLOWING IN CASE OF AN EMERGENCY:  
SBC (TELEPHONE) 800-870-8390  
COX COMMUNICATIONS (CABLE) 262-0661  
WESTAR (ELECTRIC) 383-8600  
KANSAS GAS SERVICE (GAS) 832-3101  
CITY OF WICHITA WATER & SEWER MAINT. 262-6000  
AQUILA (GAS) 800-303-0357
- THE CONTRACTOR SHALL BE RESPONSIBLE FOR PRESERVING PROPERTY IRONS. THE CONTRACTOR WILL BE REQUIRED TO RE-ESTABLISH ANY PROPERTY IRONS WHICH ARE DAMAGED OR DESTROYED BY HIS CONSTRUCTION OPERATIONS. SUCH IRONS SHALL BE RE-ESTABLISHED BY A LICENSED LAND SURVEYOR IN ACCORDANCE WITH STATE LAWS.
- EXISTING UTILITIES AND THEIR LOCATIONS, AS SHOWN ON THE PLANS REPRESENT THE BEST INFORMATION OBTAINABLE FOR DESIGN. LOCATION INFORMATION HAS BEEN OBTAINED FROM THE VARIOUS UTILITY COMPANIES AND IS EITHER FROM COMPANY RECORD DRAWINGS OR COMPANY PROVIDED FIELD LOCATIONS. THE PLAN LOCATIONS SHOWN ARE NOT GUARANTEED. ADDITIONAL EXISTING UTILITIES MAY ALSO BE ENCOUNTERED.
- RUBBLE FROM THE REMOVAL OF MISCELLANEOUS STRUCTURES AND EXCESS EXCAVATION WHICH IS TO BE WASTED SHALL BE DISPOSED OF ON SITES TO BE PROVIDED BY THE CONTRACTOR. THESE SITES SHALL BE APPROVED BY THE ENGINEER AS TO SUITABILITY, APPEARANCE AND SITE LOCATION. LOCATIONS THAT, IN THE OPINION OF THE ENGINEER, WILL LEAVE AN UNSIGHTLY APPEARANCE WILL NOT BE APPROVED. ALL DISPOSAL SITES MUST BE APPROVED BY THE KANSAS DEPARTMENT OF HEALTH AND ENVIRONMENT. MATERIAL EITHER STOCKPILED OR DISPOSED OF IN A FLOOD PLAIN WOULD REQUIRE A KANSAS STATE BOARD OF AGRICULTURE PERMIT. ANY MATERIAL DUMPED IN WATERS OF THE UNITED STATES OR WETLANDS IS SUBJECT TO U.S. CORPS OF ENGINEERS PERMITTING REGULATIONS. ANY MATERIAL BURIED OR STOCKPILED BEYOND APPROVED CONSTRUCTION LIMITS WOULD REQUIRE ADDITIONAL ARCHAEOLOGICAL INVESTIGATIONS UNLESS BURIED IN A PREVIOUSLY APPROVED BORROW LOCATION.
- THIS PROJECT INCLUDES A CERTAIN AMOUNT OF ROLL TYPE CURB CONSTRUCTION. ROLL CURBS SHALL BE DEPRESSED THROUGH ALL DRIVEWAY OPENINGS WHEN SUCH DRIVES ARE CONSTRUCTED AS A PART OF THE PROJECT. NO MORE THAN 2 DRIVES 20 FEET IN WIDTH OR EQUIVALENT COMBINATIONS THEREOF ARE TO BE CONSTRUCTED WITH THIS PROJECT.
- TRANSITION CURB FROM FULL HEIGHT COMBINATION CURB AND GUTTER TO ROLL TYPE COMBINATION CURB AND GUTTER IS TO BE PAID AS BID FOR LINEAL FEET COMBINED CURB AND GUTTER (3 5/8" ROLL).
- A SAW CUT OF AT LEAST ONE-HALF THE DEPTH OF THE EXISTING SURFACE COURSES OR ONE-FOURTH THE DEPTH OF THE EXISTING TOTAL PAVEMENT THICKNESS SHALL BE PROVIDED AT LOCATIONS WHERE PROPOSED CONSTRUCTION ABUTS AN EXISTING SURFACE OR PAVEMENT FOR WHICH PARTIAL REMOVAL OF THAT SURFACE OR PAVEMENT IS REQUIRED. SAW JOINT TO FACILITATE REMOVAL WITHIN THREE (3) FEET OF EXISTING JOINTS WILL NOT BE PERMITTED AND FOR SUCH INSTANCES THE LIMITS OF REMOVAL SHALL EXTEND TO THE EXISTING JOINT. SUCH SAW CUTS WILL NOT BE PAID FOR DIRECTLY AND THIS COST SHALL BE CONSIDERED AS SUBSIDIARY TO THE REMOVAL OF SURFACE OR PAVEMENT.
- IMPROVEMENTS SHALL BE RESTORED WITH THE SAME GRASS/SOD AS EXISTING. RESTORATION OF DISTURBED AREAS SHALL INCLUDE, BUT NOT BE LIMITED TO, TOP SOIL PREPARATION, SEEDING, MULCH, AND/OR RESEEDING. ALL SEEDING/SODDING WORK SHALL BE IN ACCORDANCE WITH THE CITY OF WICHITA STANDARD SPECIFICATIONS AND THE CITY OF WICHITA ADMINISTRATIVE REGULATION NO. AR78 WHICH GOVERNS CLEANUP AND RESTORATION OR REPLACEMENT FOLLOWING CONSTRUCTION. ALL COSTS FOR THIS WORK SHALL BE SUBSIDIARY TO THE LUMP SUM PRICE BID FOR "SITE RESTORATION".

PROJECT LENGTH	
Crystal Beach	2,222 L.F.
Crystal Beach Cir.	394 L.F.
Boardwalk	970 L.F.
Portwest	410 L.F.
Pierport	393 L.F.

EARTHWORK SUMMARY	
EXCAVATION	2500 C.Y.
ON-SITE BORROW	620 C.Y.
COMP FILL (95%)	2600 C.Y.

\* COMPACTION FACTOR ADDED TO EARTHWORK VOLUMES

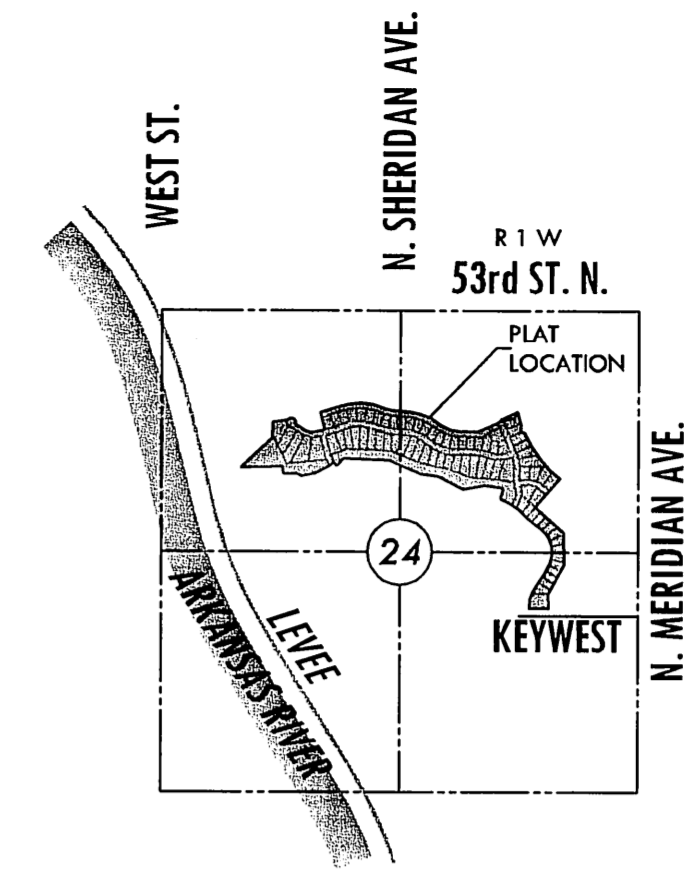
**PAVING PLANS**

TO SERVE

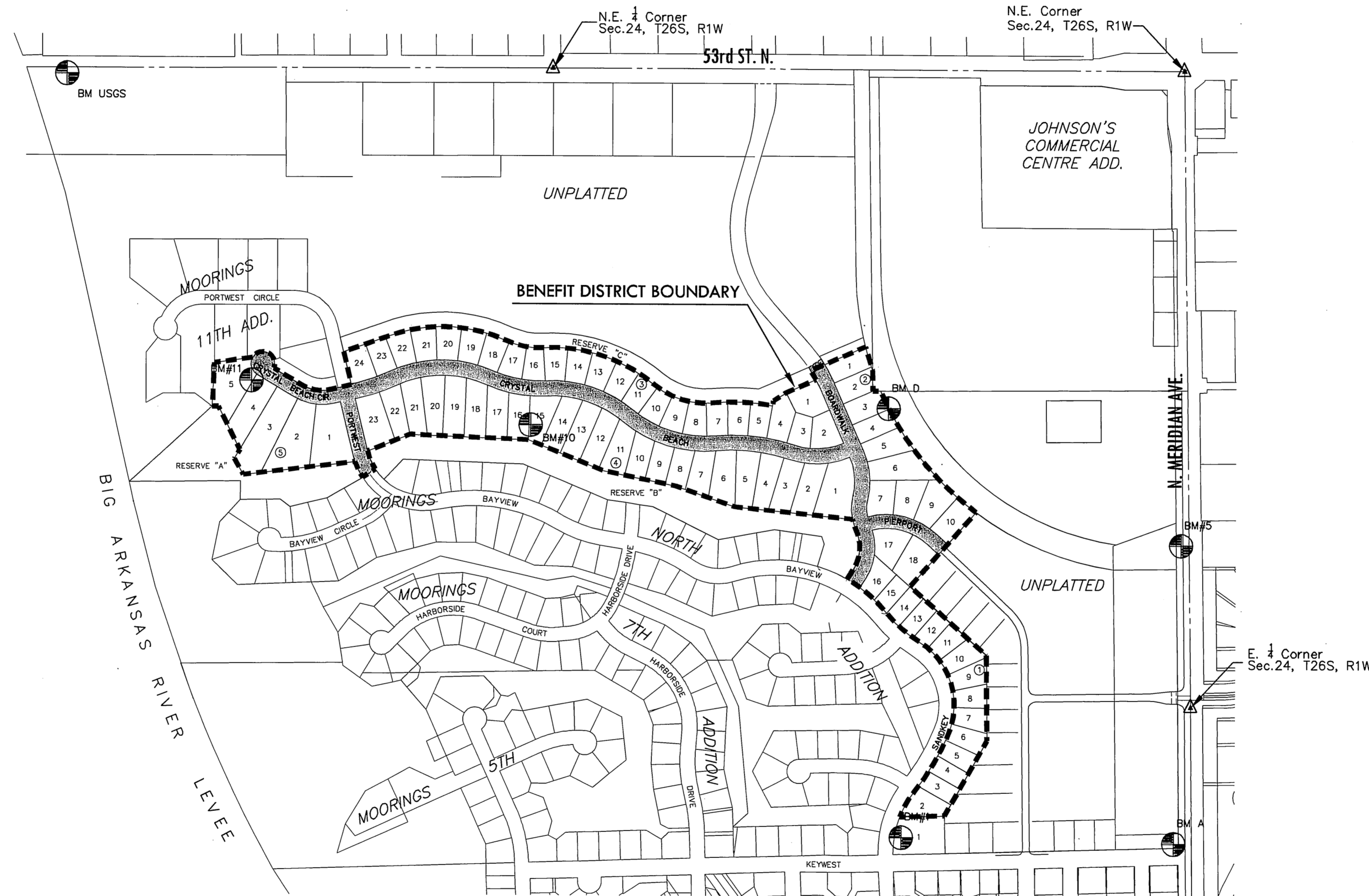
**THE MOORINGS TENTH ADDITION**

AN ADDITION TO THE CITY OF WICHITA  
SEDGWICK COUNTY, KANSAS  
JAMES L. ARMOUR, P.E., CITY ENGINEER

PROJECT NO. 472-84642  
OCA NO. 766200



**VICINITY MAP**

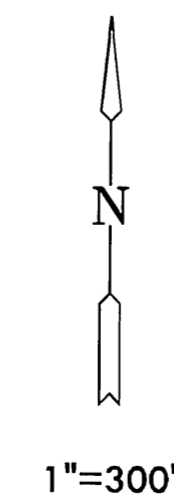


**INDEX TO DRAWINGS**

SHEET NO.	DESCRIPTION
1	TITLE SHEET
2-7	DETAILS
8-17	PAVING PLANS
18	EROSION CONTROL
19-23	EROSION DETAILS
24	BUBBLE MAP
25-35	CROSS SECTIONS
36-37	FINAL PLAT

**BENCHMARKS**

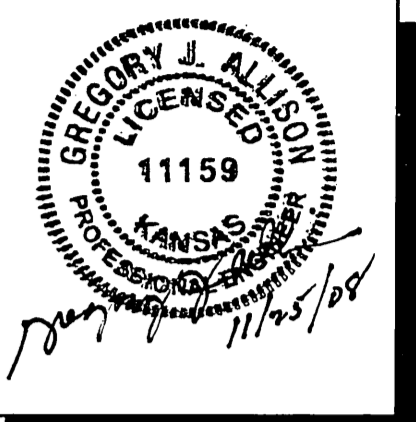
BM USGS	USGS gauging station top wall at southeast corner bridge 53rd and Arkansas River; being 29 feet south and 146 feet east of NW corner of the NW corner of Sec. 24, T26S, R1W line of Section Elev.=1353.025 (NDVD 29)
BM A	City of Wichita disc northwest corner of Meridian and Keywest Elev. = 1329.36 (NGVD 29)
BM #1	T-post 66 feet south of the northwest corner of Reserve "E" lying 21.7 feet E. of back of curb. Elev. = 1330.76 (NGVD 29)
BM D	T-post 2.8 feet south of the NE. corner of Lot 4, Block 2. Elev. = 1329.02 (NGVD 29)
BM #5	Square cut at SW. corner of RCB; 46' feet west of centerline of Meridian Ave. and 668' N. of the E. 1/4 corner, Sec. 24, T26S, R1W. Elev. = 1328.19 (NGVD 29)
BM #5	T-post S. of the NW. corner of Lot 4, Block 5, being 29 feet S. of the back of curb. Elev.=1333.635 (NDVD 29)
BM #5	T-post 100.5 feet S. of the NW. corner of Lot 15, Block 4, being 2.0 feet E. of the east line of said Lot 15. Elev.=1332.075 (NDVD 29)



PAVING CONTRACTOR WILL BE RESPONSIBLE TO OPERATE ALL WATER VALVES ON THE PROJECT, IN THE PRESENCE OF THE INSPECTOR, TO ENSURE ACCESSIBILITY TO THE VALVES, AND THAT ALL VALVES ARE LEFT IN THE "ON" POSITION WHEN THE PROJECT IS COMPLETED.

**MKEC**  
ENGINEERING  
CONSULTANTS, INC.

411 N. WEBB ROAD  
WICHITA, KS. 67206  
316 - 684 - 9600



PAVING PLANS FOR  
**THE MOORINGS TENTH ADDITION**

**TITLE SHEET**

SHEET TITLE  
**472-84642**  
PROJECT NUMBER

DESIGNED BY: DFL, DMU/DM, GJA  
DRAWN BY: \_\_\_\_\_  
CHECKED BY: \_\_\_\_\_

ISSUED  
November 2008

REVISED

SHEET NO.