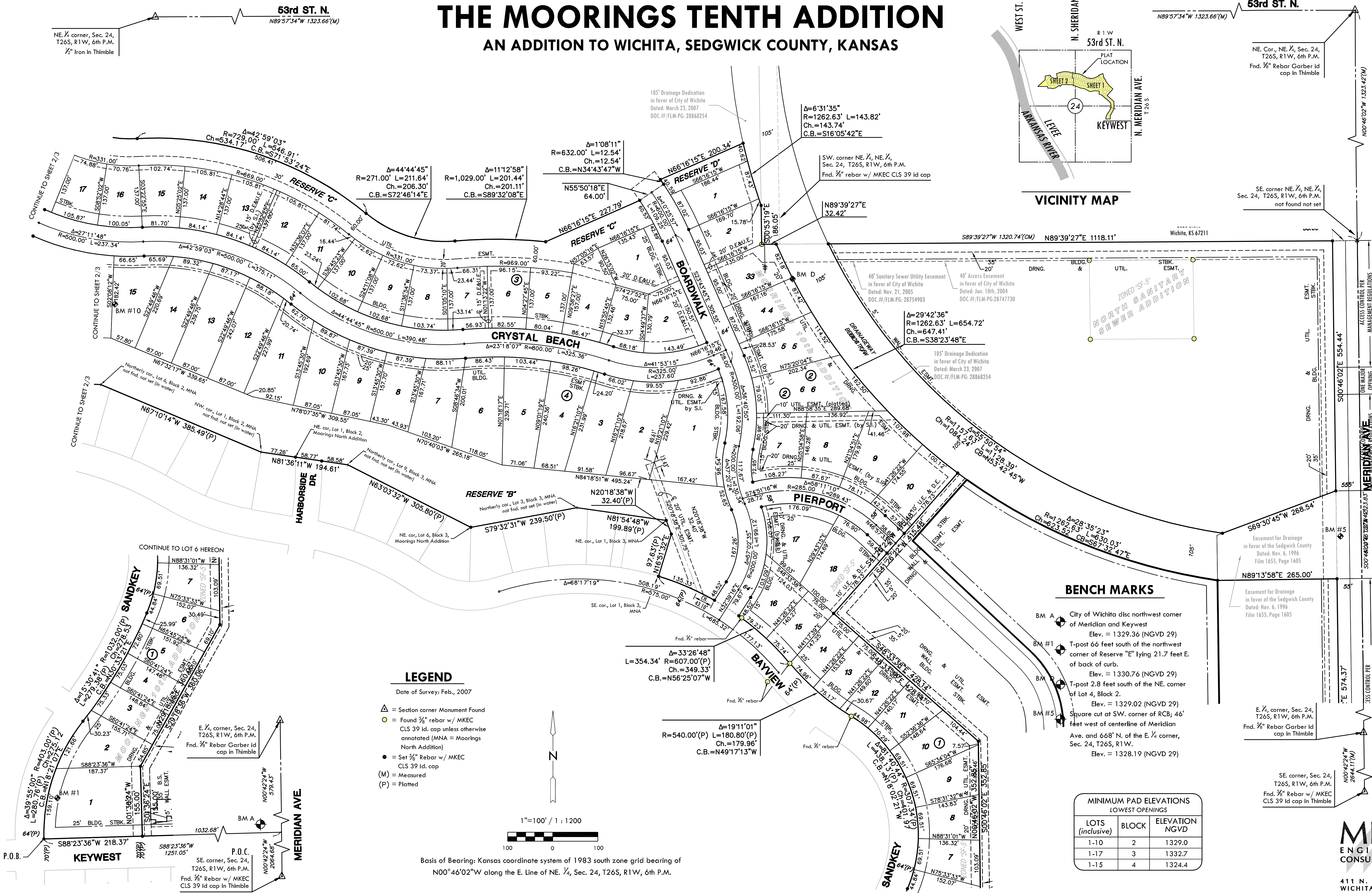
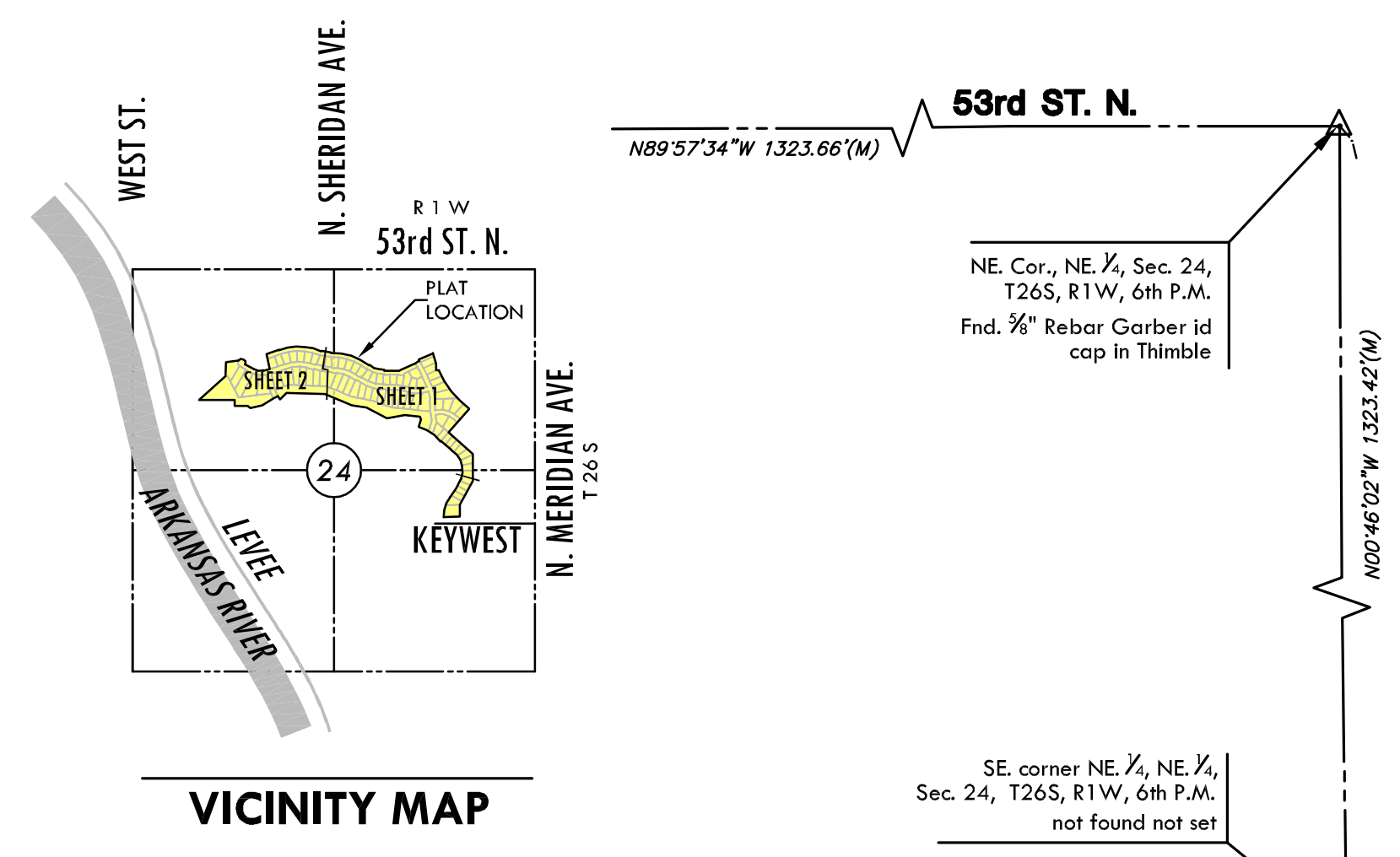


FINAL PLAT

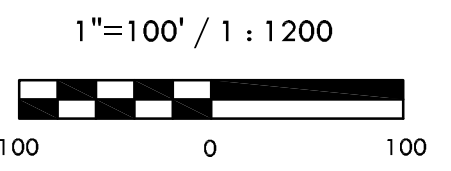
THE MOORINGS TENTH ADDITION

AN ADDITION TO WICHITA, SEDGWICK COUNTY, KANSAS



LEGEND

- Date of Survey: Feb., 2007
- Δ = Section corner Monument Found
 - \circ = Found $\frac{3}{8}$ " rebar w/ MKEC CLS 39 id. cap unless otherwise annotated (MNA = Moorings North Addition)
 - \bullet = Set $\frac{3}{8}$ " Rebar w/ MKEC CLS 39 id. cap
 - (M) = Measured
 - (P) = Platted



Basis of Bearing: Kansas coordinate system of 1983 south zone grid bearing of N00°46'02"W along the E. Line of NE $\frac{1}{4}$, Sec. 24, T26S, R1W, 6th P.M.

BENCH MARKS

- BM A City of Wichita disc northwest corner of Meridian and Keywest
Elev. = 1329.36 (NGVD 29)
- BM #1 T-post 60 feet south of the northwest corner of Reserve "E" lying 21.7 feet E. of back of curb.
Elev. = 1330.76 (NGVD 29)
- BM #2 T-post 2.8 feet south of the NE. corner of Lot 4, Block 2.
Elev. = 1329.02 (NGVD 29)
- BM #5 Square cut at SW. corner of RCB; 46' feet west of centerline of Meridian Ave. and 668' N. of the E. $\frac{1}{4}$ corner, Sec. 24, T26S, R1W.
Elev. = 1328.19 (NGVD 29)

MINIMUM PAD ELEVATIONS LOWEST OPENINGS		
LOTS (inclusive)	BLOCK	ELEVATION NGVD
1-10	2	1329.0
1-17	3	1332.7
1-15	4	1324.4



411 N. WEBB ROAD
WICHITA, KS. 67206
316-684-9600

ZONED SF-5
 UNPLATTED
 Owners: BACHMAN ENTERPRISES, INC.
 4647 N. Meridian
 Wichita, KS 67204

ZONED SF-5
 UNPLATTED
 Owners: BACHMAN ENTERPRISES, INC.
 4647 N. Meridian
 Wichita, KS 67204

ZONED SF-5
 UNPLATTED
 Owners: BACHMAN ENTERPRISES, INC.
 4647 N. Meridian
 Wichita, KS 67204

ZONED SF-5
 UNPLATTED
 Owners: BACHMAN ENTERPRISES, INC.
 4647 N. Meridian
 Wichita, KS 67204