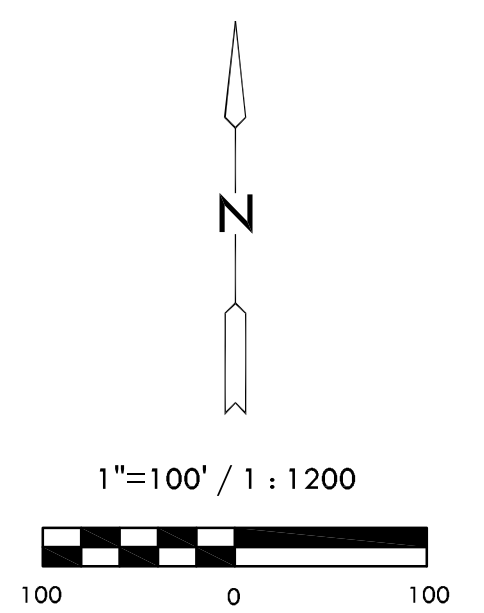
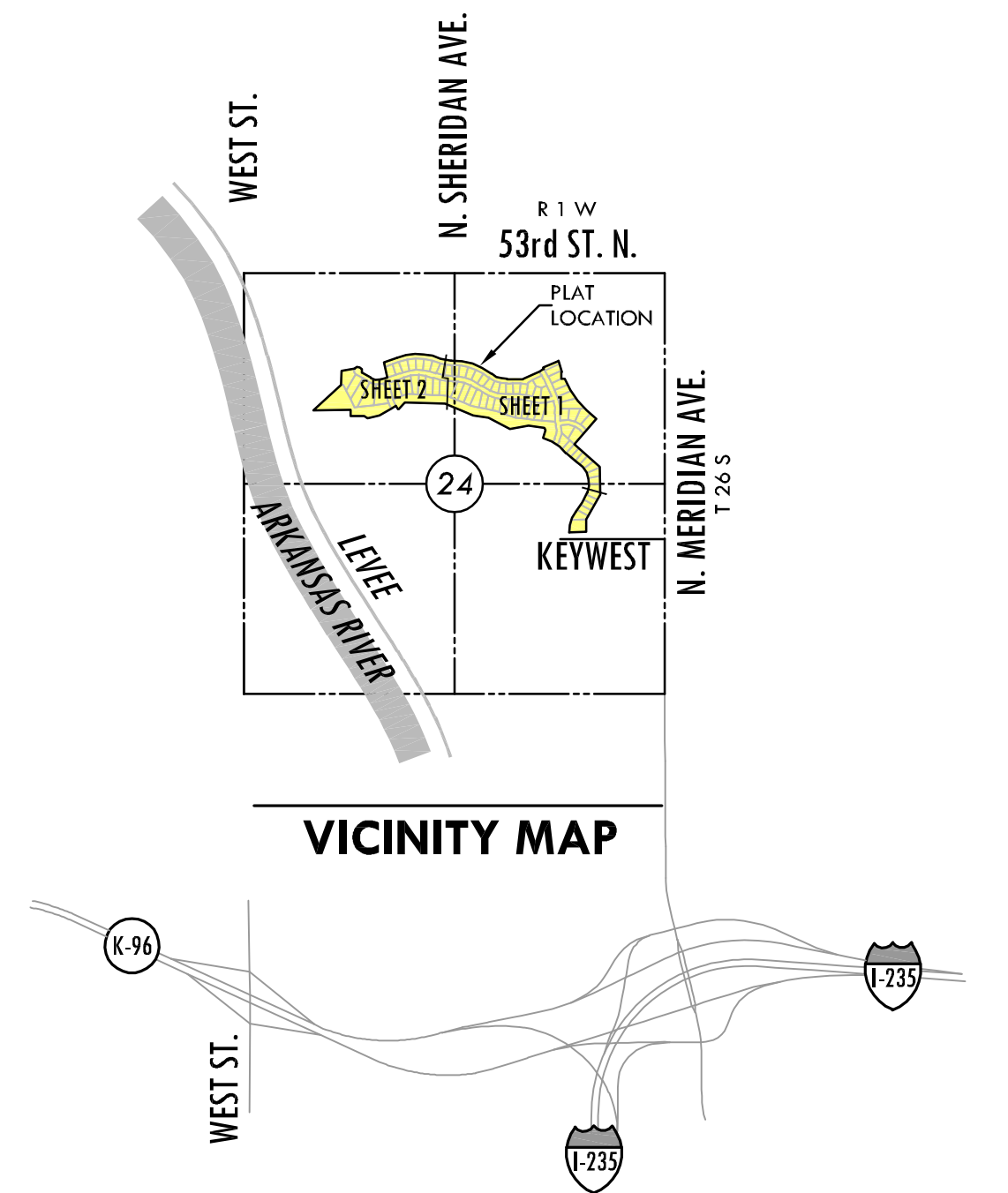


# FINAL PLAT

## THE MOORINGS TENTH ADDITION

### AN ADDITION TO WICHITA, SEDGWICK COUNTY, KANSAS



Basis of Bearing: Kansas coordinate system of 1983 south zone grid bearing of N00°46'02"W along the E. Line of NE 1/4, Sec. 24, T26S, R1W, 6th P.M.

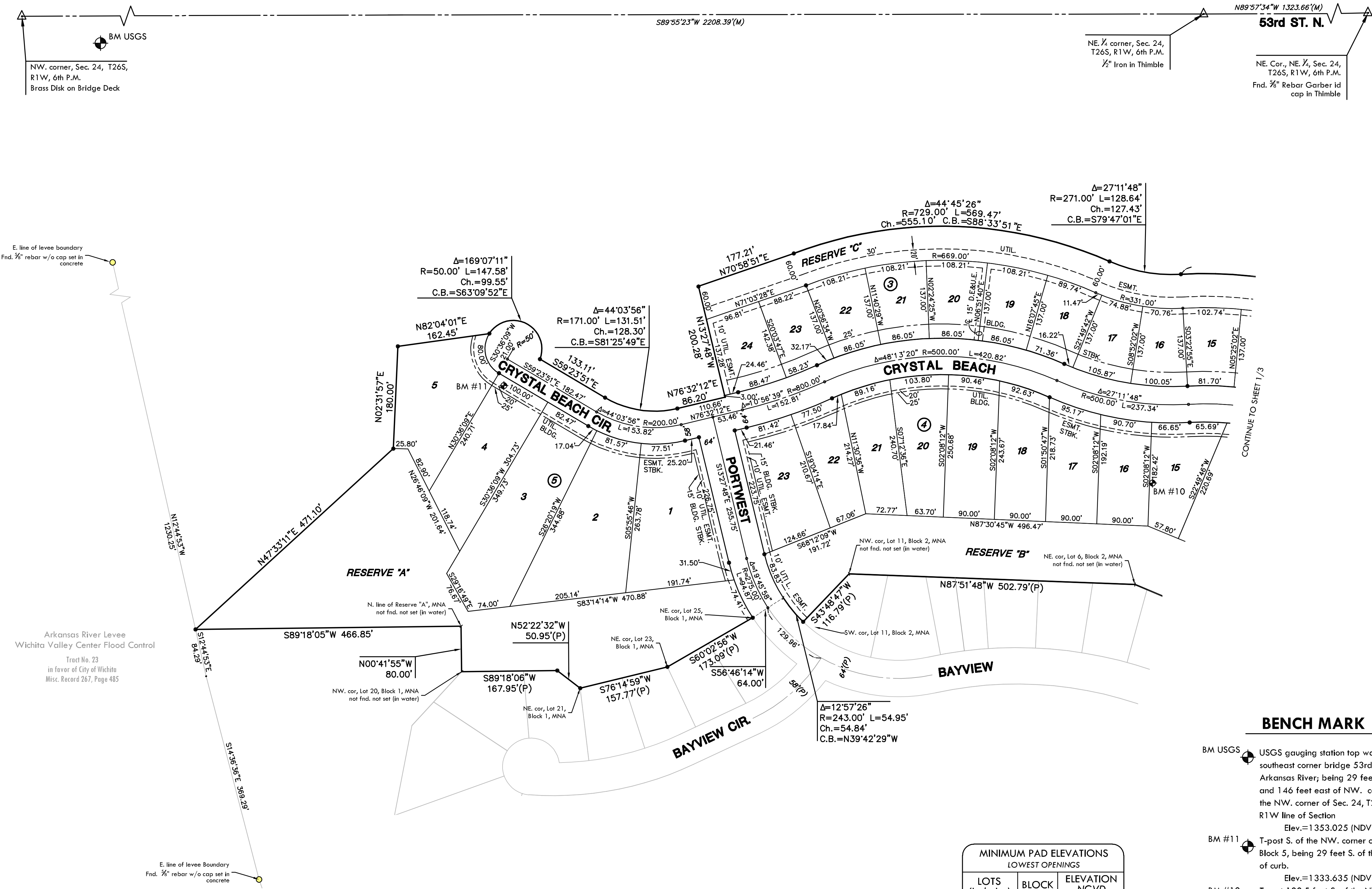
#### LEGEND

- Date of Survey: Feb., 2007
- △ = Section corner Monument Found
  - = Found 3/8" rebar w/ MKEC CLS 39 id. cap unless otherwise annotated (MNA = Moorings North Addition)
  - = Set 3/8" Rebar w/ MKEC CLS 39 id. cap
  - (M) = Measured
  - (P) = Platted
  - (CM) = Calculated from measured

#### BENCH MARK

- BM USGS: USGS gauging station top wall at southeast corner bridge 53rd and Arkansas River; being 29 feet south and 146 feet east of NW. corner of the NW. corner of Sec. 24, T26S, R1W line of Section  
Elev.=1353.025 (NDVD 29)
- BM #11: T-post S. of the NW. corner of Lot 4, Block 5, being 29 feet S. of the back of curb.  
Elev.=1333.635 (NDVD 29)
- BM #10: T-post 100.5 feet S. of the NW. corner of Lot 15, Block 4, being 2.0 feet E. of the east line of said Lot 15.  
Elev.=1332.075 (NDVD 29)

MINIMUM PAD ELEVATIONS LOWEST OPENINGS		
LOTS (inclusive)	BLOCK	ELEVATION NGVD
15-24	3	1332.7
15-23	4	1324.4
1-5	5	1324.4



BM USGS  
NW. corner, Sec. 24, T26S, R1W, 6th P.M.  
Brass Disk on Bridge Deck

NE 1/4 corner, Sec. 24, T26S, R1W, 6th P.M.  
1/2" Iron in Thimble

NE Cor., NE 1/4, Sec. 24, T26S, R1W, 6th P.M.  
Fnd. 3/8" Rebar Garber id cap in Thimble

E. line of levee boundary  
Fnd. 3/8" rebar w/o cap set in concrete

Arkansas River Levee  
Wichita Valley Center Flood Control  
Tract No. 23  
in favor of City of Wichita  
Misc. Record 267, Page 485

E. line of levee boundary  
Fnd. 3/8" rebar w/o cap set in concrete