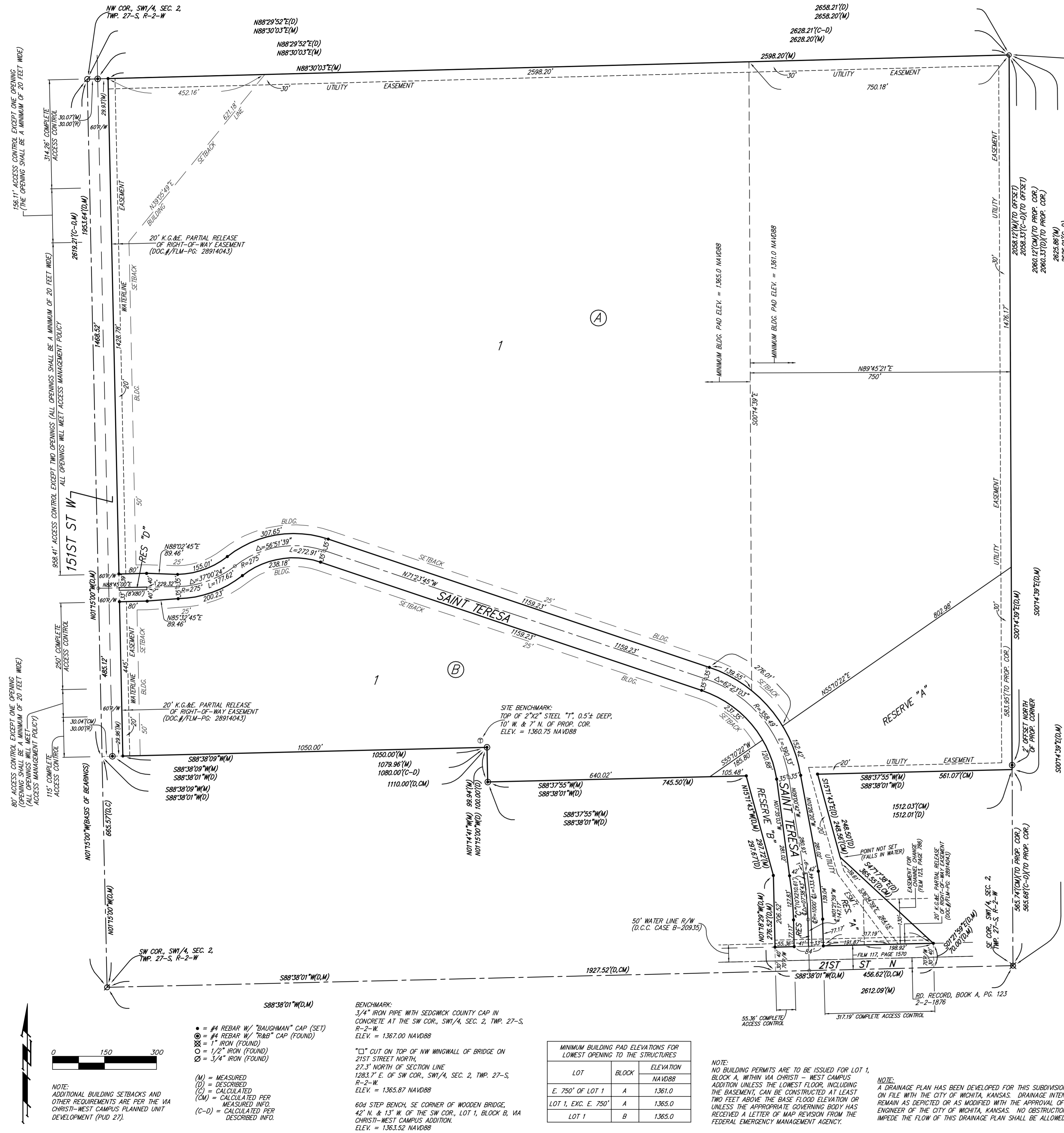


VIA CHRISTI - WEST CAMPUS ADDITION SEDGWICK COUNTY, KANSAS



State of Kansas) SS We, Baughman Company, P.A., Surveyors in
Sedgwick County) aforesaid county and state do hereby certify that we have surveyed and
platted "VIA CHRISTI - WEST CAMPUS ADDITION", Sedgwick County, Kansas
and that the accompanying plat is a true and correct exhibit of the
property surveyed, described as follows: That part of the SW 1/4 of Sec.
2, Twp. 27-S, R-2-W of the 6th P.M., Sedgwick County, Kansas described
as commencing at the SW corner thereof; thence N01°15'00"W along the
west line of said SW 1/4, 665.57 feet to the place of beginning; thence
continuing N01°15'00"W along said west line, 1953.64 feet to the NW
corner of said SW 1/4; thence N88°29'52"E along the north line of said
SW 1/4, 2658.21 feet to the NE corner of said SW 1/4; thence S00°14'39"E
along the east line of said SW 1/4, 2060.33 feet; thence S88°38'01"W
parallel with the south line of said SW 1/4, 1512.01 feet; thence
N01°15'00"W parallel with said west line, 100.00 feet; thence S88°38'01"W
parallel with said south line, 1110.00 feet to the place of beginning,
TOGETHER with that part of said SW 1/4 described as follows:
Commencing at the SW corner of said SW 1/4; thence N88°38'01"E along
the south line of said SW 1/4, 1927.52 feet; thence N01°18'29"W, 178.82
feet for a point of beginning; thence continuing N01°18'29"W, 97.70 feet;
thence N15°11'43"W, 297.67 feet to a point 565.57 feet north of the
south line of said SW 1/4 as measured parallel with the west line of said
SW 1/4; thence N88°38'01"E parallel with the south line of said SW 1/4,
205.46 feet; thence S15°11'43"E, 248.50 feet; thence S47°17'38"E, 209.10
feet to a point 178.82 feet normally distant north of the south line of
said SW 1/4; thence S88°38'01"W parallel with the south line of said SW 1/4,
344.04 feet to the point of beginning, and TOGETHER with that part of
said SW 1/4 described as follows: Commencing at the SW corner of said
SW 1/4; thence N88°38'01"E along the south line of said SW 1/4, 1927.52
feet for a point of beginning; thence N01°18'29"W, 178.82 feet; thence
N88°38'01"E parallel with the south line of said SW 1/4, 344.04 feet;
S47°17'38"E, 156.45 feet to a point 70.00 feet normally distant north of
the south line of said SW 1/4; thence S01°21'59"E perpendicular to the
south line of said SW 1/4, 70.00 feet to a point on the south line of said
SW 1/4, said point being 2384.14 feet east of the SW corner of said
SW 1/4; thence S88°38'01"W along the south line of said SW 1/4, 456.62
feet to the point of beginning, except that part deeded to Sedgwick
County for roadway on Film 117, Page 1570.

Existing public easements and dedications
being vacated by virtue of K.S.A. 12-512(b).
Baughman Company, P.A.

Michael G. Conroy, Surveyor

Know all men by these presents that we,
the undersigned, have caused the land in the surveyors certificate to be
platted into Lots, Blocks, Streets, and Reserves to be known as "VIA
CHRISTI - WEST CAMPUS ADDITION", Sedgwick County, Kansas. The utility
easements are hereby granted as indicated for the construction and
maintenance of all public utilities. The waterline easement is hereby
granted as indicated for the construction and maintenance of waterlines
and waterworks systems. The streets are hereby dedicated to and for the
use of the public. Reserve "A" is hereby reserved for bridges, entry
features, entry monuments, signage, landscaping, sidewalks, drainage
purposes, floodway, and utilities as confined to easement. Reserve "B" is
hereby reserved for bridges, entry features, entry monuments, signage,
landscaping, sidewalks, drainage purposes, and floodway. Reserves "C"
and "D" are hereby reserved for open space, landscaping, drainage
purposes, utilities, and streets. The public shall not bear the cost of any
repair or replacement of improvements within said Reserves "C" and "D"
adversely affected by street construction, repair, or maintenance.
Reserves "A" and "B" shall be owned and maintained by the owner of Lot
1, Block A, until such time as the appropriate governing body elects to
assume the responsibility for maintenance and improvements to the
drainage. No buildings shall be constructed on or placed within said
floodway, nor shall any fill, change of grade, creation of channel, or any
other work be carried on without the permission of the Engineer for said
appropriate governing body. Reserves "C" and "D" shall be owned and
maintained by the owner of Lot 1, Block A. Access controls shall be as
depicted on the face of the plat and are hereby granted to Sedgwick
County, Kansas, or the appropriate governing body. The permitted
opening locations shall be as determined by the Engineer for Sedgwick
County, Kansas or the Engineer for the appropriate governing body. The
Minimum Building Pad Elevations for the lowest opening to the structures
shall be as indicated on the face of the plat.
Via Christi Regional Medical Center, Inc.,
a not-for-profit corporation.

R. Allan Allford, Senior Vice-President

Notary Public

This plat of "VIA CHRISTI - WEST CAMPUS ADDITION", Sedgwick County, Kansas has been submitted to and approved by the Wichita-Sedgwick County Metropolitan Area Planning Commission, Wichita, Kansas.
Dated this _____ day of _____, 2008.
Wichita-Sedgwick County Metropolitan Area Planning Commission

M. S. Mitchell, Chair
John L. Schlegel, Secretary

This plat approved and all dedications shown hereon accepted by the City Council of the City of Wichita, Kansas, this _____ day of _____, 2008.

Carl Brewer, Mayor
Karen Sublett, City Clerk

This plat approved and all dedications shown hereon accepted by the Board of Commissioners of Sedgwick County, Kansas, this _____ day of _____, 2008.

Thomas G. Winters, Chairman
Don Brace, County Clerk

Reviewed in accordance with K.S.A. 58-2005 on this _____ day of _____, 2008.

Tricia L. Robello, L.S. #1246
Deputy County Surveyor
Sedgwick County, Kansas

Entered on transfer record this _____ day of _____, 2008.

Don Brace, County Clerk

State of Kansas) SS This is to certify that this plat has been
Sedgwick County) filed for record in the office of the Register of Deeds, this _____ day
of _____, 2008 at _____ o'clock _____ M; and is duly recorded.

Bill Meek, Register of Deeds
Tonya Buckingham, Deputy

LOT	BLOCK	ELEVATION NAVD88
E. 750' OF LOT 1	A	1,361.0
LOT 1, EXC. E. 750'	A	1,365.0
LOT 1	B	1,365.0

NOTE: NO BUILDING PERMITS ARE TO BE ISSUED FOR LOT 1, BLOCK A, WITHIN VIA CHRISTI - WEST CAMPUS ADDITION UNLESS THE LOWEST FLOOR, INCLUDING THE BASEMENT, CAN BE CONSTRUCTED AT LEAST TWO FEET ABOVE THE BASE FLOOD ELEVATION OR UNLESS THE APPROPRIATE GOVERNING BODY HAS RECEIVED A LETTER OF MAP REVISION FROM THE FEDERAL EMERGENCY MANAGEMENT AGENCY.

NOTE: A DRAINAGE PLAN HAS BEEN DEVELOPED FOR THIS SUBDIVISION AND IS ON FILE WITH THE CITY OF WICHITA, KANSAS. DRAINAGE INTENT SHALL REMAIN AS DEPICTED OR AS MODIFIED WITH THE APPROVAL OF THE CITY ENGINEER OF THE CITY OF WICHITA, KANSAS. NO OBSTRUCTIONS WHICH IMPEDE THE FLOW OF THIS DRAINAGE PLAN SHALL BE ALLOWED.

Baughman Company, P.A.
315 Ella St. Wichita, KS 67211 P 316-262-7271 F 316-262-0149
ENGINEERING | SURVEYING | PLANNING | LANDSCAPE ARCHITECTURE