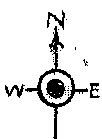


811



Scale 1 in. = 100 ft
● = Iron

EVERGREEN PLACE

SEDGWICK COUNTY, KANSAS.

State of Kansas } ss
County of Sedgwick }
I, Don C. Moehring, a Civil Engineer in and for said State and County, do hereby certify that I have surveyed and platted EVERGREEN PLACE, Sedgwick County, Kansas, into Lots, Streets and a Lane, the same being accurately set forth in the accompanying plat, the same being described as the East One Half of the West One Half of the Southwest Quarter of Section 21, Township 27 South, Range 1 West of the 6th P.M.

Don C. Moehring C.E.
Don C. Moehring, C.E., Consulting Civil Engineer

Know all men by these presents that we the undersigned property owners of the land above set forth in the Civil Engineer's Certificate have caused the same to be surveyed and platted into Lots, Streets and a Lane, the same to be known as EVERGREEN PLACE, Sedgwick County, Kansas. The Streets and the Lane are hereby dedicated to and for the use of the Public.

Harold H Paup, Inc.

Harold H Paup President.

Paul Donaldson Assistant Secretary.

State of Kansas } ss
County of Sedgwick }
Be it remembered that, on this 22nd day of Aug 1947, before me, a Notary Public in and for said State and County, came Harold H. Paup, President, and Paul Donaldson, Assistant Secretary, of Harold H. Paup, Inc., a Kansas Corporation, to me personally known to be the same persons who executed the foregoing instrument of writing and duly acknowledged the same as their voluntary act and deed, and the voluntary act and deed of said Corporation.

Rose Ina Monte Notary Public.

My Commission expires August 29, 1949

Approved by Board of County Commissioners this 9th day of Aug. 1947

E. N. Mercer County Clerk

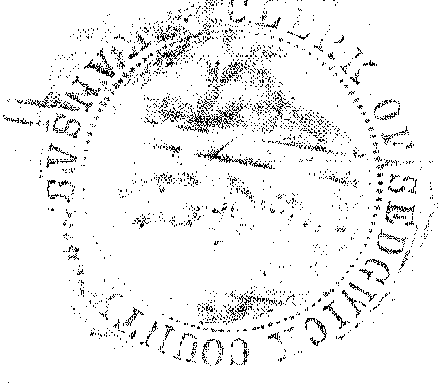
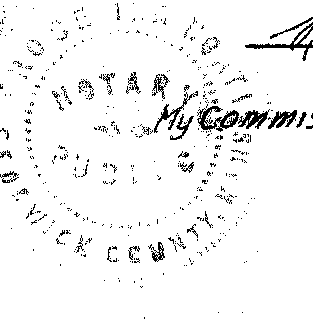
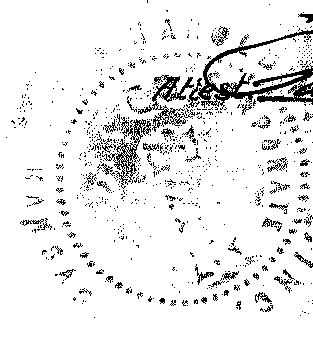
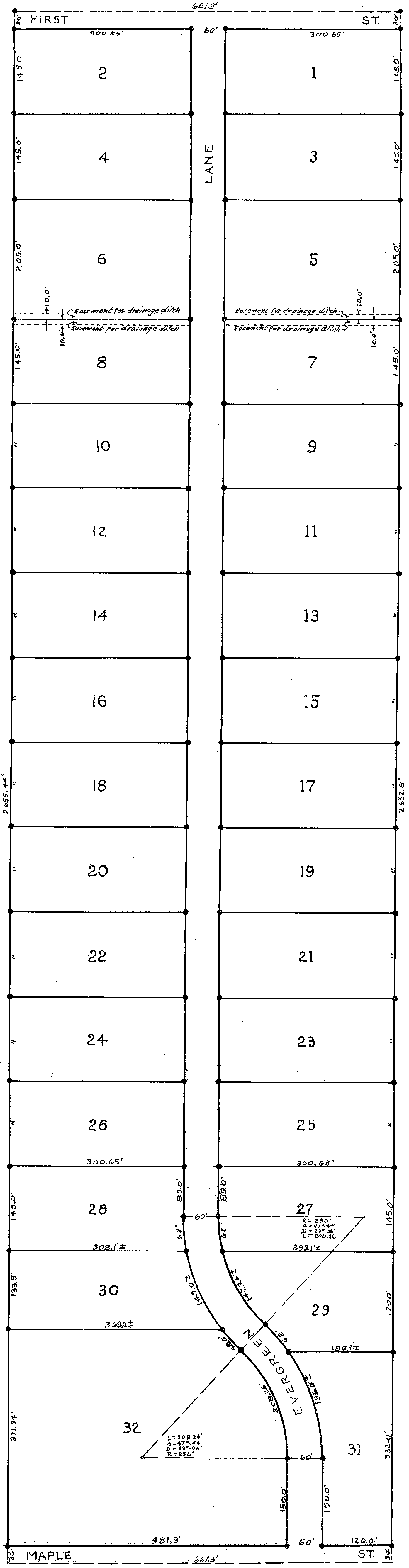
State of Kansas } ss
County of Sedgwick }
This is to certify that this instrument was filed for recording in the Register of Deeds Office on the 2nd day of August, 1947 at 11 o'clock A.M. and is duly recorded.

C. S. Rubman Register of Deeds

J. W. Clark Deputy

Entered on Transfer Record this 9th day of Aug. 1947.

E. N. Mercer County Clerk



EVERGREEN PLACE
PLAT
WICHITA, SEDGWICK COUNTY, KS
CED PROJ. NO.: 20081661
CERTIFIED ENGINEERING DESIGN, P.A.
810 WEST DOUGLAS, SUITE C
WICHITA, KANSAS 67203
PH. (316) 262-8808 FAX (316) 262-1669

DESIGNED: HOF	SCALE: NTS	SHEET
DRAWN: HOF	DATE: 06-08	2
CHECKED: HOF	CED FILE: CED-1XXX	TOTAL 33