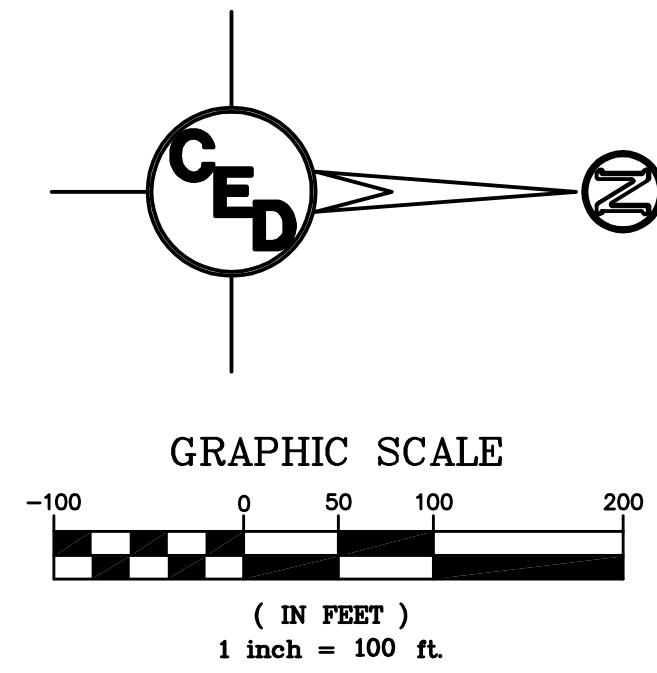


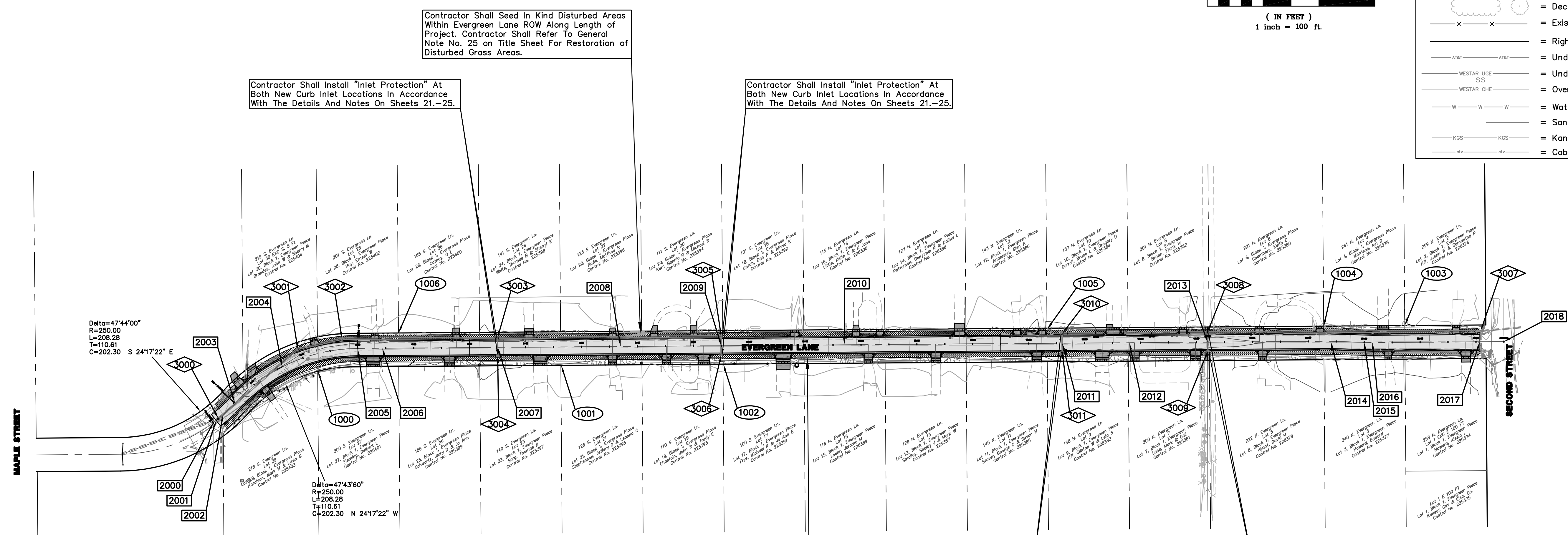
SITE STAKING & CONTROL PLAN

EVERGREEN LANE PAVING IMPROVEMENTS

WICHITA, SEDGWICK COUNTY, KANSAS



UTILITY LEGEND	
	= Fire Hydrant
	= Water Meter
	= Water Valve
	= Gas Meter
	= Gas Valve
	= Telephone Riser
	= Mailbox
	= Flag Pole
	= SS Manhole
	= SWS Manhole
	= Sign
	= Misc. Post
	= Guy Anchor
	= Power Pole
	= Light Pole
	= Deciduous Tree or Shrub
	= Existing Fence
	= Right of Way Line
	= Underground Telephone
	= Underground Electric
	= Overhead Electric
	= Water Line
	= Sanitary Sewer
	= Kansas Gas Line
	= Cable TV or Fiber Optic



1000 - Control Point

HORIZONTAL CONTROL POINTS			
Northing	Easting	Elevation	Raw Desc
1000	1975.50	3033.37	0.00
1001	2410.66	3022.85	0.00
1002	2700.56	3020.63	0.00
1003	3919.48	2951.70	0.00
1004	3774.75	2952.71	0.00
1005	3280.16	2957.69	0.00
1006	2119.62	2964.98	0.00

2000 - Street Staking Point

EVERGREEN LANE STAKING POINTS			
Northing	Easting	Elevation	Raw Desc
2000	1788.36	3125.54	0.00
2001	1793.50	3121.57	0.00
2002	1805.75	3111.29	0.00
2003	1826.76	3090.53	0.00
2004	1912.09	3025.36	0.00
2005	2046.36	2992.52	0.00
2006	2086.88	2992.22	0.00
2007	2296.88	2990.67	0.00
2008	2516.87	2989.05	0.00
2009	2696.86	2987.72	0.00
2010	2916.86	2986.10	0.00
2011	3306.85	2983.22	0.00
2012	3426.84	2982.33	0.00
2013	3566.83	2981.30	0.00
2014	3786.87	2979.68	0.00
2015	3846.80	2981.64	0.00
2016	3861.69	2982.12	0.00
2017	4053.85	2980.71	0.00
2018	4096.89	2980.39	0.00

3000 - Storm Water Sewer No.1 Staking Point

HORIZONTAL CONTROL POINTS			
Northing	Easting	Elevation	Raw Desc
3000	1797.35	3118.23	0.00
3001	1939.34	2993.31	0.00
3002	2018.46	2975.38	0.00
3003	2299.26	2975.65	0.00
3004	2294.27	2975.69	0.00
3005	2299.41	3004.15	0.00
3006	2294.54	3004.19	0.00
3007	2699.25	2972.70	0.00
3008	2694.26	2972.74	0.00
3009	2699.48	3002.70	0.00
3010	2694.49	3002.74	0.00
3011	4055.30	2961.52	0.00
3012	3569.23	2966.28	0.00
3013	3564.23	2966.32	0.00
3014	3569.44	2996.28	0.00
3015	3564.45	2996.32	0.00
3016	3309.23	2968.20	0.00
3017	3304.24	2968.24	0.00
3018	3309.46	2998.20	0.00
3019	3304.46	2998.24	0.00

Contractor Shall Install "Inlet Protection" At Both New Curb Inlet Locations In Accordance With The Details And Notes On Sheets 21.-25.

Contractor Shall Install 3375 S.Y. of 8" Wide "Back of Curb Protection" (Curlex 1 Excelsior Erosion Blanket) Behind Back of Curb Along the Length of Project. Contractor Shall Refer To General Note No. 25 on Title Sheet For Restoration of Disturbed Grass Areas. (See BMP Detail Sheet's 21-25 for Details.)

- BENCHMARKS:**
- SBM #1 - N. Cap Bolt on Top FH SE Cor. Evergreen Ln. & Evergreen Ct. Elev.= 1330.81
 - SBM #2 - RR Spike In PP E. Side of Evergreen Ln. Between House #'s 156 & 140 Elev.= 1330.43
 - SBM #3 - RR Spike In PP W. Side of Evergreen Ln. Between House #'s 127 & 143 Elev.= 1331.83
 - SBM #4 - "□" Cut @ Front Top of Inlet N. Side of 2nd St. E. Edge of Evergreen Ln. Elev.= 1328.47

SURVEY DISCLAIMER:
TOPOGRAPHIC SURVEY USED IN PREPARING PLANS WAS PROVIDED BY GARBER SURVEYING SERVICE, (620) 665-7032, 423 WEST FIRST AVE., HUTCHINSON, KS. ENGINEER DOES NOT GUARANTEE SURVEY ELEVATIONS FOR ACCURACY. CONTRACTOR SHALL VERIFY ELEVATIONS AND NOTIFY ENGINEER OF ANY DISCREPANCIES.

- Proposed 5" A.C. Pavement on 5" Crushed Rock Base
- Proposed Concrete Curb & Gutter / Concrete Drive Entrance
- Proposed 8" Wide "Back of Curb Protection" (Curlex 1 Excelsior Erosion Blanket)

EVERGREEN LANE
SITE/STAKING PLAN
WICHITA, SEDGWICK COUNTY, KS
CED PROJ. NO.: 20081661

CERTIFIED ENGINEERING DESIGN, P.A.

810 WEST DOUGLAS, SUITE C
WICHITA, KANSAS 67203
PH.(316)262-8808 FAX.(316)262-1669

DESIGNED: HDF	SCALE: 1"=100'	SHEET 3
DRAWN: JDT	DATE: 06-08	TOTAL 33
CHECKED: HDF	CED FILE: CED-1XXX	

S:\Working\Draws\2008\20081661\Site Staking\20081661_Site Staking.dwg, 11/28/2008 4:28:07 PM, 227 x 357, 22418