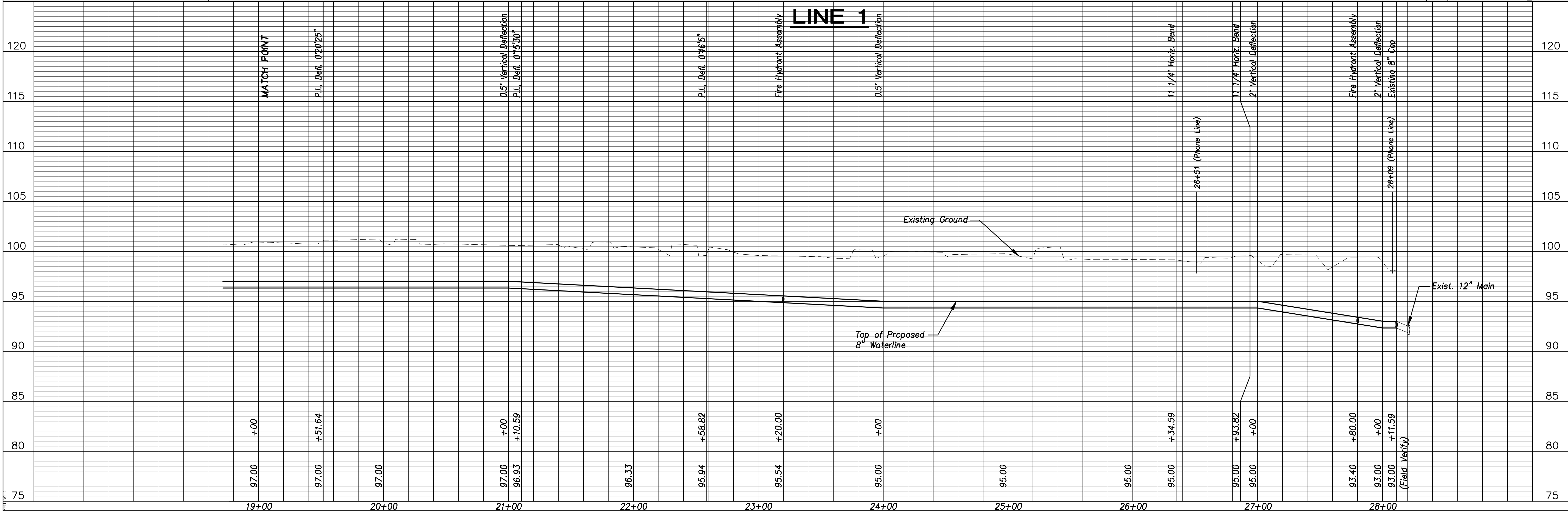


NOTE:  
All driveway culverts & mailboxes in direct conflict with construction shall be removed and replaced in kind.

UNLESS OTHERWISE NOTED, ELEVATIONS SHOWN ARE TO TOP OF PIPE



No.	Date	By	Approved	Revision

OATVILLE ADDITION  
WATER DISTRIBUTION SYSTEM IMPROVEMENTS  
LINE 1  
CITY OF WICHITA, KANSAS  
JAMES ARMOUR, P.E. - CITY ENGINEER  
Proj.# 448-90072 O.C.A.# 73264

**POE & ASSOCIATES, INC.**  
CONSULTING ENGINEERS  
5940 E. Central, Suite 200 • Wichita, KS 67208-4292  
Phone 316/685-4114 • FAX 316/685-4444

**FINAL**  
Designed By: J. Dickman  
Drawn By: M. Tucker  
Poe Job No.: 1805A  
Date: May 2008  
Sheet 6 of 15