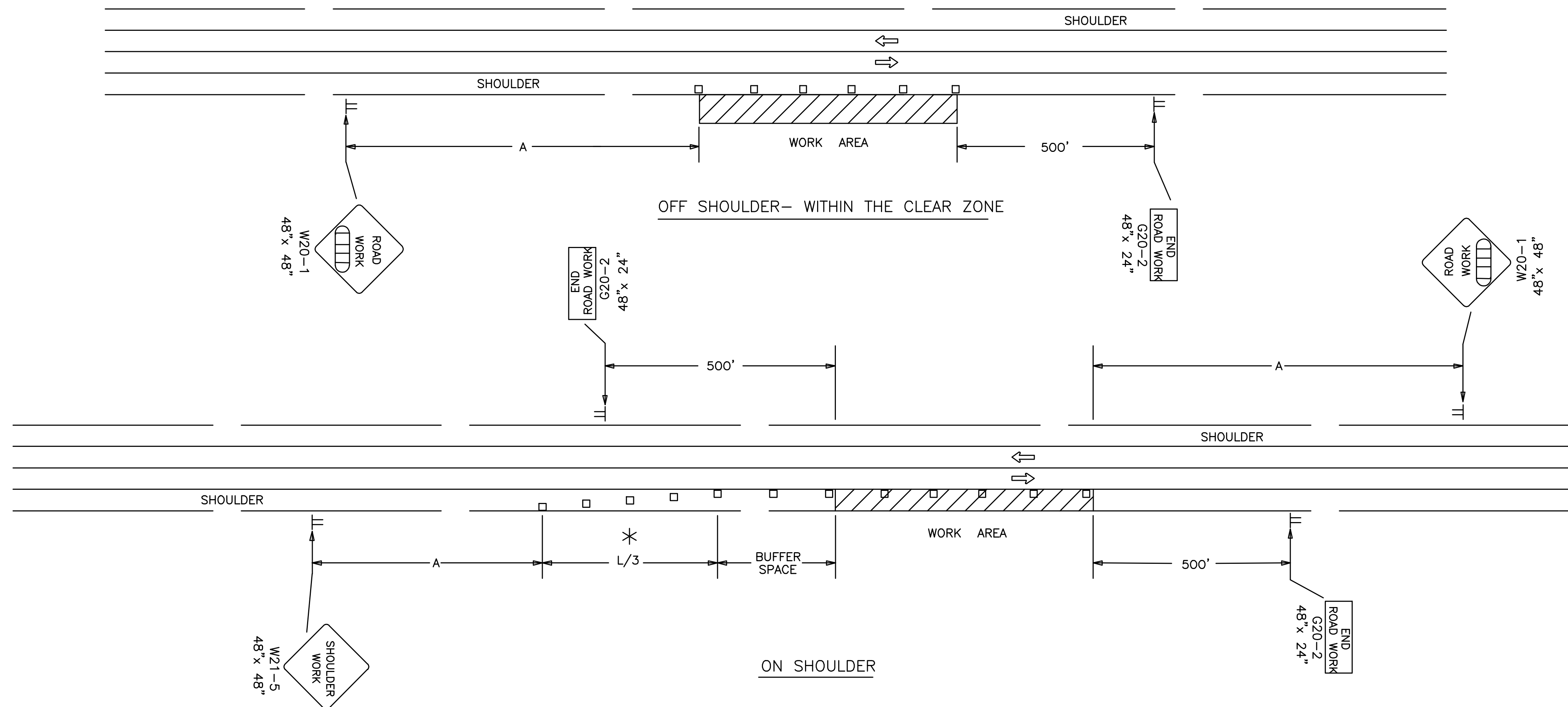


REFER TO STD. TE710 FOR ADDITIONAL INFORMATION ON TRAFFIC CONTROL SIGNS AND SIGN SPACING.
 REFER TO STD. TE702 FOR INFORMATION ON TAPERS AND CHANNELIZING DEVICES.
 REFER TO STD. TE700 FOR LENGTH OF BUFFER SPACE.

NOTE: NO TRAFFIC CONTROL IS REQUIRED IF THE WORK AREA IS LOCATED OUTSIDE OF THE CLEAR ZONE.

FOR OPERATIONS OF 60 MINUTES OR LESS, ALL SIGNS AND CHANNELIZING DEVICES MAY BE ELIMINATED IF A VEHICLE WITH AN ACTIVATED FLASHING OR REVOLVING YELLOW LIGHT IS USED.



WHEN CONCRETE SAFETY BARRIER IS USED, CHANNELIZING DEVICES ARE NOT NEEDED ALONG THE TANGENT BARRIER SECTION.

□ Channelizing Device
 ▨ AHEAD, 1500 FT OR 1 MILE

* OMIT TAPER IF PAVED SHOULDER IS LESS THAN 8' WIDE.

NO.	DATE	REVISIONS	BY	APP'D
3	12-29-05	UPDATED END ROAD WORK SIGN DESIGNATION	M.B.	A.A.A.
2	11-19-03	CHANGED BORDER	B.H.	S.A.B.
1	9-26-02	REMOVED G20-1 SIGNS	M.H.	S.A.B.

KANSAS DEPARTMENT OF TRANSPORTATION
 TYPICAL TRAFFIC CONTROL
 WORK ON OR NEAR THE SHOULDER
 UNDIVIDED HIGHWAY (2 OR 4 LANE)

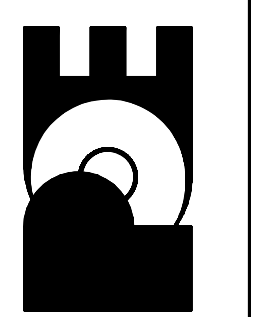
TE720 9/1/00

DESIGNED	APP'D	QUANTITIES	TRACED
L.E.R.	Michael P. McKenna		
DESIGN CK.	B.A.H.	QUAN. CK.	TRACE CK.

No.	Date	By	Approved	Revision

OATVILLE ADDITION
 WATER DISTRIBUTION SYSTEM IMPROVEMENTS
 TRAFFIC CONTROL DETAILS
 CITY OF WICHITA, KANSAS
 JAMES ARMOUR, P.E. - CITY ENGINEER
 Proj.# 448-90072 O.C.A.# 735264

POE & ASSOCIATES, INC.
 CONSULTING ENGINEERS
 5940 E. Central, Suite 200 • Wichita, KS 67208-4242
 Phone 316/685-4114 • FAX 316/685-4444



FINAL
 Designed By: J. Dickman
 Drawn By: M. Tucker
 P.O. Job No.: 1805A
 Date: May 2008
 Sheet
 11 of 15