

Sta. 0+00, Begin Line 1
Begin construction of 15"
RCP with end section.
Install 6.0 s.y. 5"x9"
Crushed Stone Rip-rap
around end section.

CAUTION!
Ex. Undgr.
Gas Line

Construct 4' Wide (Typ.)
Concrete Flume (240 L.F.)
- Per Detail, Site Plans.

CAUTION!
Ex. Sanitary
Sewer Line

CAUTION!
Ex. Undgr.
CATV Line

CAUTION!
Ex. Undgr.
Gas Line

Site benchmark set in south face of
overhead electric pole north of
Kellogg Drive and east of proposed
entry drive into Suzuki Car Dealership.
Elev. = 1361.61

SCALE:
1" = 20' HORIZONTAL
• = IRON

KELLOGG FRONTAGE
ROAD (U.S. 54)

Sta. 0+07, Line 1
Const. Std. Drop Inlet
(2' x 4')
Top Elev. = 1359.50

Sta. 0+18.60, Line 1
Construct Std. Shallow Manhole
(4' Dia.)
Top Elev. = 1359.80

Sta. 2+57.83, End Line 1
End construction of 15"
RCP with end section.
Install 5.0 s.y. 5"x9"
Crushed Stone Rip-rap
around end section.

POND DATA:
STATIC POOL ELEVATION: 1358.50 MSL
BOTTOM ELEVATION: 1358.50 MSL
100 YEAR DESIGN WATER SURFACE: 1361.60 MSL

NOTES:

1. All of the area around the Proposed Pond, from Property Line to Pavement, bottom and sides, shall be seeded and mulched as follows: (Permanent Seeding)

SEED -- Kansas Premium Fescue Blend; 8#/1000 Sq. Ft.

FERTILIZER -- 12-24-12 Ratio at 350 Lbs./Ac.

MULCH -- 2 Tons Prairie Hay / Acre

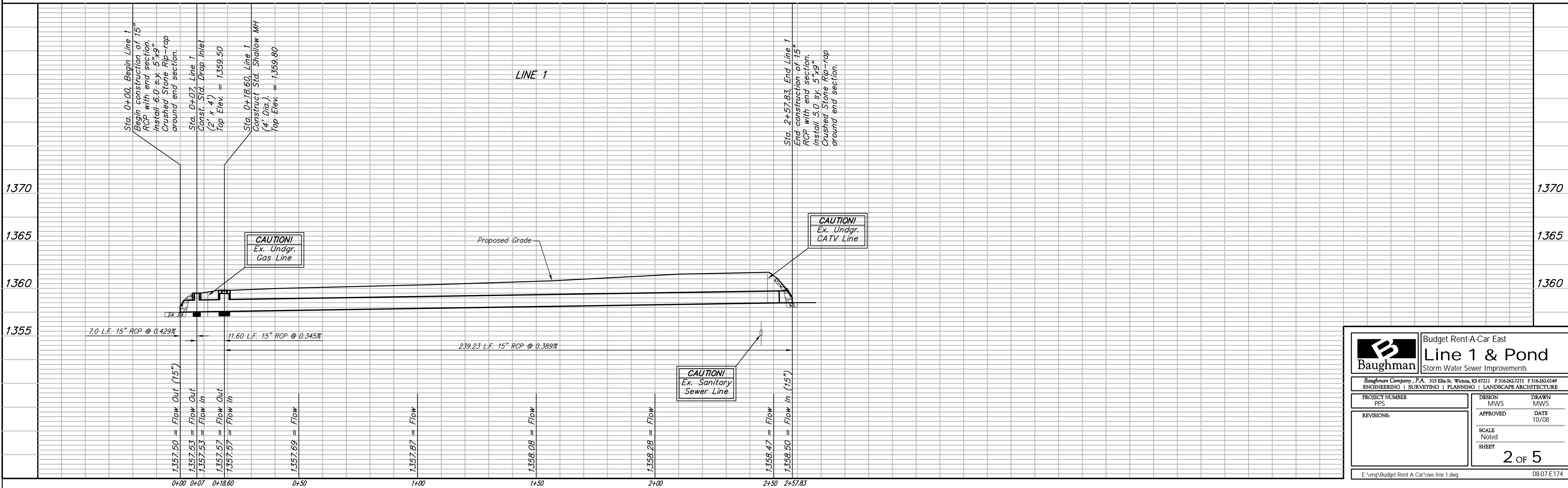
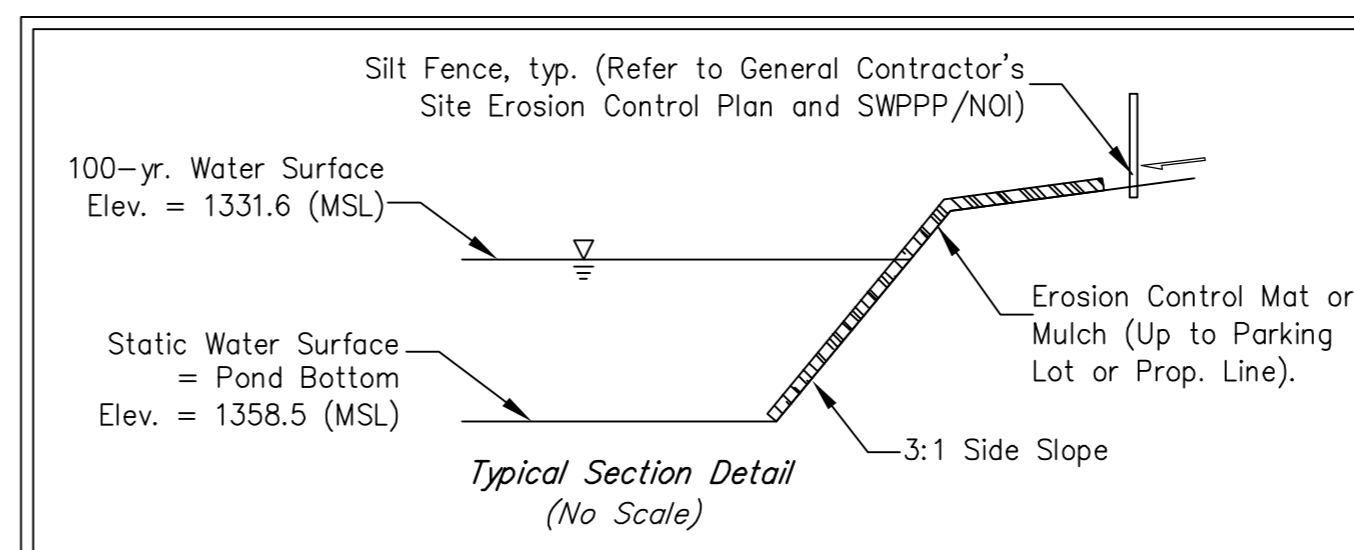
Contractor shall prepare ground per City Specifications. All seeding operations shall conform to City of Wichita Standard Specification. All cost associated with seeding, mulching and fertilizing shall be included in bid item "Project Seeding".

2. Contractor to strip top 3" of soil within Pond Area before mass grading and stockpile. Top soil stockpile to be redistributed over Pond Area above static water elevation prior to seeding.

3. Compaction of 95% shall be obtained in all street R/Ws, 90% in all other areas.

4. Any excess excavation shall be stockpiled on-site at an area indicated by the Engineer out of easements and R/W.

NOTE:
Utilities as shown were flagged during the surveying phase. Storm Water Sewer Contractor shall use CAUTION when working around existing utility locations. Storm Water Sewer Contractor to work with Utility Companies to determine depth and location prior to construction and adjust as needed.



		Budget Rent-A-Car East	
		Line 1 & Pond	
Storm Water Sewer Improvements		Baughman Company, P.A. 315 Ellis St. Wichita, KS 67211 P 316-262-7271 F 316-262-0149 ENGINEERING SURVEYING PLANNING LANDSCAPE ARCHITECTURE	
PROJECT NUMBER PPS	DESIGN MWS	DRAWN MWS	
REVISIONS:	APPROVED	DATE 10/08	
	SCALE Noted	SHEET	
			2 OF 5
E:\eng\Budget Rent A Car\sws line 1.dwg			08-07-E174