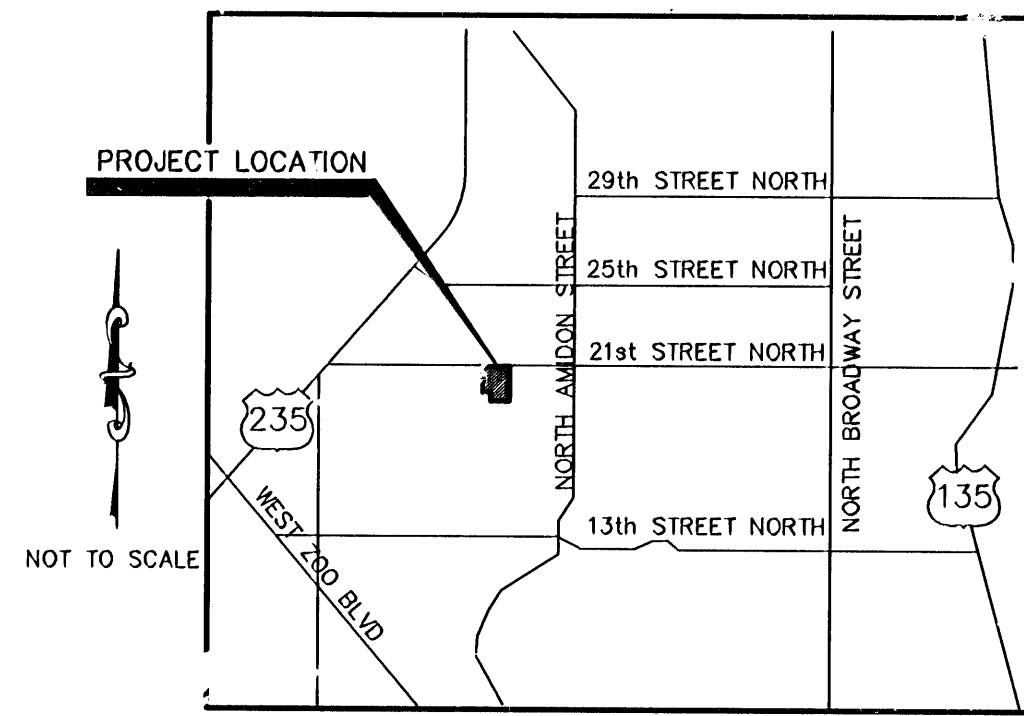
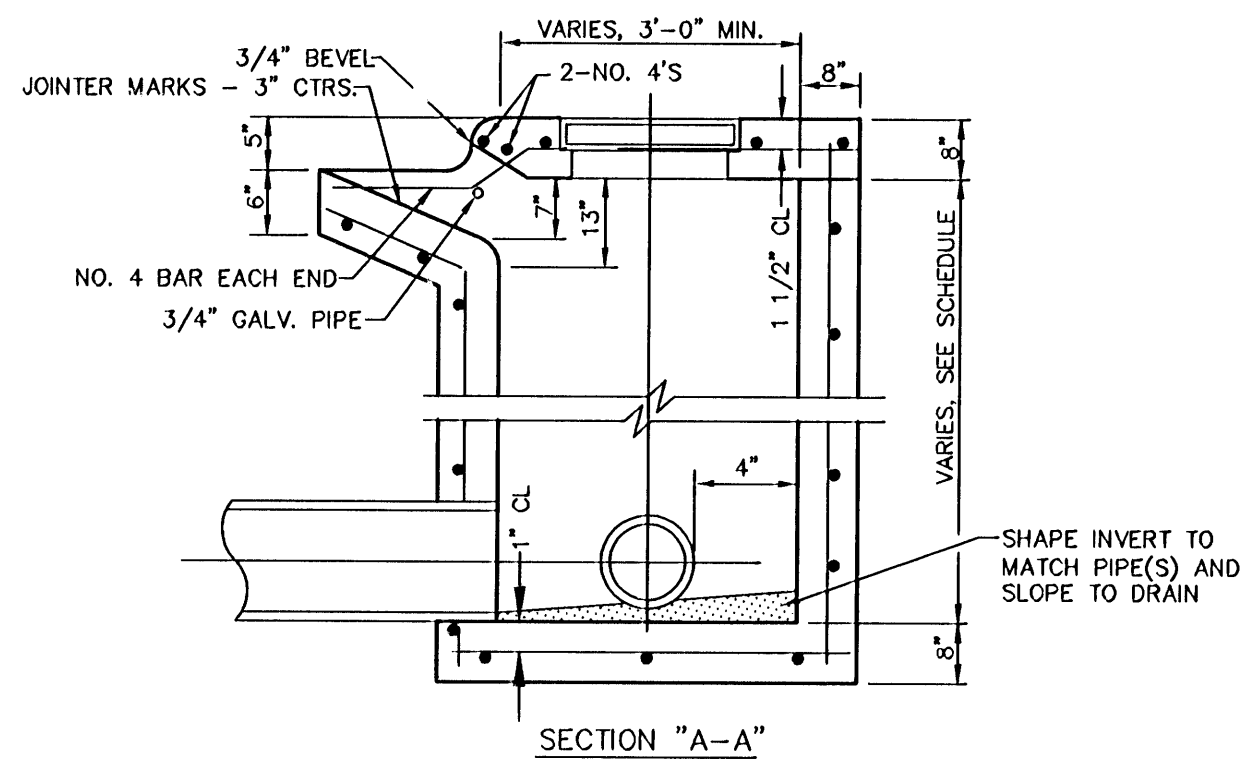
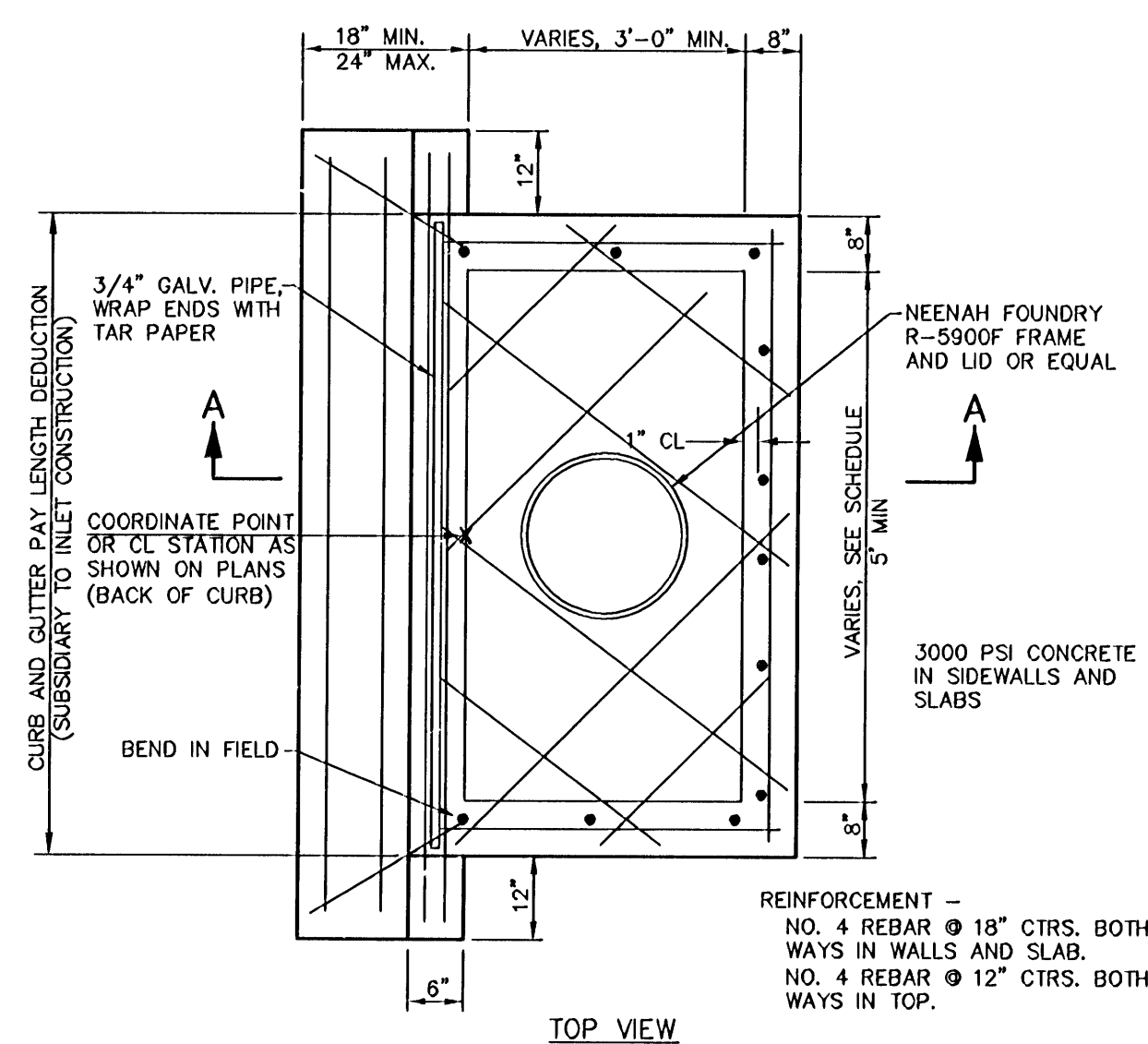


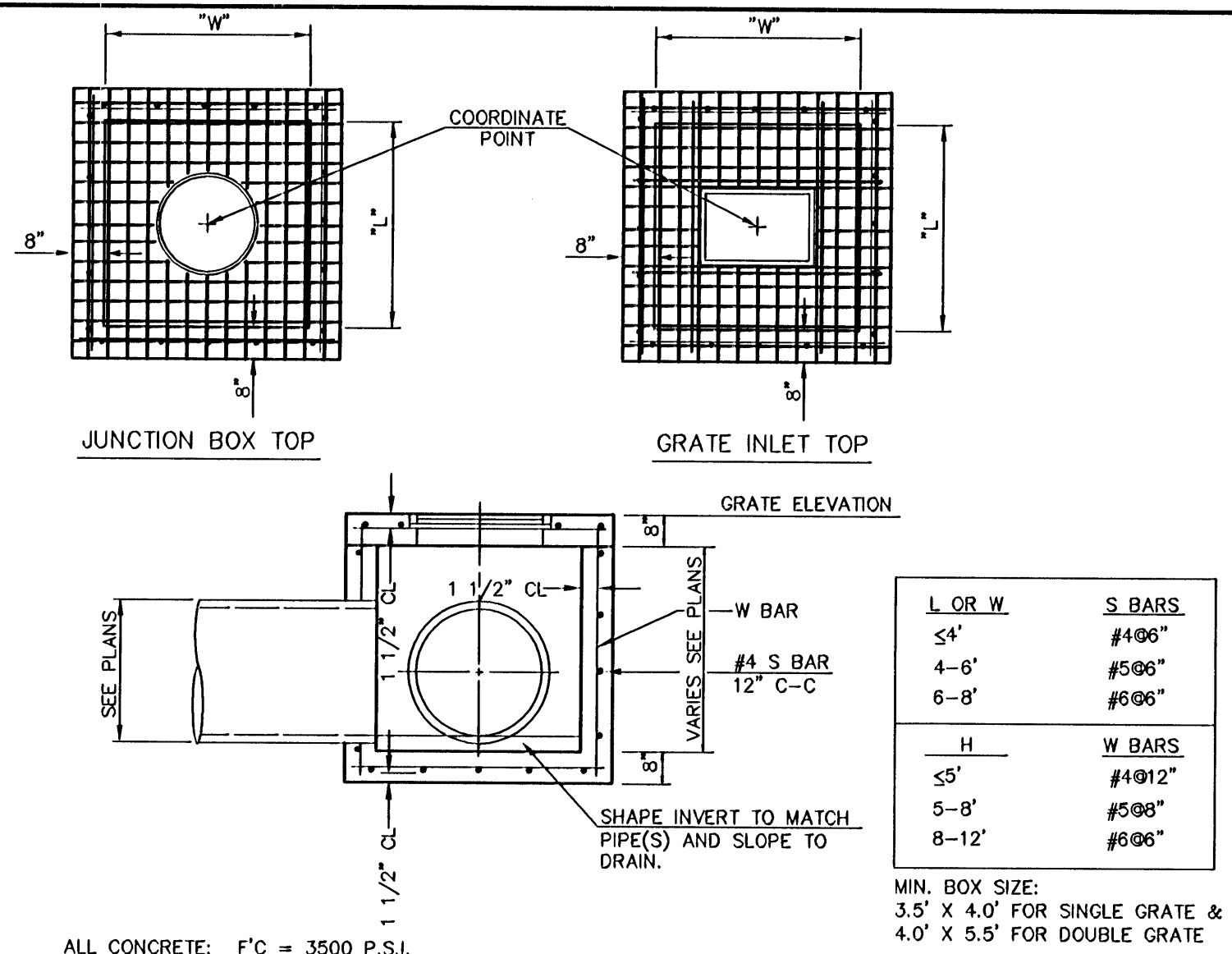
STORM SEWER TO SERVE
LOT 1, MARINA LAKE 7TH ADDITION
1923PPS (607861)
CITY OF WICHITA, KANSAS



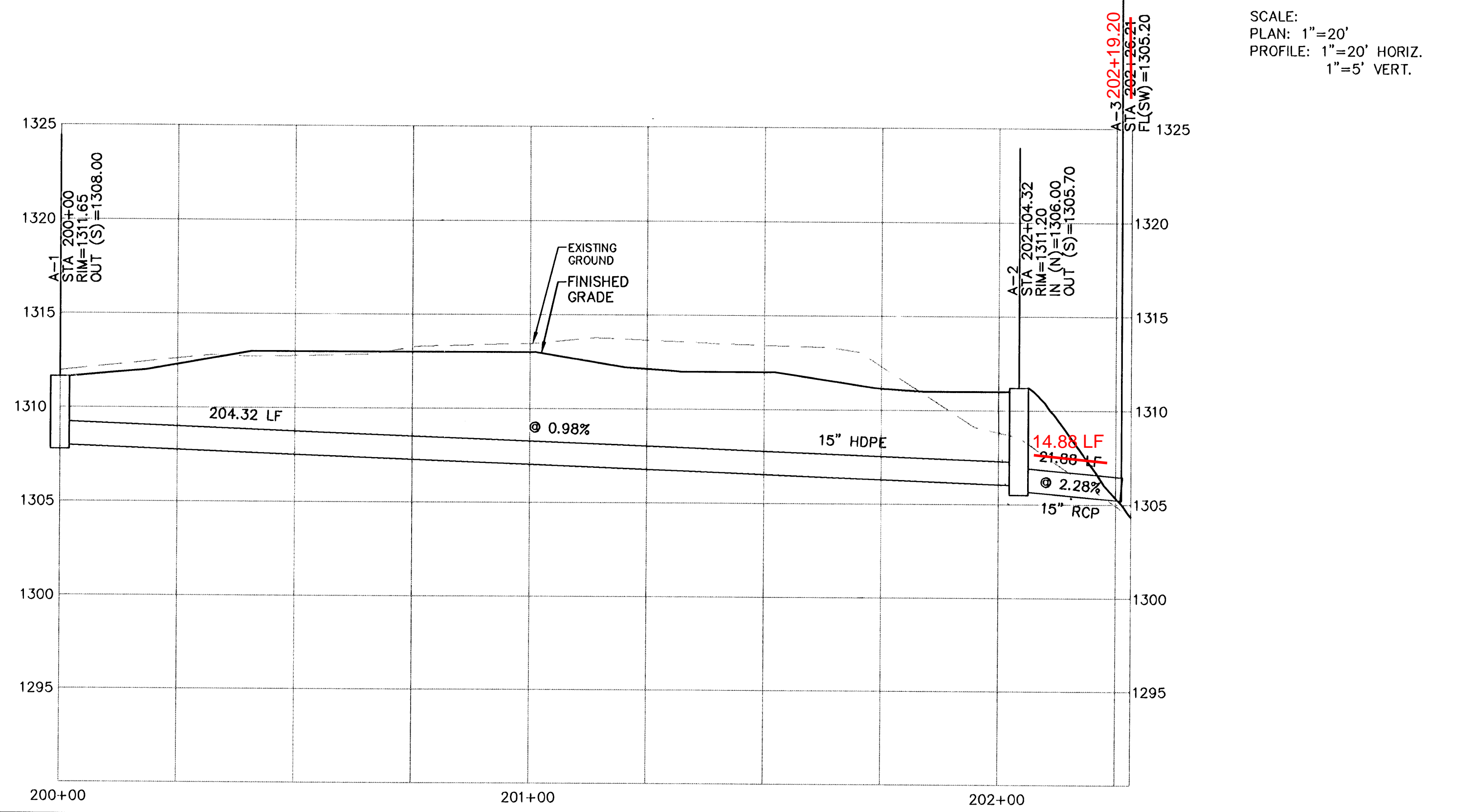
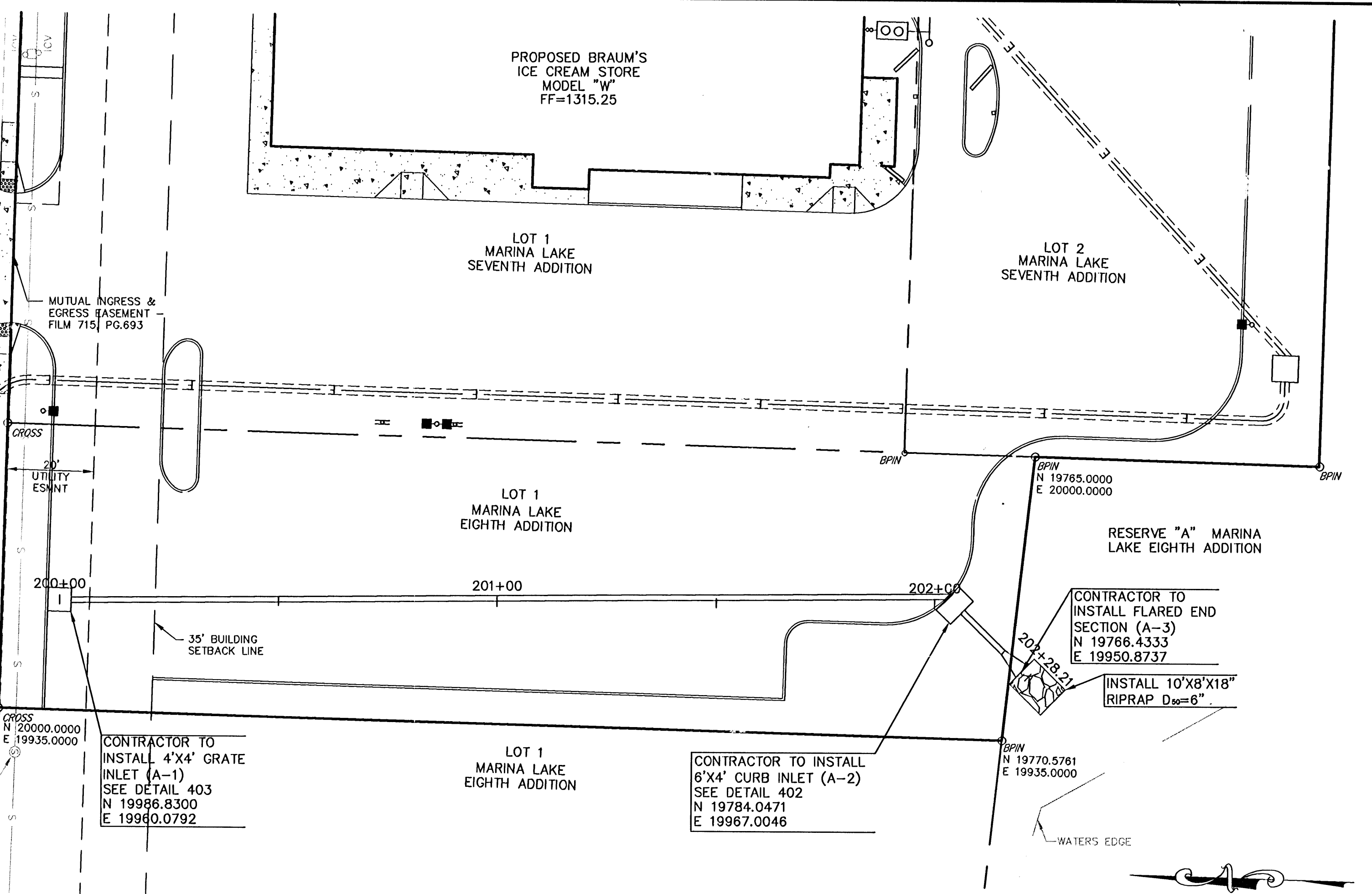
LOCATION MAP
CITY OF WICHITA, KANSAS



CURB INLET 402



GRATE INLET OR JUNCTION BOX 403



APPROVED AS NOTED
BY CITY ENGINEER OF WICHITA

Jelianne Kellman 10-3-08

NOTE TO CONTRACTORS

INSTALLATION, INSPECTIONS AND TESTING FOR THIS PROJECT IS TO BE PROVIDED BY A LICENSED CONSULTING ENGINEERING FIRM UNDER CONTRACT WITH THE OWNER/DEVELOPER. SAID INSPECTION TO BE IN ACCORDANCE WITH THE CITY OF WICHITA STANDARD CONSTRUCTION ENGINEERING PRACTICES AND CERTIFIED BY A LICENSED PROFESSIONAL ENGINEER. NO WORK SHALL BE PERFORMED IN DEDICATED EASEMENTS OR PUBLIC RIGHT-OF-WAY BY THE CONTRACTOR WITHOUT SUCH INSPECTION NOR SHALL ANY WORK BE COMMENCED WITHOUT WRITTEN AUTHORIZATION BY THE CITY ENGINEER. ALL CONSTRUCTION AND MATERIALS SHALL COMPLY WITH THE CITY OF WICHITA SPECIFICATIONS AND STANDARDS (ON FILE AND AVAILABLE IN THE CITY ENGINEER'S OFFICE).

GENERAL NOTES:

- THE CONTRACTOR SHALL BE RESPONSIBLE FOR PRESERVING PROPERTY IRONS. THE CONTRACTOR WILL BE REQUIRED TO RE-ESTABLISH ANY PROPERTY IRONS WHICH ARE DAMAGED OR DESTROYED BY THEIR CONSTRUCTION OPERATIONS. SUCH IRONS SHALL BE RE-ESTABLISHED BY A LICENSED LAND SURVEYOR IN ACCORDANCE WITH STATE LAWS.
- EXISTING UTILITIES AND THEIR LOCATIONS, AS SHOWN ON THE PLANS, REPRESENT THE BEST INFORMATION OBTAINABLE FOR DESIGN. LOCATION INFORMATION HAS BEEN OBTAINED FROM THE VARIOUS UTILITY COMPANIES AND IS EITHER FROM COMPANY RECORD DRAWINGS OR COMPANY PROVIDED FIELD LOCATIONS. THE PLAN LOCATIONS SHOWN ARE NOT GUARANTEED. ADDITIONAL EXISTING UTILITIES MAY ALSO BE ENCOUNTERED.
- CONTRACTOR WILL BE REQUIRED TO PROVIDE A MINIMUM ADVANCE NOTICE OF FORTY-EIGHT (48) HOURS TO UTILITY COMPANIES PRIOR TO STARTING ANY EXCAVATION AS FOLLOWS:
KANSAS ONE-CALL 1-800-344-7233

THE CONTRACTOR MUST NOTIFY THE FOLLOWING IN CASE OF AN EMERGENCY:
KANSAS GAS SERVICE (316) 832-3177
WESTAR ENERGY (316) 281-6859
AT&T (316) 288-2213
CITY OF WICHITA WATER DEPT. (316) 268-4555
CITY OF WICHITA CENTRAL INSPECT. (316) 268-4341

GENERAL NOTES CONT'D:

- RUBBLE FROM THE REMOVAL OF MISCELLANEOUS STRUCTURES AND EXCESS EXCAVATION WHICH IS TO BE WASTED SHALL BE DISPOSED OF ON SITES TO BE PROVIDED BY THE CONTRACTOR. THESE SITES SHALL BE APPROVED BY THE ENGINEER AS TO SUITABILITY, APPEARANCE AND SITE LOCATION. LOCATIONS THAT, IN THE OPINION OF THE ENGINEER, WILL NOT LEAVE AN UNSIGHTLY APPEARANCE WILL NOT BE APPROVED. ALL DISPOSAL SITES MUST BE APPROVED BY THE KANSAS DEPARTMENT OF HEALTH AND ENVIRONMENT (KDHE). MATERIAL EITHER STOCKPILED OR DISPOSED OF IN A FLOOD PLAIN WOULD REQUIRE A KANSAS STATE BOARD OF AGRICULTURE PERMIT. ANY MATERIAL DUMPED IN WATERS OF THE UNITED STATES OR WETLANDS IS SUBJECT TO U.S. CORPS OF ENGINEERS PERMITTING REGULATIONS. ANY MATERIAL BURIED OR STOCKPILED BEYOND APPROVED CONSTRUCTION LIMITS WOULD REQUIRE ADDITIONAL ARCHAEOLOGICAL INVESTIGATIONS UNLESS BURIED IN A PREVIOUSLY APPROVED BORROW LOCATION.
- ALL DISTURBED AREAS TO BE SEEDED WITH A RYE GRASS AT A RATE OF 200 LBS/ACRE WITHIN 10 DAYS OF CONSTRUCTION. COST SHALL BE CONSIDERED SUBSIDIARY TO PROJECT.
- CONTRACTOR SHALL PROVIDE TEMPORARY SEDIMENT CONTROL AT ALL INLETS. SUCH CONTROL SHALL BE MAINTAINED UNTIL AND UPON GERMINATION OF SEEDING. ACCEPTABLE MEANS OF CONTROL SHALL BE APPROVED BY THE ENGINEER.

EXISTING TOPOGRAPHIC INFORMATION PROVIDED BY:
SAVOY COMPANY, P.A.

TOPOGRAPHIC INFORMATION NOT FIELD VERIFIED BY KAW VALLEY ENGINEERING

As Built Plans:
CONTRACTOR: Ewertz Excavation
INSPECTOR: Lary Gann, K E Miller Engineering
PDF by: NWS, 01-12-09

BENCHMARKS:
BM: CITY OF WICHITA BENCHMARK, NORTHEAST CORNER OF CONCRETE BASE FOR CROSS WALK, 28.2' SOUTH OF 21ST STREET & 174.3' EAST OF BENJAMIN & 195.8' WEST OF RICHMOND. ELEV=1312.25 NGVD

PROJ. NO.	A06_3079
DATE	SEPTEMBER 2008
DESIGNER	LDO
DRAWN BY	JT
CFN	30790PP
SHEET	8 OF 12

PROJ. NO. A06_3079
DATE: SEPTEMBER 2008
DESIGNER: LDO
DRAWN BY: JT
CFN: 30790PP
SHEET: 8 OF 12

2319 NORTH JACKSON
P.O. BOX 1304
JUNCTION CITY, KANSAS 66441
785-762-5040 FAX 785-762-7744
E-MAIL jek@kveg.com
WEB SITE www.kveg.com

KAW VALLEY ENGINEERING, INC. - CONSULTING ENGINEERS
Office: Junction City, Kas. Kansas City, Mo. Lawrence, Ise.

BRAUM'S ICE CREAM & DAIRY STORES
2223 WEST 21ST STREET NORTH
WICHITA, KANSAS

EXHIBIT 'A' - STORM SEWER PLAN & PROFILE
PRIVATE STORM WATER 1923PPS (607861)

REV. DATE. DESCRIPTION
0 10-4-08 INITIAL ISSUE

LEO J. JACKSON
REGISTERED PROFESSIONAL ENGINEER
KANSAS
9772

DSN DWN CHK
LDO JT

\\saw05a\pww\jld\106_3079\DESIGN\30790PP.dwg, 10/02/2008 9:35:50 AM, lly