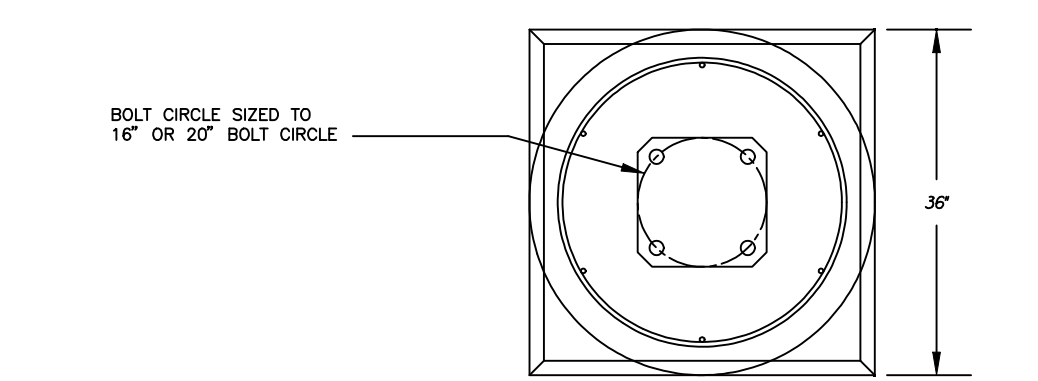
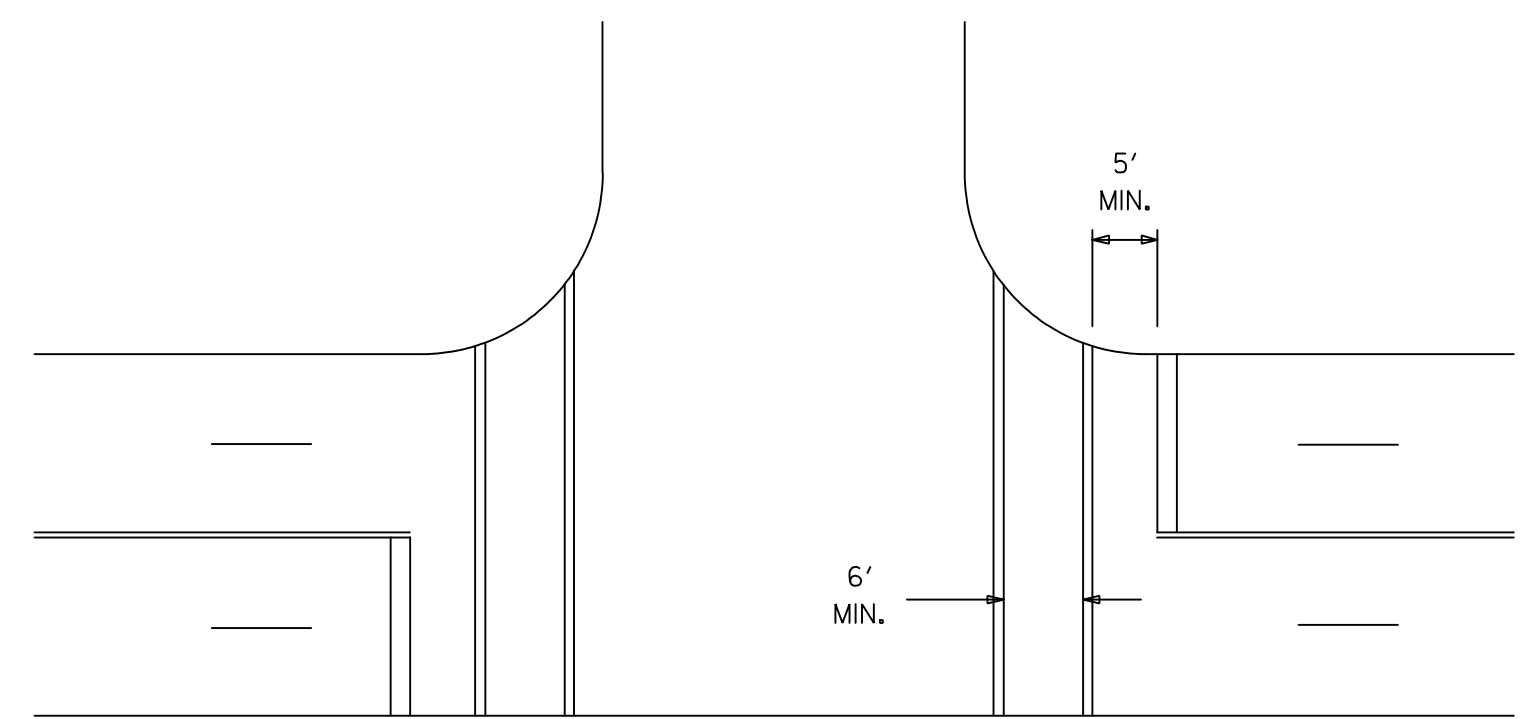


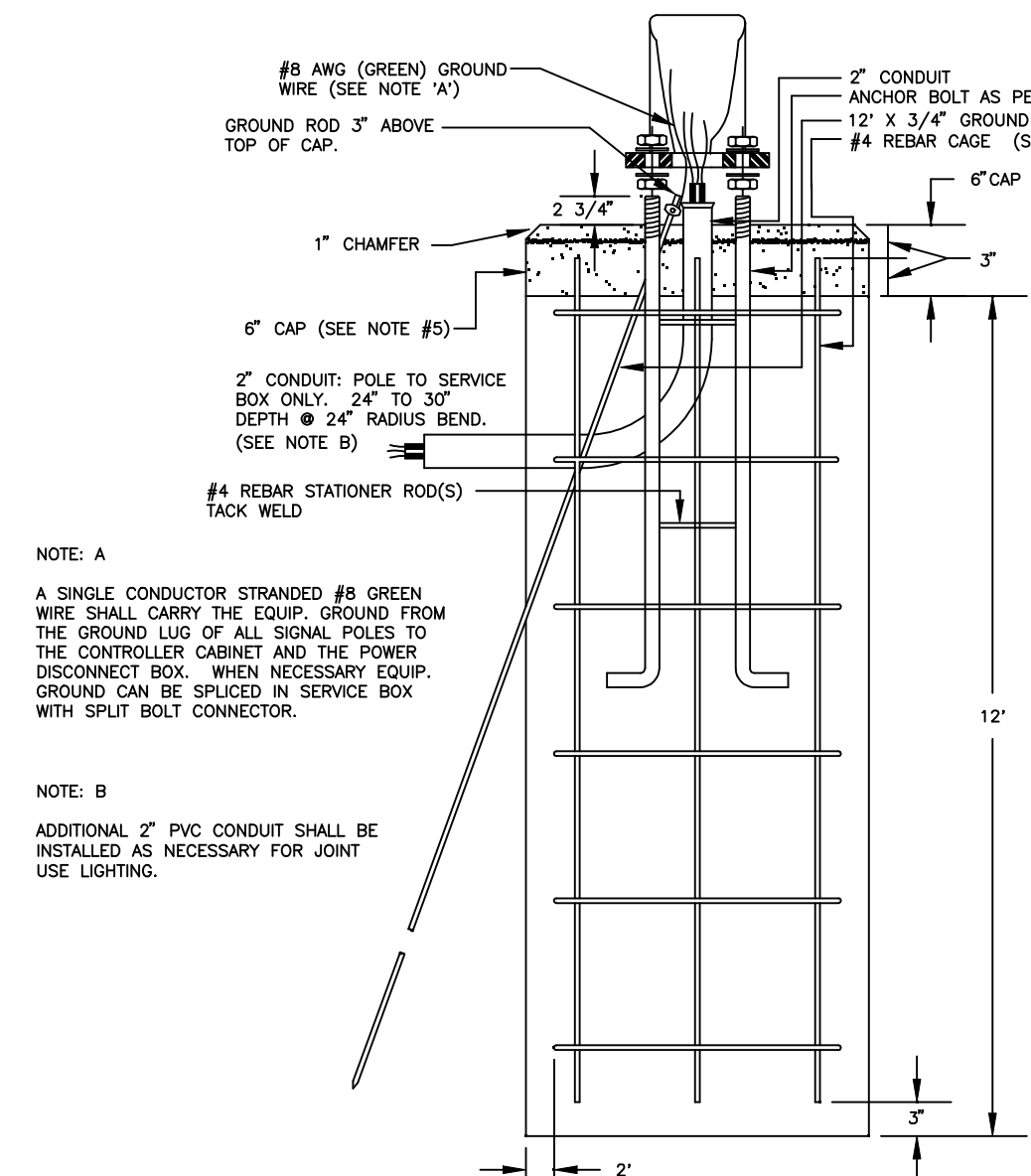
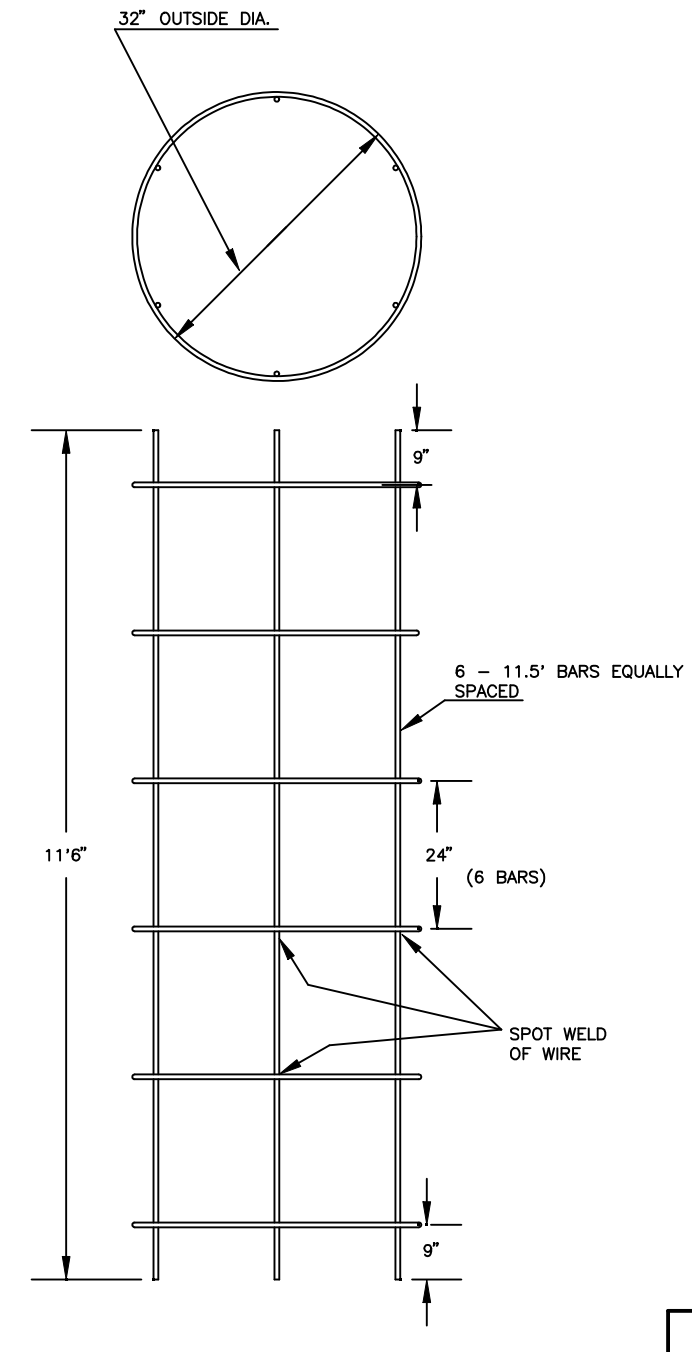
TYPICAL CROSSWALKS

Crosswalk lines shall be 12' solid white lines. They shall be spaced a minimum of 6' apart from inside edge to inside edge.

When required, Stop lines shall be installed a minimum of 5' from crosswalks.



REBAR CAGE



- NOTE:
1. THE ANCHOR BOLTS FOR THE SIGNAL POLE SHALL BE TACK WELDED TOGETHER IN A 16\"/>
  - 2. USE ANTI-SEIZE COMPOUND ON ALL THREADS.
  - 3. 12\"/>
  - 4. CLASS 'A' CONCRETE SHALL BE USED TO CONSTRUCT BASE.
  - 5. CONSTRUCT A 6\"/>
  - 6. CONDUIT SHALL HAVE PLASTIC (OR METAL) BUSHING (ABOVE BASE) TO PREVENT CABLE CHAFING.
  - 7. USE #6 BARE COPPER GROUND CONDUCTOR FROM CLAMP TO GROUND BOLT IN ACCESS HOLE.

1. DIRECTIONAL ALIGNMENT OF PED. INDICATIONS & BRACKET(S) SHALL BE DETERMINED IN THE FIELD BY THE ENGINEER.
2. THROUGH HOLES IN THE POLE SHALL BE DRILLED AND WELL REAMED TO PREVENT CABLE CHAFING.
3. HINGE PEDESTRIAN SIGNAL DOORS AWAY FROM POLE.

I:\2008\08521-002\standards\08521-2-sigpole.dgn  
date plotted: 9-8-2008  
deliver to: DRP



HYDRAULIC AVENUE STEEL SIGNAL POLE ASSEMBLY DETAILS		
PROJECT NUMBER 472-84424 PHASE IV		
DRAWN BY: T.M.	SCALE	REVISED BY: D.R.M.
DATE: MAY 97	NO SCALE	DATE: NOV 08
CITY OF WICHITA DEPARTMENT OF PUBLIC WORKS		
DIVISION OF TRAFFIC ENGINEERING		
PAUL D. GUNZELMAN P.E.	TRAFFIC ENGINEER	SHEET 4 OF 7