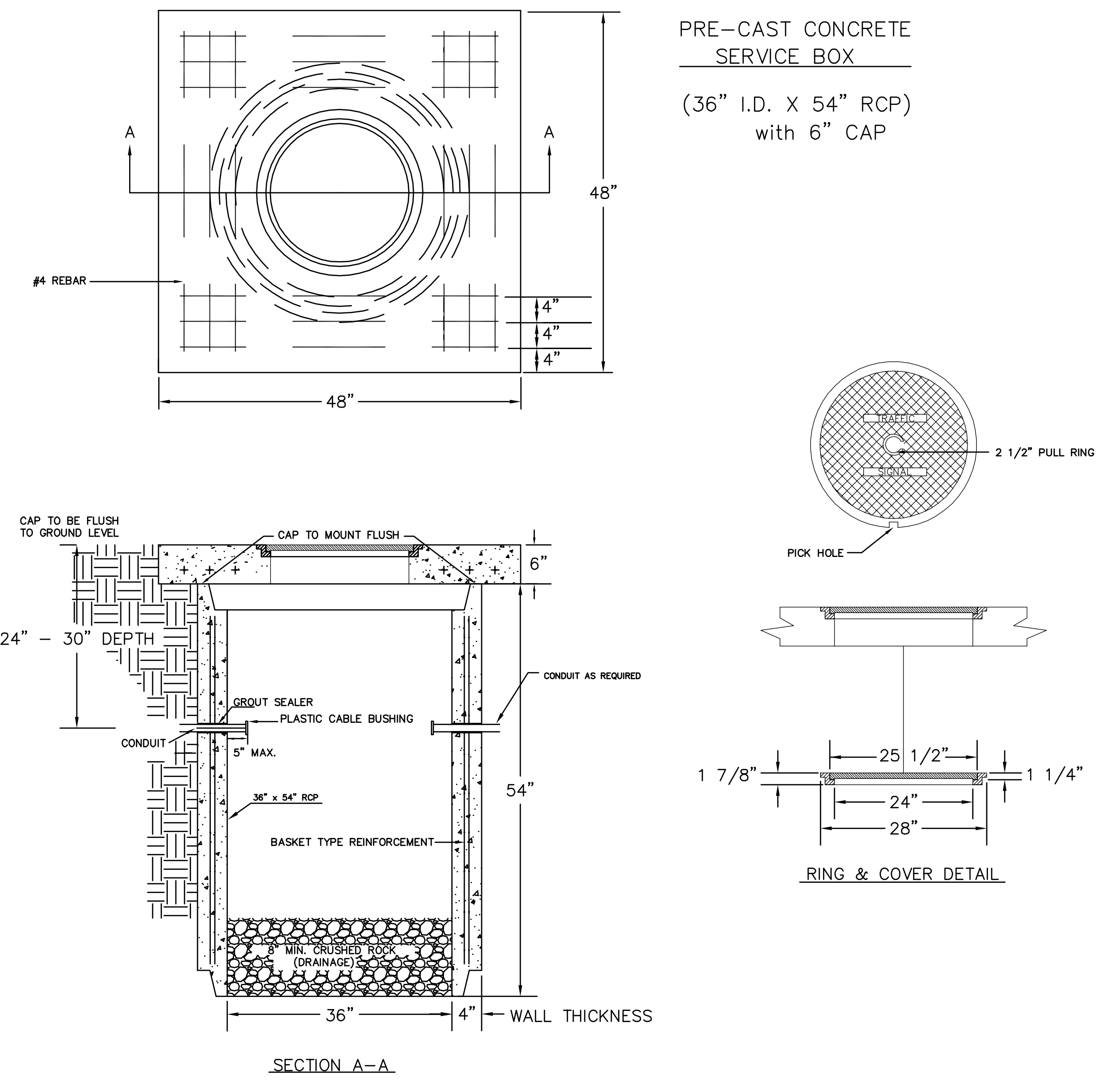
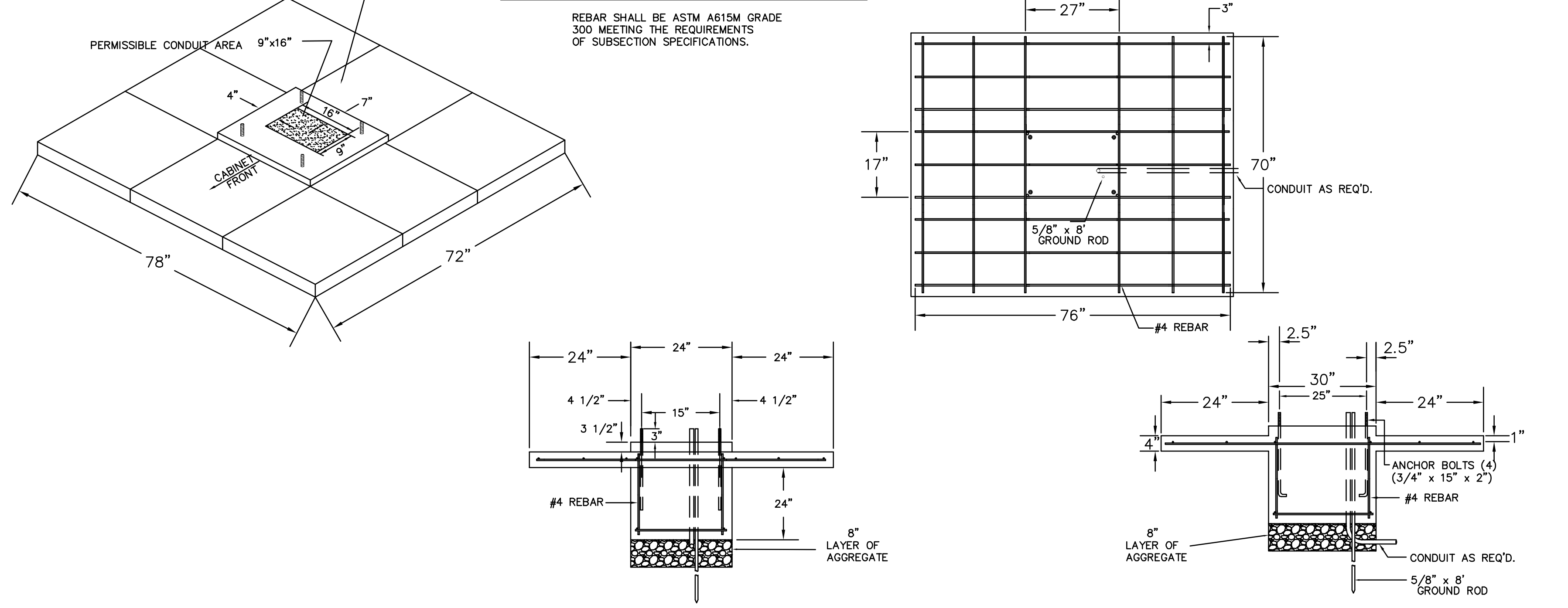


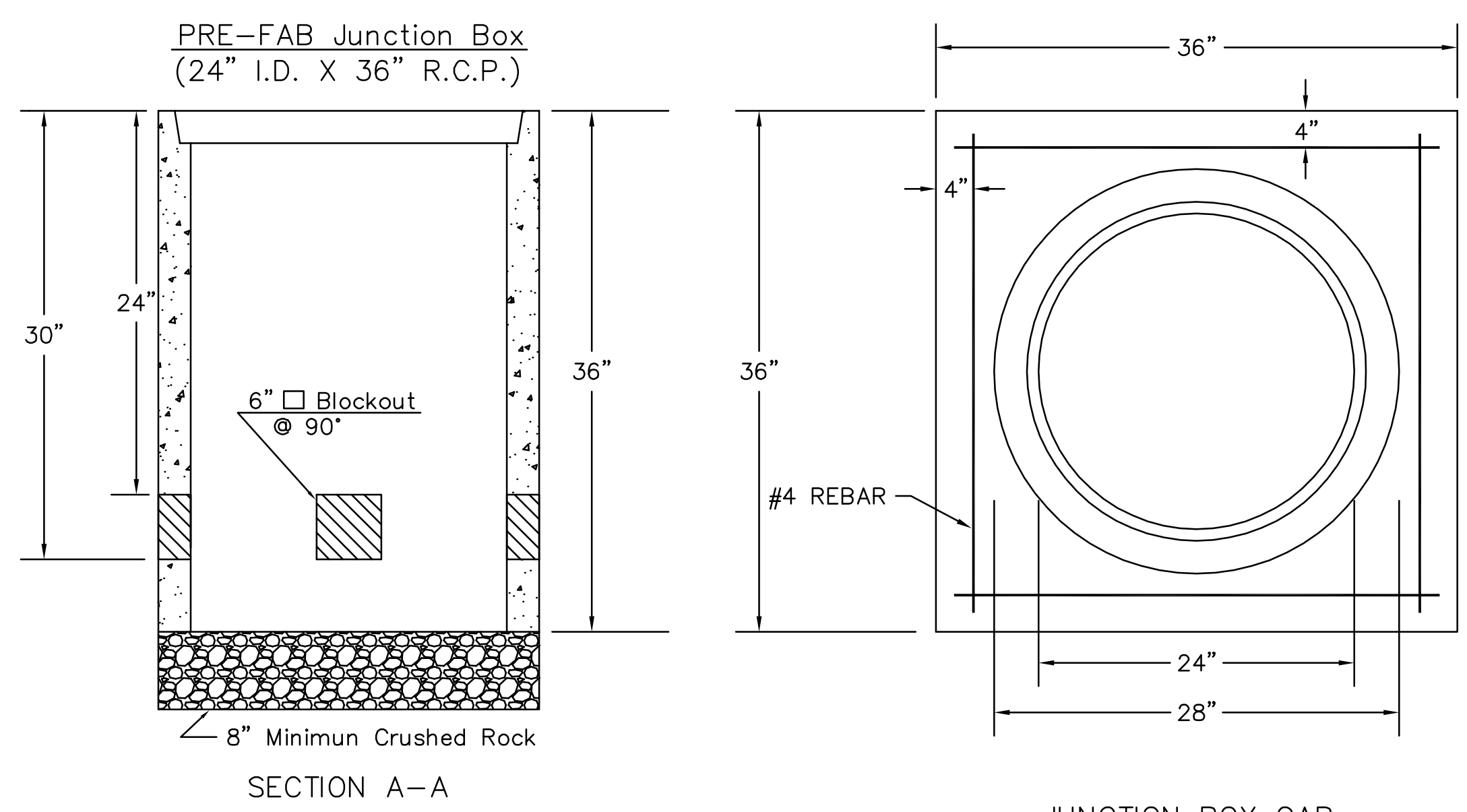
# SERVICE BOX CONSTRUCTION/INSTALLATION DETAILS



# 170 CONTROLLER PAD DETAILS



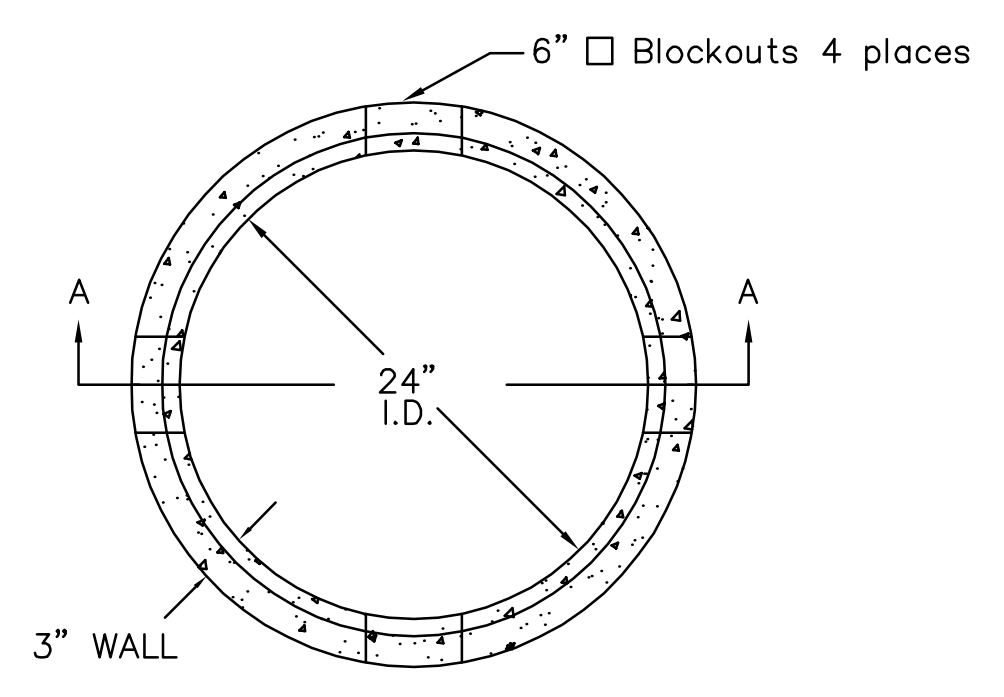
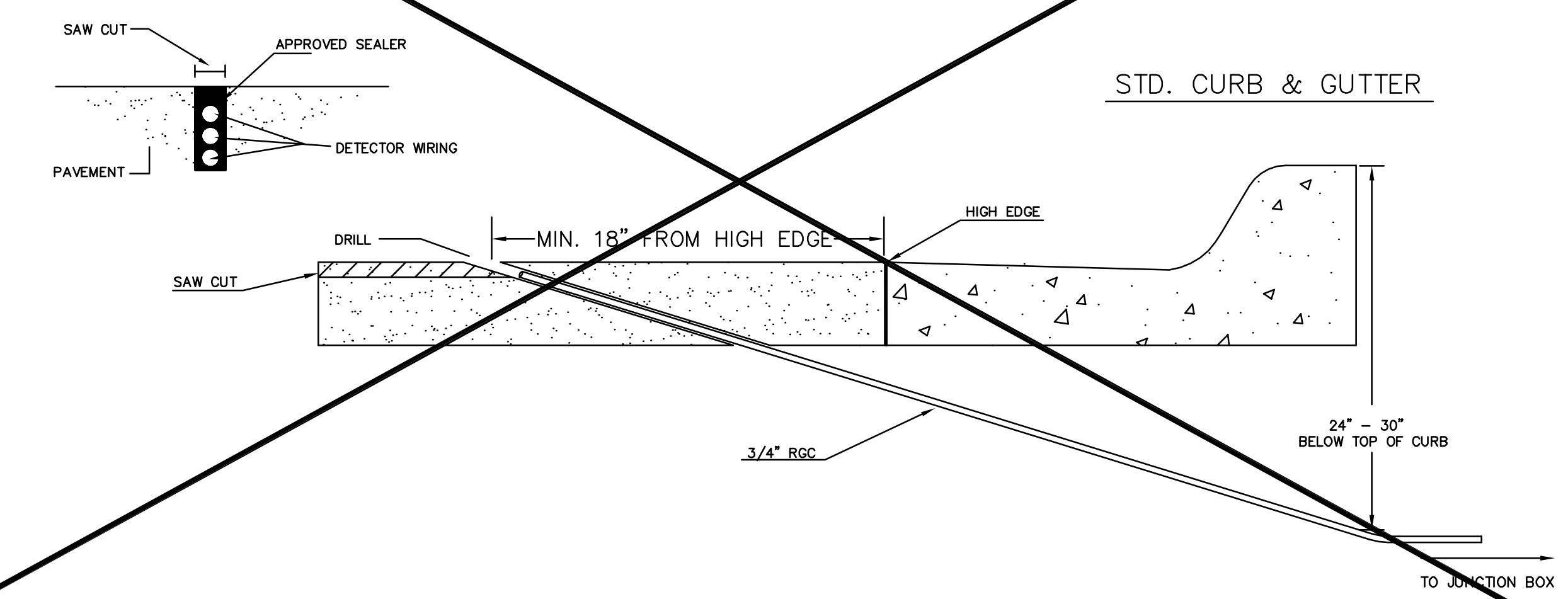
# JUNCTION BOX DETAILS



## NOTES:

- SERVICE & JUNCTION BOX:**
- CONDUIT CONNECTION TO BE FLUSH TO WITHIN 5" OF INSIDE FACE OF SIDE WALL, CONDUIT TO DRAIN INTO SERVICE BOX.
  - CONDUIT CONNECTIONS TO SERVICE BOX SHALL BE TERMINATED WITH PLASTIC CABLE BUSHING.
  - CONDUIT SHALL BE SEALED WITH APPROVED SEALER AT INSIDE WALL FACE.
  - ALL SERVICE & JUNCTION BOXES TO HAVE 8" OF CRUSHED ROCK.
- TRENCHING:**
- DEPTH TO BE 30" MINIMUM WITH ROCK & STUBBLE FREE BACKFILL TO SERVE AS BEDDING MATERIAL. MAINTAIN MINIMUM CONDUIT DEPTH IN TRENCH.
  - BACKFILL TO BE COMPACTED IN 6" LOOSE LIFTS BY HAND OR MECHANICAL TAMPING TO A 95% STANDARD DENSITY.
- CONDUIT:**
- SLOPE CONDUIT TO DRAIN AS DIRECTED BY THE ENGINEER.
  - 3" RIGID STEEL CONDUIT BTWN. SERVICE BOXES.  
2" " " " " BTWN. SERVICE BOX AND POLE.  
1 1/4" " " " " BTWN. SERVICE & JUNCTION BOXES.  
3/4" " " " " BTWN. JUNCTION BOXES.  
3/4" " " " " BTWN. JUNCTION BOX & DETECTOR LOOP SAW CUT

# CONDUIT/DETECTOR WIRE INSTALLATION DETAILS



SEE SERVICE BOX INSTALLATION FOR RING & COVER DETAILS.

Saved: 01-05-2009 11:26:10 AM by CP  
 Plot Scale: 1:1 01-05-2009 11:32:00 AM by CP  
 I:\2008\08521-002\Standards\08521-2-Controller Pad Detail 2006

	HYDRAULIC AVENUE	
	SERVICE/JUNCTION BOX, CONTROLLER PAD CONSTRUCTION/INSTALLATION DETAILS	
	PROJECT NUMBER 472-84424 PHASE IV	
	DRAWN BY: T.M.	APPROVED BY:
DATE: Apr. 96		DATE: Jan. 2006
CITY OF WICHITA		
DEPARTMENT OF PUBLIC WORKS		
TRAFFIC ENGINEERING DIVISION	SCALE	
PAUL D. GUNZELMAN P.E.	TRAFFIC ENGINEER	NO SCALE