

CP#200 Found 3/4" iron pipe in thimble
 N 1,704,373.4927 E 1,651,668.8124
 S/4 Cor. Sec. 33 T26S R1E = N/4 Cor. Sec. 4 T27S R1E
 Ctr. traveled way concrete road 29th St. N.
 Ctr. RR tracks. 25' ± W

CP#201 Found 1/2" iron pipe SE cor.
 intersection of 29th St. N. & Ohio St.
 N 1,704,333.4938 E 1,652,380.3540
 Ctr. traveled way Ohio St. 40' ± W
 50' ± N

DETECTOR SUMMARY							
CAMERA NO.	DETECTION ZONE	MODE	SIZE (LxW)	PHASE CALLED	PHASE EXTENDED	DELAY/STRETCH TIMER	INITIAL SETTING (SEC.)
1	D6-1	Pulse	6x6	6	6	S	1
1	D6-2	Pulse	6x6	6	6	S	1
1	D6-3	Presence	60x6	6	6	-	-
1	D6-4	Pulse	6x6	6	6	S	1
1	D6-5	Pulse	6x6	6	6	S	1
1	D6-6	Presence	60x6	6	6	-	-
2	D4-1	Presence	60x6	4	4	-	-
2	D4-2	Presence	60x6	4	4	-	-
3	D2-1	Pulse	6x6	2	2	S	1
3	D2-2	Pulse	6x6	2	2	S	1
3	D2-3	Presence	60x6	2	2	-	-
3	D2-4	Pulse	6x6	2	2	S	1
3	D2-5	Pulse	6x6	2	2	S	1
3	D2-6	Presence	60x6	2	2	-	-
4	D8-1	Presence	60x6	8	8	-	-
4	D8-2	Presence	60x6	8	8	-	-

Detector Summary reflects initial operation.

FUNCTION	PHASE							
	1	2	3	4	5	6	7	8
VEHICLE RECALL	-	X	-	-	-	X	-	-
PED RECALL	-	-	-	-	-	-	-	-
RED LOCK	-	-	-	-	-	-	-	-
YELLOW LOCK	-	-	-	X	-	-	X	-
PERMIT	-	X	-	X	-	X	-	X
PED PHASES	-	-	-	-	-	-	-	-
LEAD PHASES	X	-	X	-	X	-	X	-
DOUBLE ENTRY	-	X	-	X	-	X	-	X
SEQUENTIAL TIMING	-	-	-	-	-	-	-	-
START-UP YELLOW	-	-	-	X	-	-	-	X
OVERLAP A	-	-	-	-	-	-	-	-
OVERLAP B	-	-	-	-	-	-	-	-
OVERLAP C	-	-	-	-	-	-	-	-
OVERLAP D	-	-	-	-	-	-	-	-
EXCLUSIVE	-	-	-	-	-	-	-	-
SIMULTANEOUS GAP	-	-	-	-	-	-	-	-

Function Table reflects initial operation.

FUNCTION	PHASE TIMING							
	1	2	3	4	5	6	7	8
MAX. I	-	80	-	40	-	80	-	40
MAX. II/HFDW	-	80	-	40	-	80	-	40
WALK	-	-	-	-	-	-	-	-
FLASH DW	-	-	-	-	-	-	-	-
MAX. INITIAL	-	8	-	8	-	8	-	8
MIN. GREEN	-	8	-	8	-	8	-	8
T B R	-	-	-	-	-	-	-	-
T T R	-	-	-	-	-	-	-	-
OBSERVE GAP	-	-	-	-	-	-	-	-
PASSAGE	-	2	-	1	-	2	-	1
MIN. GAP	-	1	-	1	-	1	-	1
ADDED ACTUATION	-	2	-	2	-	2	-	2
YELLOW	-	4	-	3.5	-	4	-	3.5
RED CLEAR	-	2.0	-	1.5	-	2.0	-	1.5
RED REVERT	-	-	-	-	-	-	-	-
WALK II	-	-	-	-	-	-	-	-

Phase Timing reflects initial operation.

**EQUIPMENT SPECIFICATIONS
2070 CONTROLLER**

A. Controller Unit: The 2070L controller supplied shall meet the requirements outlined in CalTrans TEES 2002 (latest revision), and the following requirements:

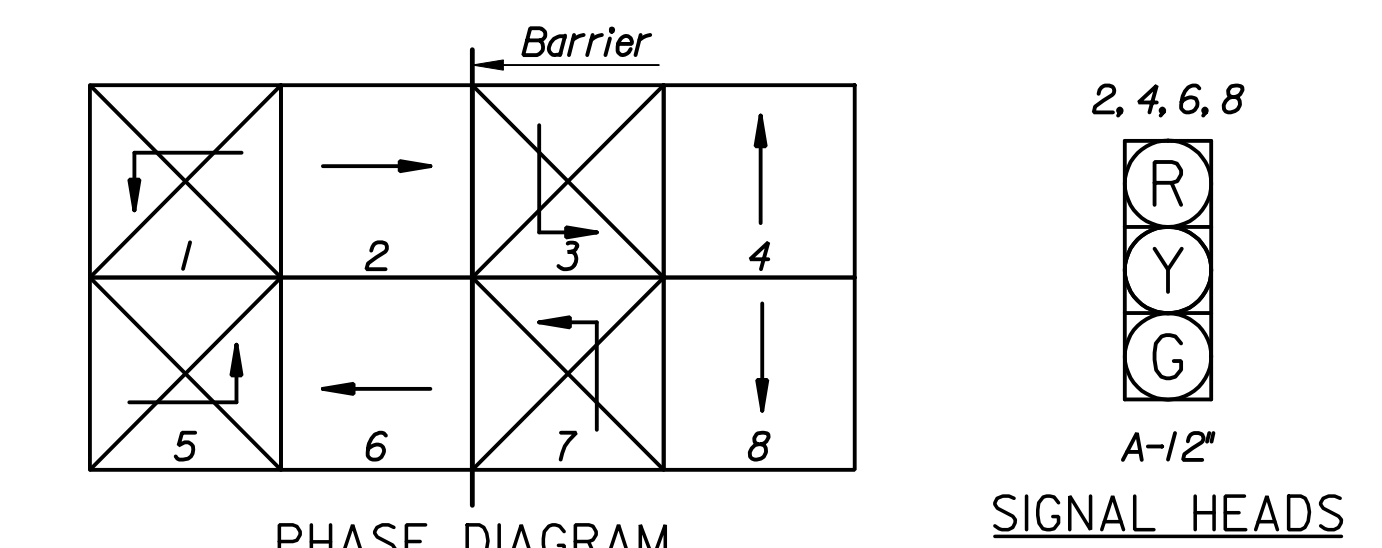
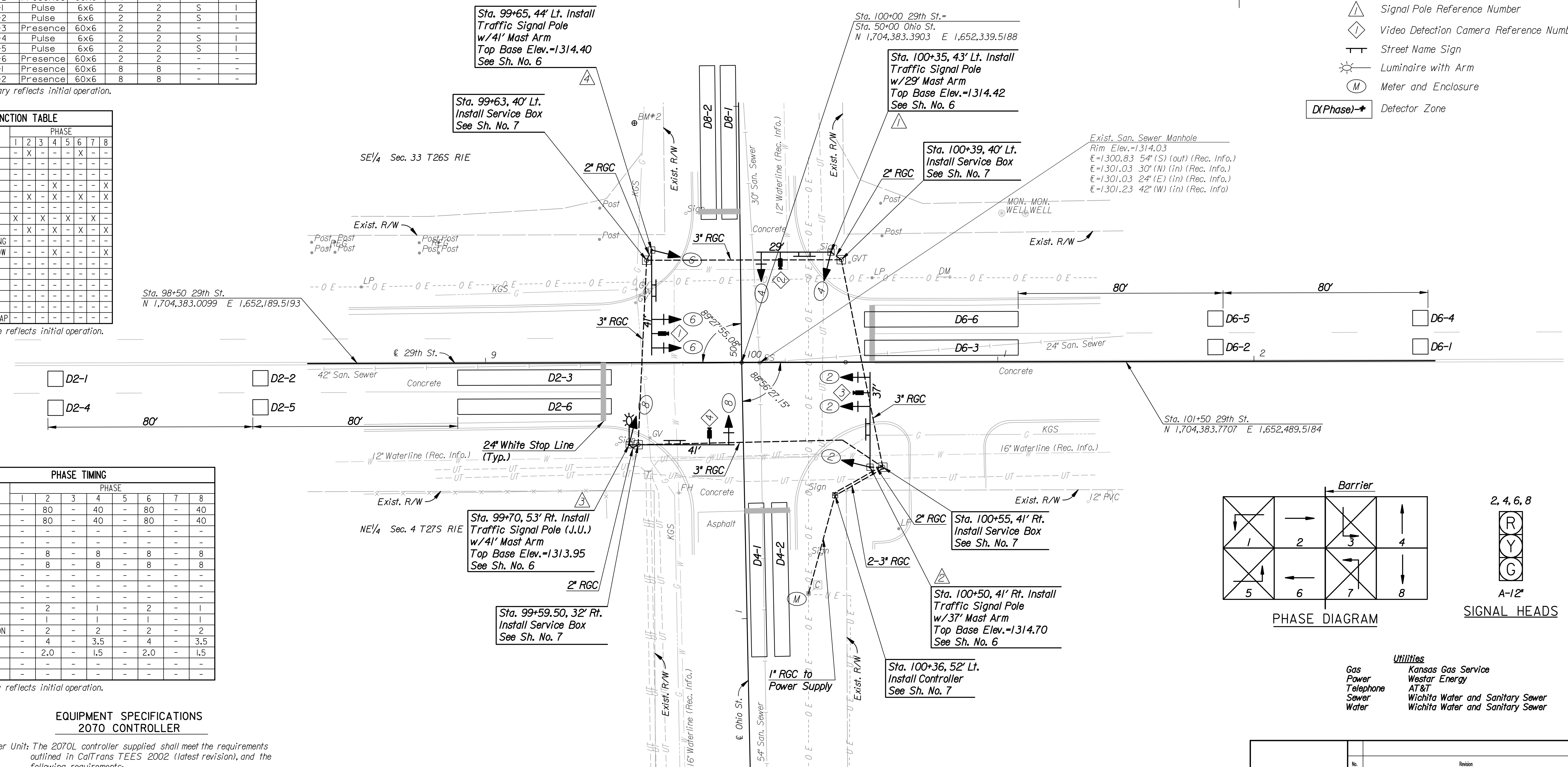
- The 2070L controller shall have a 19" EIA rack mountable chassis (mated to the 170 cabinet).
- 2070-1B CPU module with RJ-45 Ethernet port.
- 2070-2A CI field I/O module for compatibility with CalTrans style CI connector.
- 2070-3B 8X40 front panel with LCD display.
- 2070-4A 10 amp power supply.
- 2070-7A asynchronous serial communications module (RS-232).
- Any unused slot position shall have a cover plate.

B. Conflict Monitor: The Conflict Monitor supplied shall be 2010 ECL conflict monitor.

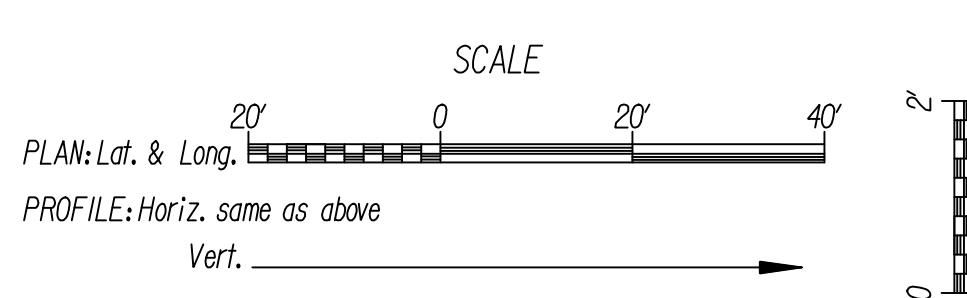
BM#2 C.O.W. BM, RR spike embedded in top of concrete hubguard, SW corner RCB under Ohio St. Elev. 1317.01

LEGEND

- 23' Traffic Signal Pole with Mast Arm & Length
- Traffic Signal Head
- Traffic Signal Head with Backplate
- Video Detection Camera
- Controller with Pad
- Service Box (Pre-Fab)
- Rigid Galvanized Conduit (RGC)
- Signal Phase
- Signal Pole Reference Number
- Video Detection Camera Reference Number
- Street Name Sign
- Luminaire with Arm
- Meter and Enclosure
- D(Phase)-# Detector Zone



- Utilities**
- Gas: Kansas Gas Service
 - Power: Westar Energy
 - Telephone: AT&T
 - Sewer: Wichita Water and Sanitary Sewer
 - Water: Wichita Water and Sanitary Sewer



DSNR: DRM OPER: DRP SCALE: 1"=20'
 I:/2008/08521/PLAN/08521-29th.dgn LAST REV: 9-11-2008 BY: drp

No.	Revision	By	Date
29TH STREET & OHIO STREET			
TRAFFIC SIGNAL PLAN			
JAMES L. ARMOUR, P.E.-CITY ENGINEER CITY OF WICHITA PROJECT NO. 472-84720 PHASE I Professional Engineering Consultants, P.A. 303 S. TOPEKA • WICHITA, KANSAS 67202 316-262-2691 • FAX 316-262-3003			
Designed by	DRM	Job No.	08521
Drawn by	DRP	Date	Dec. 2008
			Sht. 4 of 8