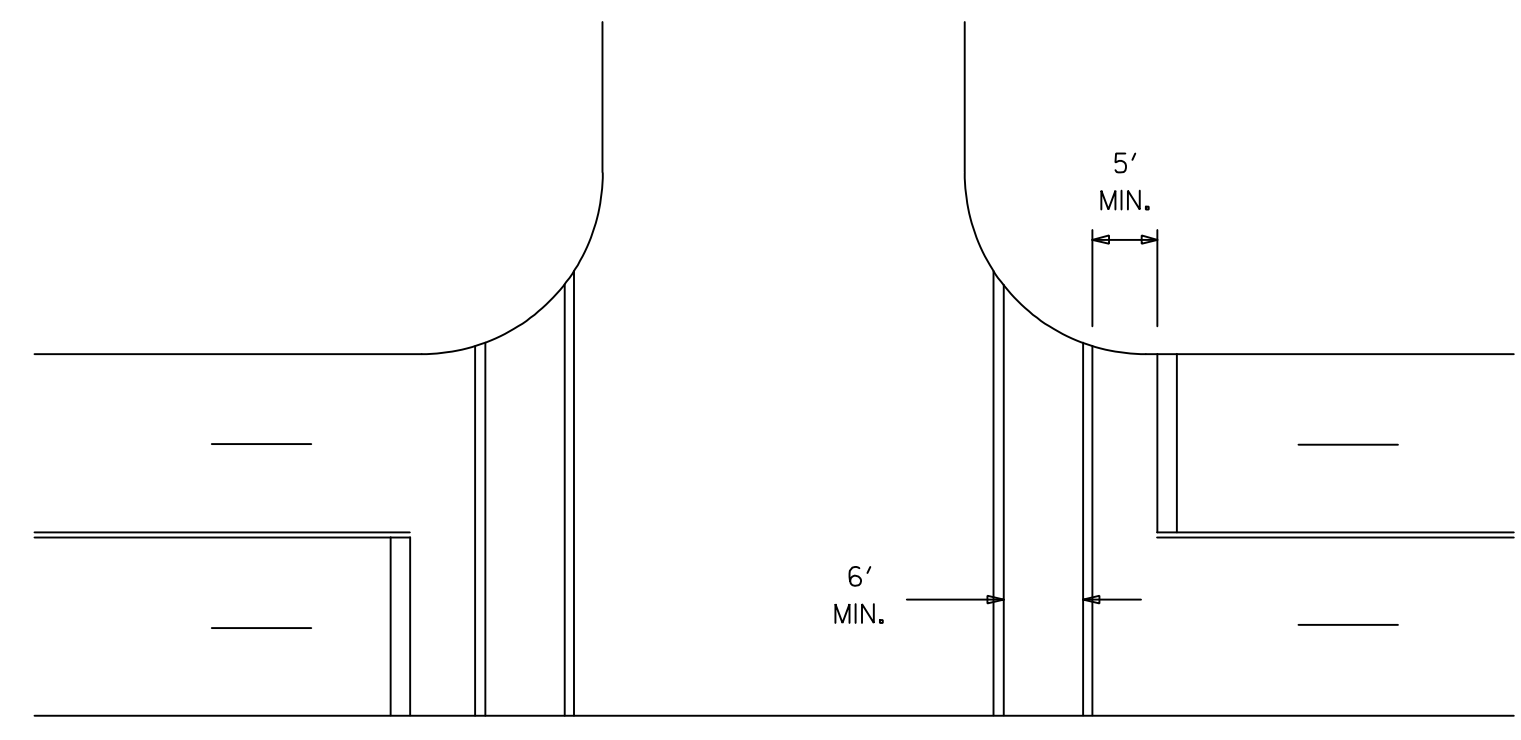


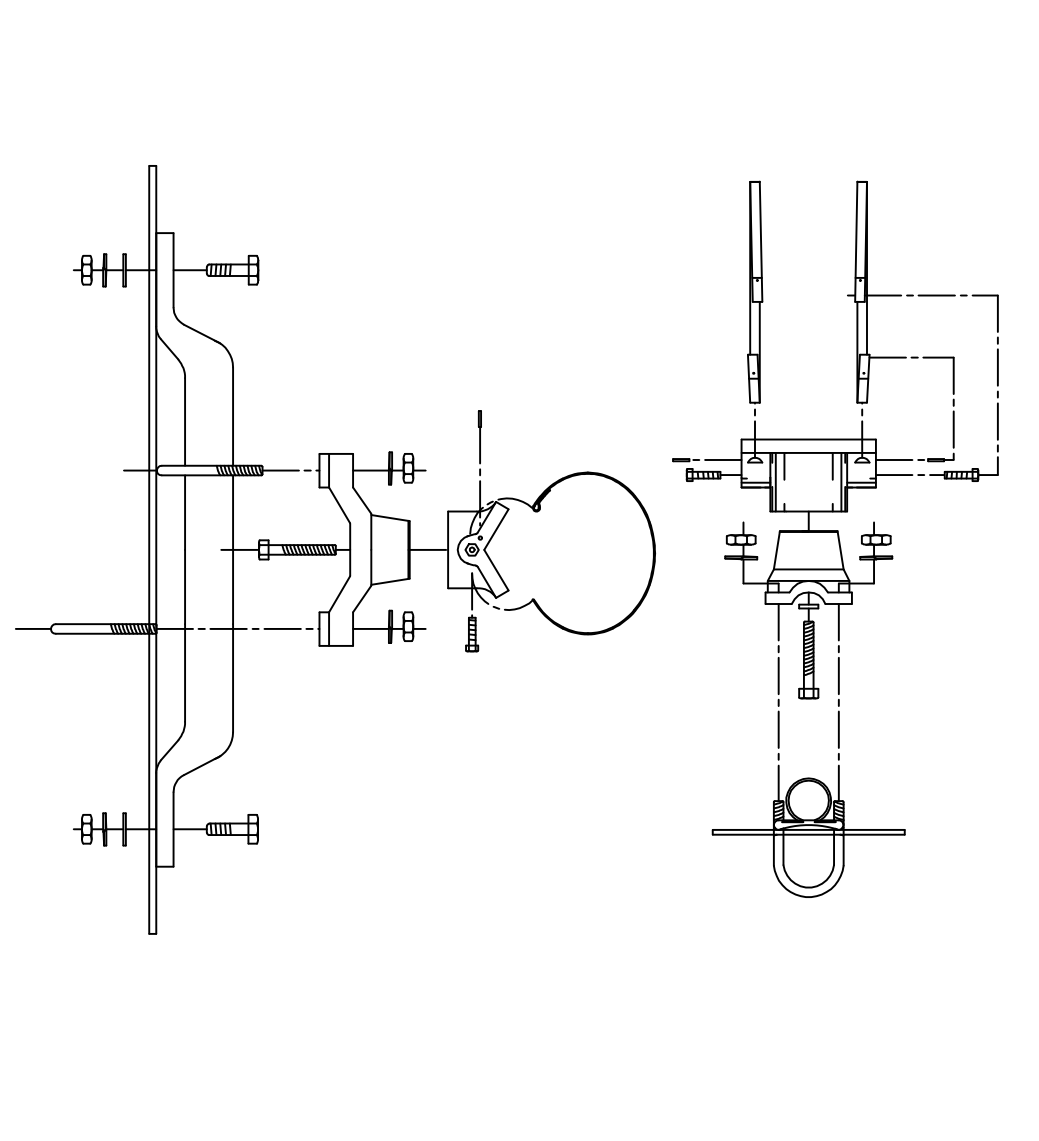
TYPICAL CROSSWALKS

Crosswalk lines shall be 12" solid white lines. They shall be spaced a minimum of 6' apart from inside edge to inside edge.

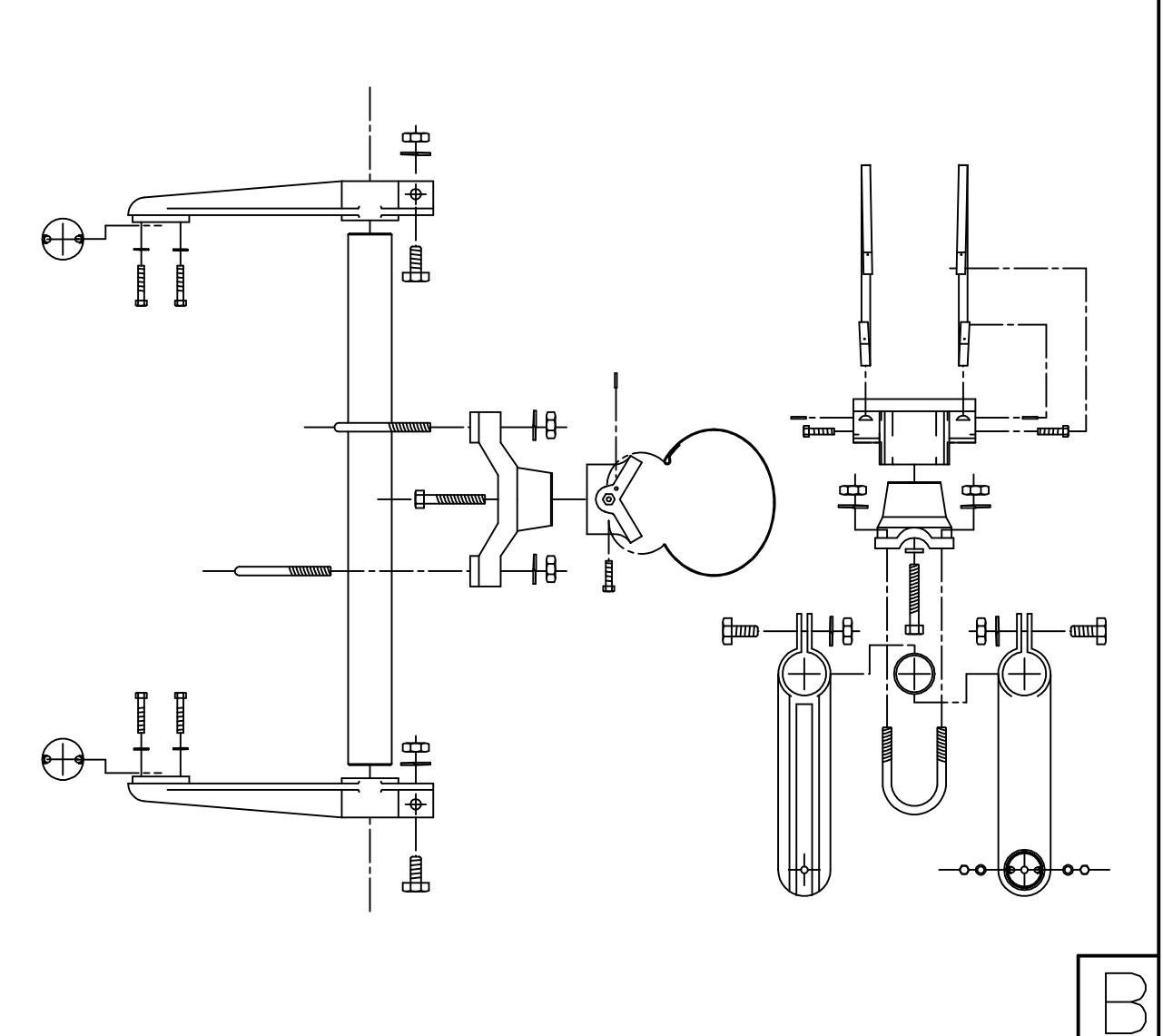
When required, Stop lines shall be installed a minimum of 5' from crosswalks.



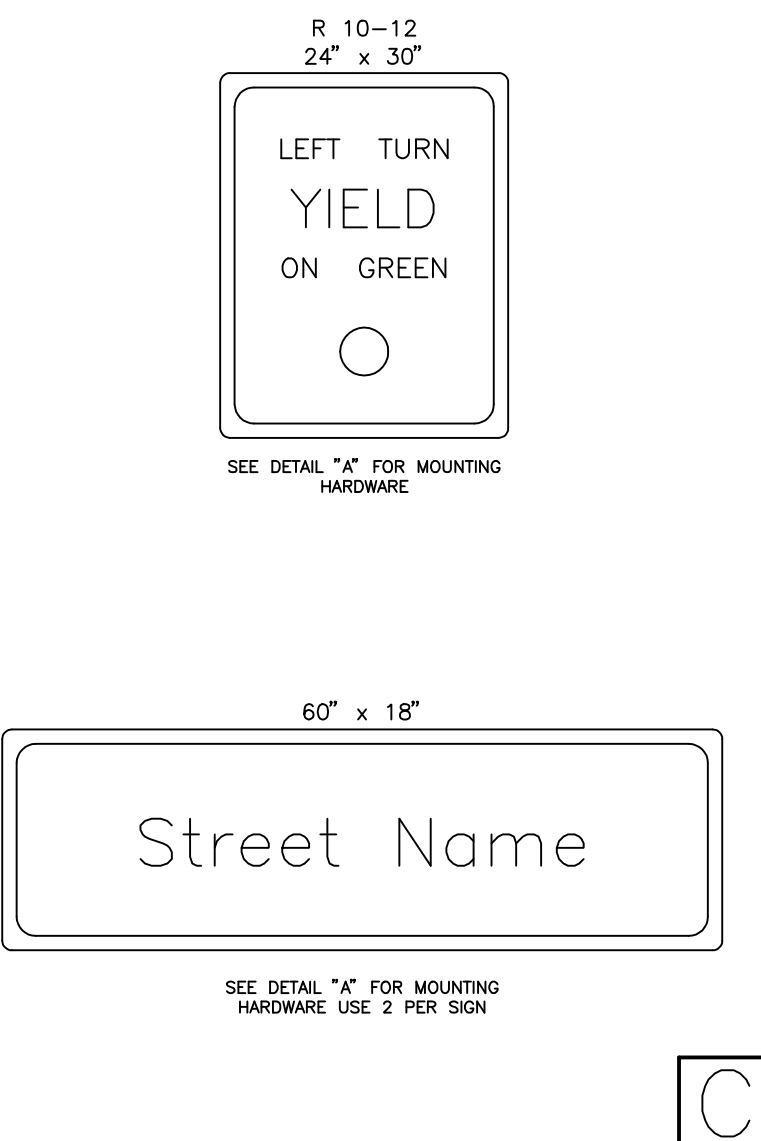
BANDED SIGN MOUNTING BRACKET DETAIL



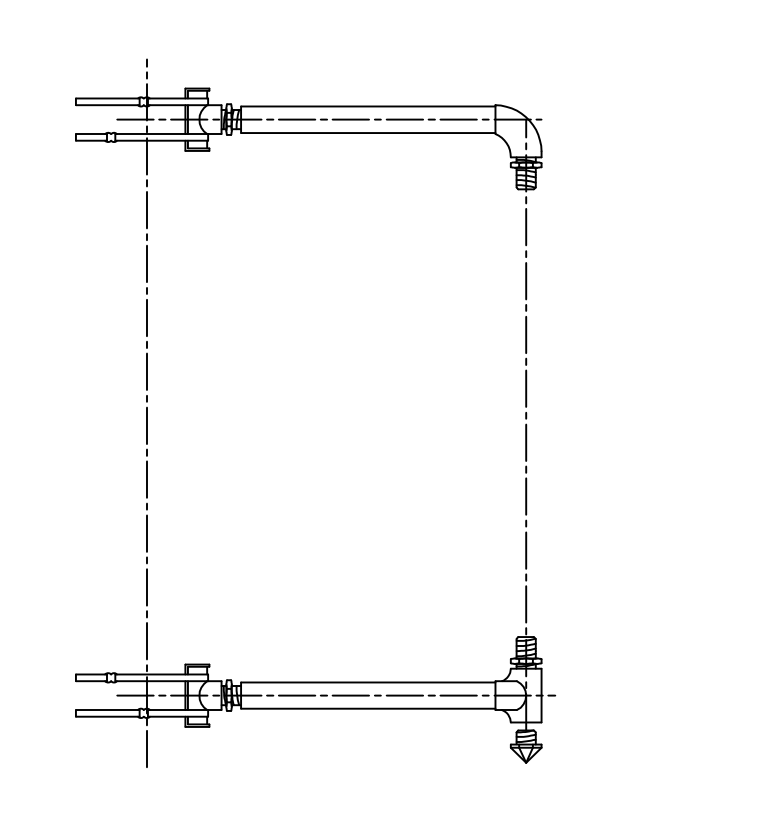
TYPE I SIGNAL MOUNTING BRACKET ASSEMBLY DETAIL



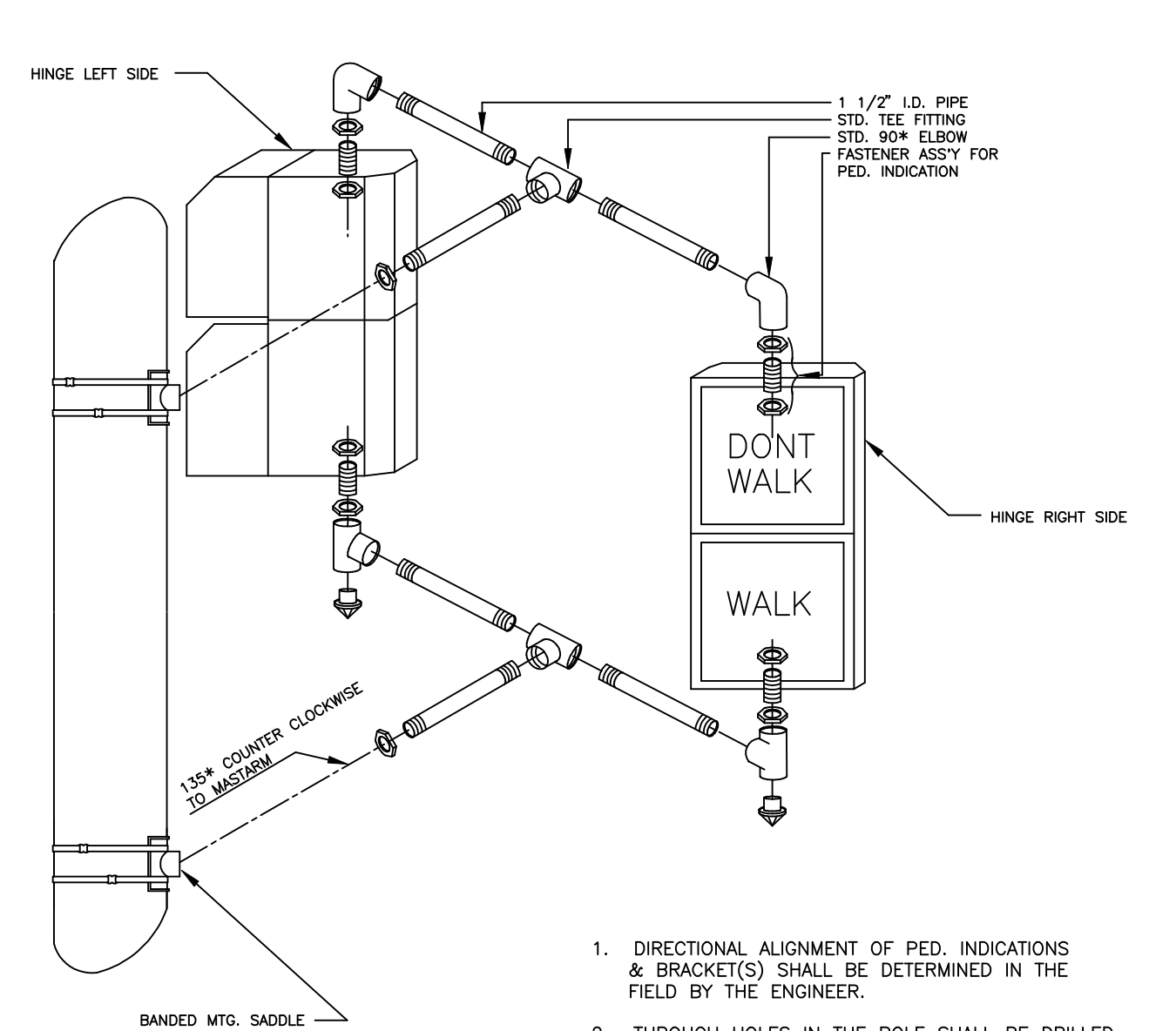
STANDARD SIGNING



TYPE III SIDE-OF-POLE MOUNTING BRACKET ASSEMBLY

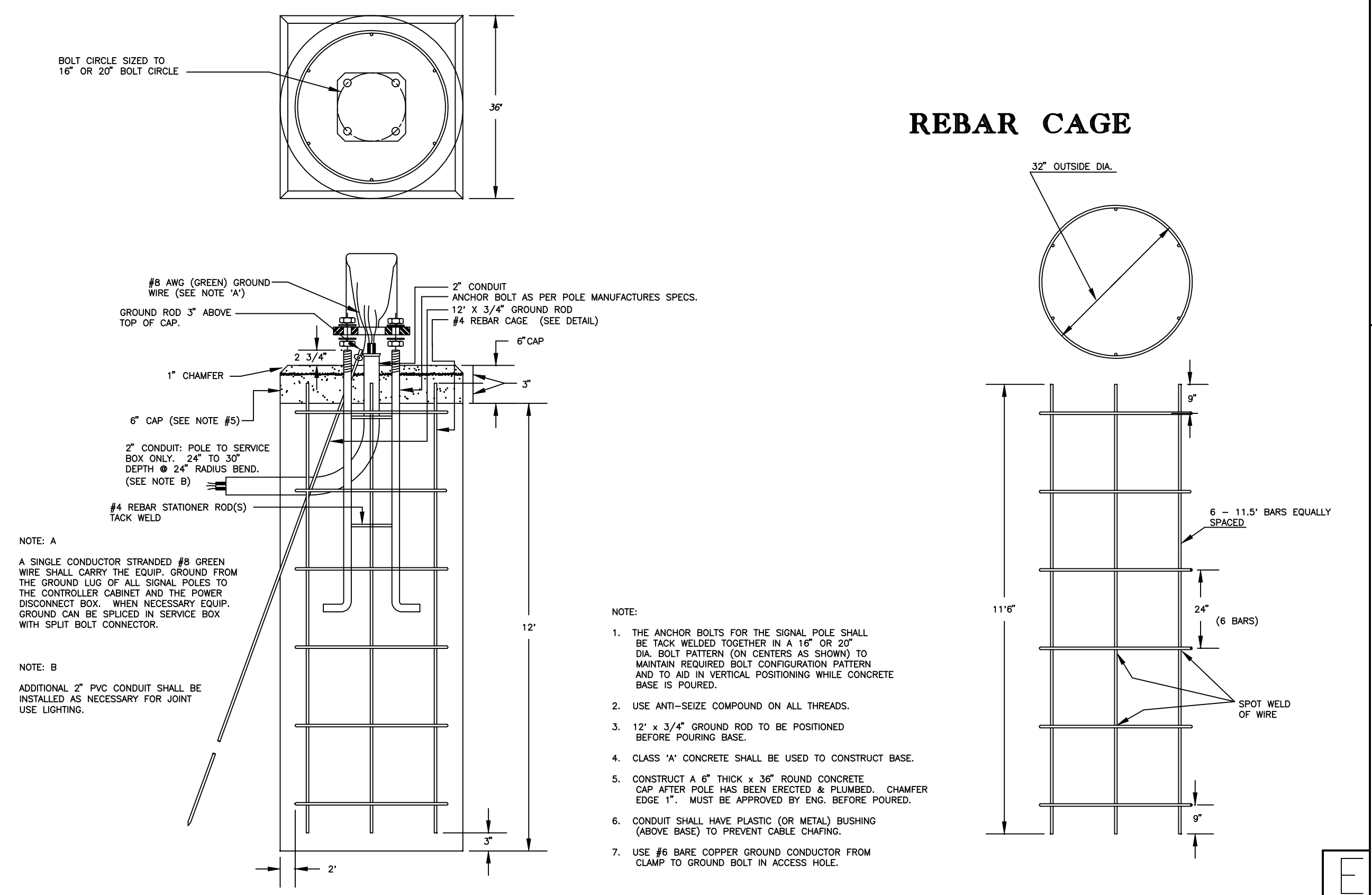


TYPE II SIGNAL MOUNTING BRACKET ASSEMBLY (SIDE-OF-POLE)



1. DIRECTIONAL ALIGNMENT OF PED. INDICATIONS & BRACKET(S) SHALL BE DETERMINED IN THE FIELD BY THE ENGINEER.
2. THROUGH HOLES IN THE POLE SHALL BE DRILLED AND WELL REAMED TO PREVENT CABLE CHAFING.
3. HINGE PEDESTRIAN SIGNAL DOORS AWAY FROM POLE.

REBAR CAGE



21ST STREET & 29TH STREET		
STEEL SIGNAL POLE ASSEMBLY		
DETAILS		
PROJECT NUMBER 472-84720 PHASE I		
DRAWN BY: T.M.	SCALE	REVISED BY: D.R.M.
DATE: MAY 97	NO SCALE	DATE: OCT 08
CITY OF WICHITA DEPARTMENT OF PUBLIC WORKS		
DIVISION OF TRAFFIC ENGINEERING		
PAUL D. GUNZELMAN P.E.	TRAFFIC ENGINEER	SHEET 6 OF 8