



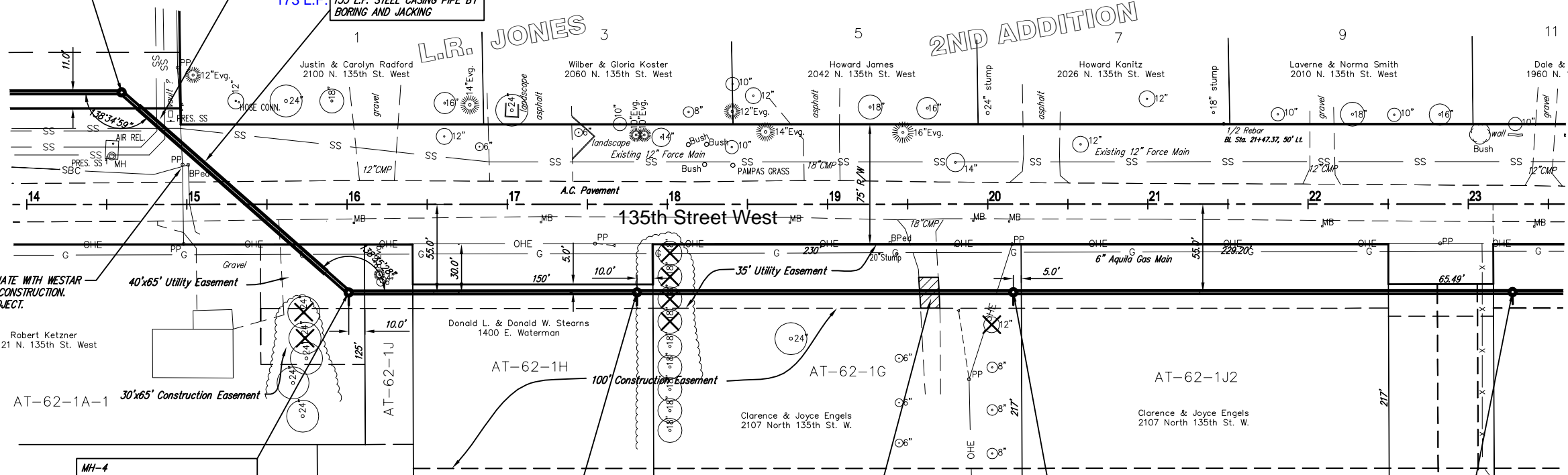
Scale 1" = 40' (Horiz.)
1" = 5' (Vert.)

MH-3
STA. 5+59.75 LINE 1
BL STA. 14+59.26, 70.0' LT.
CONSTRUCT 5' DIA. LINED MH TYPE P
TOP = 1357.3

CAUTION !!! SANITARY SEWER FORCE MAINS
173 L.F.
STA. 5+75 TO 7+30 LINE 1
155 L.F. STEEL CASING PIPE BY BORING AND JACKING

Note: Added 18 lf of 36" casing at 135th St. bore, between MH #3 and MH #4. Added 9 lf to each end.

CONTRACTOR TO COORDINATE WITH WESTAR TO SUPPORT PP DURING CONSTRUCTION. COST SUBSIDIARY TO PROJECT.

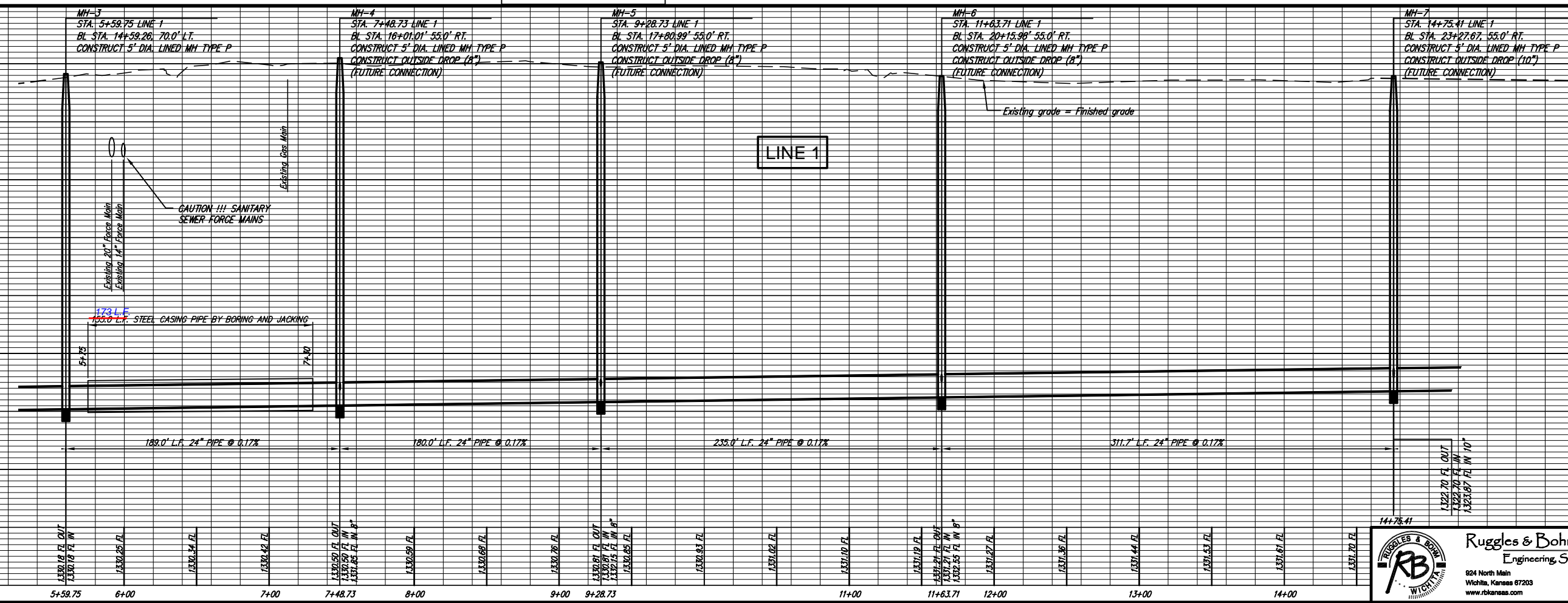


MH-4
STA. 7+48.73 LINE 1
BL STA. 16+01.01' 55.0' RT.
CONSTRUCT 5' DIA. LINED MH TYPE P
CONSTRUCT OUTSIDE DROP (8")(W)
(FUTURE CONNECTION).
TOP = 1360.5

MH-5
STA. 9+28.73 LINE 1
BL STA. 17+80.99' 55.0' RT.
CONSTRUCT 5' DIA. LINED MH TYPE P
CONSTRUCT OUTSIDE DROP (8")(W)
(FUTURE CONNECTION).
TOP = 1360.2

MH-6
STA. 11+63.71 LINE 1
BL STA. 20+15.98' 55.0' RT.
CONSTRUCT 5' DIA. LINED MH TYPE P
CONSTRUCT OUTSIDE DROP (8")(W)
(FUTURE CONNECTION).
TOP = 1359.5

MH-7
STA. 14+75.41 LINE 1
BL STA. 23+27.67' 55.0' RT.
CONSTRUCT 5' DIA. LINED MH TYPE P
CONSTRUCT OUTSIDE DROP (10")(W)
(FUTURE CONNECTION).
TOP = 1359.3



1360	REVIEWED	DATE	REVISION
1355	DESIGN	RA	July 10, 2006
1350	K/W	UTILITY	
1345	PROJECT NUMBER	468-83689	DRAWING FILE
1340	Base	[see 02]	
1335	MAIN 4 - NORTHWEST INTERCEPTOR		
1330	WICHITA, KANSAS		
1325			
1320			

Ruggles & Bohm, P.A.
Engineering, Surveying, Land Planning
824 North Main
Wichita, Kansas 67203
www.rbkansas.com
(316) 264-8008
(316) 264-4821 fax
E-mail: info@rbkansas.com