



Scale 1" = 40' (Horiz.)
1" = 5' (Vert.)

NOTE: CONTRACTOR MAY COORDINATE WITH RWD #4 TO RELOCATE WATER MAIN IN LIEU OF BORING. SUBSIDIARY TO COST OF 24" PIPE.

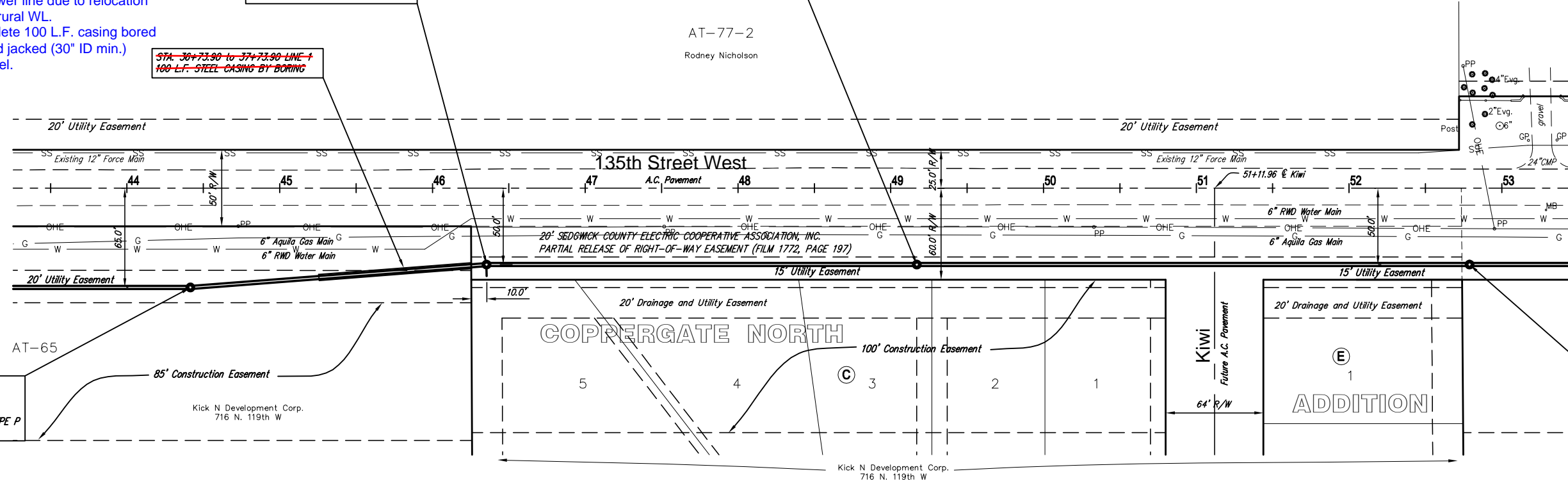
Note: Unnecessary to case sewer line due to relocation of rural WL.
Delete 100 L.F. casing bored and jacked (30" ID min.) steel.

STA. 36+73.90 to 37+73.90 LINE 1
100 L.F. STEEL CASING BY BORING

MH-15
STA. 37+83.90 LINE 1
BL STA. 46+35.38, 50.0' RT.
CONSTRUCT 5" DIA. LINED MH TYPE P
CONSTRUCT OUTSIDE DROP (10") (W)
(FUTURE CONNECTION)
TOP = 1357.7

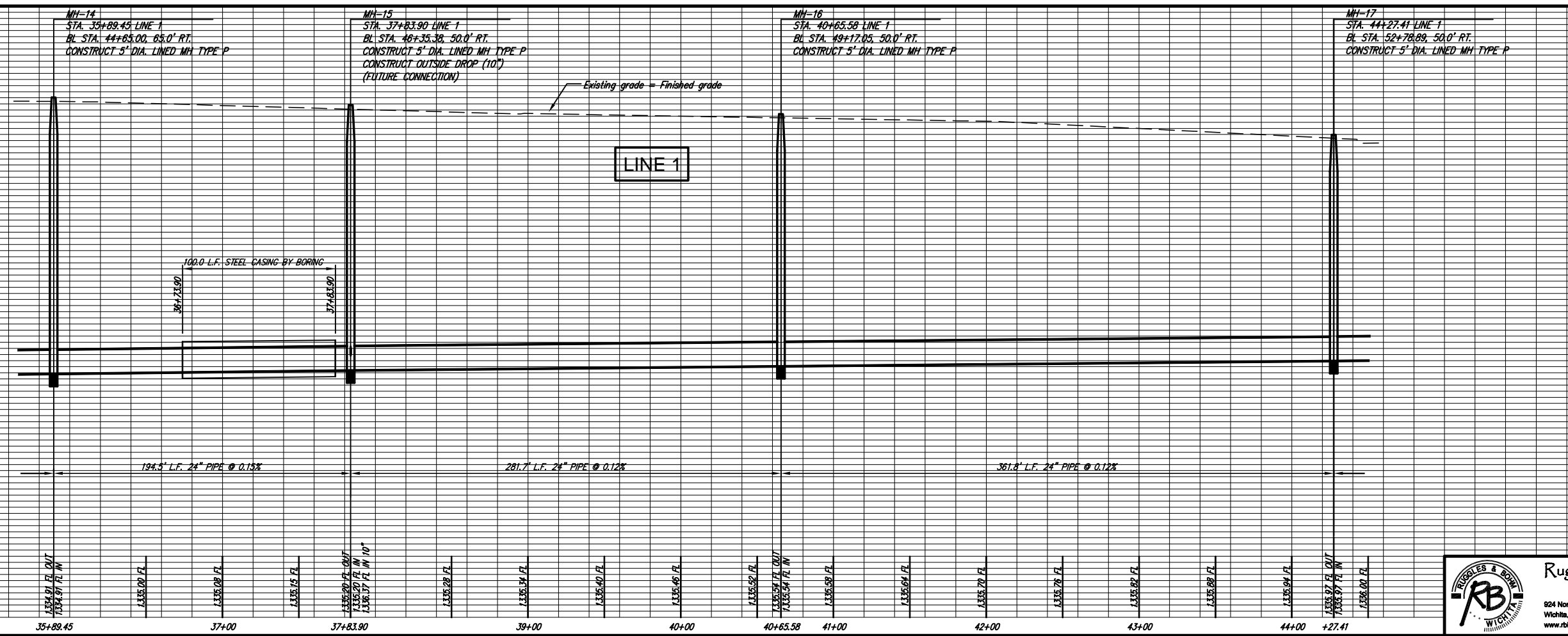
MH-16
STA. 40+65.58 LINE 1
BL STA. 49+17.05, 50.0' RT.
CONSTRUCT 5" DIA. LINED MH TYPE P
TOP = 1356.4

AT-77-2
Rodney Nicholson



MH-14
STA. 35+89.45 LINE 1
BL STA. 44+65.00, 65.0' RT.
CONSTRUCT 5" DIA. LINED MH TYPE P
TOP = 1357.8

MH-17
STA. 44+27.41 LINE 1
BL STA. 52+78.89, 50.0' RT.
CONSTRUCT 5" DIA. LINED MH TYPE P
TOP = 1355.0



1360	REVISION	DATE	BY
1355	DESIGN	July 10, 2006	RA
1350	K/W	UTILITY	FILE
1345	PROJECT NUMBER	468-83889	DRAWING FILE
1340			base [see 05]
1335	MAIN 4 - NORTHWEST INTERCEPTOR		
1330	WICHITA, KANSAS		
1325			
1320			

Ruggles & Bohm, P.A.
Engineering, Surveying, Land Planning
824 North Main
Wichita, Kansas 67203
www.rbkansas.com

(316) 284-8008
(316) 284-4821 fax
E-mail: info@rbkansas.com

RB JOB 2641X
SHEET 7 of 14