

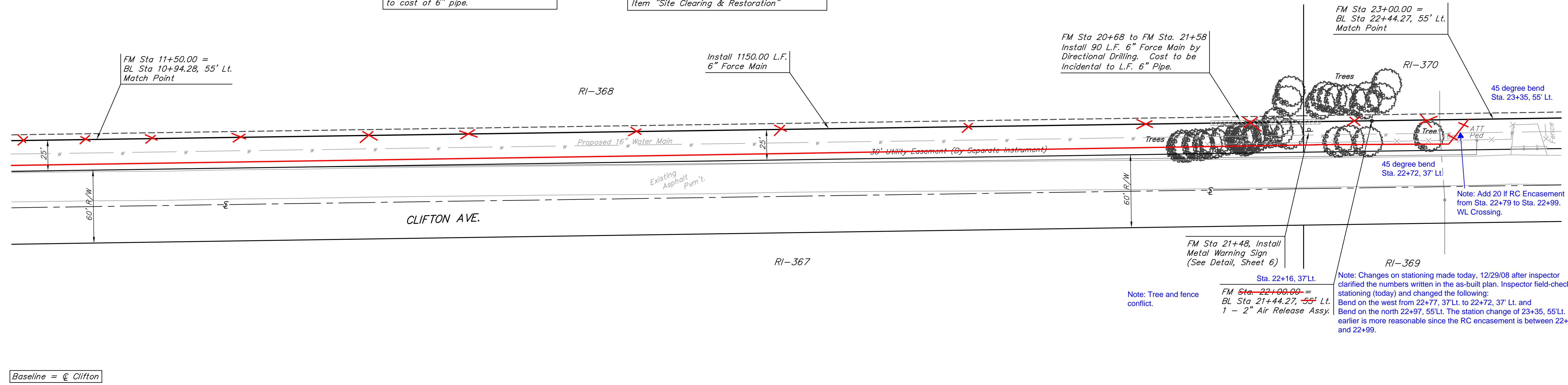
BENCHMARK:
 Arkansas River bridge & 63rd St. S. City of
 Wichita Benchmark Disc. SW Cor. of bridge,
 top of hubguard. 500'± E. of Grove.
 Elev. = 1269.95 NGVD29 (per City record)

Brass plate on the NE wall of Arkansas
 River bridge & 63rd St. S.
 Elev. = 1267.48 NGVD29 (per County record)

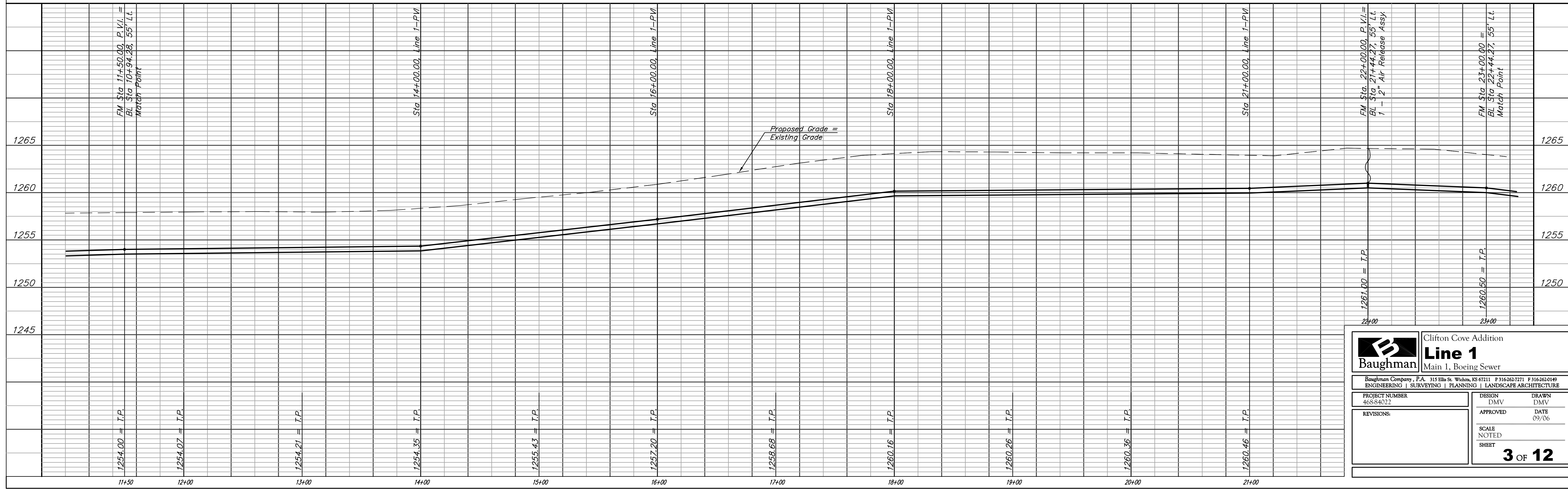
Scale:
 1" = 40' Horizontal
 1" = 5' Vertical
 • = Iron

The Contractor shall install tracer wire
 along the full length of 6" Force Main
 (See Detail, Sheet 7). Cost of tracer
 wire and installation shall be subsidiary
 to cost of 6" pipe.

Existing Trees Shall be removed **ONLY**
 with approval of the Engineer. Trees Not In
 Direct Conflict With Proposed New
 Construction Shall Remain And Be Protected
 From Damage. Cost to be Included in Bid
 Item "Site Clearing & Restoration"



Baseline = \odot Clifton



Baughman Clifton Cove Addition
Line 1
 Main 1, Boeing Sewer

Baughman Company, P.A. 315 Ellis St. Wichita, KS 67211 P 316-262-7271 F 316-262-0149
 ENGINEERING | SURVEYING | PLANNING | LANDSCAPE ARCHITECTURE

PROJECT NUMBER 46S-84022	DESIGN DMV	DRAWN DMV
APPROVED	DATE 09/06	
REVISIONS:	SCALE NOTED	SHEET 3 OF 12