

**BENCHMARK:**  
 Arkansas River bridge & 63rd St. S. City of  
 Wichita Benchmark Disc. SW Cor. of bridge,  
 top of hubguard. 500'± E. of Grove.  
 Elev. = 1269.95 NGVD29 (per City record)

Brass plate on the NE wingwall of Arkansas  
 River bridge & 63rd St. S.  
 Elev. = 1267.48 NGVD29 (per County record)

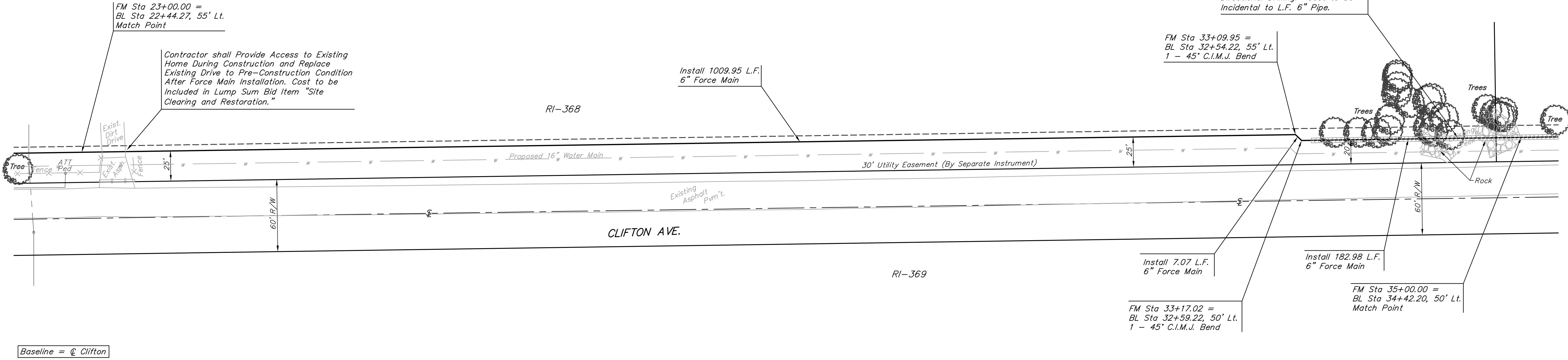


Scale:  
 1" = 40' Horizontal  
 1" = 5' Vertical  
 • = Iron

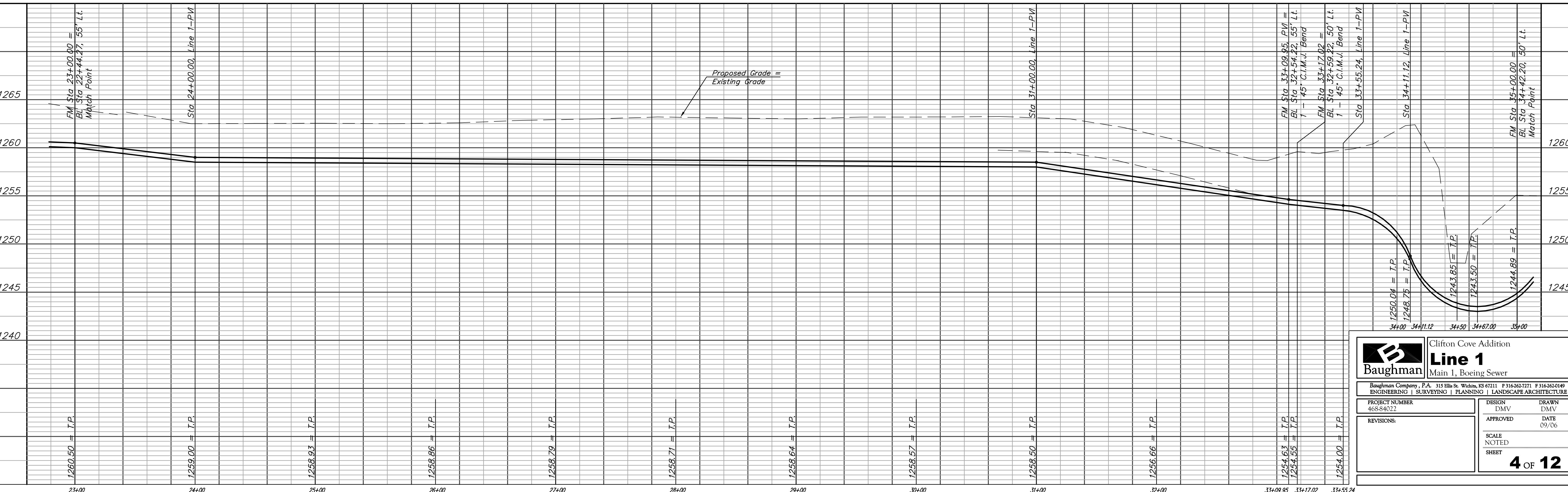
The Contractor shall install tracer wire  
 along the full length of 6" Force Main  
 (See Detail, Sheet 7). Cost of tracer  
 wire and installation shall be subsidiary  
 to cost of 6" pipe.

Existing Trees Shall be removed **ONLY** with  
 approval of the Engineer. Trees Not In  
 Direct Conflict With Proposed New  
 Construction Shall Remain And Be Protected  
 From Damage. Cost to be Included in Bid  
 Item "Site Clearing & Restoration"

FM Sta 33+25 to FM Sta. 35+40  
 Install 215 L.F. 6" Force Main by  
 Directional Drilling. Cost to be  
 Incidental to L.F. 6" Pipe.



Baseline =  $\odot$  Clifton



<b>Clifton Cove Addition</b> <b>Line 1</b> Main 1, Boeing Sewer		Baughman Company, P.A. 315 Ellis St. Wichita, KS 67211 P 316-262-7271 F 316-262-0149 ENGINEERING   SURVEYING   PLANNING   LANDSCAPE ARCHITECTURE
		PROJECT NUMBER 468-84032
REVISIONS:	DESIGN DMV	DRAWN DMV
APPROVED	DATE 09/06	SCALE NOTED
SHEET	<b>4 OF 12</b>	